



**GET READY FOR
TOMORROW, TODAY.
REDEFINE YOUR
SECURITY
INTELLIGENCE**

BALANCING ACCESSIBILITY AND RISK

The challenge before enterprises is to provide accessibility and protect their online properties from malignant attacks at the same time. This is significant because the risks associated with digital identities and business digital objects (URL, IP, Applications, etc.) have grown exponentially. Every day enterprises are encountering it in various forms —a user leaving comments or objects on a web-property, or executing financial transactions on an e-commerce platform.

So how can enterprises enable maximum accessibility and minimize the risks?

One way is by tracking online digital identities, business digital objects / properties, and their associated relationships. It can help enterprises provide their customers with improved accessibility by gathering additional intelligence (individual entities and potential threats).

Another way would be to gain advance intelligence on the public domain on the risk associated with digital identities and objects. It can significantly boost the effectiveness of technical and business controls deployed by enterprises for online security.

Therefore, what enterprises require is a solution or a framework that helps them achieve a fine balance between accessibility and risks.



TURNING INSIGHT INTO SECURITY

HCL's highbrow is a security intelligence framework. It uses the power of data analytic technologies, tools, and techniques to build a dynamic and configurable risk analysis platform that an enterprise can leverage to defend against potential threats. Similarly, it utilizes data analytics and hybrid Cloud technologies to create a risk scoring profile of digital identities and assets, which organizations can use to seal the gaps in their security infrastructure.

Furthermore, business analysts can leverage the highbrow console to define new rules for the risk-scoring engine. In the same way, data scientists can implement backend machine learning algorithms and customized automated scoring logic for gleaning deeper intelligence and insight into potential risks. Enterprises can employ the platform's service-oriented components, utilities, and reference implementations for developing comprehensive security intelligence focused solutions.

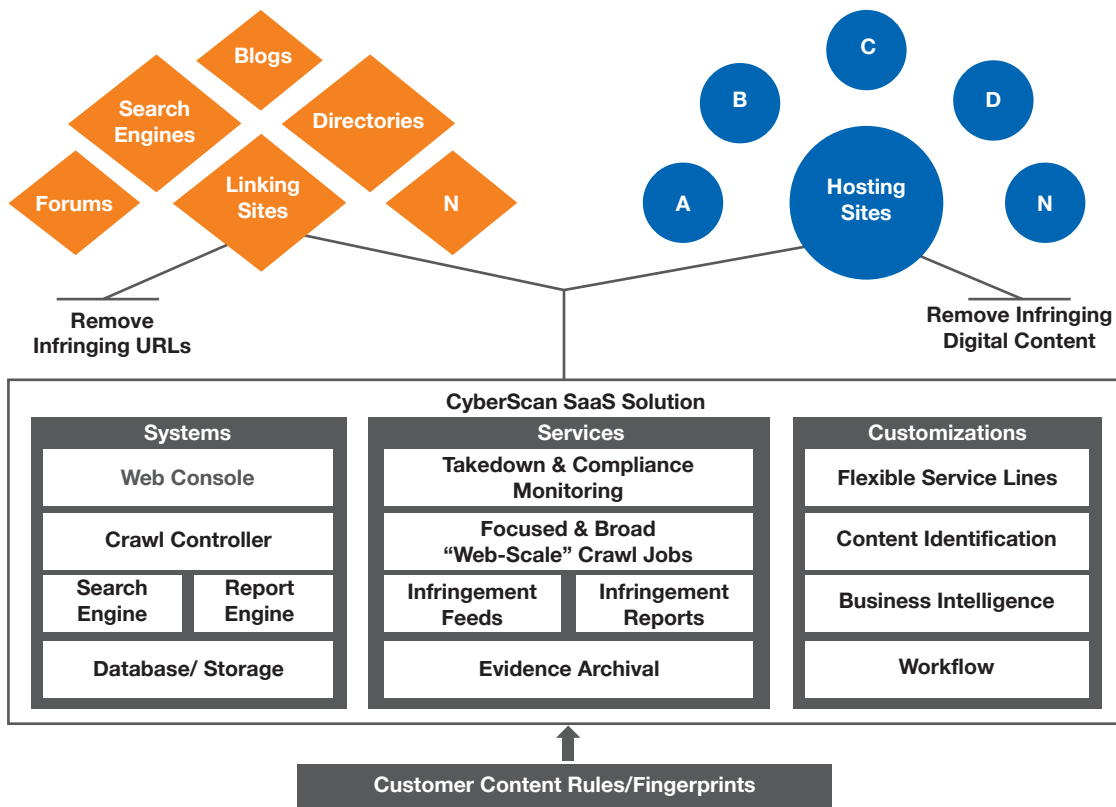
DELIVERING INSIGHT FOR SECURED SERVICE OFFERINGS

eCom: B2C	Online Platform	Telecom Operator	BFSI, Health-Care, Government, Others
<p>Use-Case: User is executing a financial transaction and the commerce platform needs to detect and protect against fraud.</p> <p>Primary Impact: Direct revenue loss</p> <p>Control: System executes user transaction analysis and tries to identify fraudulent activities via transaction behavior analysis and technographic details.</p>	<p>Use-Case: User is leaving comments, objects (URL, App etc.) on the web-property. The system has to identify the abuse and security risk, subject to user-generated content.</p> <p>Primary Impact: Indirect advertising revenue loss</p> <p>Control: System executes text analysis and digital object database reference to identify the objectionable content and correct it.</p>	<p>Use-Case: Unidentified network congestion or service outage. Security threat to B2B services.</p> <p>Primary Impact: Revenue loss due to service outage and disconnection of legitimate users</p> <p>Control: Quarantine the user and the network segment. May be for a prolonged period of time.</p>	<p>Use-Case: Human interactions recorded in the voice and text form has hidden data set required for compliance monitoring / business opportunity identification.</p> <p>Primary Impact: Regulatory non-compliance, security breach, business information loss</p> <p>Control: Manual and random scan of voice data and key-word based detection of text data sources.</p>
Lets add user's digital risk profile based on their cyber transactions.			
<p>System refers to the risk score provided by highbrow and applies control before granting access to the user. E.g., a high risk user will not execute more than a \$10 transaction, followed by other fraud detection controls.</p>	<p>Based on the highbrow risk score, the online platform does not allow malicious users to leave any URL or App on the digital platform. Such user comments are always analyzed using stringent controls.</p>	<p>A correlated view of the risk score provided by highbrow for users and digital objects such as URL, IP and Apps, allows the system to quarantine only malicious entities and results in reducing service outage and user impact.</p>	<p>highbrow voice recording analysis and identity risk score capability delivers near real-time detection of non-compliance and security risks.</p>

ADDING INTELLIGENCE TO ANTI-PIRACY

HCL's highbrow is a next generation Cloud-based anti-piracy service that tracks content and its availability over time, identifies dominant content piracy patterns via sophisticated recheck algorithms and workflows, and archives evidence to support anti-piracy initiatives. Built on a service-oriented architecture with a powerful web crawling engine, highbrow's web portal delivers intuitive features such as BI-grade data visualizations, flexible reporting engine, and job/workflow management UI's, which provide a comprehensive automated content protection solution.

HCL's highbrow solution enables content protection through three well-defined stages — **Identification, Evidence Collection, and Reporting Infringement.**



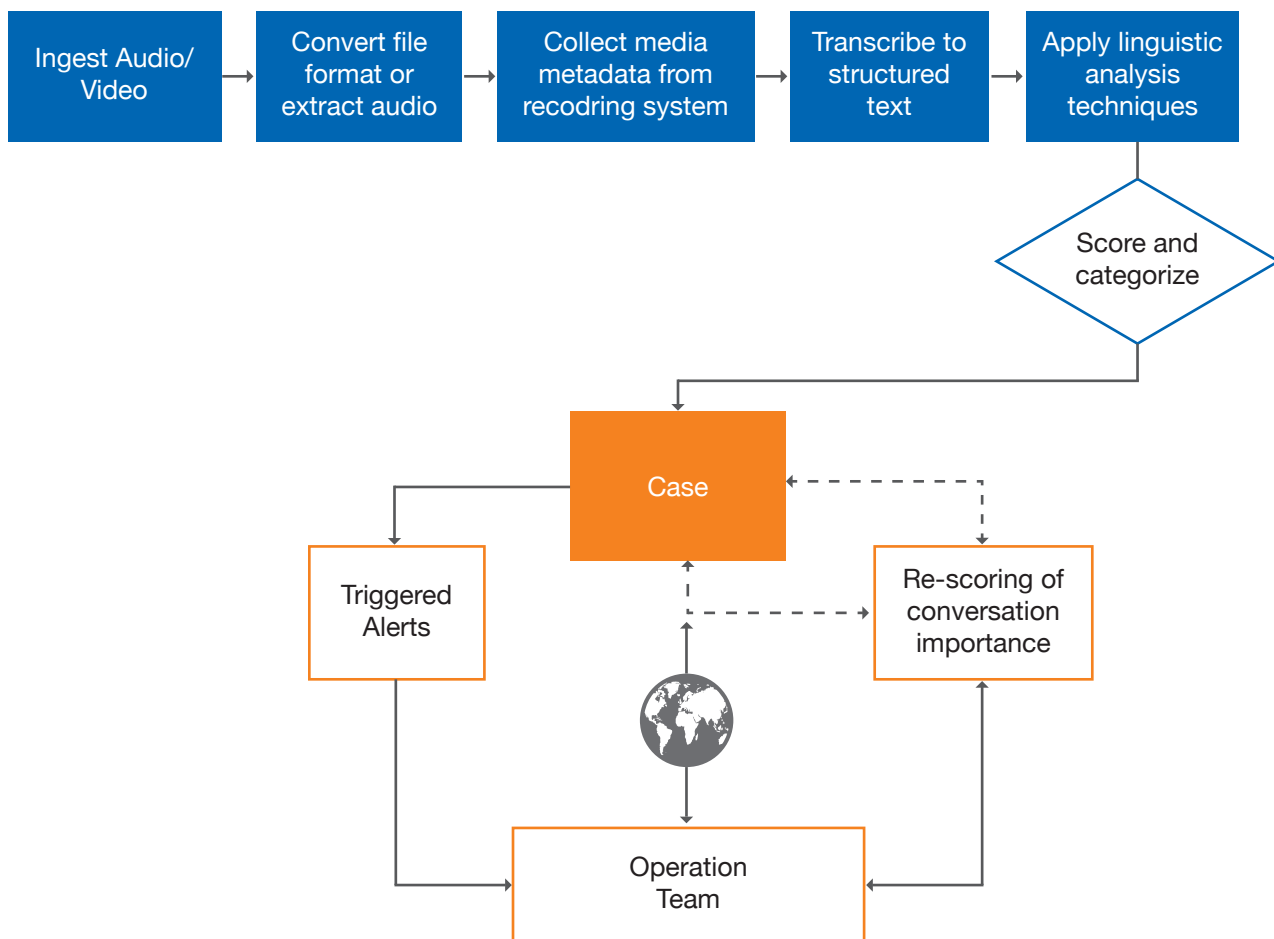
Enterprises can use HCL’s highbrow to identify and manage infringement of digitally shareable content (e.g. movies, pictures, audio files, eBooks, documents, TV shows, software, etc.) with the help of the following functionalities:

- Automated domain traversal, parsing, and indexing
- Automated identification of suspected infringement of intellectual property
- Take down notifications and hosting site API integration
- Multi-lingual support (initially English/German/French/Spanish/Russian)
- Evidence capture and archival
- Reports newly discovered infringement as a separate feed
- Interactive web UI for system monitoring and control
- Powerful faceted search for drilling into the indexed content
- Prevalence analysis for pirated content and its service providers
- Pragmatic approach to identification and analysis via Machine Learning algorithms

HCL’s highbrow framework and the highbrow CyberScan platform is an innovative and scalable security intelligence solution. Its state-of-the-art software uses web crawling, tracking and indexing, distributed agent “sniffers”, and IP masking to identify, monitor, and report security threats in a rapid but undetectable manner.

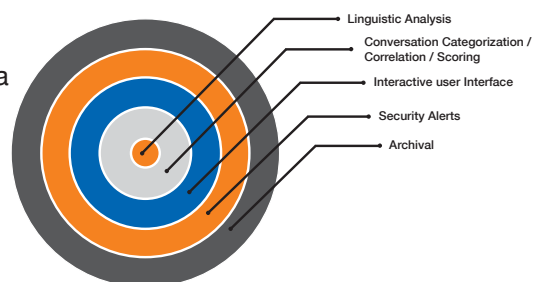
LENDING A VOICE TO INTELLIGENCE GATHERING

The relevance of verbal communication varies tremendously. Filtering through audio conversations to find discussions of interest is a tedious and time consuming task. Companies may need to do this for various reasons, such as intelligence gathering, compliance or quality assurance purposes. highbrow Voice Recording Analysis (VRA) service simplifies this process through a combination of advanced analysis technologies, automated workflows and manual research provided as an end-to-end service.



highbrow CyberScan VRA helps enterprises transcribe audio conversations into text and categorize discussions into taxonomies. In addition, it has the following features:

- Extract topics / contexts / syntaxes
- Correlate discussions with internal and external sources of metadata
- Analyze & trend activity via prevalence data / rule based thresholds
- Report identified threats via web based monitoring console
- Push notifications to send configurable alerts
- Store audio and text intelligently to maintain historical archives
- Workflow management
- System auditing

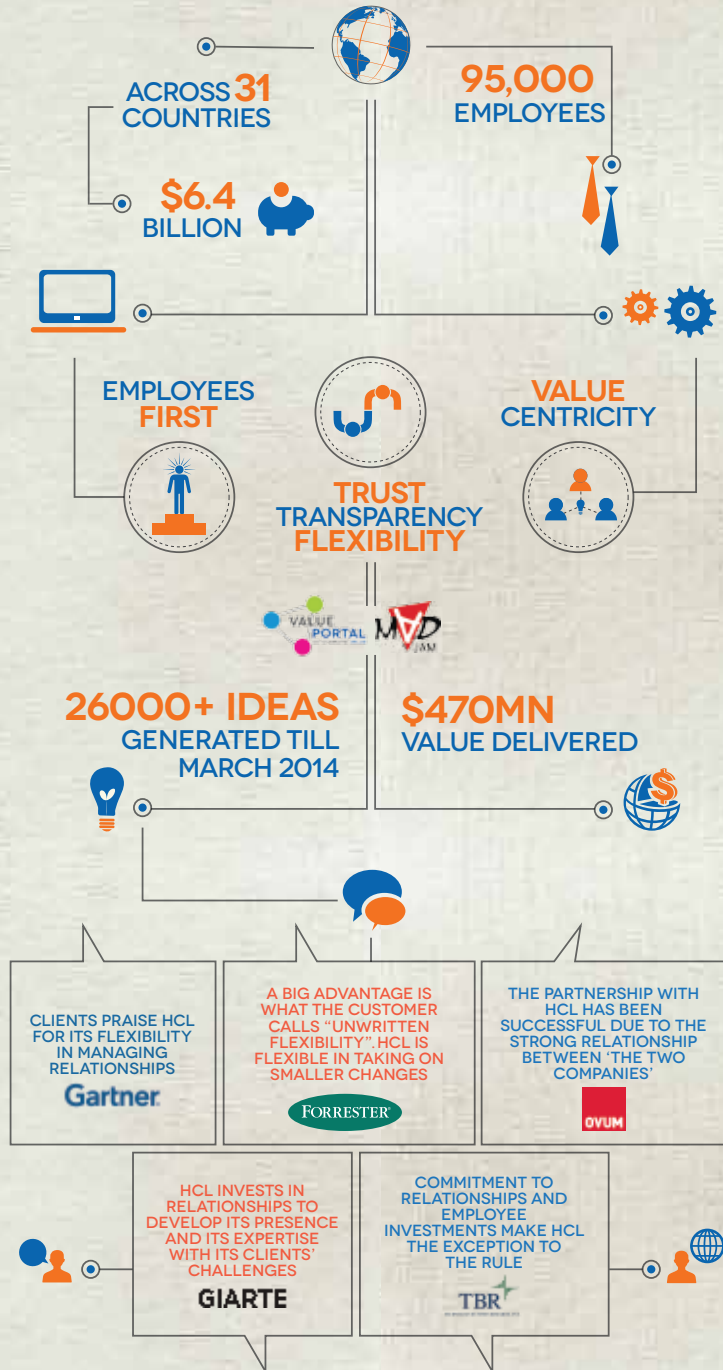


By leveraging speech to text technology, coupled with powerful Business Intelligence capabilities, highbrow CyberScan VRA delivers an automated approach to analyzing massive volumes of speech/conversion in near real-time.

To understand why HCL's Security Intelligence Services is the most advanced, cost-effective and scalable anti-piracy solution in the market, write to ranjeet.khanna@hcl.com

Relationship TM

BEYOND THE CONTRACT



Hello there! I am an Ideapreneur. I believe that sustainable business outcomes are driven by relationships nurtured through values like trust, transparency and flexibility. I respect the contract, but believe in going beyond through collaboration, applied innovation and new generation partnership models that put your interest above everything else. Right now 95,000 Ideapreneurs are in a Relationship Beyond the Contract™ with 500 customers in 31 countries. How can I help you?

Relationship TM
 BEYOND THE CONTRACT

