

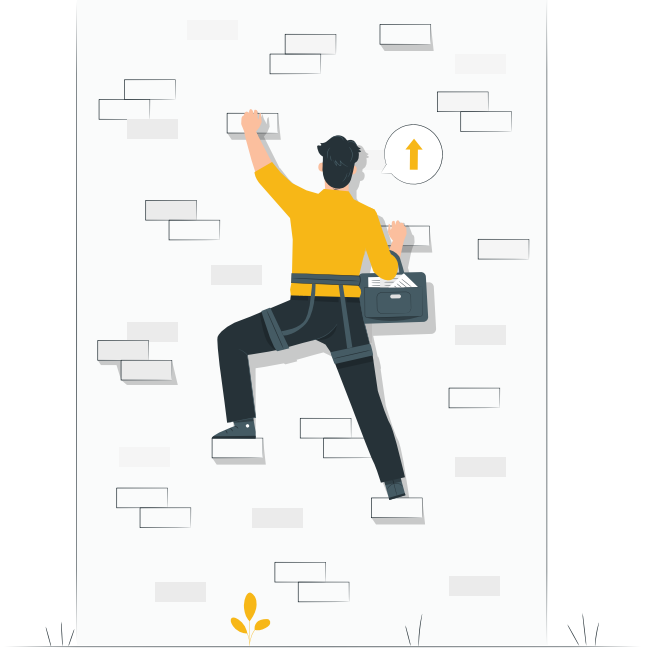
Consolidation of Warehouse Management Systems (WMS)

Helped a leading German based global logistics company to consolidate different WMS



Business challenges

Client has a global complex WMS platform based on different WMS solutions. Defined road map of selecting BY WMS as the global standard. End of life solutions were converted to BY WMS through a global template.



Transformation journey

- Template creation to enable standardization on a global scale
- End-to-end migration
- Implementation of the e-com requirements (D2C) raised during pandemic situation
- End-to-end testing services after migration
- Hypercare support after go-live & hand-over to HCL BAU support



Business impact



01

Standardized BY WMS as the WMS platform



02

60% reduction in deployment times



03

Integration with 3rd party material handling systems



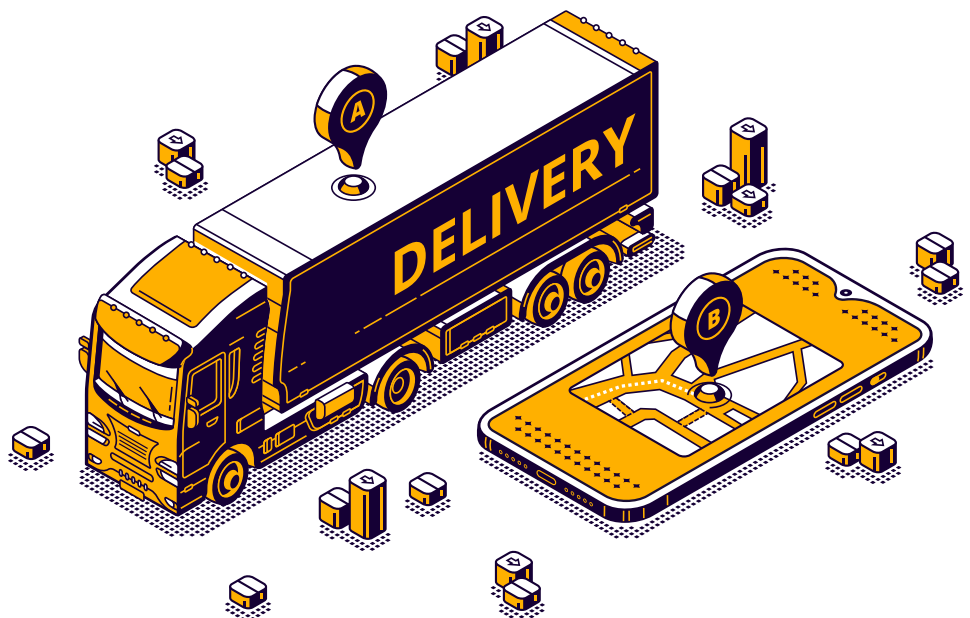
04

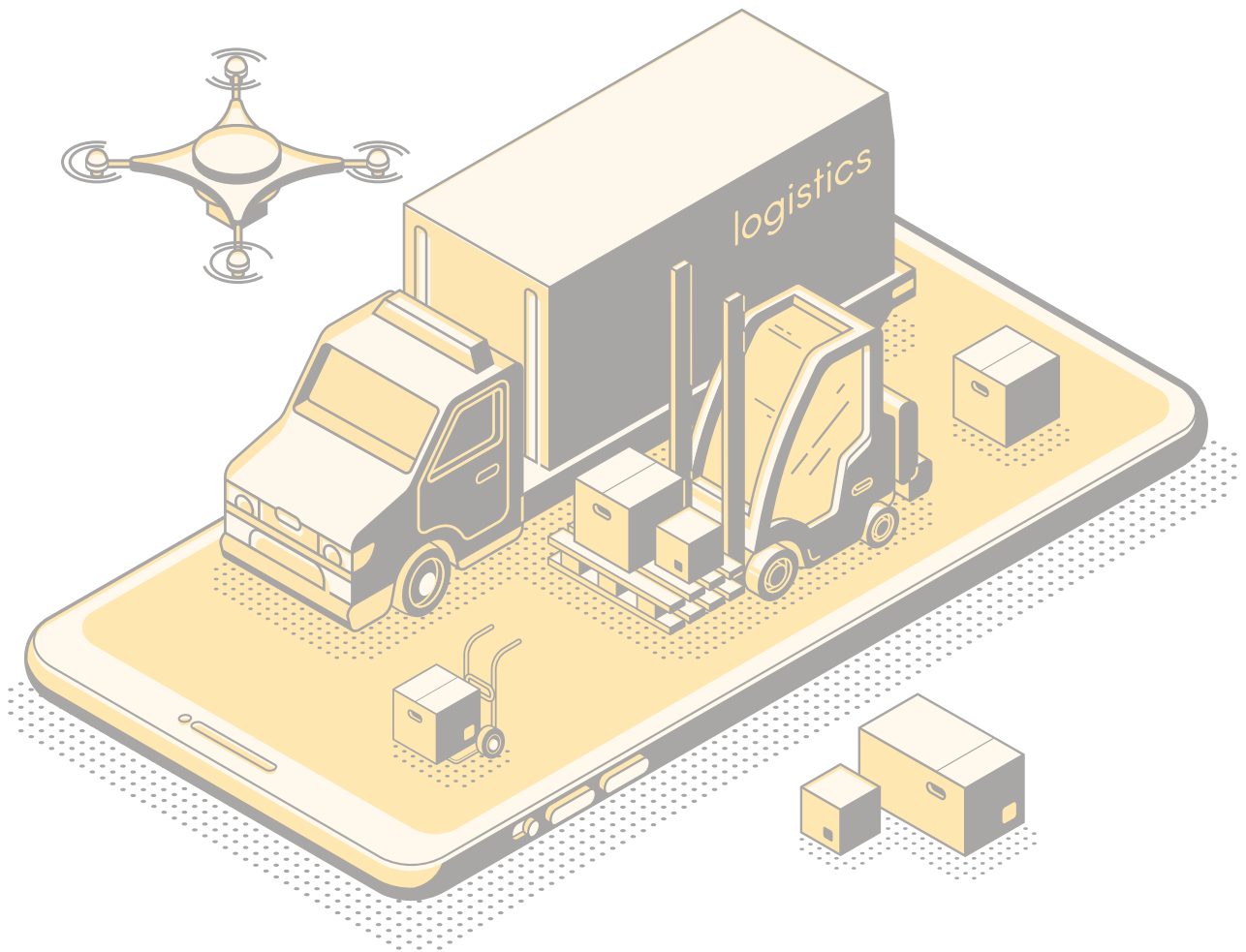
Leveraged test factory for deployments and enhancements



05

CIP programs to reduce tickets & increase KPI visibility

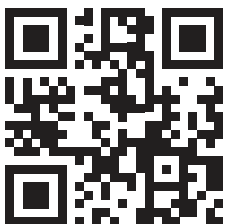




HCL Technologies (HCL) empowers global enterprises with technology for the next decade today. HCL's Mode 1-2-3 strategy, through its deep-domain industry expertise, customer-centricity and entrepreneurial culture of ideapreneurship™ enables businesses to transform into next-gen enterprises.

HCL offers its services and products through three lines of business - IT and Business Services (ITBS), Engineering and R&D Services (ERS), and Products & Platforms (P&P). ITBS enables global enterprises to transform their businesses through offerings in areas of Applications, Infrastructure, Digital Process Operations, and next generation digital transformation solutions. ERS offers engineering services and solutions in all aspects of product development and platform engineering while under P&P. HCL provides modernized software products to global clients for their technology and industry specific requirements. Through its cutting-edge co-innovation labs, global delivery capabilities, and broad global network, HCL delivers holistic services in various industry verticals, categorized under Financial Services, Manufacturing, Technology & Services, Telecom & Media, Retail & CPG, Life Sciences, and Healthcare and Public Services.

As a leading global technology company, HCL takes pride in its diversity, social responsibility, sustainability, and education initiatives. As of 12 months ending on March 31, 2022, HCL has a consolidated revenue of US \$11.48 billion and its 209,000 ideapreneurs operate out of 52 countries. For more information, visit www.hcltech.com



www.hcltech.com