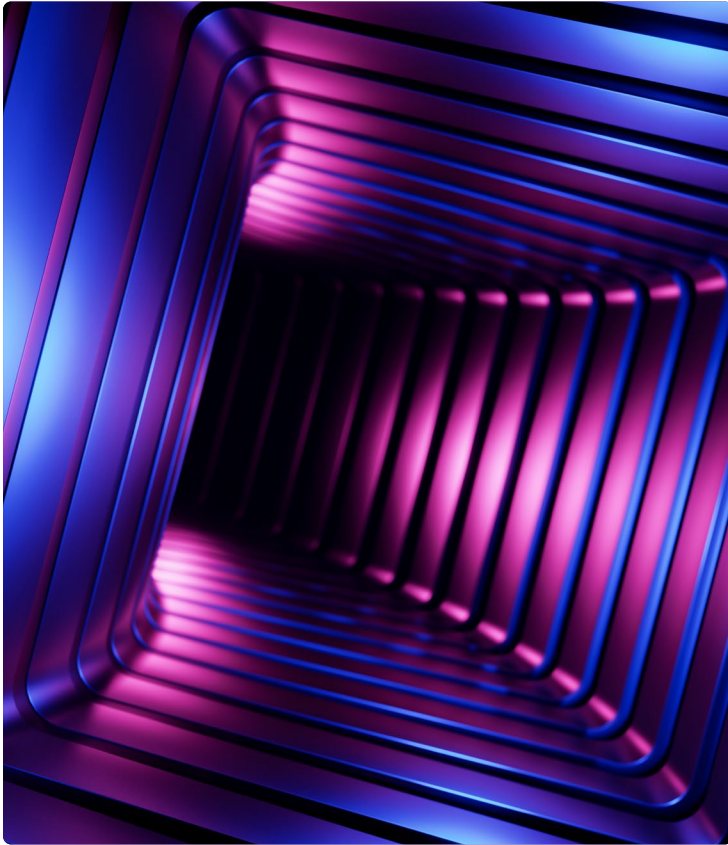


**HCLTech** | Supercharging  
Progress™

# xLMCloud solution

Product engineering R&D  
transformation solution



HCLTech's xLMCloud helps enterprises transform their Engineering R&D, IT Infrastructure into an agile, scalable, secure and high-performance environment on Cloud.

HCLTech has combined its deep engineering systems experience and strong partnerships with industry software, graphics technology, and cloud infrastructure providers to create this solution. xLMCloud industry solution's service catalog provides the right mix of services to help enterprises plan the best cloud strategy for their business and enable cloud transformation. This solution not only helps meet an enterprise's current needs but also provides on-demand agility and scalability to meet varying business needs. Further, by simplifying the engineering applications landscape, the solution helps lower the total cost of ownership of IT infrastructure management and support of CAx and PLM applications.

## HCLTech xLMCloud – CAx-PLM Cloud Transformation Offering



### Cloud Consulting

- Cloud readiness assessment & gap analysis
- Transformation roadmap & blueprint
- CAD, PLM cloud architecture and workloads definition
- Governance processes & structure



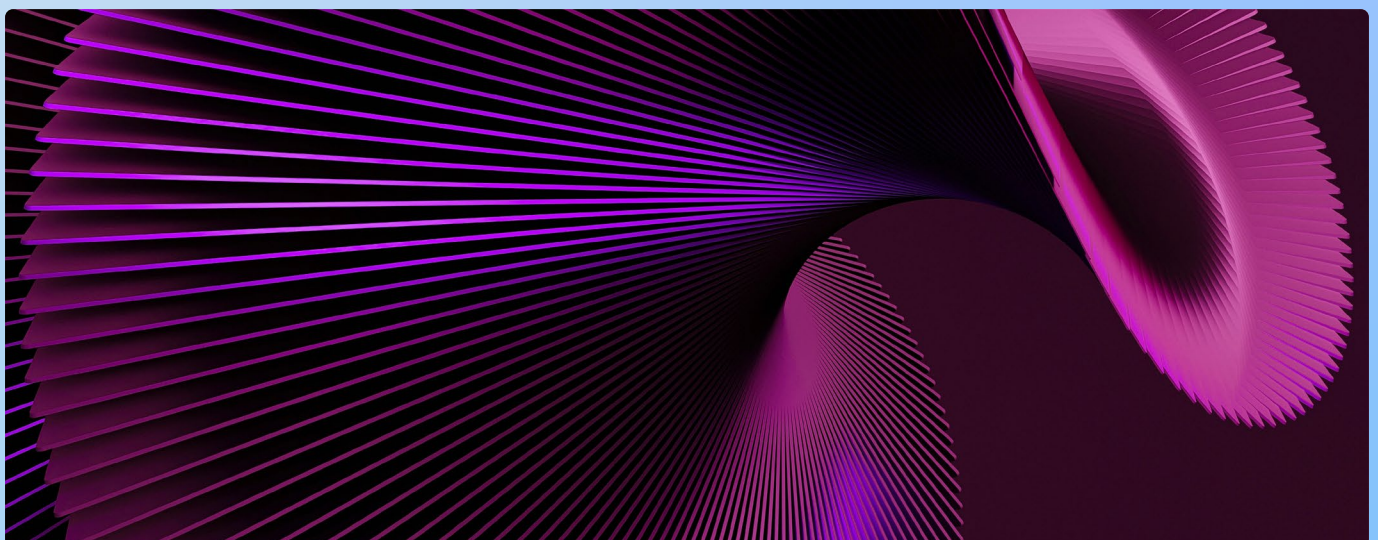
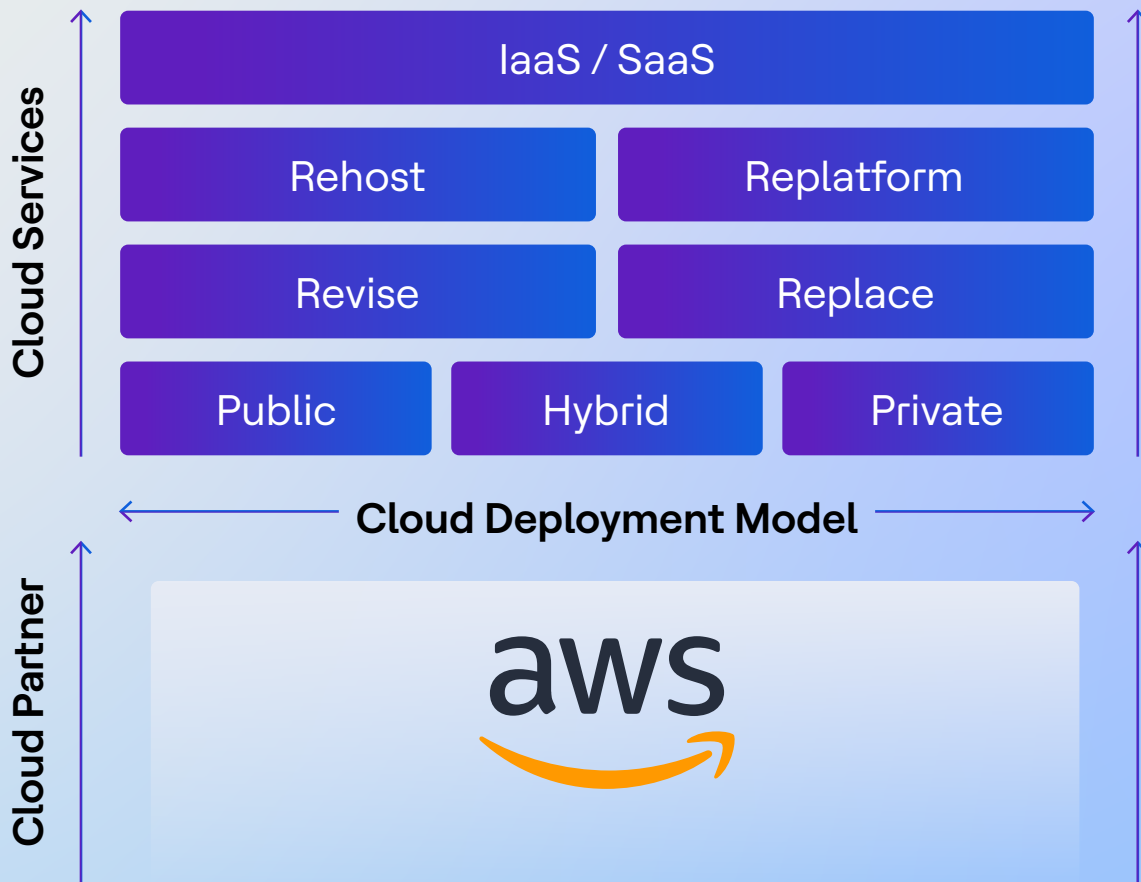
### Cloud Transformation

- Transformation to identified cloud platform
- Application integrations
- DevOps tooling and implementation
- Cloud transformation program governance



### Cloud Operations

- Application and cloud administration with pre-defined SLAs
- Operational intelligence
- ITSM tooling integration
- Continuous improvement
- Change and release management









# Benefits

Customers can realize significant benefits by leveraging HCLTech xLMCloud solution as outlined below:

 <p><b>Remote work enablement</b></p> <p>Flexibility of remote collaboration with seamless user experience</p>	 <p><b>Reduced total cost of ownership</b></p> <p>Lower cost of IT infrastructure, management, and application support</p>	 <p><b>Security</b></p> <p>CAD, CAM, CAE, &amp; PLM data in the cloud meeting security and compliance needs</p>
 <p><b>Performance</b></p> <p>Fluid and seamless user experience of graphics - intensive applications</p>	 <p><b>Flexibility</b></p> <p>Modular services approach enabling customers to plan the best cloud strategy</p>	 <p><b>Reliability</b></p> <p>Proven integrated approach for accelerated and smooth cloud transformation</p>

# Our Success Stories

Customers can realize significant benefits by leveraging HCLTech xLMCloud solution as outlined below:

 <p>PTC Creo, Windchill, DS 3DEXperience, DS Abacus HPC transformation for a global automotive supplier</p>	 <p>PLM and PPM transformation for a global telecom major</p>	 <p>Greenfield deployment of Siemens Teamcenter, Polarion and DevOps for an American eVTOL OEM</p>
 <p>AWS based PLM data exchange solution for global partner automotive OEMs</p>	 <p>Siemens NX, Teamcenter and TC RAC migration for a Japanese Automotive OEM</p>	 <p>Greenfield implementation of PTC Windchill for a European CPG major</p>

# HCLTech | Supercharging Progress™

HCLTech is a global technology company, home to more than 221,000 people across 60 countries, delivering industry-leading capabilities centered around digital, engineering, cloud and AI, powered by a broad portfolio of technology services and products. We work with clients across all major verticals, providing industry solutions for Financial Services, Manufacturing, Life Sciences and Healthcare, Technology and Services, Telecom and Media, Retail and CPG, and Public Services. Consolidated revenues as of 12 months ending September 2023 totaled \$12.9 billion. To learn how we can supercharge progress for you, visit [hcltech.com](https://hcltech.com).

[hcltech.com](https://hcltech.com)

