

ADAS Annotation

Accelerating Ground Truth
Annotation productivity

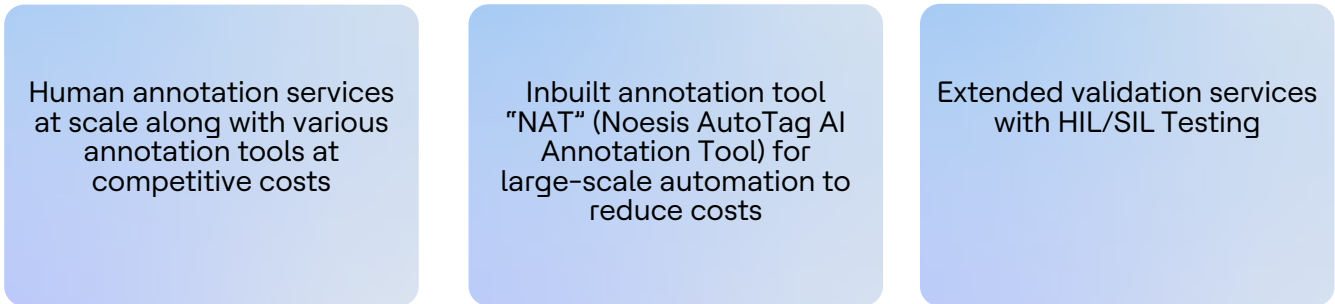


Overview

Ground Truth Validation is a crucial step to improving machine learning capabilities and efficacy of ADAS Ground Truth Data for the autonomous car segment.

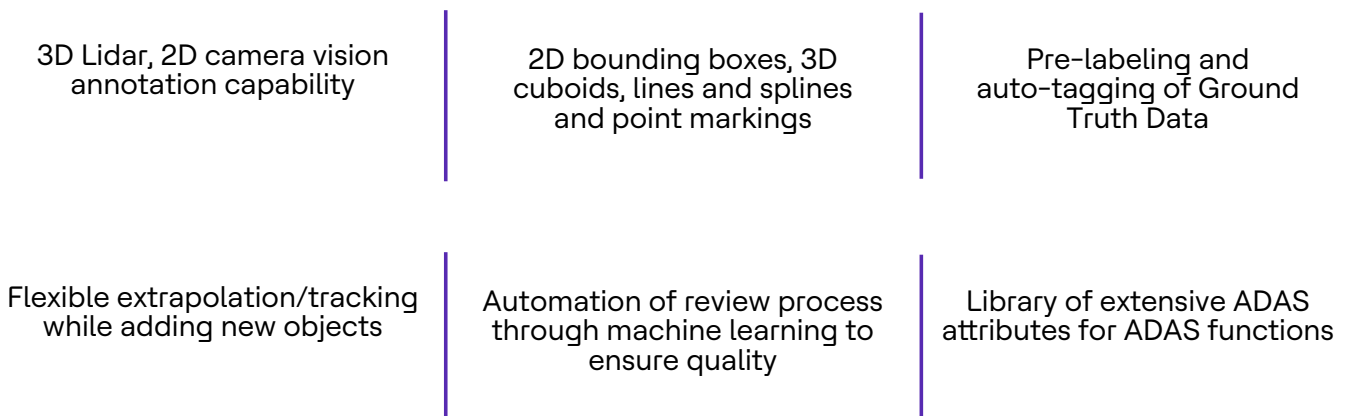
Since it involves collecting, annotating and validating large-scale driving datasets, it requires data cloud partners, annotation tools and an annotation workforce. There is a high demand for automation for the annotation of ground truth data to cut down annotation costs

HCLTech aims to provide annotation services as part of DRIVE with:



Key Features

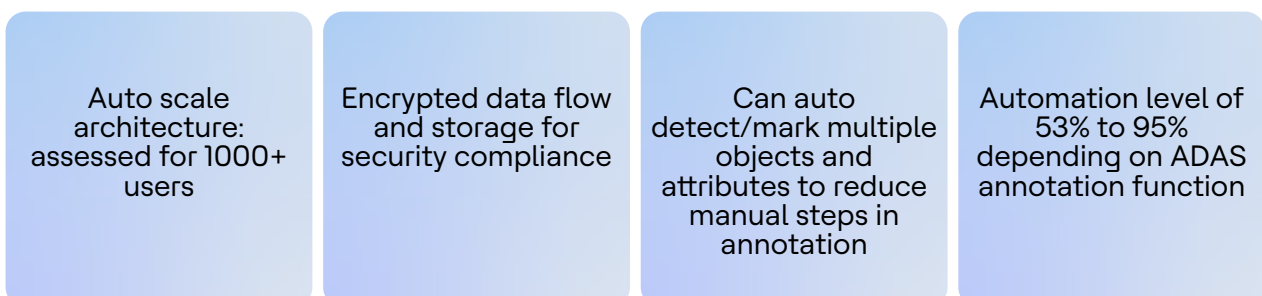
The NAT tool by HCLTech is built by leveraging all the ADAS experiences derived from multiple annotation projects to improve the productivity and quality of annotation data through automation. Key features include:



Can be deployed on-premises or on any cloud

Benefits

The NAT tool's AI capability and cloud connectivity can help with:



HCLTech | Supercharging Progress™

HCLTech is a global technology company, home to 211,000+ people across 52 countries, delivering industry-leading capabilities centered around Digital, Engineering and Cloud powered by a broad portfolio of technology services and software. The company generated consolidated revenues of \$11.79 billion over the 12 months ended June 30, 2022. To learn how we can supercharge progress for you, visit hcltech.com.

hcltech.com

