

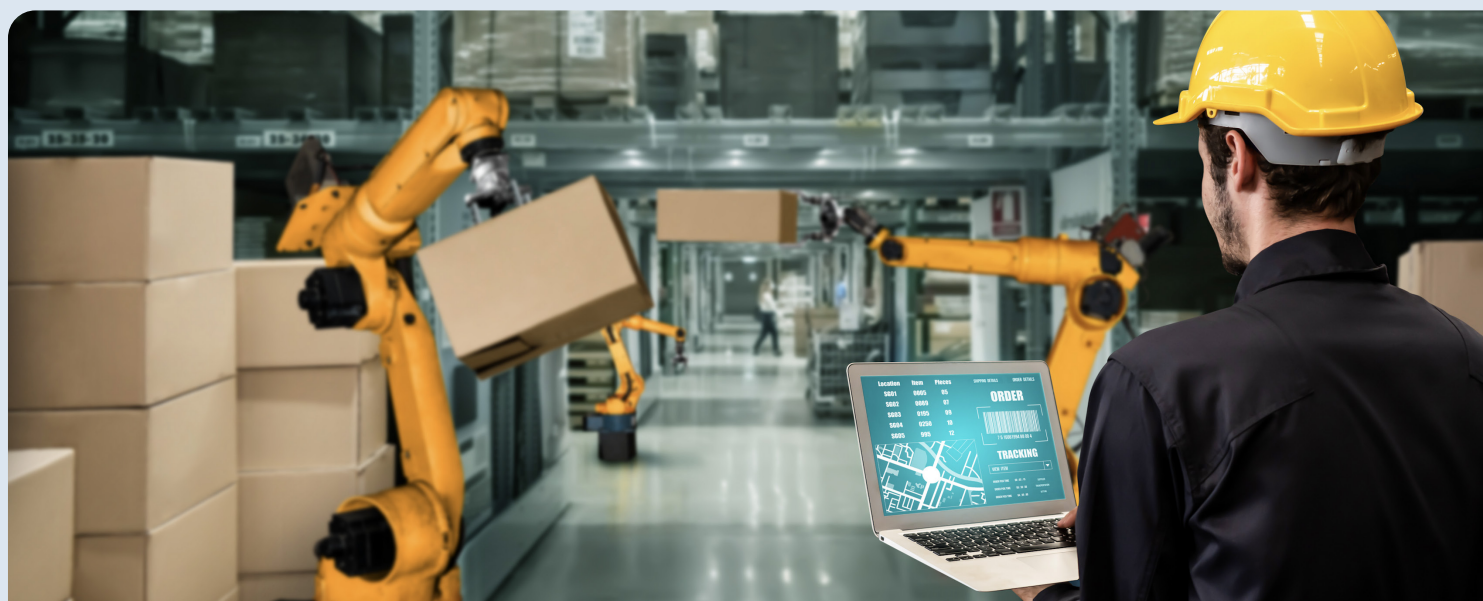
Transforming warehouse management systems

Reduce transition period and application understanding with Blue Yonder and HCLTech



Introduction

With the changing business scenario, warehousing has seen a shift from legacy systems to automation. Earlier, automation was applied in select phases of warehousing like constructing buildings, whereas nowadays there is a high demand across channels to implement automation and thus, enable seamless warehousing systems. HCLTech has developed a pre-configured questionnaire template aligned with the industry standard which will help the customer and HCLTech to scope existing landscape & benchmark with industry best practices which are aligned of BY Discrete WMS.



About the **solution**

The solution has a list of pre-identified questions that help the client understand the scope of improvement in their existing WMS system.

Its features include:



Pre-defined Questions
to understand WMS



Landscape of application
& business requirements

Solution Highlights

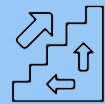
Some of the key highlights to note are:



Easy to use & faster deployment



Aligned with global best practices for warehousing processes



High level maturity understanding of the WMS Landscape

1.1 Warehouse Configuration

Ref.No	Sub-Section	Base Requirement
1.1.1	Multiple inventory owners in a single physical warehouse	Yes
1.1.2	Slotting optimization	Future requirement
1.1.3	User defines codes (e.g. adjustments, hold reasons etc.)	Yes
1.1.4	User-configurable alerts setup support	Would need this-currently email driven. Need to categorize in report
1.1.5	Activity tracking (audit trail) capability based on user-configurable time period for all data elements	Yes
1.1.6	Automatic data archiving capability based on user-configurable time period for all data elements	5 years of transactional data for Archive. 18 months for ops data in the system
1.1.7	Supports RDT (Handheld guns) operations	Yes
1.1.8	System lets you associate audio clips, digital documents, images and video files to objects (such as items, assets and workflow instructions) to provide additional information about the object	Future requirement
1.1.9	Real time inventory update integration	Once a day file sent to customers
1.1.10	Serialization/Batch management	Yes
1.1.11	Ability to maintain centralized Yes master data	Yes
1.1.12	Automation	Interface with TMS

1.2 Visibility & Traceability

	Complex	Medium	Simple	Grand Total
Asset management			1	1
Customer specific reporting		1		1
General & Administrative	2	1	2	5
Inventory management and cycle count	2	3	4	8
Kitting/ Customer	2	1		3
Location Mapping		2	1	3
Move Tasks	1			1
Order management		1	4	5
Packing and loading and dispatch	3	1	2	6
Planning	1			1
Putaway		1	2	3
Receiving	2	4	5	11
Replenishment			4	4
Returns/RMA		1	2	3
Standard Metrics and Reporting	4	1	7	12
Testing & Quality Control		2		2
Visibility & Traceability		1	2	3

Opportunity Areas (in measurable metrics)	Value
Total order cycle time	< 8 hours
Internal order cycle time	<3.4 hours
Perfect order completion index	>= 99.3%
Dock to stock cycle time	< 2.4 hours
SO received per hour	>= 15 per hour
Lines received and putaway per hour	>= 58.8 per hour

Business Highlights



80%

Understanding of application



50%

Reduction in transition period

HCLTech | Supercharging Progress™

HCLTech is a global technology company, home to 219,000+ people across 54 countries, delivering industry-leading capabilities centered around digital, engineering and cloud, powered by a broad portfolio of technology services and products. We work with clients across all major verticals, providing industry solutions for Financial Services, Manufacturing, Life Sciences and Healthcare, Technology and Services, Telecom and Media, Retail and CPG, and Public Services. Consolidated revenues as of 12 months ending September 2022 totaled \$12.1 billion. To learn how we can supercharge progress for you, visit hcltech.com.

hcltech.com

