

HCLTech

TechBee Programme

Become Job Ready
After Secondary School



EARLY CAREER PROGRAM

hcltech.com/careers/techbee-newzealand

What does HCLTech do?

Our digital transformation employees help enterprise businesses and government organisations to:



Improve their tech

We work across all technology domains like Application and Infrastructure Services, Engineering, Research & Development, and Digital Processes for Operations.



Add tech intelligence

We work on cutting edge technologies like Data Analytics, Internet-of-Things, Cloud, Cybersecurity, IT Governance, Risk & Compliance, Artificial Intelligence, and Machine Learning.



Dream big

We build and reimagine existing technology products and platforms.

About HCLTech New Zealand

We have been a leading employer and a technology partner of choice in New Zealand since 1999. HCLTech delivers integrated technology services to New Zealand's leading companies, and has offices located in Auckland, Hamilton, and Wellington. We are growing fast, and we want more people with a passion for technology to join us!



\$12.6 billion revenue



60 countries



225,900+ people



About the Programme

HCLTech New Zealand TechBee Programme is a pathway for secondary school students interested in a job and a career in the technology sector. Candidates who enter the programme undergo three months of Foundation Skilling. Post successful completion, learners have the option to undergo the HCLTech's Career Aptitude test which is the entry point to TechBee. The programme provides opportunities to pursue full-time jobs with HCLTech upon successful completion of a part-time paid internship.

Eligibility Criteria



Completed NCEA Level 2 assessment at 'Achieved' level or higher



Completed secondary school in the last three years



New Zealand Citizen or Permanent Resident

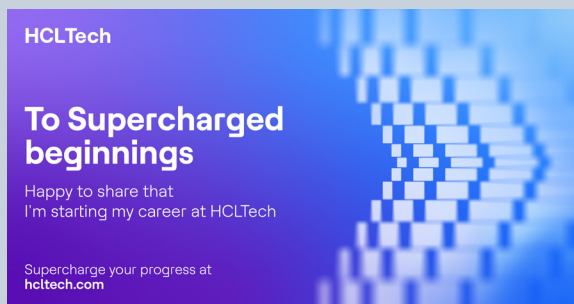


Programme **Outline**

Phase 01

Foundation Skilling

- Three-months free online skilling
- Virtual instructor-led classes and self-paced sessions
- Modules include IT Essentials, Ethics and Business Communications
- Receive the HCLTech badge after successfully completing Phase 1



Phase 02

Stream-specific skilling & internship

- Nine-month internship including stream-specific training
- Part-time paid internship
- Job-ready

Upon successful completion of both foundation skilling and an internship, you are offered full time employment with HCLTech New Zealand.

Learners enrolled in Foundation Skilling can choose to withdraw within the three month duration. Learners who wish to progress to an internship must successfully complete the requirements of Foundation Skilling.

Mentors and pastoral care are provided throughout the programme.

TechBee **Voices**

rr

I actually had a lot of fun learning the professional and the technical part of it... it taught me how one transitions from this school life into the work life... I got introduced to coding for the first time... I've always wanted to go into IT and thought this was a pretty good opportunity for me to join the IT world kinda early on."

Kunal Puri, TechBee

rr

My experience with the TechBee program has been really good and it's been pretty streamlined and easy to keep up along with online lectures every week... TechBee helps to really get a foot in the door in an IT career. It really helped me secure better jobs quicker. It also helped in increasing my knowledge base so it's handy, and helped get good work experience."

Joel Willoughby, TechBee

Programme Pathways

01 Complete registration

02 Complete assessment challenge

03 Video Interview

04 Offer/ acceptance

05 Onboarding and orientation

06 Start the programme and your career

Where will it lead you?

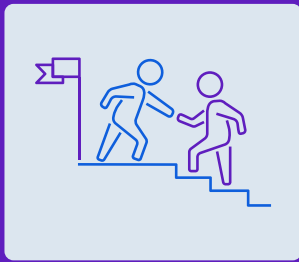
You may start your career as an Analyst, Designer, Developer, Test Administrator, or Support, and can advance depending upon the technology stream you are trained in and your career aspiration.



If you are offered a place in the programme, the first three months are about building your foundation skills. Modules include IT Essentials, Business Ethics, and Business Communications.

The next nine months start with a Career Aptitude Test, and if successful, you are offered a part-time paid internship that involves on-the-job learning and stream specific training as a TechBee. During your internship you will gain practical work experience, often in a client environment.

Upon successful completion of the TechBee programme, you move into a full-time entry level role at HCLTech New Zealand, and if you'd like to pursue higher education, we can financially support you to do this on a part-time basis.



Support?

Your success is our priority

You are assigned mentors who will guide you through administrative support, projects, and the technical work needed to complete the Foundation Skilling and Internship successfully.

Why be a TechBee?

There is an acute skill shortage worldwide. HCLTech New Zealand is working with stakeholders to address the skills gap and provide job and career opportunities to New Zealanders.

A lifetime of Learning

TechBee is just the start of your tech learning adventure. Your next step could be an HCLTech - supported university degree!

Great job prospects

There's a worldwide shortage of people with technology skills. Complete our TechBee Program and you'll have plenty of job opportunities to choose from!

Celebrate diversity

With our presence in many countries, and our large global workforce of ideapreneurs representing numerous nationalities, we celebrate diversity every day.

Be part of our global family

We know we're better together. We encourage our people to collaborate, take smart risks, experiment, and lead their ideas to execution in an inclusive and innovative environment.

HCL (New Zealand) Ltd.

Auckland

HCL (New Zealand) Ltd.
Suite #1, Level 12, 48 Emily Place,
Auckland 1010
New Zealand

Hamilton

HCL (New Zealand) Ltd.
Level 2, 660 Victoria Street, Hamilton Central,
Hamilton 3204
New Zealand

Wellington

HCL (New Zealand) Ltd.
Suite no 1618, Level 16, Vodafone on the Quay,
157 Lambton Quay, Wellington,
New Zealand

DWS (New Zealand) Limited

HCL (New Zealand) Ltd.
Suite no 1618, Level 16, Vodafone on the Quay,
157 Lambton Quay, Wellington,
New Zealand

HCLTech | Supercharging Progress™

HCLTech is a global technology company, home to 225,900+ people across 60 countries, delivering industry-leading capabilities centered around digital, engineering and cloud, powered by a broad portfolio of technology services and products. We work with clients across all major verticals, providing industry solutions for Financial Services, Manufacturing, Life Sciences and Healthcare, Technology and Services, Telecom and Media, Retail and CPG, and Public Services. Consolidated revenues as of 12 months ending March 2023 totaled \$12.6 billion. To learn how we can supercharge progress for you, visit hcltech.com

hcltech.com

