

Integration leads to transformation

HCLTech-MuleSoft partnership is playing a catalyzing role in furthering global adoption



Enterprises worldwide are fast transitioning into API-led Integrations and this journey requires organizations to appreciate how these connections between data, applications and services would impact the life of a slew of stakeholders like the customers, end users, suppliers, and employees.

The secret to becoming a flexible API-led integration enterprise, not only necessitates systematic and structural re-jigging of people and technology but also a more holistic re-imagination of the operating model to proactively address the evolving opportunities and challenges of a dynamic world. This operating model would also provision for a persistent presence of C4E (Centre for Enablement) that shall pioneer and facilitate the enterprise to reuse, repurpose and scale their integration solutions across business units and use cases to truly drive home the Integration ROI.

In such a context, the HCLTech-MuleSoft partnership is empowering customers worldwide to consider their integration strategy as a key input to their overall corporate strategy and use API-led Integration as the engine for growth in the age of Digital Transformation.

MuleSoft's Anypoint Platform™ is the world's leading integration platform for SOA, SaaS, and APIs. MuleSoft provides exceptional business agility to companies by connecting applications, data, and devices, both on-premises and in the cloud with an API-led approach.

By leveraging Anypoint Platform, companies can re-architect their SOA infrastructure from legacy systems, proprietary platforms, and custom integration code to create business agility.

HCLTech's MuleSoft Practice

HCLTech has 8+ years relationship with MuleSoft. Over the years, HCLTech has developed deep experience & strong track record for delivering innovative integration solutions across myriad verticals. During this time, HCLTech has emerged as MuleSoft's invite-only Strategic SI partner in North America.

Our strong partnership with MuleSoft brings a powerful convergence of well-integrated systems, intelligent API creation and actionable insights that enable us to accelerate the path to value for our clients across industries.

Together, HCLTech and MuleSoft have invested in training, certifications, new client opportunities and project implementations. Working together, make it we have helped clients seamlessly scale their digital transformation initiatives. HCLTech has also assisted global enterprises with the adoption of MuleSoft technology and organizational change, by leveraging the C4E mode, enabling them to leverage MuleSoft in combination with HCLTech's in-house accelerators and technical capabilities.

With increased focus on vertical specific offerings, we are collaborating with MuleSoft to author joint papers on API led Connectivity and how it can help solve challenges being faced by Utilities, Open Banking and E-Commerce verticals.



HCLTech's MuleSoft centric Integration Service Offerings

HCLTech offers a holistic suite of services (from advisory to deployment to scalability) centered around MuleSoft

SERVICE PORTFOLIO						
Integration Strategy	Digital Roadmap	Platform Evaluation	Program Assessment	Operating Model assessment	Adoption Approaches	Platform Governance
Integration Architecture	Assess "As Is" Architecture	Highlight Opportunity Areas	Vision the Target State	Guiding Principles and Standards	Patterns and Anti Patterns	Platform Principles
API Led Integration	Platform Foundation	API Strategy, & Design	API Development Factory	Usage based Payment	Hybrid integration Platform	Support & Maintenance
Integration Platform Delivery	Integration Platform as a Service (iPaaS)	On-Prem Hybrid and Public Cloud	Low/No Code platform	Hosting & Licensing Model	Integration platform migration and upgrade	Proprietary Tools & Accelerators
Integration @ Scale	Integration COE & MuleSoft C4E	Green field/Brown field integration	Reusability, scalability of APIs	Multi-integration Governance	IPaaS and Ecosystems integration of co-existence	Legacy Transformation

Figure: HCLTech's MuleSoft focused Integration Service Catalogue



Integration Strategy

Helping our clients with a digital roadmap to navigate their business challenges



Integration Architecture

Working with our clients to form a target state vision and outlining guiding principles, technologies, and standards to reach that state



API led Integration

In the true spirit of MuleSoft's 3 layered architecture, we design, develop, support, and enable monetization of APIs



Integration Platform Delivery

In the true sprit of Enterprise iPaaS, across environments, with support from HCLTech's own IPs and accelerators



Integration at Scale

With support from HCLTech's CoE and MuleSoft's C4E methodology, to enable reusability and scalability of APIs to drive home maximum RoI.



HCLTech's MuleSoft Focused IPs and Accelerators- ADvantage™ MuleSoft

From code automation to managed integration services and reusable utilities library to a next generation reporting solution, the **ADvantage™ MuleSoft** suite provides a complete spectrum of MuleSoft focused accelerators that would not just kickstart an enterprise's MuleSoft implementation journey on the right path but also nurture, guide and optimize the milestones along the way.



ADvantage™ Code for MuleSoft

HCLTech's framework to generate Mule project code, Unit test code, CI/CD pipelines using only the API specification. Improves reliability, quality, consistency and reduces the development time



iPaaS Service

HCLTech offers governance, management, development & support of an integration platform as a single service offering to the customer. The solution also brings in a tool to 'shop' for integration development services from the team



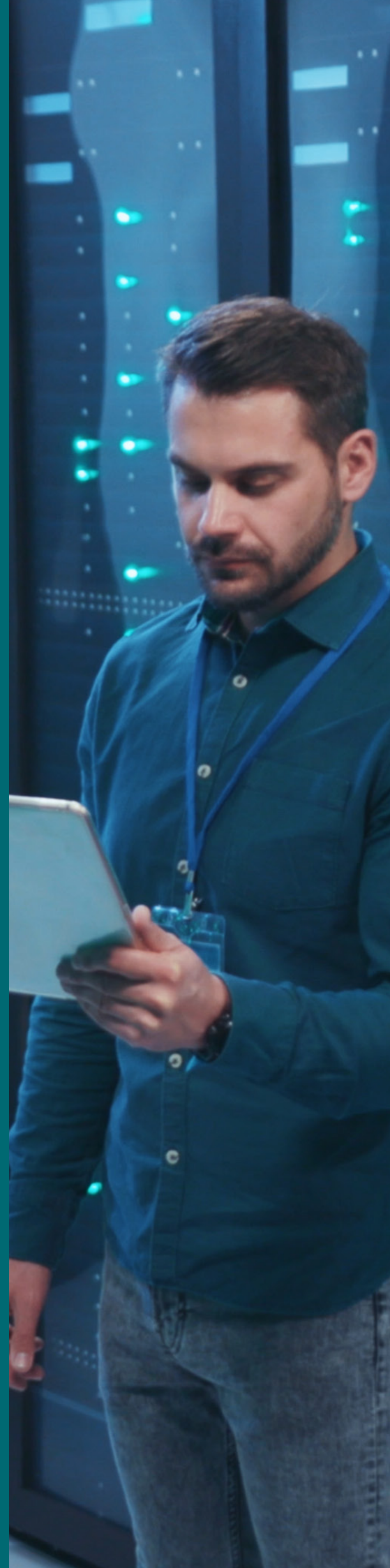
ROAR

A next generation reporting solution to deliver end-to-end transaction tracking, domain specific and business-related insights using information aggregated from logs of different applications including integrations



MuleSoft Utilities Library

Common reusable utilities like error handling, response pagination, common logging, etc. packaged as an easy to Mule library that accelerates Mule implementations. As a C4E managed deliverable, common code snippets are standardized



Key Success Stories

While we have implemented MuleSoft and enabled organizations worldwide on the path of API led business transformation, here are some of our key success stories in the MuleSoft ecosystem:



Leading Australian Mutual Organization

- Implemented the middleware architecture on MuleSoft's Anypoint Platform, to support API-led integration.
- HCLTech offers managed services (Dev and Support), licensing services, catalog-based pricing model, C4E etc.
- Operational efficiency improved by ~15%
- HCLTech's ADvantage™ Code for MuleSoft and ROAR framework being leveraged
- Saved ~25% development cost due to HCLTech
- Migrated IIB to MuleSoft and upgraded Mule 4 in some instances



Global coffee and beverage company

- Worked with MuleSoft Professional Services and introduced technology frameworks, industry best practices and process
- Centralized/Business centric demand intake across LoBs was instituted as a part of the MuleSoft C4E implementation
- Guardrails for enhancements; toolset and frameworks to accelerate the execution of the integration projects were put in place
- + Reduction in the Opex expenses (20% - 25%) from reusable components



Large producer of cans, tubes and cores

- Customer was looking to overhaul their IT landscape in order to digitize their operations in line with their 'Factory of the Future' vision
- HCLTech and MuleSoft conducted joint workshops to understand the customer's vision'
- Delivered the integration platform architecture and platform backlog for the environment gaps
- Delivered the Center for Enablement (C4E), defined objectives and high-level implementation plan



One of the top 5 Gas Distributors in UK

- The client wanted to transition myriad enterprise applications to cloud in a bid to rapidly respond to hanging business needs
- HCLTech established a fully automated DevSecOps platform to enable rapid application delivery
- Significant cost savings owing to 10% reduction in infrastructure footprint
- Modernized the IT landscape by leveraging MuleSoft for API based cloud-to-cloud and hybrid integrations
- The customer envisaged on migrating all wM integrations and file batch integrations from Filemovern to MuleSoft



Large US based Manufacturing Company

- The customer wanted to transform in line with Industry 4.0 design principle and goals
- Implemented Azure DevOps CI/CD pipelines for build automation
- Enhanced existing Mule common services using HCLTech's MuleSoft Utilities Library
- In addition to integration services, HCLTech also provides services for core applications like MES, PLM, QMS
- HCLTech setup Anypoint Runtime Fabric on Azure to augment existing on-prem runtimes



Large APAC based Central Bank

- HCLTech identified MuleSoft as the platform of choice after baselining other leading platforms
- Leveraged the API for overseeing and managing the flow of payments and information around payments across different government agencies
- Implemented POC for the most common use cases to ensure end-to-end integration of the platform and API gateways
- Developed a scalable and contemporary API gateway service on a cloud-based platform, to securely expose the bank's internal business functions

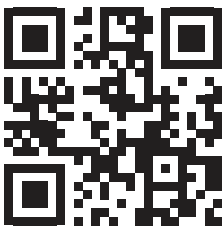


Mail to us at digitaltransformation@hcl.com



HCL Technologies (HCL) empowers global enterprises with technology for the next decade today. HCL's Mode 1-2-3 strategy, through its deep-domain industry expertise, customer-centricity and entrepreneurial culture of ideapreneurship™ enables businesses to transform into next-gen enterprises.

HCL offers its services and products through three lines of business - IT and Business Services (ITBS), Engineering and R&D Services (ERS), and Products & Platforms (P&P). ITBS enables global enterprises to transform their businesses through offerings in areas of Applications, Infrastructure, Digital Process Operations, and next generation digital transformation solutions. ERS offers engineering services and solutions in all aspects of product development and platform engineering while under P&P. HCL provides modernized software products to global clients for their technology and industry specific requirements. Through its cutting-edge co-innovation labs, global delivery capabilities, and broad global network, HCL delivers holistic services in various industry verticals, categorized under Financial Services, Manufacturing, Technology & Services, Telecom & Media, Retail & CPG, Life Sciences, and Healthcare and Public Services.



www.hcltech.com

As a leading global technology company, HCL takes pride in its diversity, social responsibility, sustainability, and education initiatives. As of 12 months ending on June 30, 2022, HCL has a consolidated revenue of US \$11.79 billion and its 211,000 ideapreneurs operate out of 52 countries. For more information, visit www.hcltech.com