

HCLTech

Start your **Tech**
career with HCLTech
New Zealand



#RiseatHCLTech

hcltech.com/careers/rise-at-hcl-newzealand

What does HCLTech do?

Our digital transformation employees help enterprise businesses and government organisations to:



Improve their tech

We work across all technology domains like Application and Infrastructure Services, Engineering, Research & Development, and Digital Processes for Operations.



Add tech intelligence

We work on cutting edge technologies like Data Analytics, Internet-of-Things, Cloud, Cybersecurity, IT Governance, Risk & Compliance, Artificial Intelligence, and Machine Learning.



Dream big

We build and reimagine existing technology products and platforms.

About HCLTech New Zealand

We have been a leading employer and a technology partner of choice in New Zealand since 1999. HCLTech delivers integrated technology services to New Zealand's leading companies, and has offices located in Auckland, Hamilton, and Wellington. We are growing fast, and we want more people with a passion for technology to join us!



\$12.1 billion revenue



54 countries



219,000+ people

Rise at HCLTech

About the Programme

The Rise at HCLTech programme is a gateway to start and fast track your technology career. The programme is focused on providing opportunities for Maori and/or Pasifika, women, and others looking to reskill and upskill. Entry to the programme starts with a conversation to assess your desire and fit based on the eligibility criteria. Upon successful completion of both foundation skilling and internship, you are offered full time employment with HCLTech New Zealand.

Eligibility Criteria



New Zealand Citizen or Permanent Resident



Completed secondary school – the equivalent of NCEA Level 2

Maori and/or Pasifika

Mature age upskillers & reskillers

Women

Migrants

Disabled

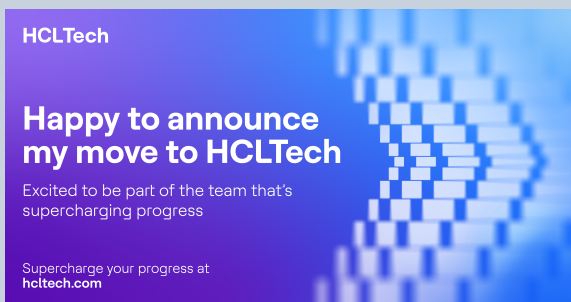


Programme **Outline**

Phase 01

Foundation Skilling

- Three-months free online skilling
- Virtual instructor-led classes and self-paced sessions
- Modules include IT Essentials, Ethics and Business Communications
- Receive the HCLTech badge after successfully completing Phase 1



Phase 02

Stream-specific skilling & internship

- Nine-month internship including stream-specific training
- Part-time paid internship
- Job-ready



Learners enrolled in Foundation Skilling can choose to withdraw within three months. Learners who wish to progress to an internship must successfully complete the requirements of Foundation Skilling. Mentors and pastoral care are provided throughout the programme.

Application **Process**

01 Complete registration

02 Complete assessment challenge

03 Video conversation

04 Offer/ acceptance

05 Onboarding and orientation

06 Start the programme and your career

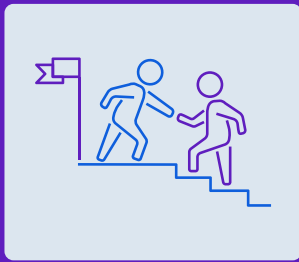


HCLTech is a global technology company, home to 219,000+ people across 54 countries, delivering industry-leading capabilities centered around digital, engineering and cloud powered by a broad portfolio of technology services and products. We work with clients across all major verticals, providing industry solutions for Financial Services, Manufacturing, Life Sciences and Healthcare, Technology and Services, Telecom and Media, Retail and CPG, and Public Services.

Our purpose is to bring together the best of technology and our people to supercharge progress. We're supercharging progress for everyone, everywhere – our clients, partners and their stakeholders, our people, communities, and the planet.

Since our inception, we pioneered several industry mainstays and established leadership position in all our chosen segments.

We're powered by our people – a global, diverse, multi-generational talent – representing numerous nationalities whose unique spark, perspective and boundless passion drive our culture of proactive value creation and problem-solving. Consolidated revenues as of 12 months ending September 2022 totaled \$12.1 billion.



Support?

Your success is our priority

Learning can get you where you want to go. You can come back from a career break, add new skills to your resume, or upskill the skills you have already.

Why Rise at HCLTech?

Learn with purpose

Rise is just the start of your tech learning adventure. Your next step could be an HCLTech supported university degree.

Progress your career

Whether you're upskilling or starting afresh, you're setting yourself up to be a prime candidate for some top job opportunities and accelerate your career forward!

Enjoy a flexible workplace

A willingness and ability to adapt to change – how, when and where work gets done, respects your needs and the needs of HCLTech and HCLTech's clients.

Celebrate diversity

With our presence in many countries, and our large global workforce of ideapreneurs representing numerous nationalities, we celebrate diversity every day.

Be part of our global family

We know we're better together. We encourage our ideapreneurs to collaborate, take smart risks, experiment, and lead their ideas to execution in an inclusive and innovative environment.

HCL (New Zealand) Ltd.

Auckland

HCL (New Zealand) Ltd.
Suite #1, Level 12, 48 Emily Place,
Auckland 1010
New Zealand

Hamilton

HCL (New Zealand) Ltd.
Level 2, 660 Victoria Street, Hamilton Central,
Hamilton 3204
New Zealand

Wellington

HCL (New Zealand) Ltd.
Suite no 1618, Level 16, Vodafone on the Quay,
157 Lambton Quay, Wellington,
New Zealand

DWS (New Zealand) Limited

HCL (New Zealand) Ltd.
Suite no 1618, Level 16, Vodafone on the Quay,
157 Lambton Quay, Wellington,
New Zealand

HCLTech | Supercharging Progress™

HCLTech is a global technology company, home to 219,000+ people across 54 countries, delivering industry-leading capabilities centered around digital, engineering and cloud, powered by a broad portfolio of technology services and products. We work with clients across all major verticals, providing industry solutions for Financial Services, Manufacturing, Life Sciences and Healthcare, Technology and Services, Telecom and Media, Retail and CPG, and Public Services. Consolidated revenues as of 12 months ending Sept 2022 totaled \$12.1 billion. To learn how we can supercharge progress for you, visit hcltech.com.

hcltech.com

