

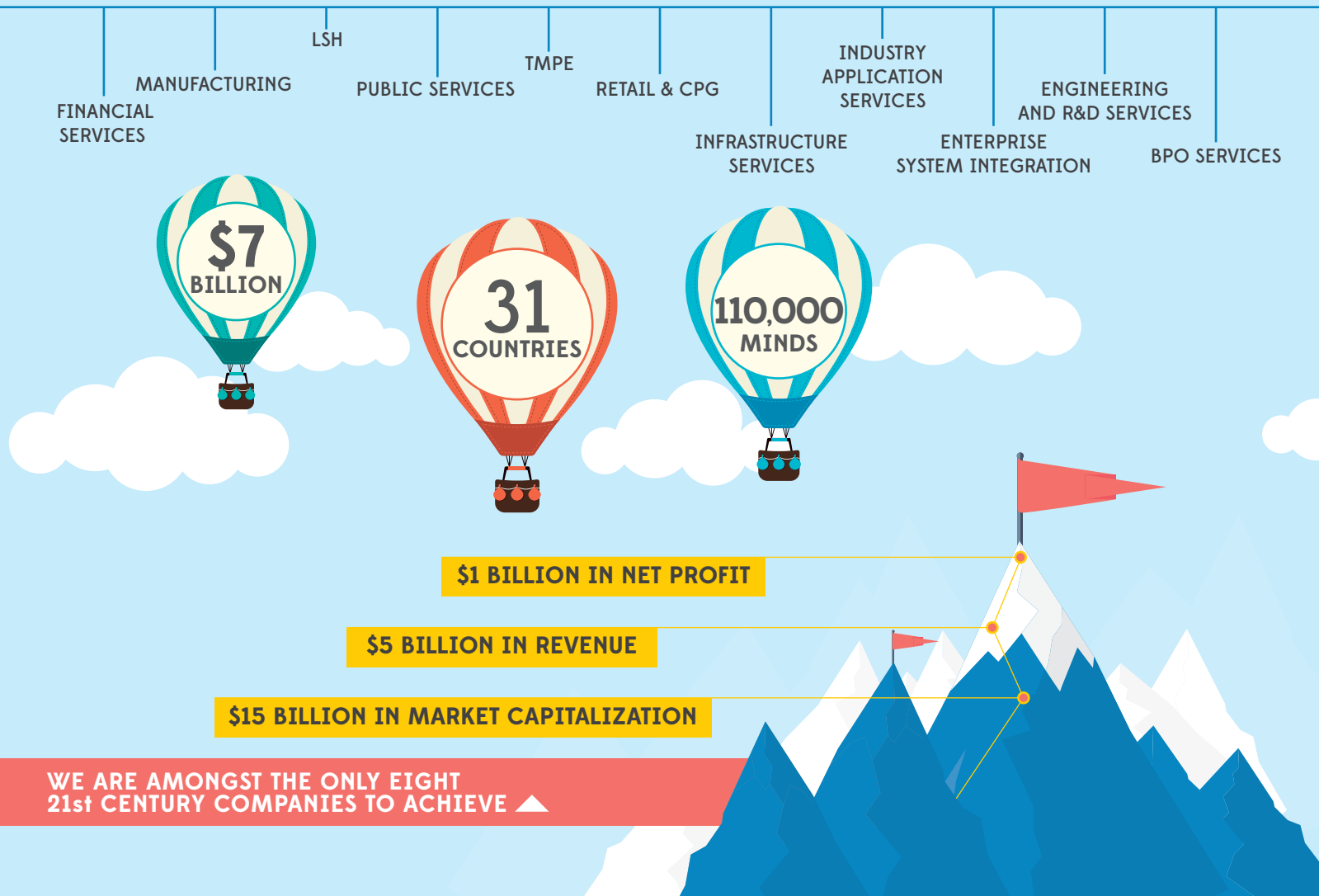


ENGINEERING AND R&D SERVICES

21ST CENTURY
TECHNOLOGIES

HCL - A \$7 BILLION GLOBAL ENTERPRISE

HCL Technologies brings IT and engineering services expertise under one roof to solve complex business problems for its clients. Leveraging our extensive global offshore infrastructure, network of offices in 31 countries and 110,000 employee base, provide holistic, multi-service delivery in industries such as financial services, manufacturing, consumer services, public services and healthcare. HCL's 38 year journey has been truly transformational.



ENGINEERING SERVICES AT HCL

HCL ERS - THE #1 ENGINEERING SERVICES PROVIDER FROM INDIA

We love engineering. From helping build next generation airplanes, microscopic medical devices, smart or consumer devices; we love to help our customers realize their business strategy through product engineering, platform solutions and unique engineering experiences. Being part of a computing product company that started more than three decades ago, HCL ERS itself has helped 300+ customers launch over thousands of products in the last ten years. Our passion for helping our customers succeed in the global market through engineering innovation and experience has helped HCL ERS to be one of the largest global engineering services providers.



Gartner

Endo selected HCL as one of its partners not only for its technical depth and expertise, but more importantly because it was able to secure HCL's commitment to a long term R&D partnership.



The HCL-Rockwell Collins relationship is a model case study in technology services outsourcing best practices.



Meggitt sees HCL's role not only in executing to statements of work but also in contributing and adding value such as suggesting ideas for design improvements.



FROST & SULLIVAN

We have used HCL all the way from testing, specification engineering, software engineering and areas in media as well.



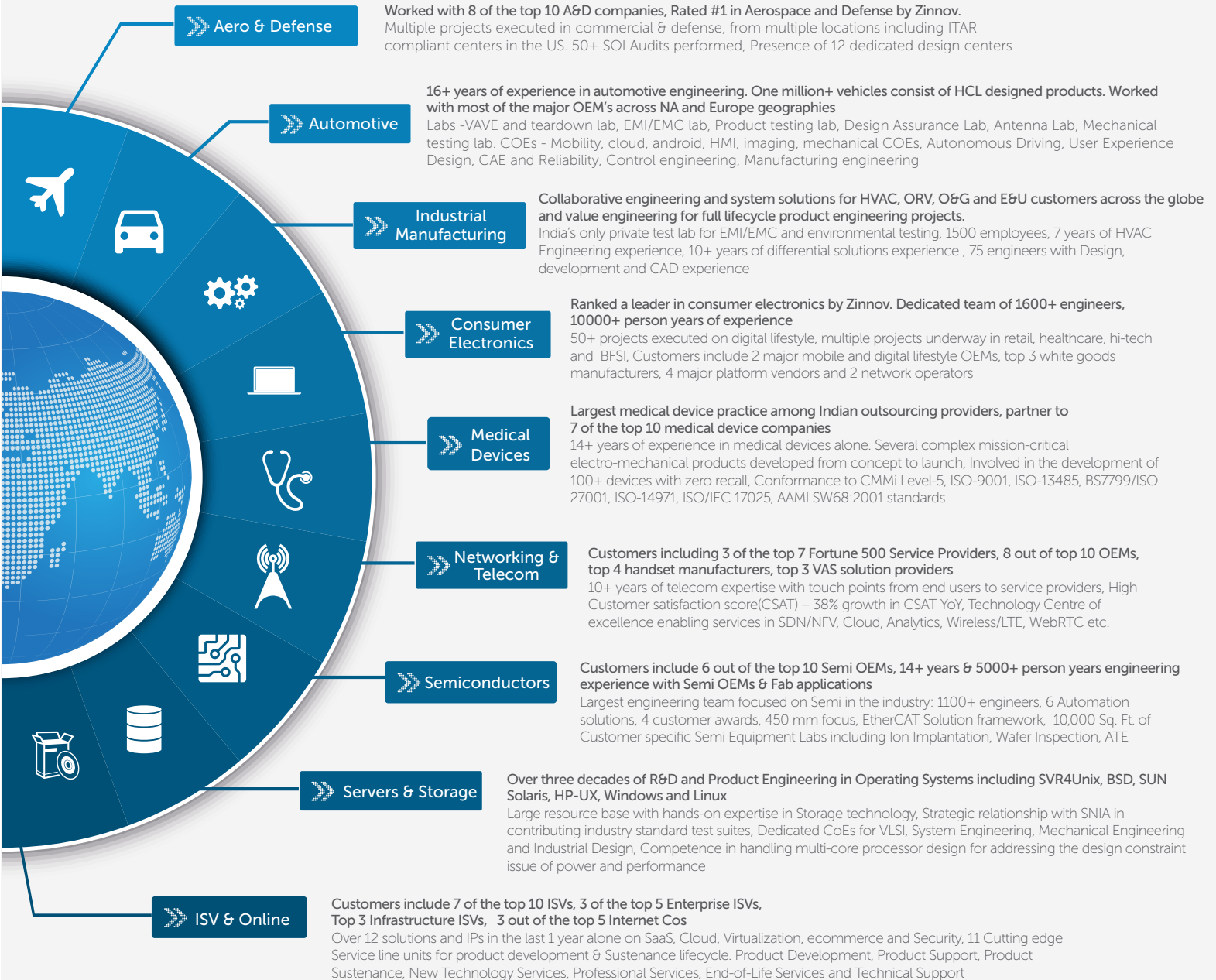
FROST & SULLIVAN

We have given HCL not only development responsibilities, but product management responsibilities and technical engineering responsibilities.



VERTICAL PRESENCE

PRESENCE IN NINE INDUSTRIES



HORIZONTAL SERVICES

SIX CORE ENGINEERING AREAS WITH THREE DECADES OF EXPERTISE

The breadth of horizontal services at HCL ranges from embedded systems to mechanical design. HCL is a leader in developing embedded software and systems with expertise in safety-critical systems for medical devices, automotive electronics and aircraft components. Our DSP expertise and IPs aid us in developing fast embedded

middleware, rich applications and interactive GUIs for consumer electronics and telecom majors. HCL also offers domain-specific hardware engineering and design services in areas such as VLSI, ASIC, FPGA and SoC engineering, prototyping and value-added services.



HCL's mechanical engineering services help customers develop complex mechanical designs and products, significantly reducing their time-to-market and helping them penetrate both emerging and existing markets. Our capabilities include concept design, industrial and mechanical engineering design, CAD modeling and detailing, simulation, analysis and prototyping & testing.

Leveraging our software product engineering experience and expertise, we provide services along the lifecycle of a software product to enable our clients to innovate faster and to

optimize the realization of innovation. Our capabilities in platform ecosystem development, user experience engineering, performance engineering and automation of platform testing are designed to help our customers accelerate solutions to the market.

Our product quality assurance and V&V services are committed to providing high application and system quality, creating an environment where risk is minimized and safety is ensured.

HCL ENGINEERING AND R&DSERVICES IS BUILDING 21ST CENTURY TECHNOLOGIES

Organizations today are experiencing an unprecedented phenomenon. In the previous century, a company would remain listed as a Fortune 500 company for about 60 years. Today, they stay in that list for less than 18 years! Corporate profits are shifting to asset-light idea-intensive sectors. Emerging-market giants are gaining global scale; with the share of US and Western European companies in the Fortune 500 falling. Asset light technologies are creating more incremental value creating the need to pivot to service R&D. Firms with large legacy product R&D organizations will have to transition in a non-disruptive way. Kick starting Service R&D organization will need extensive collaboration. Thus, engineering spend is going to change drastically in the coming decade.

HCL with its engineering heritage, global presence, cumulative revenue impact and being the largest and fastest growing engineering services provider from India is ideally placed to transform your enterprise.

CUSTOMER CENTRIC
Design Centric, Accessible,
Innovative

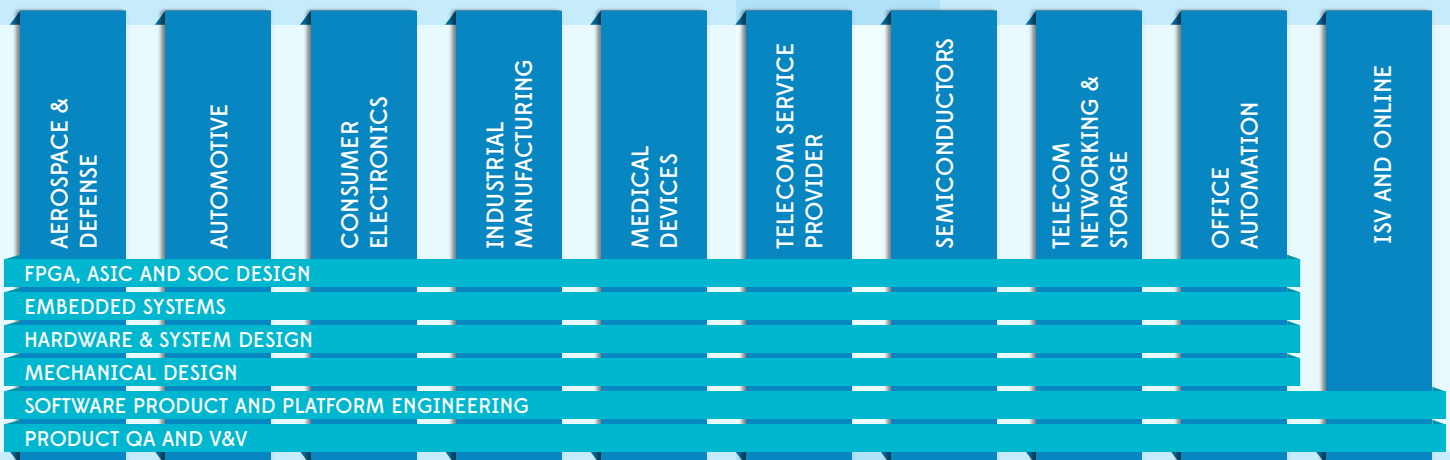


AGILE
Platformized, Continuously Released,
Data Driven

EFFICIENT
Automated, Frugal,
Sustained

The face of 21st century technologies will be **Customer Centric** - in terms of design centrality for industrial and UX design, accessibility & innovation as a service ; **Agile** - in terms of e-business platforms, DevOps framework and engineering analytics; **And Efficient** - in terms of Support & test automation, Value engineering and intelligent sustenance.

HCL ERS has been instrumental in engineering multiple products for 300+ customers across 10 industry verticals. Our engineering services straddle the entire product development lifecycle from new product introduction to end of lifecycle.



SOLUTIONS AND **SERVICE ACCELERATORS**

Intelligent Tech Support (ITS)

ITS is an advanced support analytics framework that utilizes the information mined from support history and other sources to provide recommendations & predictions to end users. Simplify Simplify encapsulates Knowledge Management/Compliance, Skill Mgmt., collaboration, Training & Onboarding which can enable engagement in enhancing the productivity. Availability over cloud ensures that we have anytime anywhere secure access to knowledge.

Platform Acceleration Suite (PAS)

PAS is a powerful software platform from HCL that provides necessary building blocks for building next generation software / services faster. PAS brings together packaged application frameworks, re-usable software components, automation tools for developers & testers, support for best of breed architectural patterns and best practice templates to provide acceleration to the development of software / platforms.

Pangea

Pangea is a Distributed Analytics workbench to get quick & accurate Big data insights. It can help you reduce the time to produce accurate insights by up to 70% with Increased speed, quality and consistency of business decisions

Electronic Device Automation Testing (eDAT)

eDAT is a Modular, Scalable, Extendable and Highly Customizable framework for automated testing of electronic devices. It enables test automation using black box approach through hardware and software interface accelerators.

Intelligent Sustenance Engineering(ISE)

ISE is an advanced engineering analytics framework/solution. it uses complex machine learning algorithm and data mining to provide prediction and recommendation for engineering activities.

Test Automation Framework (TAF)

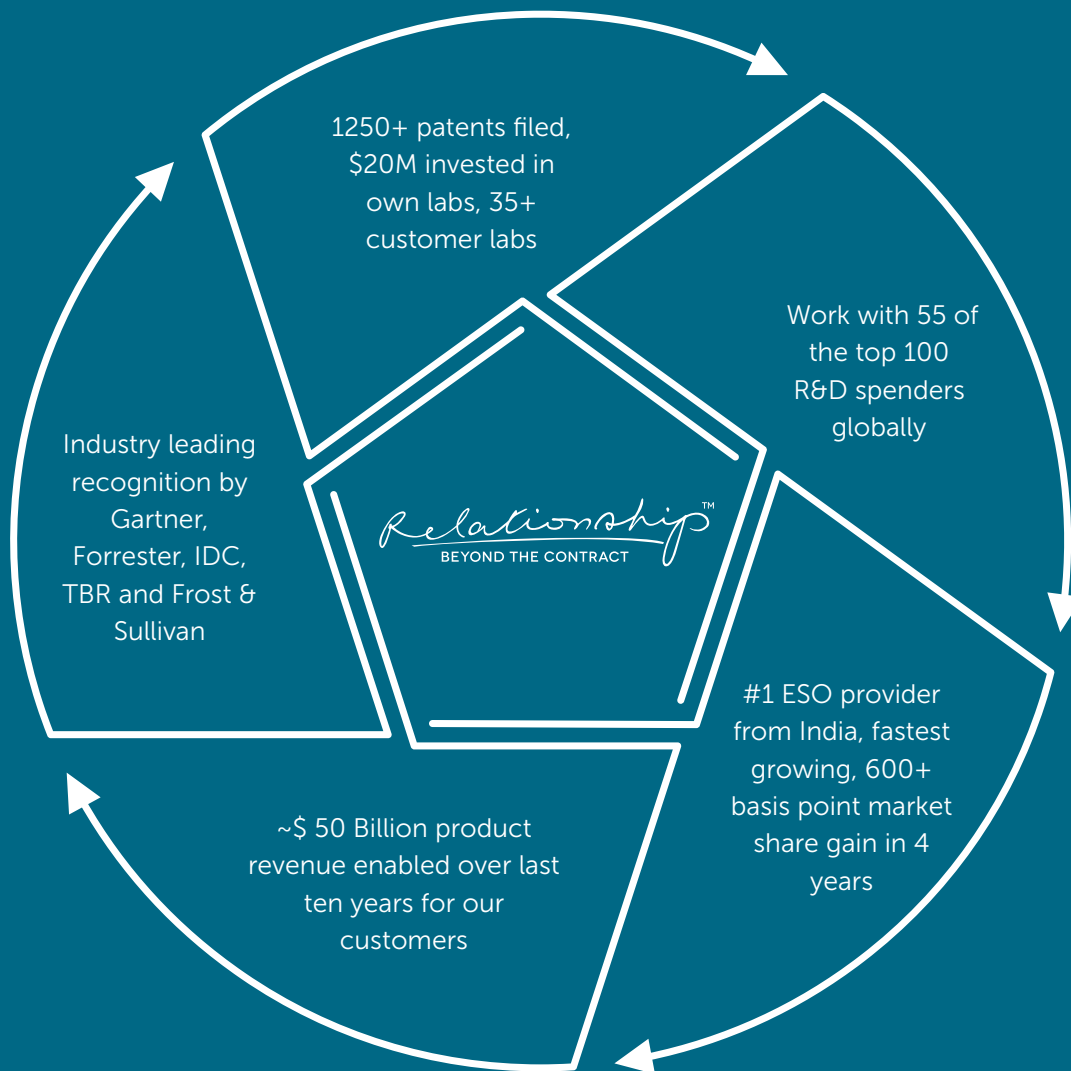
TAF is an test automation acceleration framework to provide an end to end solution for application testing across mobile , web , desktop and embedded platforms.

Integrated Lifecycle Management (iLCM)

iLCM is a service delivery platform that integrates People, Process, Tools & Technology across product life cycle to address Operational Gaps & Inefficiencies

Device Development Next (DDx)

DDx is a set of solutions and knowledgebase that provides 50-80% faster time to market and reduction in device development efforts (embedded software, hardware)



Hello, I'm from HCL's Engineering and R&D Services. We enable technology led organizations to go to market with innovative products and solutions. We partner with our customers in building world class products and creating associated solution delivery ecosystems to help bring market leadership. We develop engineering products, solutions and platforms across Aerospace and Defense, Automotive, Consumer Electronics, Software, Online, Industrial Manufacturing, Medical Devices, Networking & Telecom, Office Automation, Semiconductor and Servers & Storage for our customers.

For more details contact: ims.orchestration@hcl.com

Follow us on twitter: <http://twitter.com/hclers> and our blog <http://ers.hclblogs.com/>

Visit our website: <http://www.hcltech.com/engineering-services/>

HCL