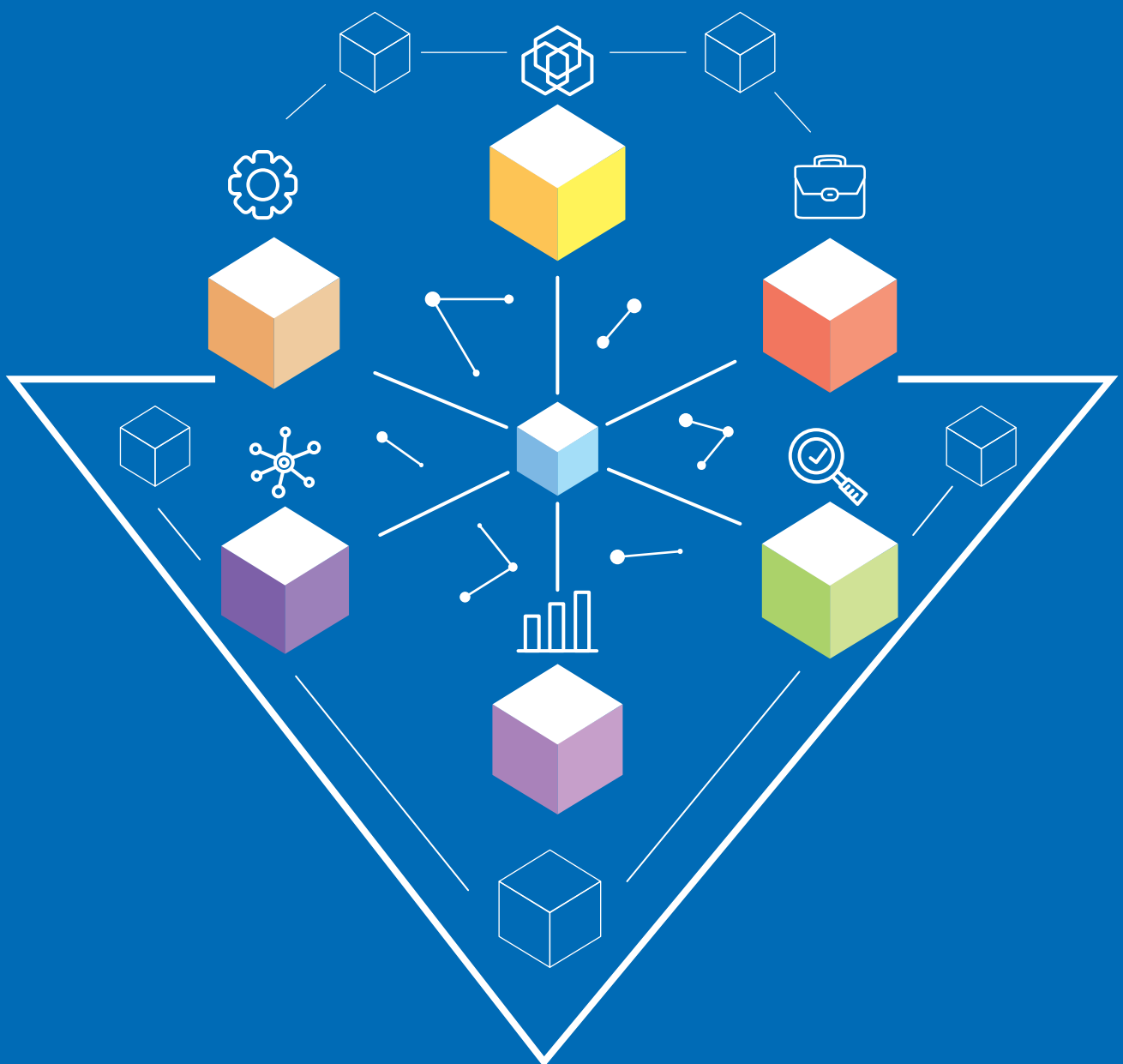


# HCL's HS2: Hyperledger Support Service

A one-stop solution  
to all Hyperledger related support



## Overview

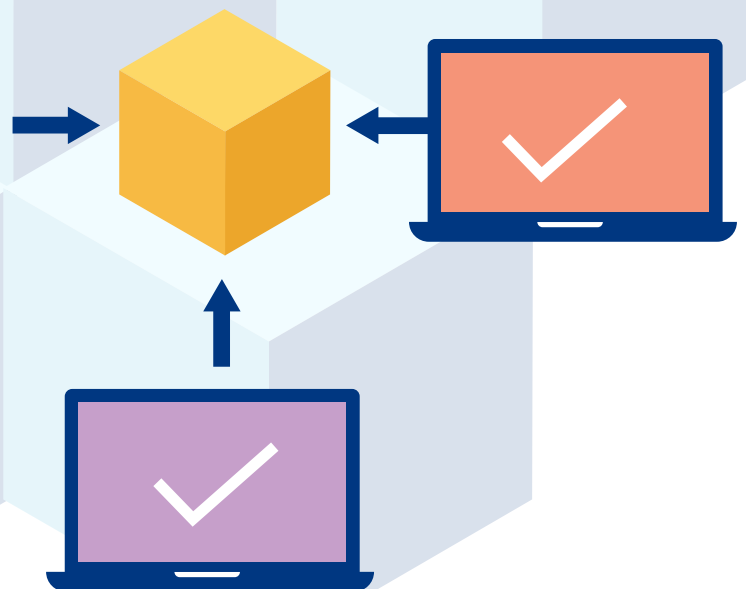


Blockchain is beginning to disrupt multiple business use cases & scenarios across industries. There is a growing awareness about Blockchain at the C-suite and many enterprises have taken a head start by moving from pilots to real blockchain implementations while many others are contemplating doing so. Opensource Hyperledger fabric is most popular platform for advancing blockchain in enterprises , allowing blockchain collaboration and offering different frameworks, standards, and guidelines to build blockchains or related applications.

Even though Hyperledger implementation is simplified owing to its open-source applicability, its post deployment support becomes strenuous because of the non-availability of enterprise support. Enterprises planning for Hyperledger implementation look for a trusted partner that can support the blockchain adoption from pilot to production and provide additional support in blockchain network management. In simpler terms, organizations seek a flexible support model for Hyperledger projects.

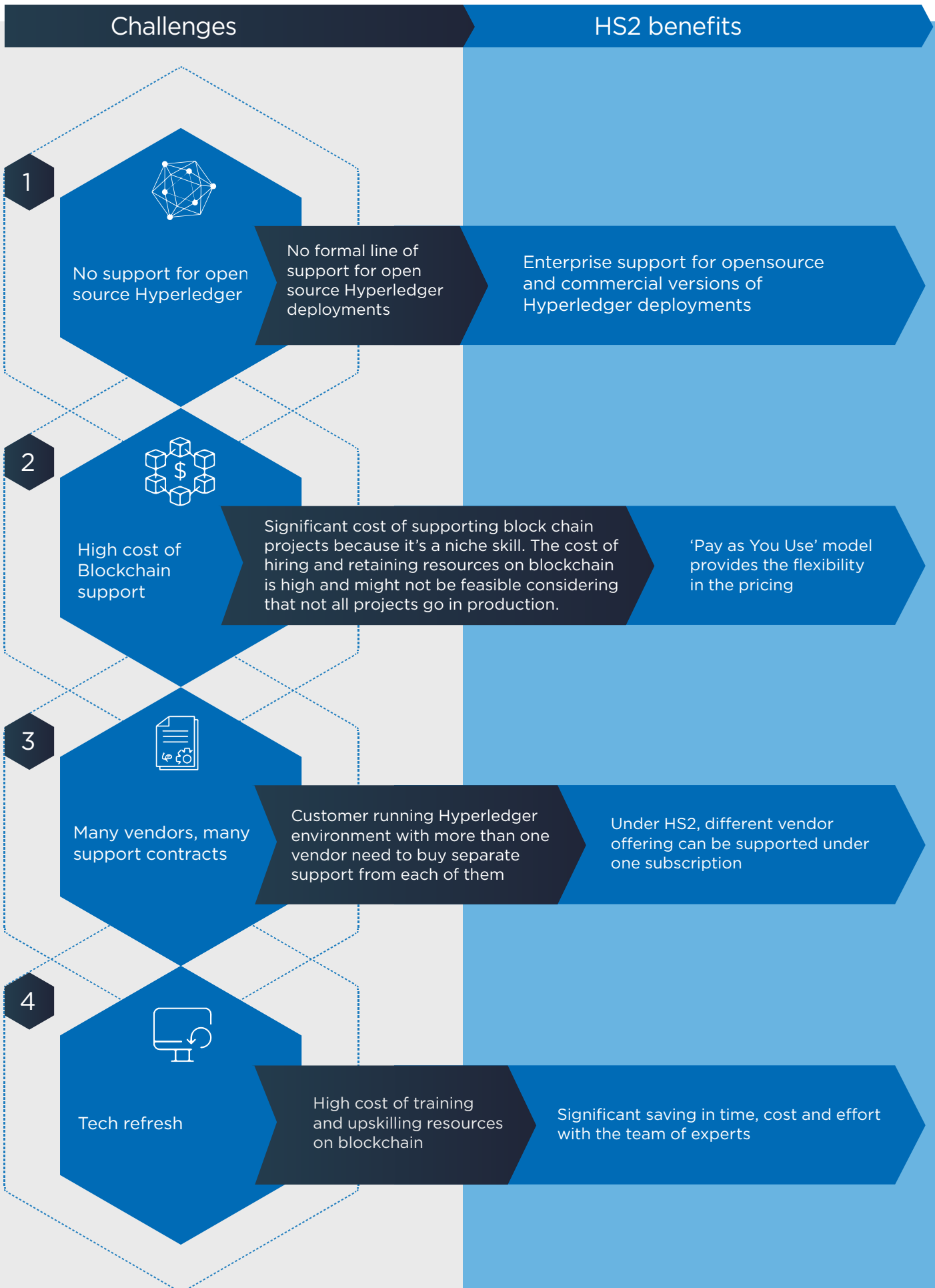
## HCL's Hyperledger Support Services (HS2)

HS2 is a support offering for open source and commercial versions of Hyperledger without locking the customer in a specific vendor offering. It's a one-stop solution helping customers throughout the lifecycle of developing, deploying, and growing the blockchain solution.



# Industry challenges and HS2 benefits

HS2 has identified the challenges present in the industry concerning the adoption and implementation of Hyperledger and presents targeted benefits addressing the issues.



# HS2's unique support model

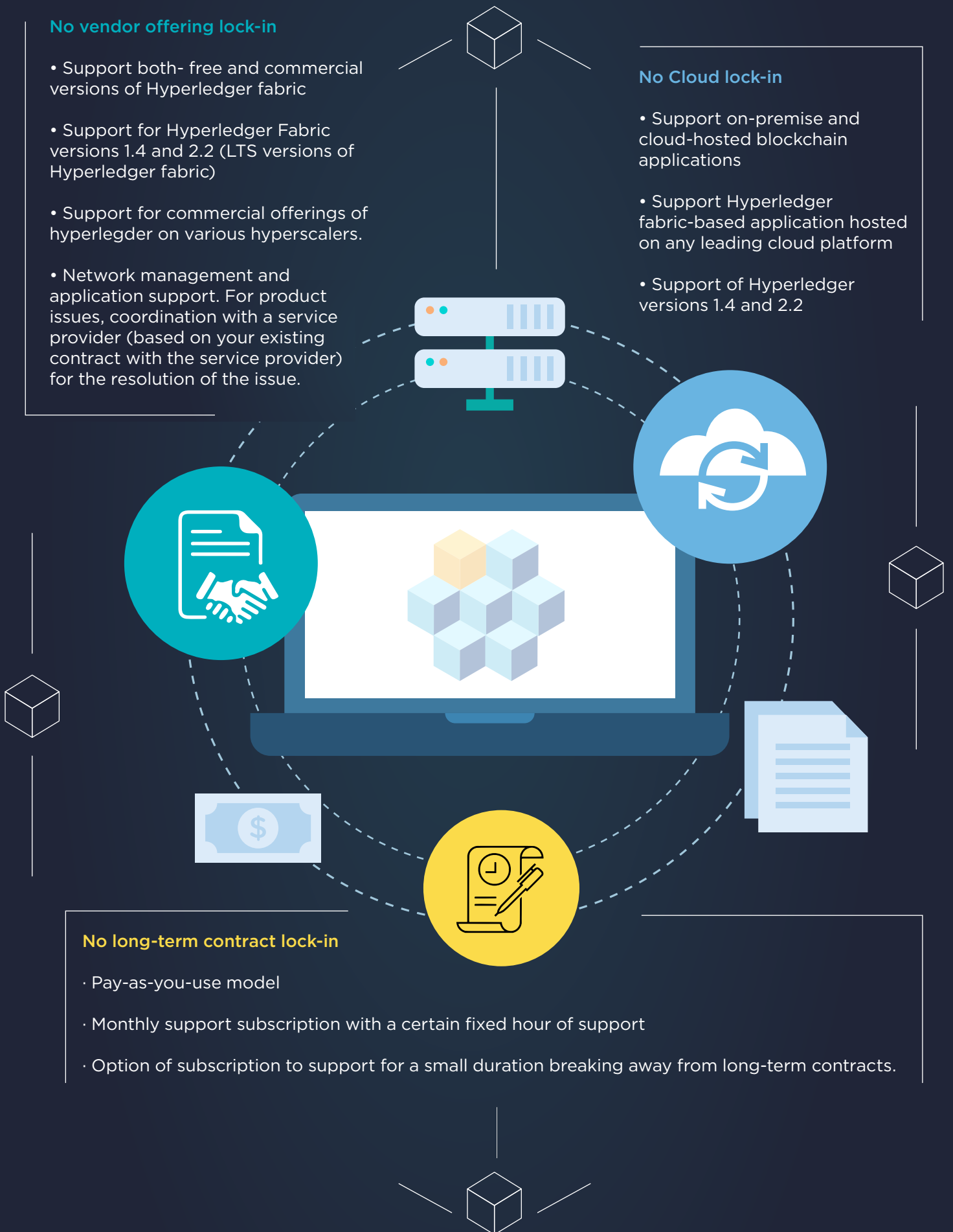
"No lock-in" support model: HS2 follows the incomparable "No lock-in" support across functions to provide all-around assistance when it comes to Hyperledger support.

## No vendor offering lock-in

- Support both- free and commercial versions of Hyperledger fabric
- Support for Hyperledger Fabric versions 1.4 and 2.2 (LTS versions of Hyperledger fabric)
- Support for commercial offerings of hyperlegder on various hyperscalers.
- Network management and application support. For product issues, coordination with a service provider (based on your existing contract with the service provider) for the resolution of the issue.

## No Cloud lock-in

- Support on-premise and cloud-hosted blockchain applications
- Support Hyperledger fabric-based application hosted on any leading cloud platform
- Support of Hyperledger versions 1.4 and 2.2



## No long-term contract lock-in

- Pay-as-you-use model
- Monthly support subscription with a certain fixed hour of support
- Option of subscription to support for a small duration breaking away from long-term contracts.

# HS2 services scope



End-to-end deployment support (onboarding services and container/POD management)



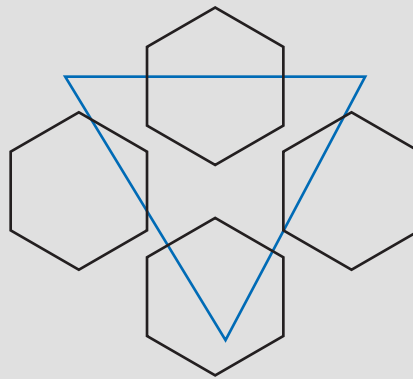
Production support (node monitoring, vendor coordination, and conditional health checks)



Network management (MSP, Channel, Wallet, CA, and node management)



Smart contracts deployment (deploy the existing smart contracts)



HCL has global pool of “Certified Hyperledger Fabric Administrator (CHFA)” resources

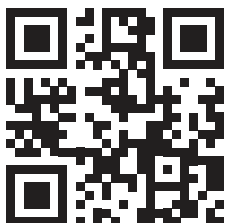
For any queries, please write to [digitaltransformation@hcl.com](mailto:digitaltransformation@hcl.com)



HCL Technologies (HCL) empowers global enterprises with technology for the next decade today. HCL's Mode 1-2-3 strategy, through its deep-domain industry expertise, customer-centricity and entrepreneurial culture of ideapreneurship™ enables businesses to transform into next-gen enterprises.

HCL offers its services and products through three lines of business - IT and Business Services (ITBS), Engineering and R&D Services (ERS), and Products & Platforms (P&P). ITBS enables global enterprises to transform their businesses through offerings in areas of Applications, Infrastructure, Digital Process Operations, and next generation digital transformation solutions. ERS offers engineering services and solutions in all aspects of product development and platform engineering while under P&P. HCL provides modernized software products to global clients for their technology and industry specific requirements. Through its cutting-edge co-innovation labs, global delivery capabilities, and broad global network, HCL delivers holistic services in various industry verticals, categorized under Financial Services, Manufacturing, Technology & Services, Telecom & Media, Retail & CPG, Life Sciences, and Healthcare and Public Services.

As a leading global technology company, HCL takes pride in its diversity, social responsibility, sustainability, and education initiatives. As of 12 months ending on September 30, 2021, HCL has a consolidated revenue of US\$ 10.82 billion and its 187,634 ideapreneurs operate out of 50 countries. For more information, visit [www.hcltech.com](http://www.hcltech.com)



[www.hcltech.com](http://www.hcltech.com)