

HCL

iSAM

Maintenance Operations Planning

Visualize and update detailed work
schedules for complex maintenance



SAP, Done Better.

#SAPbyHCLTech

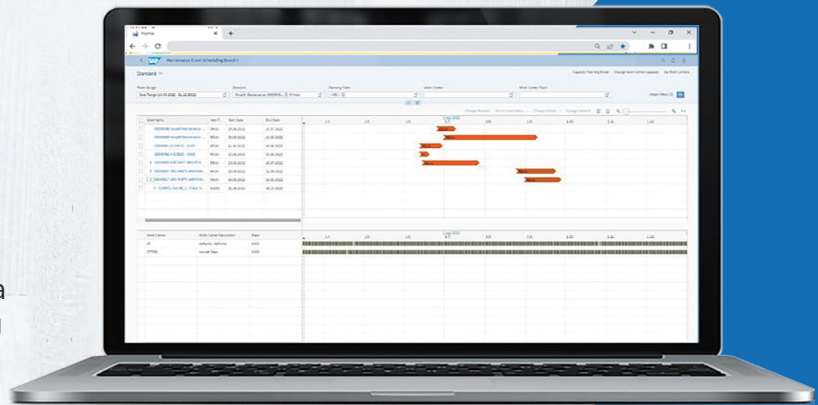
iSAM is a collection of products harnessing the latest SAP technologies to provide world-class intelligent service and asset management capabilities supporting the specific business challenges of complex asset Maintenance Repair and Overhaul (MRO).

iSAM products can be adopted individually to solve specific business challenges directly by enhancing and integrating with the SAP S/4HANA Enterprise Asset Management solutions. They can also be adopted as a suite of capabilities providing integrated maintenance processes. iSAM can also be adopted alongside the iMRO Digital Core to provide a comprehensive set of MRO capabilities.

iSAM Maintenance Operations Planning

iSAM Maintenance Operations Planning enables maintenance and production planners to visualize and update detailed work schedules for large complex maintenance events where project planning and maintenance objects are combined to define the maintenance event.

Large maintenance events such as facility shutdowns, turnarounds, and large complex maintenance packages on assets such as aircraft and complex components can span multiple weeks and include thousands of tasks. These types of events are often managed and scheduled using a combination of project planning and maintenance planning objects. The detailed planning and scheduling of these events are essential to ensure that they are delivered on time and on budget.



iSAM Maintenance Operations Planning displays **maintenance planning** events (revisions), network and network activities, sub-network data, and related work orders in a Gantt chart. Each Gantt chart is combined with an overview of the work center capacity utilization, enabling capacity overloads to be easily detected. It also displays detailed data, including critical planning alerts and object statuses. The required update and edit actions for resolving the planning alerts are provided directly within the application.

Benefits

A comprehensive suite of graphical planning tools

Large maintenance events need detailed planning and close monitoring to ensure that they are delivered on time and within cost limits. iSAM Maintenance Operations Planning provides a suite of planning Gantt charts and multiple update actions covering key maintenance planning objects.



Insight to action alerts

iSAM Maintenance Operations Planning enables maintenance planners to identify work center capacity overloads quickly. The **graphical planning tools** support drill-down and navigation to related apps to view details and take appropriate resolution actions.

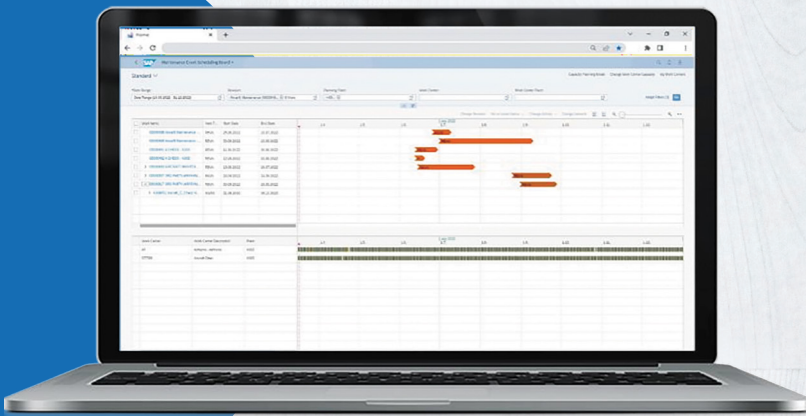
Full integration to related apps

iSAM Maintenance Operations Planning fully integrates with iSAM Maintenance Foundation and iSAM Maintenance Operations Insights via drill-down and inter-app navigation.

Features

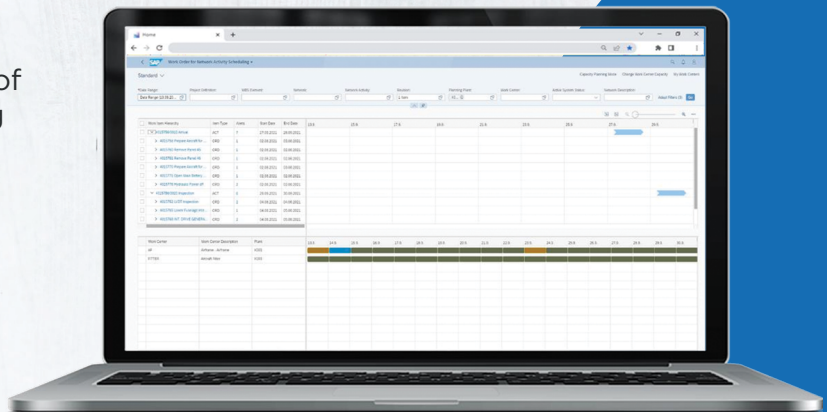
Review overall scheduling of maintenance events

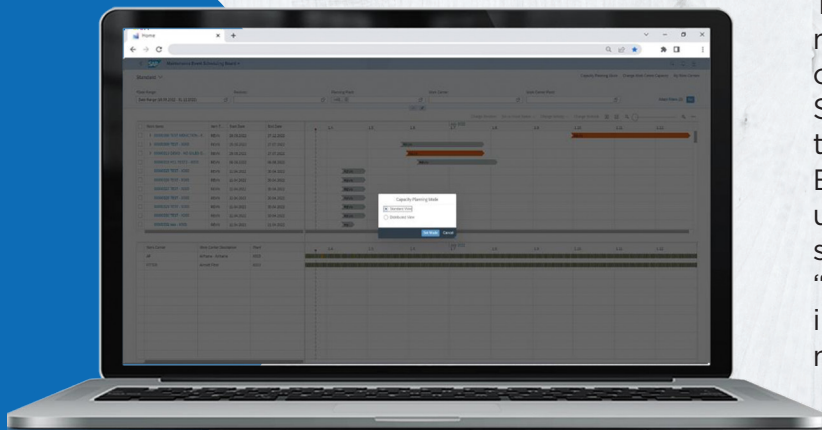
The **Maintenance Event Scheduling Board** app shows a high-level view of maintenance events (revisions) and related work items (network activities and work orders) in a Gantt chart. The lower part of the chart displays a capacity planning view for the user's work centers. Work items and capacities can be updated to avoid capacity overload.



Review detailed planning of a single maintenance event

The **Work Order Scheduling Board** app shows an overview of the network activities occurring in a single maintenance event (revision). The lower part of the chart displays a view of the capacity planning activities for the user's work centers. Work items and capacities can be updated to avoid capacity overload.





Two-load capacity models

There are two options for modeling capacity load on both the Maintenance Scheduling Board app and the Work Order Scheduling Board app. "Standard" mode uses work order operation scheduling parameters, whereas "Distributed" mode schedules in accordance with the superior network activity.

About HCL Technologies SAP Practice

To get the best return on your digital investments, you need a partner that doesn't just do SAP right, but does it better. Our SAP practice works seamlessly with HCL's digital consulting, engineering services, IoT WoRKS™, and cloud infrastructure practices to design, implement, and support tomorrow's integrated, intelligent solutions today. As an SAP Global Strategic Services Partner, our 10,000+ consultant base leverages insights, advanced accelerators, and industry-acclaimed frameworks to deliver award-winning services from local offices across Europe, Africa, Asia, and the Americas.

SAP, Done Better.

<https://www.hcltech.com/sap>



HCL



www.hcltech.com

HCL Technologies (HCL) empowers global enterprises with technology for the next decade today. HCL's Mode 1-2-3 strategy, through its deep-domain industry expertise, customer-centricity and entrepreneurial culture of ideapreneurship™ enables businesses to transform into next-gen enterprises.

HCL offers its services and products through three lines of business - IT and Business Services (ITBS), Engineering and R&D Services (ERS), and Products & Platforms (P&P). ITBS enables global enterprises to transform their businesses through offerings in areas of Applications, Infrastructure, Digital Process Operations, and next generation digital transformation solutions. ERS offers engineering services and solutions in all aspects of product development and platform engineering while under P&P. HCL provides modernized software products to global clients for their technology and industry specific requirements. Through its cutting-edge co-innovation labs, global delivery capabilities, and broad global network, HCL delivers holistic services in various industry verticals, categorized under Financial Services, Manufacturing, Technology & Services, Telecom & Media, Retail & CPG, Life Sciences, and Healthcare and Public Services.

As a leading global technology company, HCL takes pride in its diversity, social responsibility, sustainability, and education initiatives. As of 12 months ending on December 31, 2021, HCL has a consolidated revenue of US\$ 11.18 billion and its 197,777 ideapreneurs operate out of 52 countries. For more information, visit www.hcltech.com