

Sketch: A Data Ops driven configuration based development on Snowflake

Accelerating data handling and availability



1 The need for rapid data development and deployment framework



Rapid growth of diverse data in enterprises has created a need for ever increasing agile data management approaches. The traditional data warehouse model is inadequate to meet the demands of modern enterprises because it is typically time-consuming and cost-intensive to develop, maintain, deploy, and update. Rapid data development and deployment frameworks provide enterprises with a much more agile approach to their evolving data management needs.

2 Big data analytics



Big data analytics has become an important part of many business strategies. Businesses are looking for ways to gain insights into their customers' behaviors and preferences to deliver better products and services. A rapid development framework can help quickly deliver these insights so that businesses can take advantage of them faster.

3 Agile software development



Software developers need to be able to deliver new features faster than ever. This requires an agile approach to development that allows them to move quickly from one version of the software to another without spending time on maintenance or deployment activities.

4 Streamlining data and analytics architecture



The speed with which you can implement data-driven insights into your business processes can be the deciding factor between success and failure— Old frameworks could take weeks or months to deploy, which is far too long in the current competitive landscape.

The data landscape is becoming more complex with every passing day. The proliferation of new data sources and formats has increased exponentially, and organizations find it difficult to streamline the data architecture to seamlessly derive insights from new data sources, thereby unable to take advantage of all the available data. Sketch enables seamless consolidation of data across multiple data sources simplifying data landscape and increasing efficiency. This also enables automated real-time data ingestion capability to drive analytics.



Introducing HCL's Sketch, an end-to-end data pipeline



HCL's Sketch framework has readily available data pipelines to address most of the above-mentioned processing requirements. In addition, Sketch data pipelines have an in-built error and audit capture mechanism to trace sequences or errors as needed. Besides the functional goal, each pipeline is tuned to address high-performance requirements by inherently implementing a parallel processing paradigm.

Empowering organizations to implement ETL flows in the most effective, efficient, and rapid manner. Sketch provides a rapid "data pipeline" development and deployment framework to accelerate data availability and accessibility. This helps to reduce time to market, thereby reducing cost and increasing the ROI of digital transformation investment.

Sketch rapid data pipeline



01

Establish a next-gen integrated data lake for accelerated data ingestion, harmonization, and enable visualization of the raw data on a centralized data platform



02

The transformation library consists of reusable data transformation functions



03

Data catalog provides business users homogeneous access to data sets

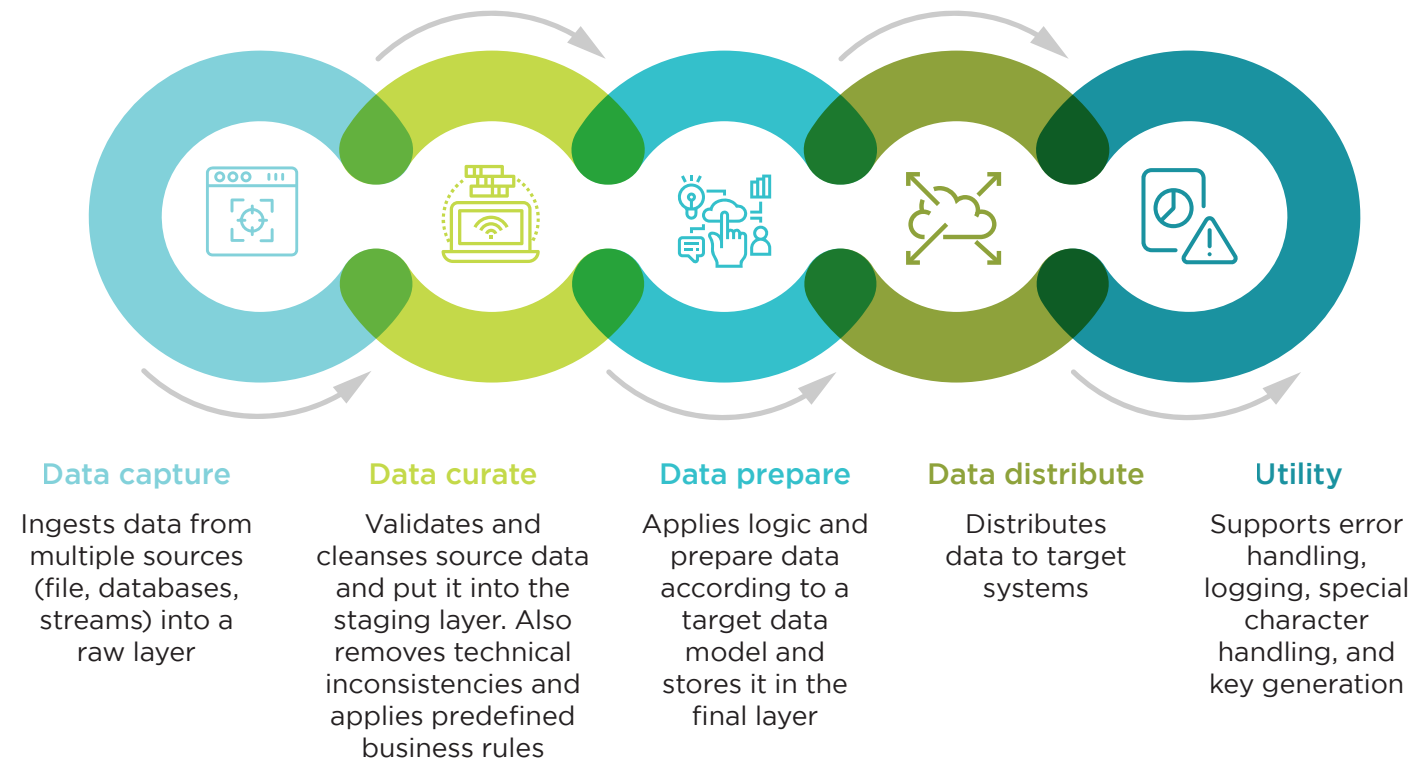


04

Sandbox environments enable data discovery and advanced preliminary analytics

Business-driven decisions

HCLTech's Sketch framework solution for data integration to manage digital data from multiple sources, including websites, mobile applications, and business applications. Our solution has been deployed across multiple client's landscape and has successfully integrated various data sources, Digital Asset Management Systems (DAM), digital stores, and other third-party datasets. Here are the key features of this solution offering:



Sketch framework features

Features



Results and benefits



HCL Technologies (HCL) empowers global enterprises with technology for the next decade today. HCL's Mode 1-2-3 strategy, through its deep-domain industry expertise, customer-centricity and entrepreneurial culture of ideapreneurship™ enables businesses to transform into next-gen enterprises.

HCL offers its services and products through three lines of business - IT and Business Services (ITBS), Engineering and R&D Services (ERS), and Products & Platforms (P&P). ITBS enables global enterprises to transform their businesses through offerings in areas of Applications, Infrastructure, Digital Process Operations, and next generation digital transformation solutions. ERS offers engineering services and solutions in all aspects of product development and platform engineering while under P&P. HCL provides modernized software products to global clients for their technology and industry specific requirements. Through its cutting-edge co-innovation labs, global delivery capabilities, and broad global network, HCL delivers holistic services in various industry verticals, categorized under Financial Services, Manufacturing, Technology & Services, Telecom & Media, Retail & CPG, Life Sciences, and Healthcare and Public Services.

As a leading global technology company, HCL takes pride in its diversity, social responsibility, sustainability, and education initiatives. As of 12 months ending on March 31, 2022, HCL has a consolidated revenue of US \$11.48 billion and its 209,000 ideapreneurs operate out of 52 countries. For more information, visit www.hcltech.com



www.hcltech.com