

Data-driven business transformation through Business Process Intelligence (BPI)



Unleash the power in your process data to transform your business

Business challenges keep evolving. Business processes need to evolve, too. Redesign your real business processes with Signavio BPI for a data-driven business transformation.

Take the uncertainty out of business process redesign

You understand the unprecedented pace and complexity of change needed to stay relevant in today's market.

You also understand that by redesigning business processes, you can achieve remarkable improvements in cost, quality, speed, profitability, resource utilization, and other vital areas.

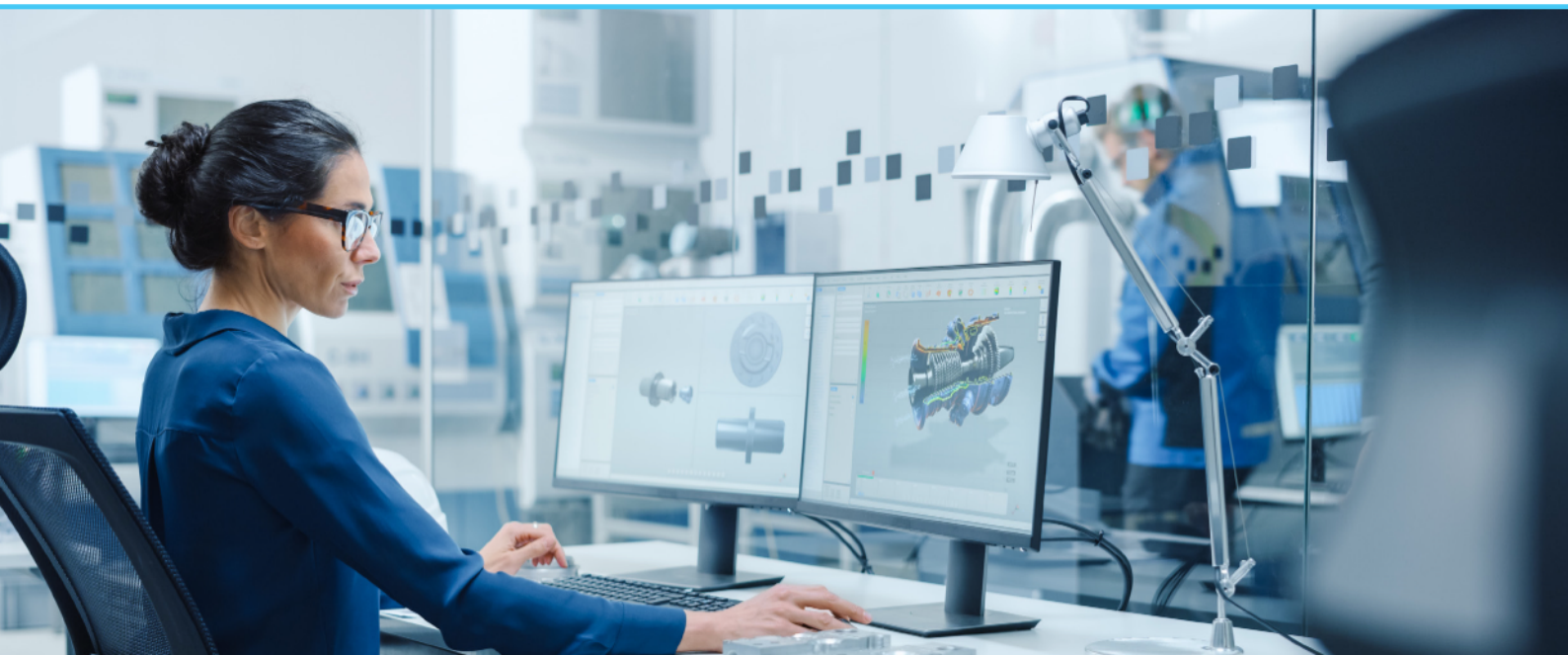
Yet, you are uncertain about what needs to change, how much, and when.

Realize data-driven business transformation with HCLTech's SAP Signavio BPI offerings

Let HCLTech's Signavio BPI team help you reveal the real business processes to assess your starting point, process destination, and journey.

With this approach, you will be able to:

- Identify and resolve real business problems and not the assumed ones
- Evaluate multiple resolution paths to find the best solution for your business
- Democratize your processes with a centralized process management system accessible to everyone

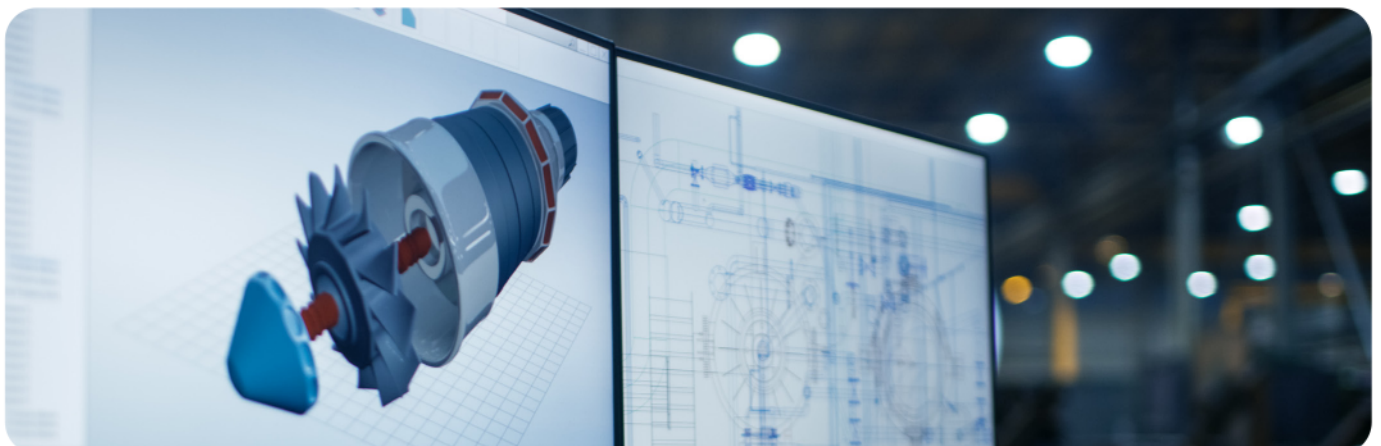


Get visibility into real process execution, highlighting existing inefficiencies and problems

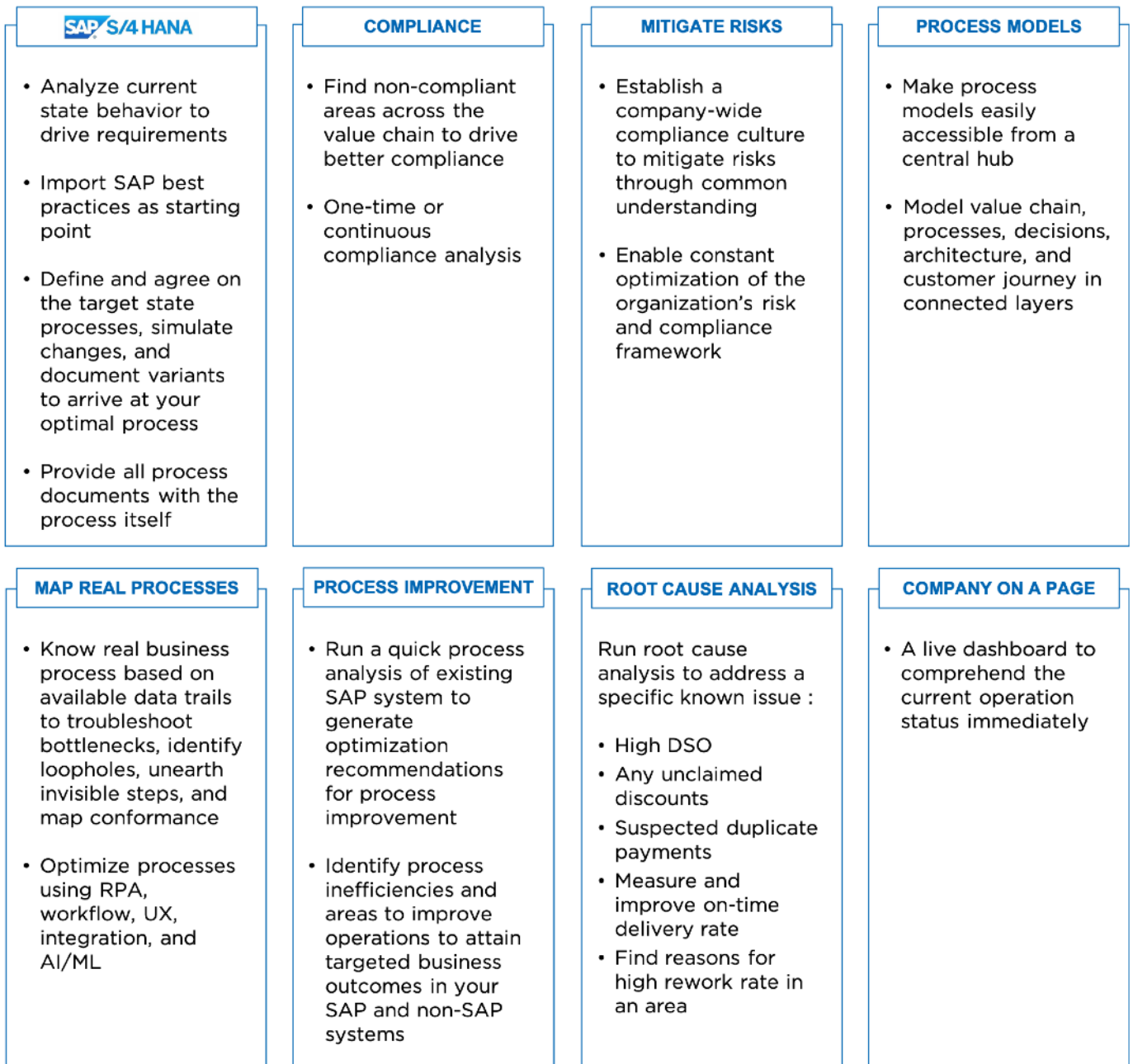
HCLTech has created four implementation packages mapped to familiar business challenges. RISE with SAP customers already have the starter licenses for some of these implementation packages, as noted below.

These packages can be mixed and matched to address your specific business challenges.

1 Analyze	2 Mine	3 Model	4 View
Start here: <ul style="list-style-type: none">Analyze your SAP systems to identify pain points and SAP recommended resolutionsSee how your processes compare with industry peersAssess your organization's process maturity	Go further: <ul style="list-style-type: none">Pick an area of core concern and dig deeper with process mining (SAP or Non-SAP)See actual business process, troubleshoot bottlenecks, identify loopholes, unearth invisible steps, map conformance	Make processes accessible: <ul style="list-style-type: none">Set up process modelling repository and dictionaryDevelop process modelsSimulate process flows to design optimal resourcesCompare as-is processes with industry best practices to find improvement areas	Make processes visible: <ul style="list-style-type: none">Set-up continuous process evaluation and BPI dashboard for company-on-a-page viewIdentify problems as they develop and resolve them proactively
			



Our four implementation packages are mapped to eight familiar business challenges, providing a clear, seamless process to identify and address specific challenges.



Run processes better

The benefit of data-driven business transformation through BPI is simple- your processes will run better. The benefits of our approach include:

- Identifying challenges in your critical business process, rapidly simulating several hypotheses to reveal the optimal solution. This allows us to implement the best version of your processes.
- Let your processes be the carrier. Drive better compliance with embedded SOPs, training documentation, business blueprint documents, and RACI matrix with the processes.
- Using real process data, identify and address process bottlenecks.

- Benchmark against industry-standard business processes and understand your process's maturity. Know how you compare with the competition and what should change.
- Several business process variants can run undetected and sometimes go through ghost steps that remain unknown to the business. Understand and manage business process variants.
- Historically, 50% of automation projects fail due to the automation of incorrect processes. Find the right processes to automate, quantify the value of automation before starting the project, and reduce costs with automation.
- Find and reduce business process waste.



**Want to learn more?
Contact us at sap@hcl.com**

About HCLTech's SAP Practice

To get the best return on your digital investments, you need a partner that doesn't just do SAP right, but does it better. Our SAP practice works seamlessly with HCLTech's digital consulting, engineering services, IoT WoRKS™, and cloud infrastructure practices to design, implement, and support tomorrow's integrated, intelligent solutions today. As an SAP Global Strategic Services Partner, our 10,000+ consultant base leverages insights, advanced accelerators, and industry-acclaimed frameworks to deliver award-winning services from local offices across Europe, Africa, Asia, and the Americas.

SAP, Done Better.

<https://www.hcltech.com/sap>

HCLTech | Supercharging Progress™

BI-104223A11856163-EN00GL

HCLTech is a global technology company, home to 219,000+ people across 54 countries, delivering industry-leading capabilities centered around digital, engineering and cloud, powered by a broad portfolio of technology services and products. We work with clients across all major verticals, providing industry solutions for Financial Services, Manufacturing, Life Sciences and Healthcare, Technology and Services, Telecom and Media, Retail and CPG, and Public Services. Consolidated revenues as of 12 months ending September 2022 totaled \$12.1 billion. To learn how we can supercharge progress for you, visit hcltech.com.

hcltech.com

