

Accelerate your  
cloud journey with  
**Skytap** on Azure



Business agility is critical for modern-day enterprises. Yet, due to legacy infrastructure, enterprises running traditional workloads often need to deal with challenges such as time to scale, high capex and security concerns. Transitioning to cloud wherever necessary, has thus become a business priority now, and more and more organizations are taking the plunge.

**Gartner predicts that by 2025, 80 percent of enterprises will shut down their traditional data centers.** Cloud migration, therefore, is the way forward for many workloads but it also involves considerations like time, cost, operational sustainability and data security to ensure that desired objectives are achieved in the stipulated timeframe.

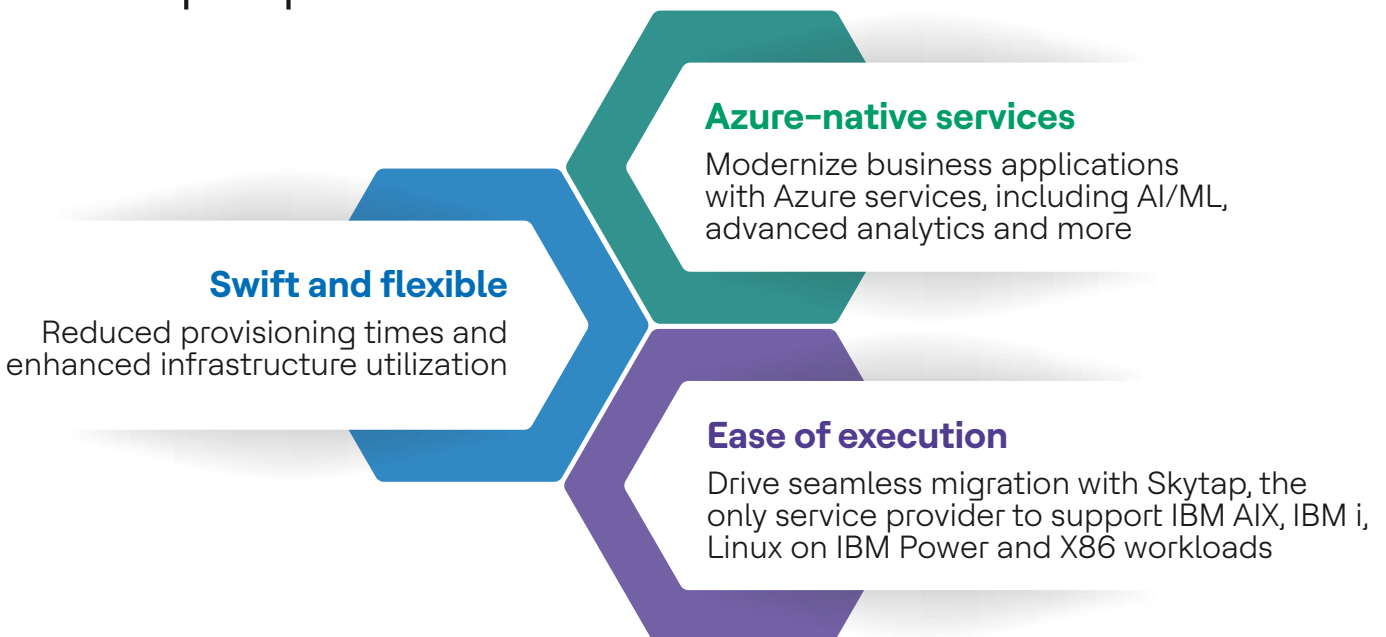


# Skytap on Azure

HCLTech's Skytap on Azure services enable traditional workloads to run seamlessly on Azure, providing a resilient, faster and affordable way for enterprise cloud transformation journey.

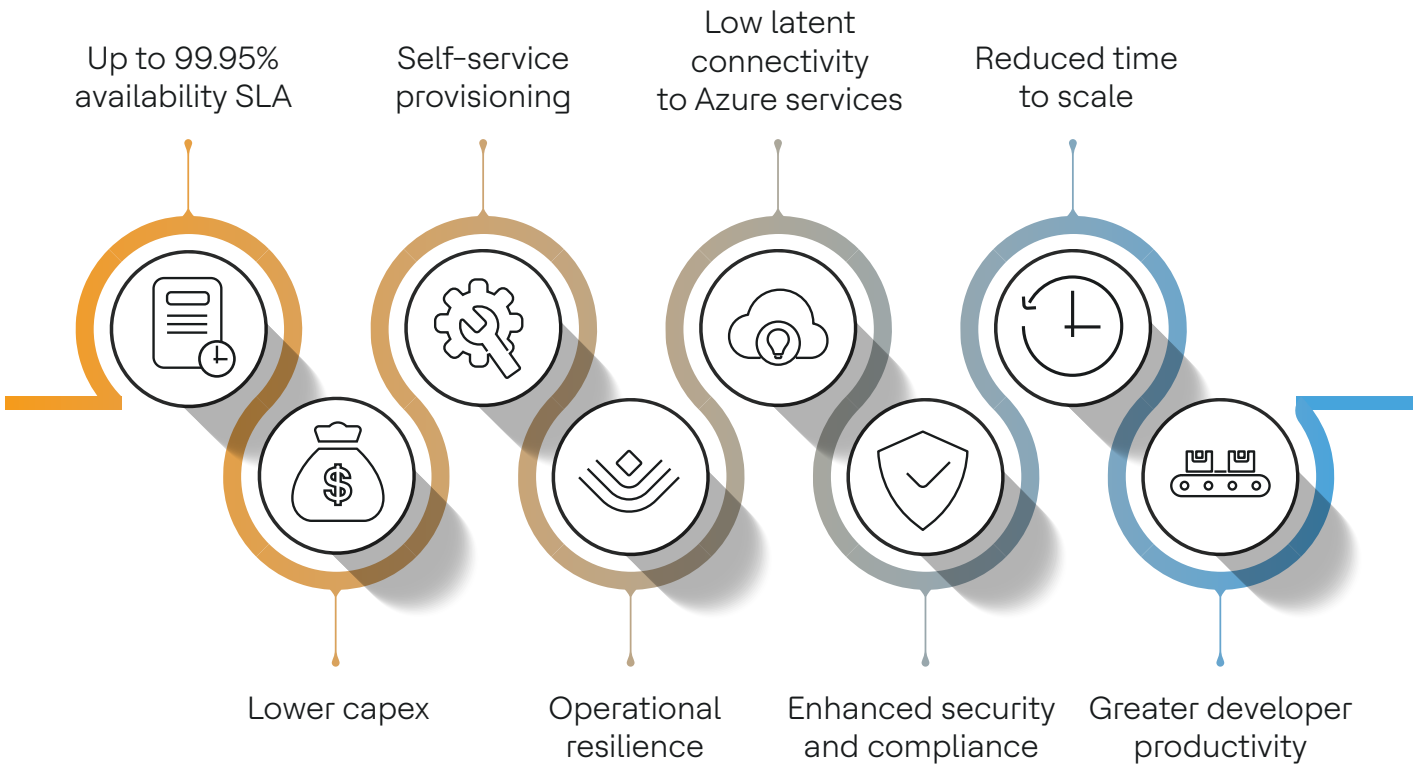
Skytap on Azure helps organizations to reap the benefits of cloud with an optimized effort. This service includes a cloud-based solution that executes IBM i, IBM AIX, Linux on IBM Power and x86 workloads natively in Azure, without the need for refactoring, rewriting and re-architecting mission-critical workloads. Customers can now seamlessly run, move, secure and develop business applications, leveraging HCLTech's extensive IBM Power and Azure experience combined for this offering.

## Value proposition

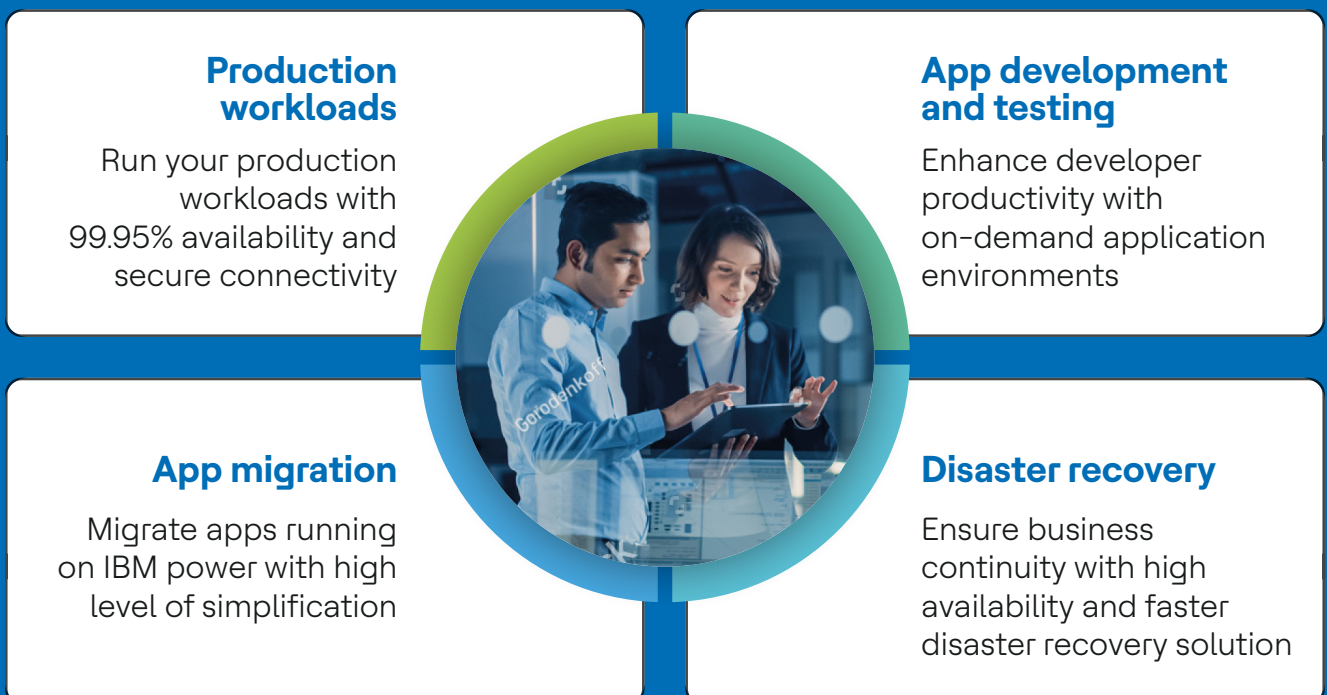


**HCLTech services:** Our extensive IBM and Azure experience spanning decades enables us to provide global skills, services and offerings for a successful cloud journey.

# Key benefits



# Use cases



# HCLTech differentiators

- ◆ Leader in all analyst reports for cloud (IDC, Everest Group, ISG, Avasant and Gartner)
- ◆ Microsoft Cloud Adoption Framework (CAF) enterprise-scale certified partner
- ◆ One of the first global SIs to attain the Solutions Partner designation in the Microsoft Cloud Partner program
- ◆ Extensive pool of Azure-certified professionals and trained resources across Microsoft & IBM technologies



## Partners



For more information, write to us at [contact.hyc@hcl.com](mailto:contact.hyc@hcl.com)

# HCLTech | Supercharging Progress™

HCLTech is a global technology company, home to 222,000+ people across 60 countries, delivering industry-leading capabilities centered around digital, engineering and cloud, powered by a broad portfolio of technology services and products. We work with clients across all major verticals, providing industry solutions for Financial Services, Manufacturing, Life Sciences and Healthcare, Technology and Services, Telecom and Media, Retail and CPG, and Public Services. Consolidated revenues as of 12 months ending December 2022 totaled \$12.3 billion. To learn how we can supercharge progress for you, visit [hcltech.com](https://hcltech.com).

[hcltech.com](https://hcltech.com)

