

**HCLTech | FORTINET**

# Simplifying Security and Connectivity with SASE



# Overview

The growing shift to hybrid work environments and increasingly distributed IT landscapes presents new challenges for organizations worldwide. Security architectures originally designed for single-location networks struggle to accommodate the modern demands of seamless connectivity and robust protection across distributed and hybrid ecosystems. To address these challenges, HCLTech and Fortinet have partnered to deliver a joint Secure Access Service Edge (SASE) offering.

Our solution combines Fortinet's advanced SASE technology with HCLTech's comprehensive managed services to help organizations achieve scalable, secure and efficient connectivity. With secure service edge (SSE) capabilities, including zero-trust network access (ZTNA), secure web gateway (SWG), cloud access security broker (CASB) and firewall-as-a-Service (FWaaS), along with integration with software-defined WAN (SD-WAN) and advanced Fortinet tools, this offering provides best-in-class security across distributed networks. We help customers navigate the complexities of hybrid work environments without sacrificing performance, productivity, or security and stay ahead in today's rapidly evolving digital landscape.



# Challenges

## Security gaps and fragmentation

Traditional security architecture often necessitates on-prem solutions at branch locations, including firewalls, virtual private networks (VPNs) and proxies. This complexity leads to gaps in security and increases operating costs. Organizations struggle to deploy true software-defined perimeters (SDPs) due to the fragmented nature of their IT infrastructures.

## Poor user experience

As hybrid work environments become the norm, legacy systems that were not designed for dispersed workforces hinder productivity. A lack of unified access control, inefficient connectivity to applications and inconsistent security postures all negatively impact the user experience.

## Complexity and cost of operations

With diverse IT landscapes, businesses often deploy multiple point solutions to address various security needs. These ad-hoc measures result in increased CAPEX, difficulties with system integration and high operational overhead.

## Adoption of SD-WAN

SD-WAN improves the quality of service (QoS) and increases site capacity. However, most SD-WAN solutions do not natively incorporate security, creating potential gaps in protection.



# Our solution

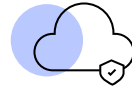
The HCLTech and Fortinet joint solution leverages Fortinet's advanced security tools alongside HCLTech's 360-degree managed services. Together, we deliver scalable and robust network security, powered by zero-trust principles. The key components of our solution are as follows:



**ZTNA:** Ensures secure application access based on user identity, device, and context



**SWG:** Provides centralized web protection by monitoring and filtering internet traffic for users on and off the network



**CASB:** Manages and secures data across cloud services and SaaS applications.



**FWaaS:** Offers robust perimeter security without relying on traditional on-prem firewalls



**Data loss prevention (DLP):** Helps safeguard sensitive corporate assets and prevents inadvertent data breaches

## Additional functionality

- Multimode DNS, sandboxing, VPN-as-a-Service, FortiGuard malware protection and remote browser isolation provide deeper layers of security.
- Integration of threat intelligence through Fortinet's advanced threat monitoring capabilities ensures proactive identification and mitigation of risks.
- Digital experience management capability provides end-to-end visibility from the endpoint to the major SaaS applications and helps to pinpoint issues.
- Tightly integrated secure SD-WAN eliminates security gaps and optimizes the hybrid workforce.

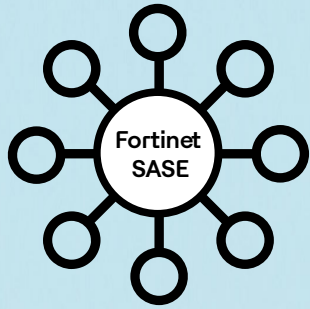
## HCLTech's expertise and services

- **Advisory services:** Mapping the current state of your security and network posture to develop a tailored SASE transformation roadmap
- **Integration services:** Seamless deployment of zero-trust principles and incorporation with identity and access management (IAM) platforms
- **Managed services:** Continuous management, monitoring and optimization of security policies for evolving needs
- Dedicated support and expertise through **400+ trained SMEs** on Fortinet's platform and **20,000+** managed Fortinet devices under HCLTech's care.



## Unified architecture

Our joint solution consolidates myriad security tools into a single subscription model. It enables smooth integration across various platforms, including third-party services, while delivering a unified threat management system.



Secure Web Gateway (SWG)



Cloud Access Security Broker (CASB) and DLP



Zero Trust NetworkAccess (ZTA)



Firewall as a Service (FWaaS) and IPS

Fortinet FortiSASE delivers a complete SASE solution in a single subscription



DNS Security



Multimode DLP



Advanced Malware protection



Sandbox



FortiGuard Threat Intelligence



VPN as a Service



Digital Experience Monitoring



Remote Browser Isolation

### Advisory Services (Strategy and Architecture)

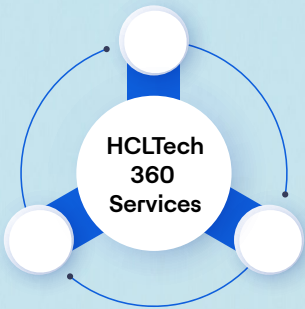
- As-is state analysis of existing security and network posture.
- Risk prioritized SSE roadmap
- Design SSE Adoption roadmap, including timelines

### Transformation and Integration

- Zero Trust
- SASE-SD-WAN integration
- IAM-SASE integration
- TDR Integration
- Policy Consolidation
- SASE Onboarding

### Managed Services

- SASE platform management
- Policies management
- 24X7 monitoring and threat detection
- Incident response and mitigation



## Benefits delivered

**1 Stronger, simpler security:** By combining Fortinet's advanced technology with HCLTech's service expertise, businesses gain access to comprehensive security features that eliminate tool overlaps and improve the overall threat management framework. Simplified management through unified policies reduces complexity while enhancing security performance.

**2 Cost efficiency:** Our joint solution reduces capital expenditure (CAPEX) and operational expenditure (OPEX) by replacing fragmented point solutions with a unified and scalable model. Automation in policy management further reduces overhead costs associated with manual tasks.

**3 Enhanced connectivity and productivity:** By implementing zero-trust principles and integrating with SD-WAN, businesses experience seamless connectivity between branch locations, remote users and cloud services. Improved user experience leads to enhanced productivity and operational efficiency for hybrid workforces.

**4 Proactive threat mitigation:** Advanced features, such as malware protection, sandboxing and digital threat intelligence, enable the proactive identification of potential risks. Continuous monitoring enables organizations to stay ahead of emerging threats, thereby protecting against data breaches and downtime.

**5 Scalable and future-ready:** HCLTech's expertise in consulting, transformation and managed services ensures the solution is tailored for scalability. As businesses grow or adapt to new needs, our solution evolves in tandem with them, providing robust security and performance for years to come.

**6 Seamless integration:** Our solution's architecture accommodates third-party services, including integrations with IAM platforms, ensuring compatibility across diverse IT environments. Secure integration enables unified visibility and control, reducing risks even in complex setups.

[Learn more](#) about the HCLTech and Fortinet Partnership.

**HCLTech** | Supercharging  
Progress™

[hcltech.com](https://hcltech.com)