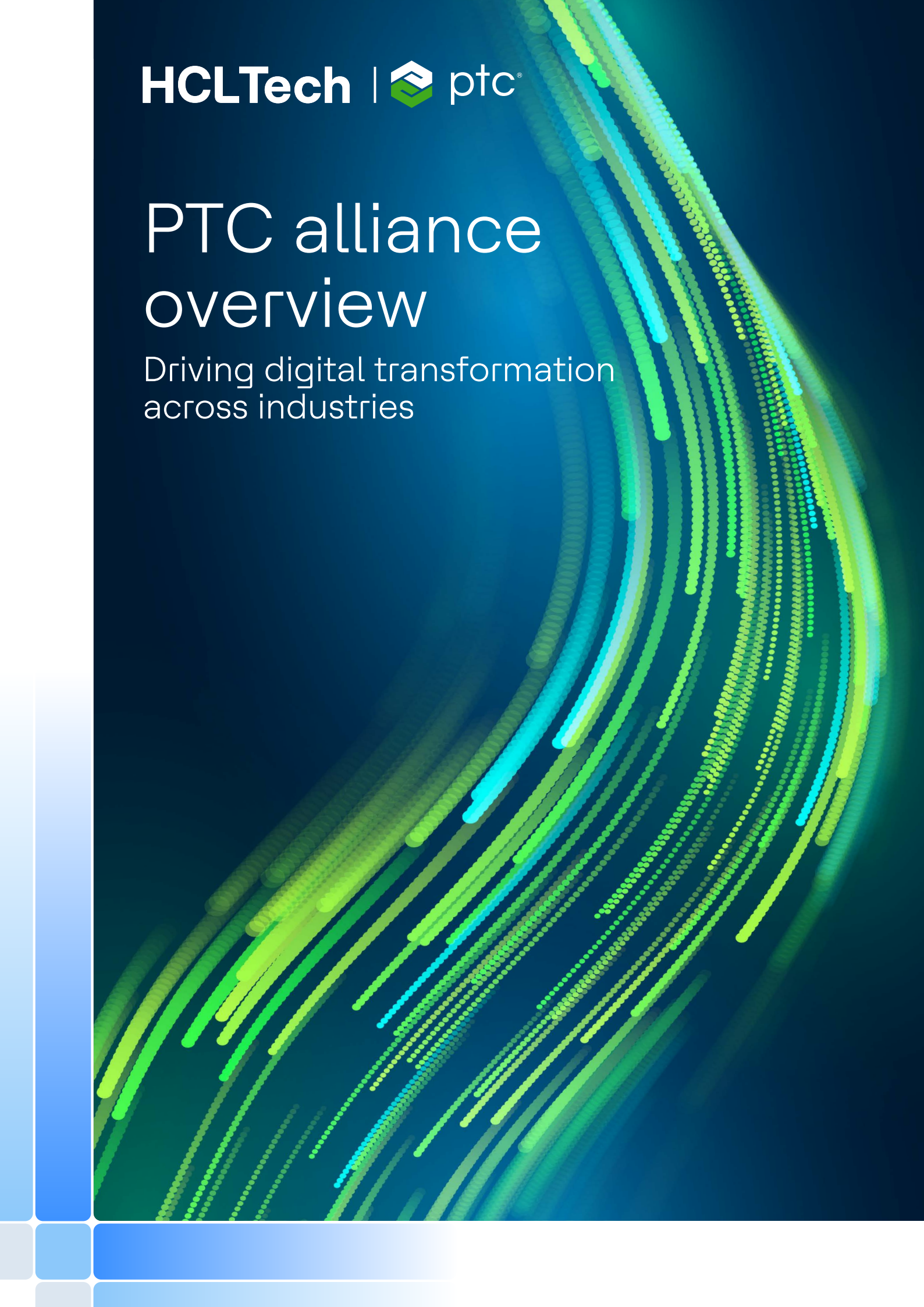


PTC alliance overview

Driving digital transformation
across industries



Co-Creating Digital Transformation Success

HCLTech is a trusted global consulting and systems integration partner to PTC, with over 20 years of collaboration in engineering and product development. Our alliance spans CAD PLM, ALM, SLM, MBSE and cloud technologies, enabling us to deliver end-to-end solutions that accelerate innovation, enhance product quality and drive operational excellence to enterprises worldwide.



450+ SMEs

on PTC technologies



300+ PLM experts

230+ ALM consultants



Global delivery

across the Americas, Nordics, APAC



GSI Platinum Partner

status with PTC

Our partnership

HCLTech and PTC share a strategic, long-standing global partnership as a Platinum Global System Integrator, delivering enterprise-scale digital engineering transformations globally.

For over 20 years, we have helped global organizations modernize their engineering ecosystems by connecting product design, software development, manufacturing, and service into a unified digital thread. HCLTech brings deep engineering and industry expertise across Computer-aided Design (CAD), Product Lifecycle Management (PLM), Application Lifecycle Management (ALM), Service Lifecycle Management (SLM), Digital Manufacturing and Model-Based Systems Engineering (MBSE) – enabling enterprises to accelerate innovation, improve quality, and reduce time-to-market.

Together, we help customers transition to a connected, intelligent Model-Based Enterprise through seamless ALM-PLM-SLM convergence, integrated workflows and AI-enabled automation. Our proprietary accelerators and integration frameworks enhance interoperability across enterprise systems while driving measurable business outcomes.

- **20+ Years of Proven Global Partnership**
Trusted by Fortune 500 enterprises to deliver scalable, secure and future-ready digital engineering transformations.

- **End-to-End Digital Thread Expertise**
Seamless integration across design, software, manufacturing, quality and service, enabling real-time collaboration, traceability and closed-loop lifecycle management.

- **Comprehensive Engineering Coverage**
 - CAD & Digital Product Engineering
 - PLM
 - ALM
 - SLM
 - Digital Manufacturing
 - Smart Factory Enablement
 - MBSE
 - Integrated Product Engineering

- **Industry-Focused Transformation Leadership**
 - Automotive: Software-defined vehicles, EV platforms, functional safety, ASPICE (Automotive Software Process Improvement and Capability Determination)
 - Life Sciences: Regulatory-ready development, design controls, end-to-end traceability
 - Aerospace & Defense: Complex systems engineering, certification readiness, configuration excellence
 - HighTech: Hardware-software convergence, connected products, smart manufacturing
 - Semiconductor industry: Accelerators such as Semicon template

- **Outcome-Driven Transformation**
Improved product quality, faster innovation cycles, enhanced compliance, operational efficiency and measurable ROI

Our service offerings

Our comprehensive suite of services is designed to empower your organization to maximize the value of your technology investments. From strategic guidance to ongoing support, we provide end-to-end solutions tailored to your unique needs.

Consult and Strategize



Address critical business challenges with tailored consulting solutions. Our consulting experts work closely with our clients to understand their goals, assess current maturity and develop actionable strategies that drive tangible, long-term results.

Implement and Integrate



Our implementation and integration services ensure solutions are architected to your specific requirements and deployed to seamlessly align with your business processes. We design scalable solution architectures and integrate systems to create unified, high performing engineering and digital environments.

Migrate, Modernize and Transform

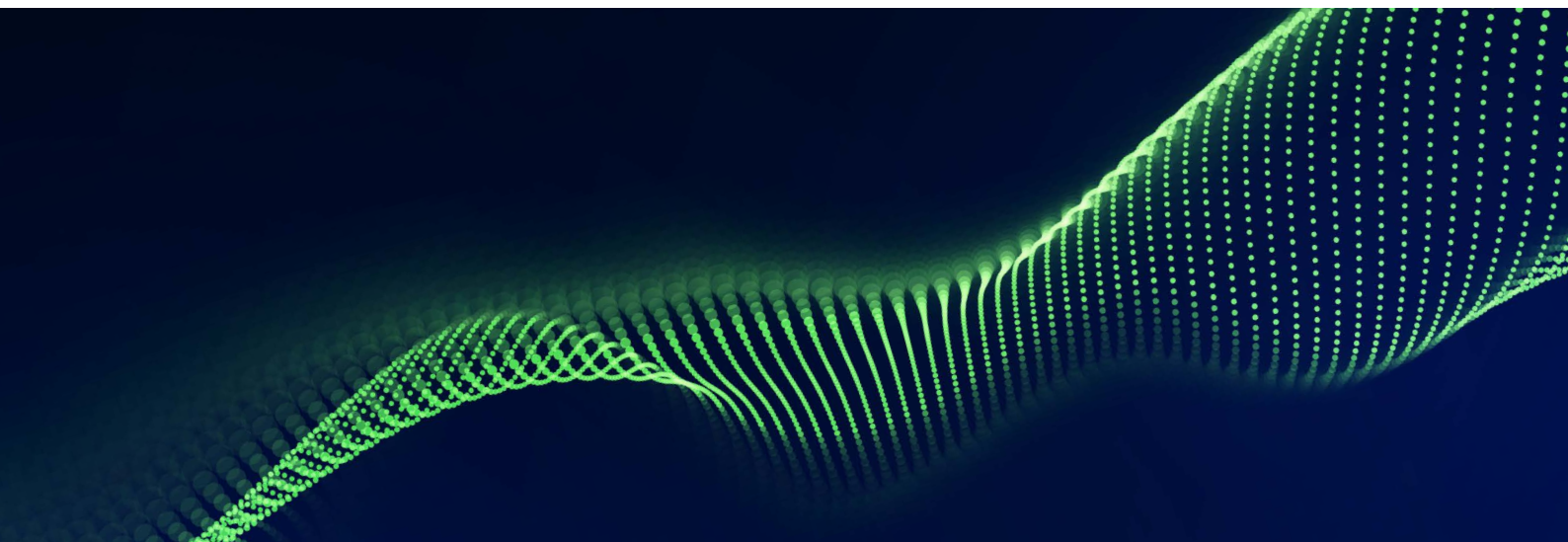


Enable seamless transition from legacy and fragmented engineering systems to modern PTC platforms with minimal business disruption. We ensure a smooth, low-risk transition, minimizing risk and maximizing Investment (ROI).

Application support and continuous improvement



Ensure the reliability, stability and performance of your critical applications with our comprehensive support services. We deliver timely resolution, continuous optimization and proactive maintenance to keep your operations running smoothly.



Technology platforms supported



HCLTech solution suite

SwiftX

SwiftX is an advanced solution designed to streamline and accelerate ALM platform migrations. Supporting all four major ALM platforms, it leverages standardized, templated migration mapping profiles within a cloud-enabled, layered architecture. By automating key migration steps, SwiftX reduces manual effort by up to 60% and compresses project timelines by 50%, making it a highly efficient tool for large-scale migrations that involve complex, large-scale ALM transitions.

XLM.AI

XLM.AI brings the power of GenAI to enhance requirements engineering. It automates requirements creation, delivers real-time quality analysis aligned to INCOSE guidelines and provides AI-powered analytics that enhance decision-making. Collectively, these capabilities reduce authoring time by 50%, lowers costs by 20% and improved requirement consistency by 70% across projects and teams – driving higher energy excellence and traceability.

Process Automation Kit for ALM (PAK)

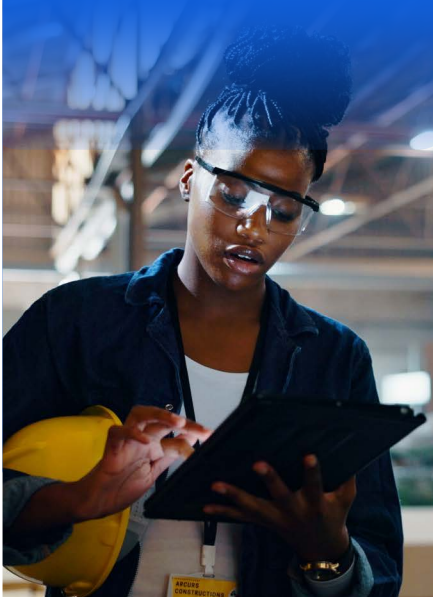
PAK is a robust Java-based SDK designed to accelerate the development of modular workflows and automation commands. It streamlines repetitive tasks, reduces engineering complexity and costs and boosts overall quality and traceability. With extensive connector support, PAK facilitates seamless data integration, migration and synchronization across diverse tools – ensuring interoperability and operational efficiency.

AI Agentforce

AI Agentforce encompassed six functional areas: customer service, self-service and communities, digital and channels, AI (Einstein), field services and integration. Each pillar is equipped with advanced capabilities – intelligent case management, branded community portals, omnichannel support, predictive AI models, streamlined field service scheduling and seamless third-party app integration. Together, these capabilities enable personalized customer journeys, real-time support responsiveness and scalable end-to-end service delivery.

Success stories

From separation to scalability: Building a future-ready Digital Thread



Objective

As an independent organization, the client set out to establish a modern, scalable digital backbone. The objective was to implement a unified Windchill-based Digital Thread, integrate 30+ enterprise systems, migrate legacy data and enable end-to-end lifecycle traceability to strengthen governance, accelerate engineering workflows and support long-term growth.

Solution

We implemented a consulting-led Windchill PLM solution to unify legacy environments into a single One PLM platform. Using accelerators and prebuilt integrations, the solution enabled 30+ system connections, embedded QMS workflows and rapid data migration, creating a governed and scalable digital thread.

Impact delivered

- 40% reduction in data migration effort and 50% faster delivery
- 20–30% effort savings through templates and minimal customization
- 30+ systems integrated with governed BOM, change and compliance processes
- Embedded QMS improving audit readiness and issue resolution
- Scalable One PLM foundation supporting future growth

Digitizing industrial operations for future-ready connected global manufacturing



Objective

Our client aimed to modernize global manufacturing by implementing a unified IIoT ecosystem. The goal was to deliver real-time visibility, automate operations and improve asset performance through a scalable, Industry 4.0-ready digital foundation.

Solution

We deployed a scalable IIoT solution on PTC ThingWorx®, using its “Plant in a Box” framework for rapid multi-site rollout. The platform unified systems, digitized processes and enabled real-time insights, with seamless integration across Kepware, MQTT, SAP and Snowflake.

Impact delivered

- Up to 15% faster anomaly response and 8% less unplanned downtime
- 90%+ reduction in manual monitoring and 100% user satisfaction improvement
- ~\$63K annual savings from automation and data efficiency
- Up to 30% faster deployments with a standardized IIoT model

Success stories

Accelerating digital engineering across electrified, connected vehicle platforms



Objective

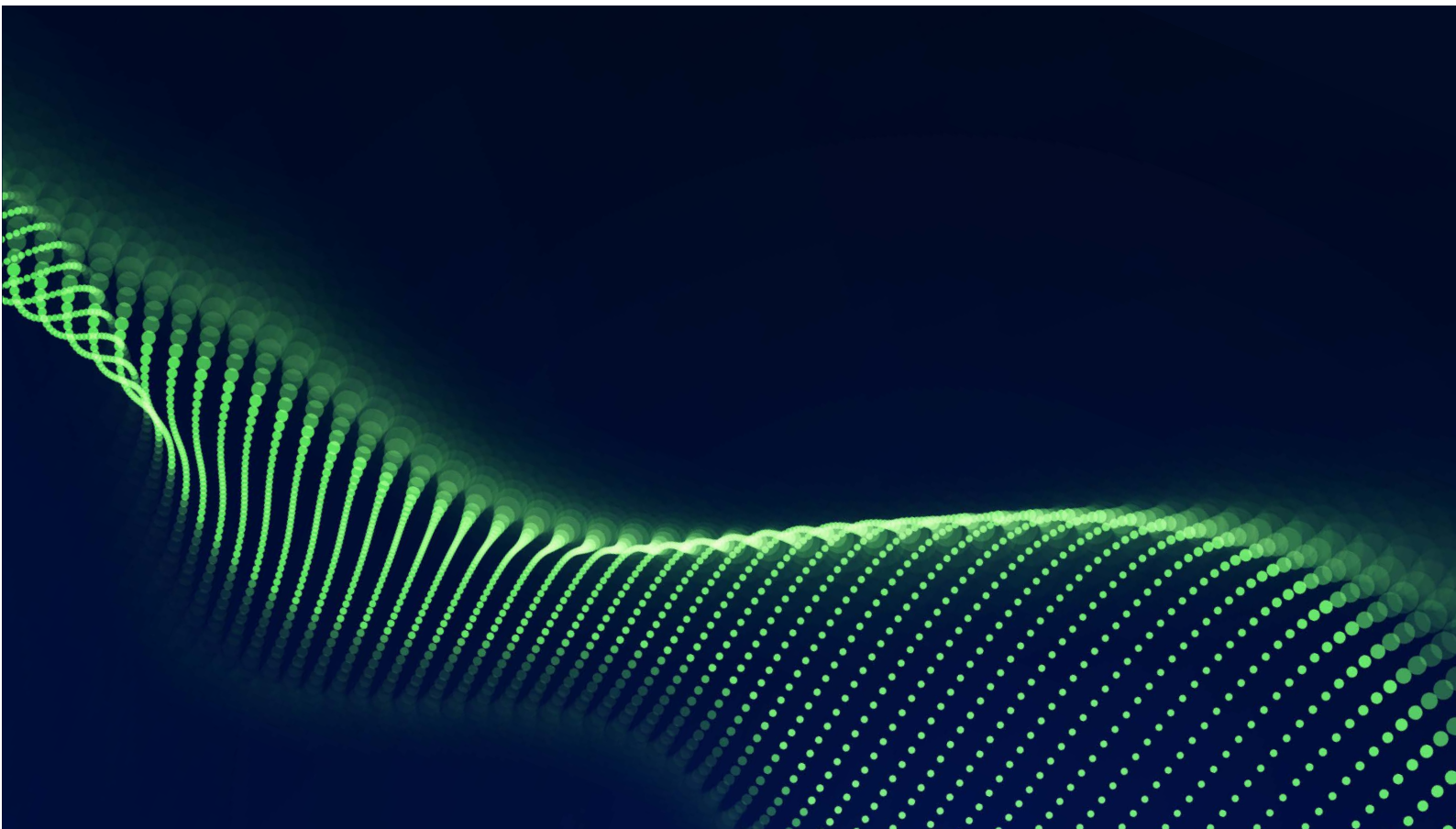
Our client set out to modernize and standardize its product development ecosystem to support complex, electrified and software-driven platforms. The goal was to establish a unified, scalable engineering framework with end-to-end traceability across ALM, PLM and MBSE to improve alignment, speed and governance.

Solution

We implemented an integrated ALM–PLM–MBSE ecosystem enabling end-to-end traceability and seamless information flow. By integrating Windchill RV&S, Modeler and Codebeamer and leveraging accelerators, standardized KPIs and dashboards, the solution established a consistent digital thread that improves collaboration, governance and development efficiency worldwide.

Impact delivered

- 100% traceability from requirements to release across ALM–PLM–MBSE
- 200+ users enabled with standardized global workflows
- 80% reduction in manual reporting through automation
- 5+ dashboards improving visibility and decisions
- 120+ MBSE engineers supported via integrated workflows



HCLTech | Supercharging Progress™

HCLTech is a global technology company, home to more than 226,600 people across 60 countries, delivering industry-leading capabilities centered around AI, digital, engineering, cloud and software, powered by a broad portfolio of technology services and products. We work with clients across all major verticals, providing industry solutions for Financial Services, Manufacturing, Life Sciences and Healthcare, High Tech, Semiconductor, Telecom and Media, Retail and CPG, Mobility and Public Services. Consolidated revenues as of 12 months ending December 2025 totaled \$14.5 billion. To learn how we can supercharge progress for you, visit hcltech.com.

hcltech.com

