

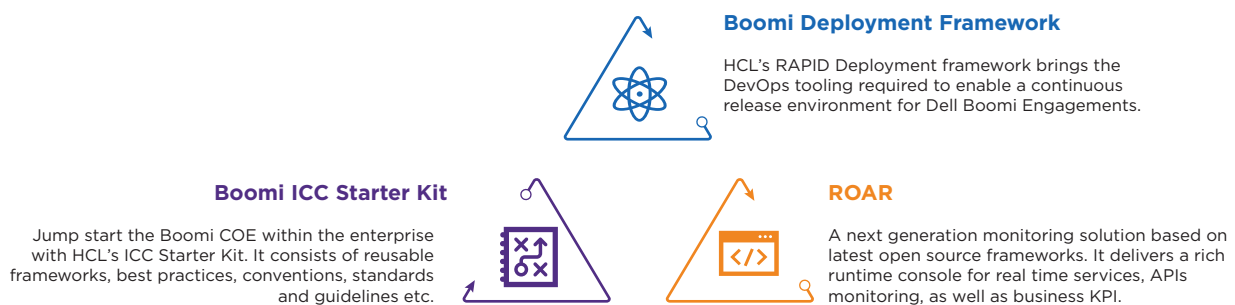
ADvantage™ Boomi

Supercharged digital transformation
with amplified Boomi implementations



In the digital economy, every business is viewed as a technology company for whom the time-to-market is a key differentiator. To aid enterprises in achieving its targets related to customer experience and operational excellence, application Integration has never been more critical to an organization's IT environment. Many enterprises invested in Integration platforms lack a comprehensive strategy that puts business priorities at the heart of your approach to foundational technologies.

ADvantage™ Boomi is HCL's way to ensure productivity and inclusiveness in Dell Boomi engagements of varied dimensions, in fulfilling the exigencies & maintaining a coherence in terms of customer experience & operational agility, while realizing the overall digital transformation vision. **ADvantage™ Boomi** accrues best practices from HCL's past project experiences, that are essential for building an ecosystem of frameworks & accelerators, which can augment & catalyze the Boomi Integration project execution. It enables key Integration platforms technology decisions related to DevOps, monitoring, standardized frameworks and other aspects of an integration platform that ultimately simplifies your integration ecosystem and accelerates integration solutions delivery



Boomi Deployment Framework

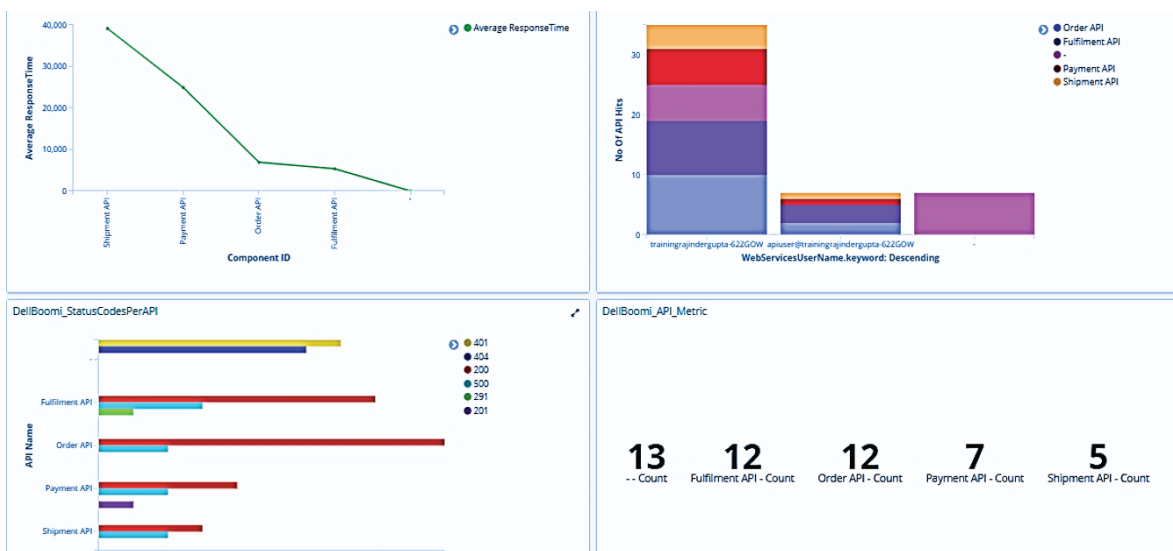
Agile projects require well-orchestrated engineering automation to support rapid releases. Boomi Deployment Framework enables enterprises to automate the Boomi Deployments to happen through enterprise wide CI-CD server and leverage other laid down DevOps tooling in the enterprises thereby enabling them to leverage the benefits of continuous deployment and continuous testing. It leverages AtomSphere API's and industry leading DevOps tools like Jenkins, Azure DevOps etc.



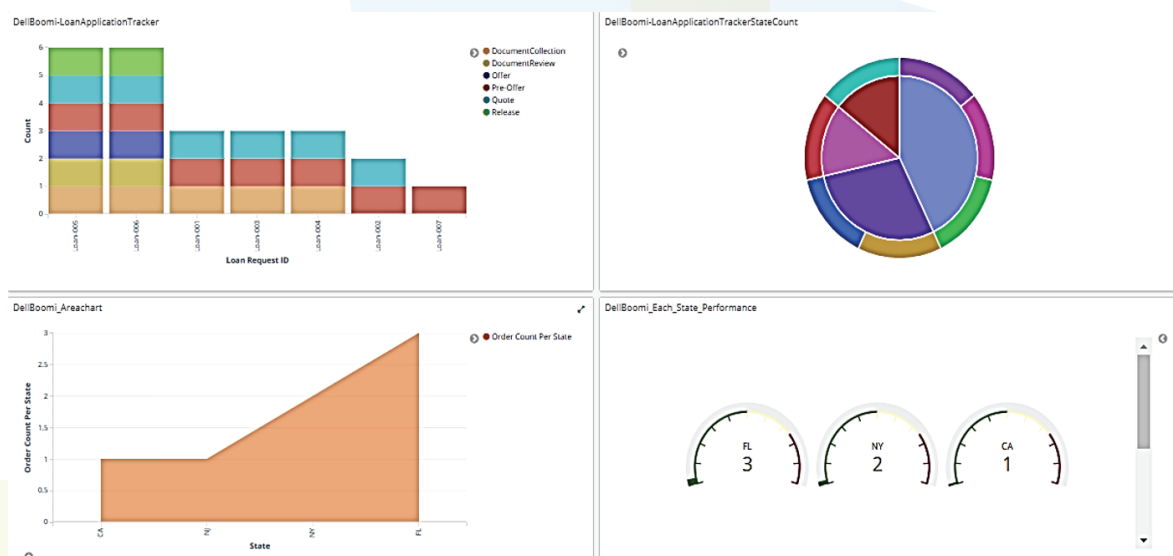
HCL's Real-time Operations and Analytics Reporting (ROAR™)

Of late business and IT users have stated interest in looking at KPI's in real time, from business users' perspective with an intention of analyzing trends and opportunities, and from IT users' perspective with an objective of identifying failure reasons and quick problem resolution. What if we want to analyze a data set that is larger in size or for a longer period than allowed by Atomsphere? How can I get complete, end to end visibility of a transaction flow that spans multiple IT applications?

HCL's Real-Time Operational and Analytics Reporting Framework provides an ELK based Real-Time view (Operational as well as Business) summarized by service, operation, partner etc. churning out visuals and dashboards built on next-gen UI Frameworks and enabled with a role-based access module custom developed by HCL.



With ROAR's API Analytics dashboard, you can get a granular level view of how your API's are behaving instead of the platform level view in Boomi



Frameworks aggregates data from multiple data sources and enables end to end transaction visibility as it flows through your IT landscape

Benefits of ADvantage™ Boomi

- Standardized project execution leveraging artifacts relates to Best Practices, Standards and Guidelines for Boomi Integration Development.
- Efficient operations of the Atomsphere platform as standardization makes the packages easier to manage and operating procedures can be streamlined.
- Reduced TTM and Cost savings due to reuse of Integrations artifacts and frameworks.
- A monitoring solution that spans beyond Boomi enabling real time operational and business KPI reporting.
- A DevOps Framework that enables an enterprise to apply laid down CI-CD tooling to Boomi as well and reap the benefits of efficient enterprise-wide DevOps.

HCL's Dell Boomi Practice

HCL has a well-established partnership with Dell Boomi and helped many a customer in their digital transformation journeys during last decade by leveraging Atomsphere platform capabilities related to Integration, API Management, Master Data Hub as well as EDI/B2B Management. HCL maintains a pool of certified consultants, developers and architects to install, configure and deliver Boomi integrations.

With diverse set of applications being present in a customer's landscape, ranging from SaaS Applications, IoT devices, Mobile Applications, Legacy Applications, Extended Partner Integration and others. HCL understands that adopting an iPaaS and a Hybrid Integration Platform like Dell Boomi AtomSphere can help enterprise meet the benefits like providing secure data and application integration with greater flexibility, scalability and reusability, besides enabling modernization of legacy systems through their APIfication.

Warehousing and logistics company in US	One of Australia's largest supermarket chains	Large global pharmaceutical company	Leading EU Energy Supplier
<ul style="list-style-type: none"> • Build an integration platform to handle M&A • Modernize IT to reduce TCO • Cloud First approach • Consolidate EDI integration with partners using Boomi • Migrated Axway EDI to Boomi 	<ul style="list-style-type: none"> • Implemented Cloud based HR solution, using SAP's Success Factors and EC-Payroll • Required a common strategy & approach for multi-country rollout • On-cloud Atom was used for SaaS applications integration and on-premise WebMethods platform • HCL implemented in 2013 and support till date 	<ul style="list-style-type: none"> • Design simple API interface to Enterprise Data Entities (Doctor, Patient, Hospital, Formula, etc.) • Existing AuthN and AuthZ rules have to be maintained, due to compliance and regulatory restrictions • Dell Boomi mediated between services on different channels, token type, transport protocols and data formats 	<ul style="list-style-type: none"> • Built API's reusable entities to ease data exchange between applications and enforce security policies to comply with enterprise Security standards. • Built Re-usable components to speed up onboarding of new API's • Provide common guiding direction to accomplish client's objective of having a robust integration platform
Analyze and document complex Axway EDI mapping, looking for reuse and mapping standardization	Integrated application & data in the cloud, removing the need to install software packages or acquire hardware components	Data aggregation using an ESB had a lot of latency. Introduced data virtualization	Reduced overall cost to develop integrations
Standardized the process to migrate integration resulting in a 20% effort reduction	Building complex application logic leveraging modern integration approach	Worked with Boomi Architects to propagate AuthN and AuthZ to target data source	HCL's ADvantage™ Boomi Offering of Deployment Framework was used to achieve Boomi DevOps Automation

For any queries, please write to digitaltransformation@hcl.com



Hello there! I am an Ideapreneur. I believe that sustainable business outcomes are driven by relationships nurtured through values like trust, transparency and flexibility. I respect the contract, but believe in going beyond through collaboration, applied innovation and new generation partnership models that put your interest above everything else. Right now 143,000+ Ideapreneurs are in a Relationship Beyond the Contract™ with 500 customers in 44 countries. **How can I help you?**