



LET'S TALK APPLICATIONS



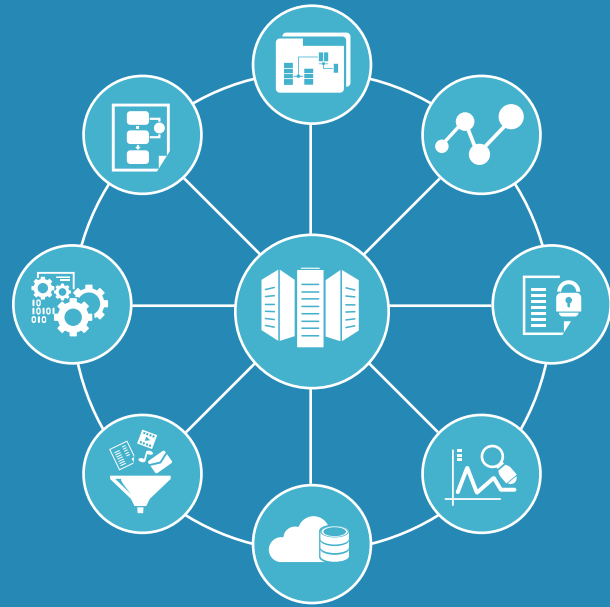
BIG DATA & BUSINESS ANALYTICS

REIMAGINING THE DATA WAREHOUSE IN THE AGE OF BIG DATA

HCL DATA WAREHOUSE OPTIMIZATION SOLUTION

ENTERPRISES ARE FACING A COST CRISIS WITH DECADES OF OLD DATA SITTING IN EXPENSIVE RELATIONAL DATA WAREHOUSING ENVIRONMENTS WHILE THERE IS AN EXPLOSION OF VOLUME, VELOCITY AND VARIETY OF DATA.

HOW DOES THE ENTERPRISE RATIONALISE ITS DATA WAREHOUSE SYSTEMS TO BRING DOWN THE COST OF RUNNING IT AND DEPLOY AN ANALYTICS PLATFORM TO UNLOCK THE BUSINESS POTENTIAL OF BIG DATA?



THE HCL DATA WAREHOUSE OPTIMIZATION SOLUTION: OPTIMIZE AND EXTEND

To compete effectively in the age of big data, the enterprise needs to switch their approach from traditional data warehousing by offloading appropriate data to a cost effective big data platform, and then leveraging the big data platform to enable the wealth of analytics that can be developed on both structured and unstructured data.

The HCL Data Warehouse Optimization Solution analyzes your current data warehouse eco-system, be it Teradata, Exadata, DB2, Netezza, Vertica, or SQL Server and offloads the appropriate functions and data to a cost-effective, big data platform. It also extends the big data platform by incorporating even more data in a cost effective manner (including unstructured data from weblogs, social media sites, audio and video files, images and documents) and building innovative advanced predictive analytics on the data sets.

ANALYZE



Collect
Statistics

Identify
quick
wins

Develop
roadmap

OFFLOAD



Establish
solution

Move
data

Migrate
ETL
jobs

Migrate
Interfaces

EXTEND



Establish
Big Data
COE

Add
additional
datasources

HCL Tools & Accelerators

- EDW Assessment Tool
- “EDW Diet” Framework
- Big Data Architecture Templates
- Data Ingestion Framework
- ETL Migration Tool
- Innovative Operating Model
- Self Service BI
- Advanced Predictive Analytics
- Digital Solutions

The HCL solution will help you build a big data ecosystem by:



Installing and configuring the big data platform with expertise in Hortonworks, Cloudera, MapR and Microsoft Azure



Providing a landing zone for all data sources from within and outside the enterprise using HCL's patented Data Ingestion solution for structured and unstructured data



Identifying data and workloads that can be moved to a big data platform: staging areas, analytic experimentation data, data archives and data that is infrequently used



Introducing cost-effective, open-source ETL tools



Enabling data movement and online queries between relational and big data platforms



Enabling real-time data movement using HCL's patented Real-Time Operational Analytics and Reporting (ROAR) solution



Managing the metadata using HCL's patented Meta-M solution



Developing data archives on big data platforms so that organizations can cost-efficiently store and analyze decades of data

WHY PARTNER WITH HCL

Developing data warehouse offload strategies and enabling analytics by big data technologies, are new capabilities, often with many partner products and services, making the task of embarking on a big data journey a potentially daunting task. As a leading big data system integrator, HCL brings together innovative solutions quickly, embracing next-gen technologies, to develop a seamless solution. Our customers have achieved enormous cost-saving and revenue-enhancing benefits by investing in our data warehouse optimization services and solutions.



Contact us for an offloading assessment today.
Write to us at ets.bis@hcl.com.



www.hcltech.com

Hello there! I am an Ideapreneur. I believe that sustainable business outcomes are driven by relationships nurtured through values like trust, transparency and flexibility. I respect the contract, but believe in going beyond through collaboration, applied innovation and new generation partnership models that put your interest above everything else. Right now 100,000 Ideapreneurs are in a Relationship Beyond the Contract™ with 500 customers in 31 countries. **How can I help you?**

Relationship[™]
BEYOND THE CONTRACT

HCL