

# NEXT.ai

## Research, Innovate, Experiment, Co-create



### Improve your odds of winning in a world of AI

Emerging technologies such as artificial intelligence, have disrupted every aspect of business processes. The proliferation of data from digital devices, connected machines drive the need to secure, manage, process, analyze and glean actionable insights from that data. Enterprises who have successfully monetized data have the added advantage as market leaders. With leading revenue growth and profitability, they even outperform their peers in providing better returns to stakeholders. There is, without a doubt, an overwhelming interest to adopt Artificial Intelligence(AI).

HCL's NEXT.ai is the result of decades of technology and engineering experience, for maneuvering the complex world of AI and facilitating the successful adoption of AI technology across businesses. NEXT.ai is a state-of-the-art laboratory focused on AI technologies, and the creation of vertical focused solutions that can be applied in Engineering and R&D enterprises. The NEXT.ai lab provides a collaborative facility for performing state-of-the-art research, ideation, creative problem solving, rapid experimentation and co-creation. This is a unique combination of frameworks, learnings, AI platforms and best practices in Design Thinking, Lean-Start Up and Agile for building higher levels of predictability.



#### The NEXT.ai Advantage

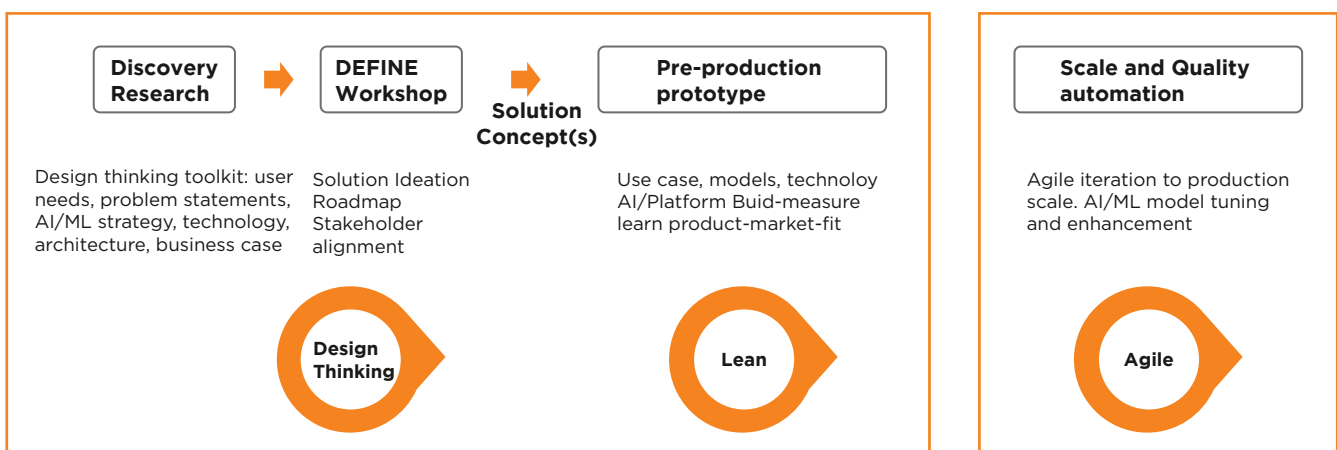
- 01** | Cross-functional teams: Technology, Design, Domain
- 02** | Innovation hub: Technology research, breakthrough innovations
- 03** | Solution Incubation: Market research, Client collaborations, Event participation
- 04** | AI OEM Partnerships: Nvidia, Intel
- 05** | Design Thinking: Creative Problem Solving
- 06** | In-house supercomputing: Powered by Nvidia DGX-1
- 07** | AI Platform Partnerships: Google, IBM, Microsoft, Amazon



## ▶ Design Thinking Process

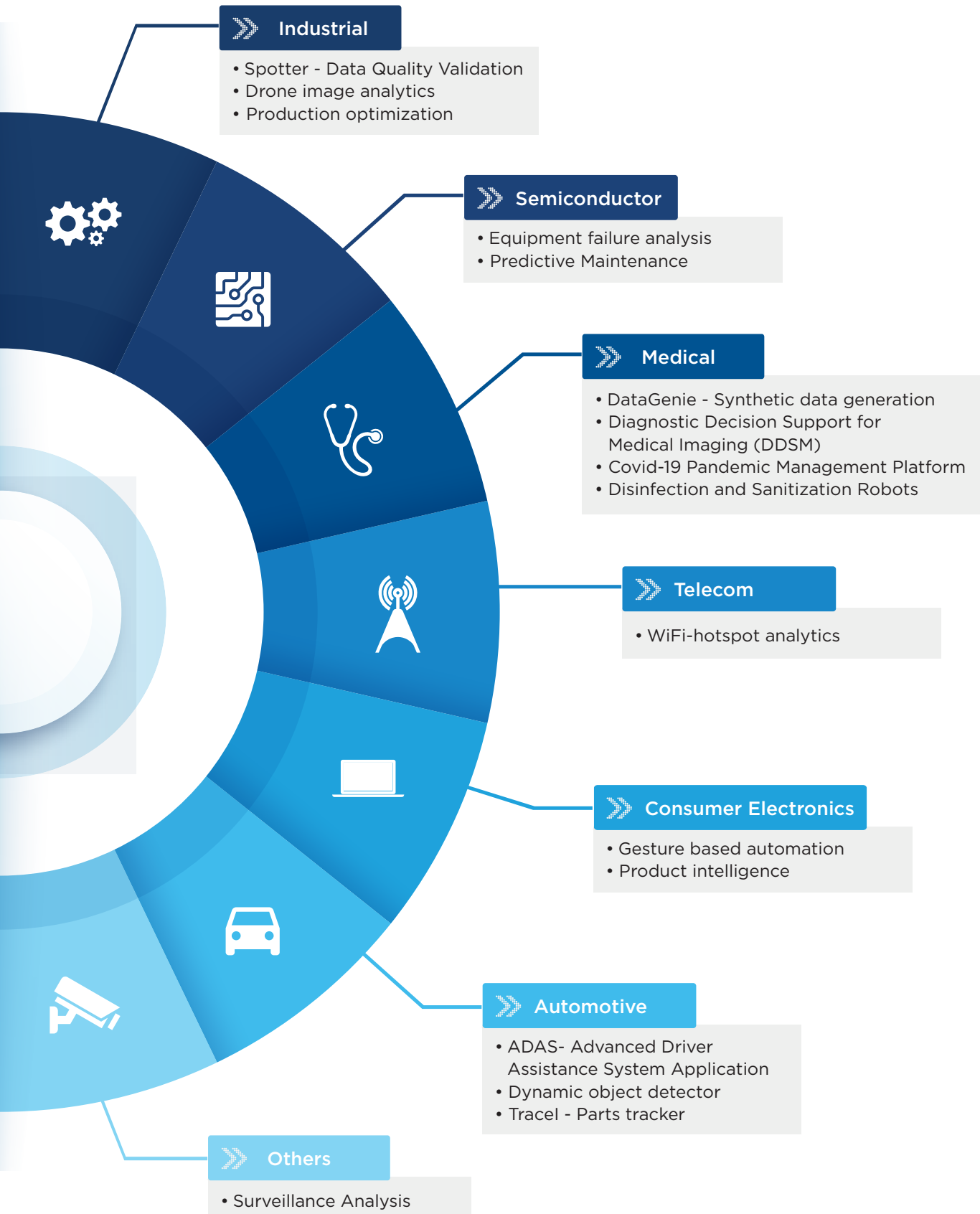
Great solutions are built when we intersect the right technology, right skills and industry expertise. A creative environment that connects cross functional teams consisting of clients, partners and SMEs building a conducive atmosphere for breakthrough innovations. The DEFINE workshop is based on the design thinking framework, empowering enterprises to create human-centered solutions that harness the power of artificial intelligence and accelerates time-to-value.

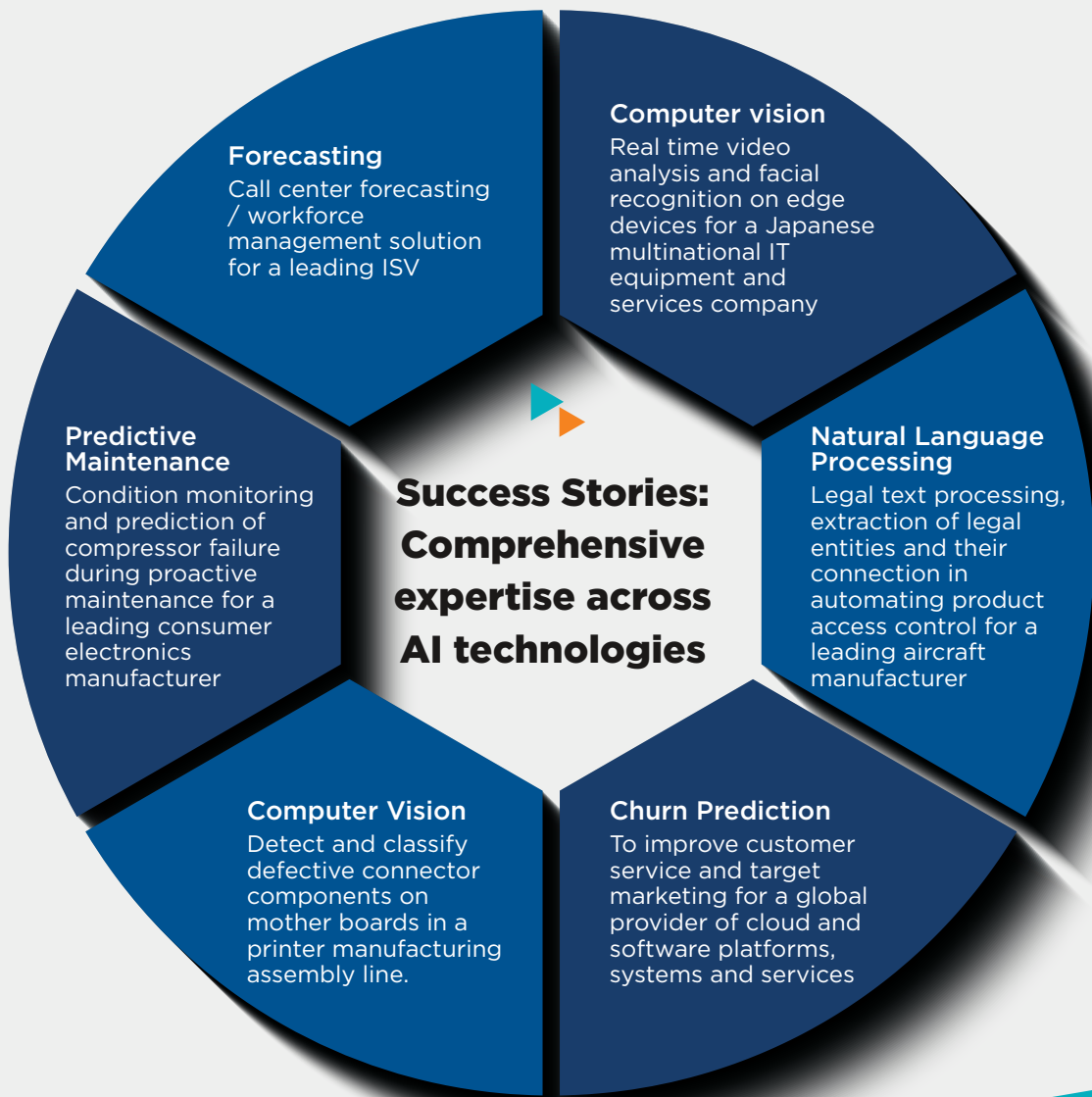
The workshop experience begins with discovery research, to get a better understanding of specific business challenges. The AI DEFINE workshop brings together stakeholders and domain experts, who co-create compelling solution(s) and a transformation roadmap. The full analytics consulting engagement employs Design Thinking, Lean Startup, and Agile best practices to realize the value of ai technology at enterprise scale and high quality.



## **NEXT.ai solutions canvas: Meeting the demands of today and readying you for the future.**

NEXT.ai Lab is on a constant vigil for emerging trends in AI. They scan the market continuously for white spaces and brings in innovative industry specific solutions built with state-of-the-art ai algorithms. These solutions address the business challenges, demands of today and ensures preparedness for the future simultaneously.





Enterprises wouldn't be "Truly Digital" if they didn't have a widespread and focused AI adoption strategy. NEXT.ai is the answer for those seeking to augment human capabilities, build man-machine interfaces, diagnostic/predictive analysis, automation, computer vision, knowledge mining, data synthesis etc.

NEXT.ai is the partner you need when envisioning, strategizing, implementing top of the line AI solutions to better your chances in a highly competitive market.



[www.hcltech.com](http://www.hcltech.com)

HCL Technologies is a next-generation global technology company that helps enterprises reimagine their businesses for the digital age. Our technology products, services, and engineering are built on four decades of innovation, with a world-renowned management philosophy, a strong culture of invention and risk-taking, and a relentless focus on customer relationships.

We offer an integrated portfolio of products, solutions, services, and IP through our Mode 1-2-3 strategy, built around Digital, IoT, Cloud, Automation, Cybersecurity, Analytics, Infrastructure Management and Engineering Services, amongst others. With a worldwide network of R&D, innovation labs and delivery centers, and 149,000+ 'Ideapreneurs' working in 45 countries, HCL serves leading enterprises across key industries, including 250 of the Fortune 500 and 650 of the Global 2000.

Visit NEXT.ai lab at HCL, Chennai or email [NEXT.ai@hcl.com](mailto:NEXT.ai@hcl.com) to define your NEXT!

**How can I help you?**

**HCL**