

**HCL**

# Adaptive Data Center

Powered by HCL U4X





# Adaptive Data Center

Powered by HCL U4X

The Adaptive Data Center enables an enterprise to develop and implement an enterprise-class next generation data center for securing and delivering critical information assets and by providing consumption based as-a-service model based on IaaS capability allowing optimal choice and flexibility while removing the need to upfront CAPEX.

### Vendor selection

Dynamically choose vendors based on their service cost at the time of consumption

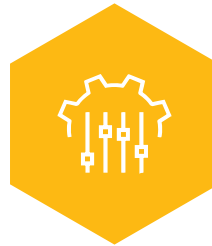
### Standardization

Disparate chargeback and governance models



### Diversity

Managing a variety of service providers



### Customization

Services should comply with internal policies and business processes



# Adaptive Data Center insights



### Flexible

- Blended hosting options (utility dedicated)
- Choice of service levels (platinum, gold, silver, bronze)
- Flexible pricing option (pay-as-you-go)



### Integrated

- Niche technologies
- Software defined data center
- Infrastructure as a service
- Platform as a service
- Seamless connectivity to public cloud



### Secured

- Infrastructure security (server & network)
- Data security
- Compliance
- Data protection



### Managed

- Visibility and control
- Self service portal
- Monitoring
- Notification
- Multiple sites across Europe
- Service catalogue with service description documents



# Adaptive DC

## Enterprise-class hybrid cloud services

- ‘Hybrid cloud solution’ that maximizes the benefits of software defined infrastructure in terms of flexibility, scalability, and programmability
- Standardized and built using validated and approved reference architectures defined catalogue, service description documents and commercials
- Seamless connectivity with public cloud – AWS, Azure, Google, Alibaba
- Always ON/Elastic private cloud – up to 50% buffer capacity available for immediate organic growth requirements
- Single pane of glass for management and integrated hybrid orchestration engines



# Service options



**Platinum**

### Mission critical “5 nines”

- 99.999% availability
- 2h RTO, 5min RPO
- 7 days 24 hours
- Two DC implementation- 2N+1
- Data restore <=2h
- 1h response for P1 calls
- Highly secure



**Gold**

### Highly critical “4 nines”

- 99.99% availability
- 4h RTO, 30min RPO
- 7 days 24 hours
- Two data center implementation
- Data restore <=4h
- 2h response for P1 calls
- Highly secure



**Silver**

### Critical “3 nines”

- 99.9% availability
- 12h RTO, 4h RPO
- Standard backup
- Business hours
- Data restore <=8h
- 4h response for P1 calls
- DR – Tape
- Medium secure



**Bronze**

### Non Critical “2 nines”

- 99% availability
- 72h RTO, no RPO
- Standard backup
- Business hours
- Single data center implementation
- 4h response for P1 calls
- Low security



# Service catalogue

Choice of enterprise class products and features

Different commitment options

HCL certified reference architecture



Convenience of termination

Standard configuration size

Faster migration & onboarding

Description	Operating system	Classification	Configuration
Compute - virtual	Microsoft Windows	Small	2 vCPU x 4 GB RAM
		Medium	2 vCPU x 8 GB RAM
		Large	2 vCPU x 16 GB RAM
	Linux	Small	2 vCPU x 4 GB RAM
		Medium	2 vCPU x 8 GB RAM
		Large	2 vCPU x 16 GB RAM
Compute - physical	Microsoft Windows	Small	1 CPU 8 Core, 192 GB RAM
		Medium	2 CPU 16 Core, 384 GB RAM
		Large	2 CPU 24 Core, 768 GB RAM
	Linux	Small	1 CPU 8 Core, 192 GB RAM
		Medium	2 CPU 16 Core, 384 GB RAM
		Large	2 CPU 24 Core, 768 GB RAM

Description	Classification	Configuration
Storage - block	Performance block tier	Performance of 2000 IOPS / TB < 1 ms
	Standard block tier	Performance of 500 IOPS / TB < 7 ms
	Value block tier	Performance of 50-100 IOPS / TB < 50 ms
Storage - file	Performance file tier	Performance of 500 FOPS / TB
	Standard file tier	Performance of 150 FOPS / TB
	Value file tier	Performance of 50-80 FOPS / TB
Storage - object	Object	Performance of 50 - 60 FOPS / TB
Backup	Central backup	<b>Backup on disk</b> - Required compute, backup storage tier and SLA - to be selected from the service catalog as per preference.
Archive	Central archive	<b>Archival on disk</b> - Required compute, backup storage tier and SLA - to be selected from the service catalog as per preference.

Cloud partners	DC partners	Network partners
 Gold Certified Partner		
 360 Degree Partner		
 Premium Consulting Partner		
 Global SI Partner		
 Global advanced SI Partner		
		
		



www.hcltech.com

**Hello there! I am an Ideapreneur.** I believe that sustainable business outcomes are driven by relationships nurtured through values like trust, transparency and flexibility. I respect the contract, but believe in going beyond through collaboration, applied innovation and new generation partnership models that put your interest above everything else. Right now 137,000 Ideapreneurs in 44 countries are in a Relationship Beyond the Contract™ with global enterprises helping them reimagine and transform their business. **How can I help you?**

**HCL**