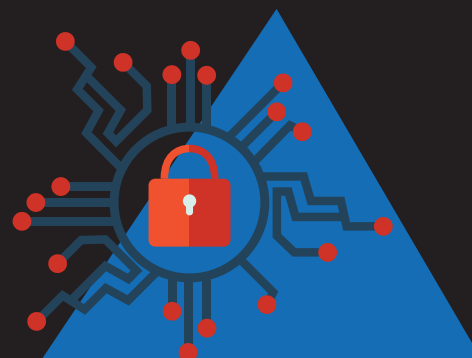


Delivering Secure, Software-defined Remote Access



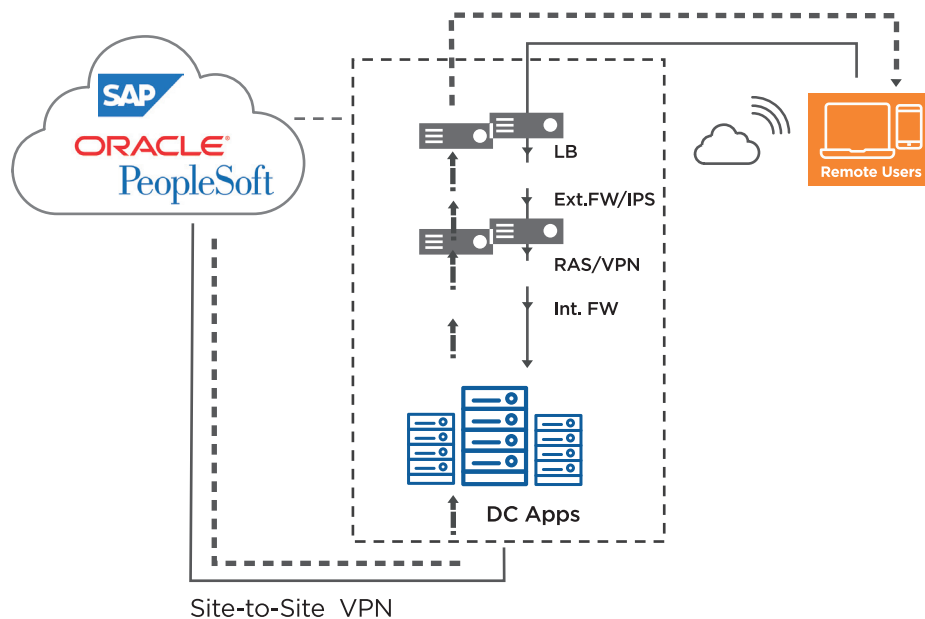
Earlier the corporate network was relatively simple, and the applications resided within the organization perimeter. The corporate network was confined and easier to secure. Users accessing the network were provided a secure connection through on-premise VPN solutions. But with introduction of cloud, infrastructure became borderless and the corporate network got extended to the internet. Users can now access the applications from anywhere and any device. VPNs backhaul traffic through a datacenter just to access apps running in cloud. This means a poor user experience and an increase in MPLS costs. Gartner recommends that enterprises adopt a zero-trust network access (ZTNA) service instead.

Remote access VPNs worked well in the network-centric world, but in the age of cloud and mobility, application access needs to be independent of the network.

Security, Cost, Performance and User Experience Challenges:



- Expensive to deploy (appliance costs) and complex to manage (operations costs)
- Security vulnerabilities (security issues) with traditional VPN architecture
- Complex ACLs/NAC (security issues) to manage access
- App access requires a user to be on the network – broad attack surface (security)
- Internal apps or VPNs are exposed to the Internet – a DDoS target (security)
- Backhaul over internal network adds to the latency and results in poor user experience
- User must remember to start VPN and must select a VPN gateway
- Network flap requires re-login to VPN



HCL Approach/ Solution:

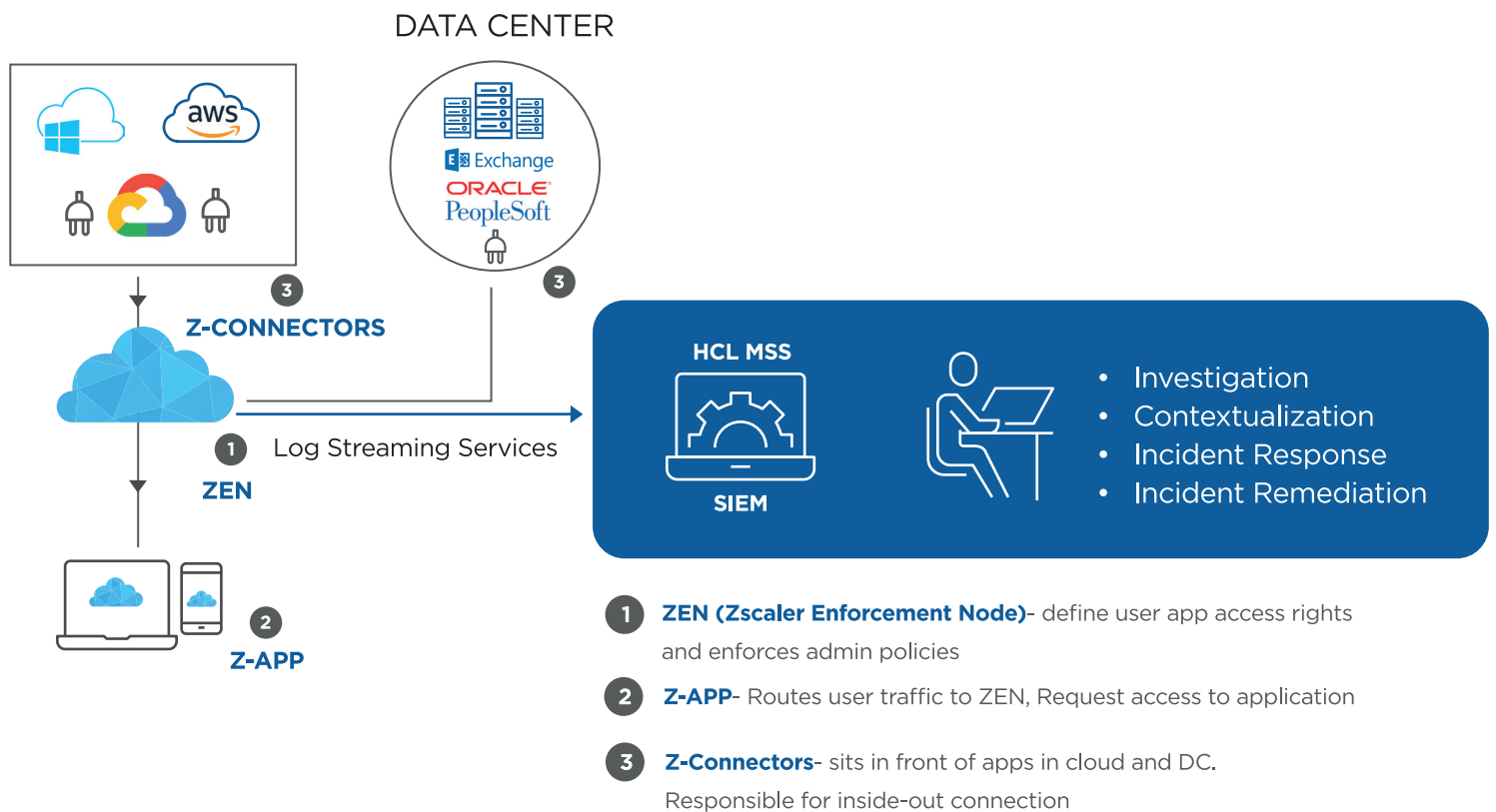


HCL solution is based on the fact that internet should be made available as a secure connection without need for traditional VPN, and corporate network should not be extended to remote users.

In addition, internal application should be invisible and not exposed to Internet where micro-segmented access from user to application is provided.

Hence HCL recommends its clients to have a remote access solution that utilizes a zero-trust strategy, where only authorized users are given access to the applications and not to the complete network. This makes the user experience better as they can swiftly and seamlessly access the respective applications irrespective of their location.

Such an access to internal applications is provided by a software-defined solution, powered by Zscaler Private Access. When an authorized user requests secure remote access to an internal application, the Private Access policy engine enables a lightweight, application layer-based tunnel through the Zscaler cloud. This tunnel is an encrypted channel and protects the application access from any kind of man-in-the-middle attack or unauthorized remote access



Solution Features:



Zscaler Private Access

- Access is application specific, with no need to define policy by IP address or ACL.
- Internal applications are invisible to users, unless users are authorized to access them.
- No user-to-network access. Users have direct access only to specific applications, and each application session has its own micro-tunnel.

HCL Managed Services

- Easier and faster deployment
- Simplified authentication mechanism
- Real Time Monitoring and incident response for threats.
- Policies maintained on an application level and not at network level

Benefits of HCL Recommended Approach:



- Based on Zero Trust model
- Magnitude savings in total cost of ownership versus traditional on-premise point products
- Traffic remains private via internet network
- Users receive better experience accessing applications even in hybrid and multi-cloud environment
- Per user – Per App granular access based on policies
- Real Time Visibility with 24*7 managed services powered through HCL CSFC (CyberSecurity Fusion Centres)

Client Success Story



One of the world's largest investment management firm, with a sales footprint across UK, North America, Asia and Europe.

CUSTOMER CHALLENGE:

- Private applications hosted in DC and cloud which need to be accessed by internal users and partners
- High number of users accessing from remote locations
- Movement of applications to public cloud resulted in remote users first accessing the DC via VPN and then routed to cloud

HCL SOLUTION:

- Users given access to specific applications only
- Authentication mechanism simplified for the user through one tap application on any device
- Simplified Management with real time visibility
- No CAPEX involved

BENEFITS:

- Cost of hardware installation and management reduced by 55%
- Remote user experience improved by 70%
- Reduction in the threats posed by remote access users/third party reduced.

Key Contacts / Resources



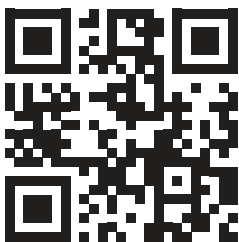
Contacts: cybersecmarketing@hcl.com



HCL Technologies (HCL) empowers global enterprises with technology for the next decade today. HCL's Mode 1-2-3 strategy, through its deep-domain industry expertise, customer-centricity and entrepreneurial culture of ideapreneurship™ enables businesses to transform into next-gen enterprises.

HCL offers its services and products through three lines of business - IT and Business Services (ITBS), Engineering and R&D Services (ERS), and Products & Platforms (P&P). ITBS enables global enterprises to transform their businesses through offerings in areas of Applications, Infrastructure, Digital Process Operations, and next generation digital transformation solutions. ERS offers engineering services and solutions in all aspects of product development and platform engineering while under P&P. HCL provides modernized software products to global clients for their technology and industry specific requirements. Through its cutting-edge co-innovation labs, global delivery capabilities, and broad global network, HCL delivers holistic services in various industry verticals, categorized under Financial Services, Manufacturing, Technology & Services, Telecom & Media, Retail & CPG, Life Sciences, and Healthcare and Public Services.

As a leading global technology company, HCL takes pride in its diversity, social responsibility, sustainability, and education initiatives. As of 12 months ending on December 31, 2019, HCL has a consolidated revenue of US\$ 9.7 billion and its 149,173 ideapreneurs operate out of 45 countries. For more information, visit www.hcltech.com



www.hcltech.com