

**HCL**

# Global Coating company

Redefining the future growth strategy  
with SAP on Azure



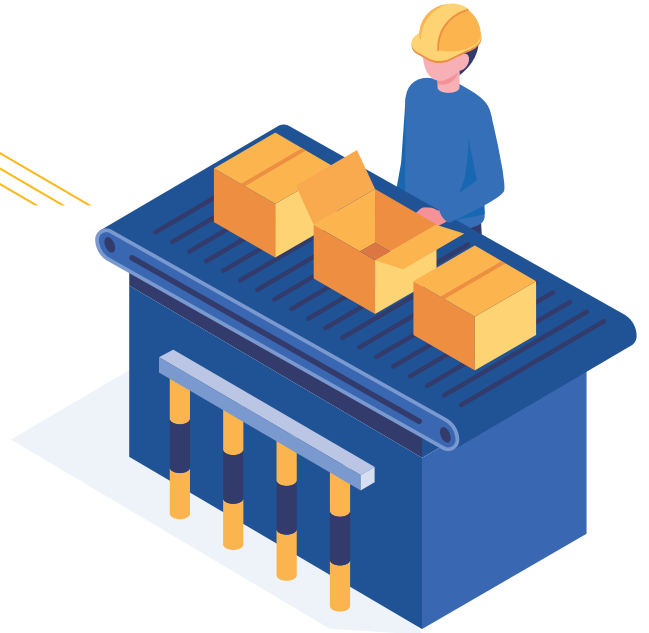


## About the client

The client is a leading global coating company dedicated solely to the development, manufacture, and sale of liquid and powder coatings. It has 150+ years of experience in the coating industry operating in 130 countries with 52 manufacturing plants, 4 technology centres and more than 13,000 people who develop, manufacture, distribute and support their products and services. The client provides a range of performance and transportation coatings for manufacturers of light and commercial vehicles, the refinish aftermarket futureproofing and for many industrial applications. Their innovative products and services include paint and powder, colour matching tools, application technologies, and customer training, support and business management systems.

01

**Global Coating company**  
Redefining the future growth strategy  
with SAP on Azure



## Business Challenge

The business identified the need for an agile and fast delivery of project infrastructure with SAP HANA footprints. The following were the major business challenges:

- ✓ Agile Implementation of SAP S/4 HANA without disruption to the legacy R/3 4.6c system
- ✓ Flexibility to scale the environment as solution matures in the multi-phased corporation wide roll-out of of S/4HANA
- ✓ Optimized Disaster Recovery capabilities
- ✓ Reduced lead time for capacity planning
- ✓ Reduced governance and oversight of IT systems



02

Global Coating company  
Redefining the future growth strategy  
with SAP on Azure

# Solution Highlights

HCL led the deployment of the client's SAP Central Finance environment on Public Cloud Platform. HCL was able to implement agile and fast delivery of project infrastructure within days for mid-size SAP HANA footprints using the Azure M-Series virtual compute. Further, HCL future-proofed the growth path with larger M-Series virtual computes up to 4TB HANA instances. The following were the major solution highlights provided:

- ✓ Microsoft Azure Cloud Environment setup as per best practices
- ✓ Production high availability deployment with 99.95% uptime SLA
- ✓ Out of region DR solution utilizing native SAP and public cloud functions
- ✓ Azure M-Series for SAP HANA and ESv3 Series for application compute
- ✓ Azure Active Directory (AAD) integration for Single Sign-On
- ✓ Integration into legacy SAP environment hosted in SAP HEC
- ✓ Managed Services to support all aspects of SAP and Non-SAP components running in Microsoft Azure



# Benefits Delivered

HCL worked closely with the customer's team to transform their SAP environment. The transformation had immediate benefits for the client, making the whole system more flexible and cost-effective with consumption-based cloud operations. The collaboration enabled a faster delivery of the project infrastructure within days for mid-sized SAP HANA footprints. Following were the major benefits delivered:



Reduction in overall infrastructure spends



Capacity Planning lead time reduction



Automated and streamlined business processes



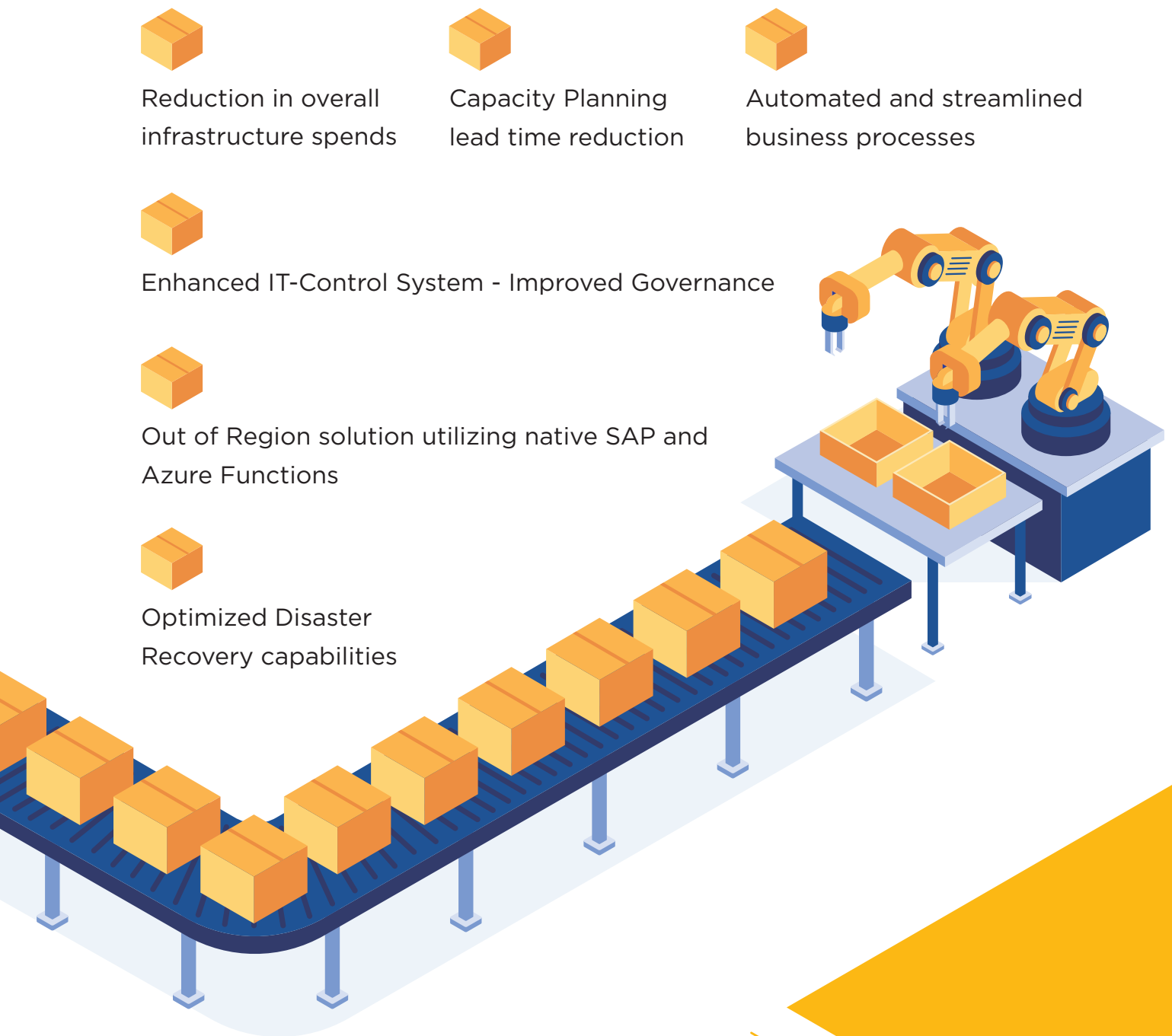
Enhanced IT-Control System - Improved Governance



Out of Region solution utilizing native SAP and Azure Functions



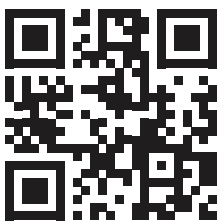
Optimized Disaster Recovery capabilities





HCL Technologies (HCL) empowers global enterprises with technology for the next decade today. HCL's Mode 1-2-3 strategy, through its deep-domain industry expertise, customer-centricity and entrepreneurial culture of ideapreneurship™ enables businesses to transform into next-gen enterprises.

HCL offers its services and products through three lines of business - IT and Business Services (ITBS), Engineering and R&D Services (ERS), and Products & Platforms (P&P). ITBS enables global enterprises to transform their businesses through offerings in areas of Applications, Infrastructure, Digital Process Operations, and next generation digital transformation solutions. ERS offers engineering services and solutions in all aspects of product development and platform engineering while under P&P. HCL provides modernized software products to global clients for their technology and industry specific requirements. Through its cutting-edge co-innovation labs, global delivery capabilities, and broad global network, HCL delivers holistic services in various industry verticals, categorized under Financial Services, Manufacturing, Technology & Services, Telecom & Media, Retail & CPG, Life Sciences, and Healthcare and Public Services.



[www.hcltech.com](http://www.hcltech.com)

As a leading global technology company, HCL takes pride in its diversity, social responsibility, sustainability, and education initiatives. As of 12 months ending on March 31, 2020, HCL has a consolidated revenue of US\$ 9.94 billion and its 150,000+ ideapreneurs operate out of 46 countries. For more information, visit [www.hcltech.com](http://www.hcltech.com)