

Network transformation for a leading private club operator



Customer background



A leading North American hospitality, leisure and entertainment company that owns and manages private golf, country, city and stadium clubs. Its clubs have over **400,000 members**, and employs around **20,000 employees** globally.

Challenges

Low bandwidth availability leading to poor customer experience and higher maintenance cost

Undistributed architecture made the network interconnections inflexible and unscalable

High recurring cost with huge dependence on traditional and cost intensive MPLS links, limiting bandwidth to an average of 10 mbps, insufficient to cater to the growing utilization

All the branches were centrally connected to two datacenters for the internet breakout leading to the higher occupancy of datacenter circuits

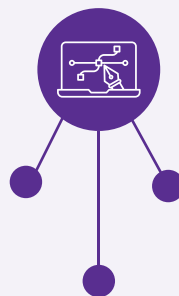


HCL's solution

The client's network infrastructure was architected into different stages using HCL's Transport Independent Site SDWAN framework -

Design and Consultancy

Different SD-WAN vendor solutions such as Cisco SD-WAN solution, HPE, VeloCloud and others were compared to check the best suited SD-WAN solution for the client's environment



The complete network environment was re-architected considering the network's transformation levers and agile constructs

Basis the Site Metallica and thorough network assessment, VeloCloud's cloud native SDWAN solutions formed the best fitment

Build and operations



HCL identified the most critical sites, which included their datacenters and other major hubs. The identified sites were implemented with dual connectivity model to establish redundancy at each branch site

To replicate the model at different sites, runbook templates were created by HCL for the rest of the clubs i.e. around 190 sites

The training sessions were planned, and knowledge was transacted to the customer team for model replication at rest of the sites. Handover was given within ten days for the usage and implementation of network services

HCL is currently handling the ongoing management and maintenance of VMware (Velocloud) SD-WAN sites of the client's network infrastructure, globally



Benefits

The 'Intelligent Branch' module deployed as a part of HCL TIS framework brought the following benefits:



Faster internet connectivity

The sites were implemented with local internet breakouts which helped them connect globally with quick internet availability



Single pane of glass

Centrally managed and controlled networks with a single management pane for all their network devices



Higher bandwidth

The existing single MPLS link (~10 Mbps) was replaced with dual internet broadband links (~100 Mbps) resulting in higher bandwidth availability with significant reduction in annual cost



Enhanced customer experience

The agility and scalability of network devices brought enhanced customer experience and better connectivity using aggregated throughput and automated failover for all their network services

For more information, please reach out to
Contact.NGN@hcl.com



www.hcltech.com

HCL Technologies (HCL) empowers global enterprises with technology for the next decade today. HCL's Mode 1-2-3 strategy, through its deep-domain industry expertise, customer-centricity and entrepreneurial culture of ideapreneurship™ enables businesses to transform into next-gen enterprises.

HCL offers its services and products through three lines of business - IT and Business Services (ITBS), Engineering and R&D Services (ERS), and Products & Platforms (P&P). ITBS enables global enterprises to transform their businesses through offerings in areas of Applications, Infrastructure, Digital Process Operations, and next generation digital transformation solutions. ERS offers engineering services and solutions in all aspects of product development and platform engineering while under P&P. HCL provides modernized software products to global clients for their technology and industry specific requirements. Through its cutting-edge co-innovation labs, global delivery capabilities, and broad global network, HCL delivers holistic services in various industry verticals, categorized under Financial Services, Manufacturing, Technology & Services, Telecom & Media, Retail & CPG, Life Sciences, and Healthcare and Public Services.

As a leading global technology company, HCL takes pride in its diversity, social responsibility, sustainability, and education initiatives. As of 12 months ending on September 30, 2021, HCL has a consolidated revenue of US\$ 10.82 billion and its 187,634 ideapreneurs operate out of 50 countries. For more information, visit www.hcltech.com