

Extending enterprise security to enhance remote **working experiences**

Making global biopharmaceutical solutions future-ready



Customer profile

US-based leading multinational contract research organization, specializing in helping companies with late-stage clinical trials.

Business needs

The client wanted to expand their security capabilities to adapt to the new remote working environment. To achieve this, the requirement was to develop a cost-effective and security-focused solution aimed at enhancing employees' experience through increased work visibility. The business needed to:



Unify collaboration experiences



Simplify control over IT



Improve internet performance for the end-users



Implement fast triaging and resolution of IT issues

HCL solutions and services

Focused on transforming the infra environment for monitoring, HCL implemented the digital experience monitoring (DEM) solution in three stages, as follows:

- 1. DEM Solution design and proposal:** This involved the following:
 - a. Designing a security framework
 - b. Proposing its deployment strategy
- 2. Solution implementation:** The process consisted of –
 - a. Using Zscaler Client Connector to configure ZIA and enable ZDX solution in the client’s environment
 - b. Consolidating multiple point products into a unified platform
 - c. Simplifying IT operations for platform management
- 3. Post-deployment services:** This involved delivering performance analytics and custom reports in continuous/regular intervals.

Value delivered

With HCL’s deployed solution, the biopharmaceutical solutions company was able to improve employee productivity. Associated business benefits included:



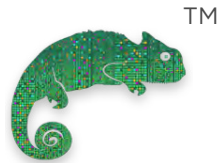
Improved net promoter score (NPS) by 18 points



Unified and enhanced operational insights



Enabled IT teams to troubleshoot and quickly resolve end-user IT issues



Dynamic Cybersecurity With HCL

To know more visit: <http://www.hcltech.com/cyber-security-grc-services> or write to us at Cybersecurity-GRC@hcl.com

CI-112251309734735745955-EN00GL



HCL Technologies (HCL) empowers global enterprises with technology for the next decade today. HCL’s Mode 1-2-3 strategy, through its deep-domain industry expertise, customer-centricity and entrepreneurial culture of ideapreneurship™ enables businesses to transform into next-gen enterprises.

HCL offers its services and products through three lines of business - IT and Business Services (ITBS), Engineering and R&D Services (ERS), and Products & Platforms (P&P). ITBS enables global enterprises to transform their businesses through offerings in areas of Applications, Infrastructure, Digital Process Operations, and next generation digital transformation solutions. ERS offers engineering services and solutions in all aspects of product development and platform engineering while under P&P. HCL provides modernized software products to global clients for their technology and industry specific requirements. Through its cutting-edge co-innovation labs, global delivery capabilities, and broad global network, HCL delivers holistic services in various industry verticals, categorized under Financial Services, Manufacturing, Technology & Services, Telecom & Media, Retail & CPG, Life Sciences, and Healthcare and Public Services.

As a leading global technology company, HCL takes pride in its diversity, social responsibility, sustainability, and education initiatives. As of 12 months ending on December 31, 2021, HCL has a consolidated revenue of US \$ 11.48 billion and its 208,000 ideapreneurs operate out of 52 countries. For more information, visit www.hcltech.com



www.hcltech.com