

## ENABLING BUSINESS AGILITY THROUGH DATA CENTER NETWORK OVERHAUL

WX8877

### Customer Background



- ▶ The customer is a leading American multi-national medical technology company with more than a century of experience in development, manufacturing and sale of medical supplies, devices, laboratory equipment, and diagnostic products worldwide. The customer employs over 50,000 people across 50 countries and wants to keep its operations aligned to the ever-changing market needs across 190 countries it operates in.



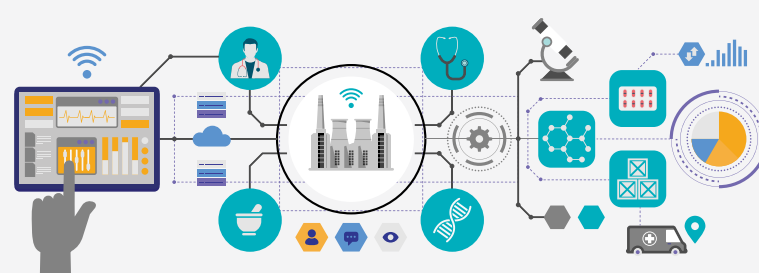
### Drivers Behind a Network Overhaul

- ▶ Fragmented physical infrastructure with outmoded legacy systems were impeding business agility of the global medical technology company. With more than 5,000 network assets scattered across Data Center infrastructure, the organization found it strenuous to deploy new applications and services. It was also difficult to quickly adjust network capacity to meet changing application workload demands in order to align operations with rapidly changing market needs.

Configuration and change management activities were prone to human error and were taking significant amount of time and manual effort. Adding to this was the increasing complexity in troubleshooting application performance because of poor visibility of the entire network infrastructure.

Absence of a 'single pane of glass' for managing and accessing different network solutions, tools and devices, and vendor lock-ins added to the list of challenges.

### HCL's Software defined Networking Framework was the Answer



- ▶ The network solution was architected basis HCL's SDN framework-Sensus. It covered end-to-end transformation of the legacy Data Center network.

“**SENSUS** involves a robust end-to-end assessment of customer landscape on various parameters such as physical and virtual infrastructure, network device status, traffic flow, application ecosystem and behavior, and Data Center operational processes.”

These parameters helped in identifying the optimum vendor ecosystem for underlay, hypervisor, network function virtualization, overlay, monitoring and analytics, and migration layers of the SDN stack.

The final architecture supported network programmability, virtualization, automated provisioning, and central management and control, independent of underlying hardware. Network virtualization and policy-based automation aided faster deployment of new application and Data Center services for smooth network performance across the infrastructure.



### Benefits of Software defined Networking by HCL

- ▶ **Increased network agility** by dynamically scaling up the network and adjusting network-wide traffic flow based on workload demand.
- ▶ **Improved operational efficiency** through centralized management and orchestrated network provisioning in minutes.
- ▶ **Faster time-to-market** due to quick deployment of new applications and services, enabled through network virtualization and policy-based automation.
- ▶ **Reduced capital cost** by eliminating dependencies on expensive proprietary hardware.
- ▶ **Improved network monitoring and troubleshooting** through centralized real-time pervasive visibility and analytics into network and application performance across the infrastructure.

### Who We Are

- ▶ HCL Network Practice has been delivering managed network services for almost a quarter century. We bring innovative network solutions and products to help customers future-proof their networks and adapt technologies such as SDWAN, SDN, Automation & Orchestration, Unified communication and collaboration. We have 3500+ highly skilled, certified networking professionals with experience of working across multiple engagements of varying scale and complexity. We provide complete lifecycle of Network Services - from strategy (technology platform or vendor), design, implementation and managed services across all facets of data and collaboration networks in the enterprise. We have state-of-the-art Customer Experience Center and Technology Labs that give customers a first-hand experience on network technologies and trends, our current and future offerings.

PAC (A CXP Group company) publishes an exclusive report on HCL offerings in DACH market. HCL's unique next-gen network services and carefully devised localization strategy is creating substantial value for customers in the DACH market. [Download the report here](#)



To find out more about how HCL's Infrastructure Management services can help you simplify IT complexity and support your business' digital initiatives - [please contact us at ITO@hcl.com](mailto:ITO@hcl.com)