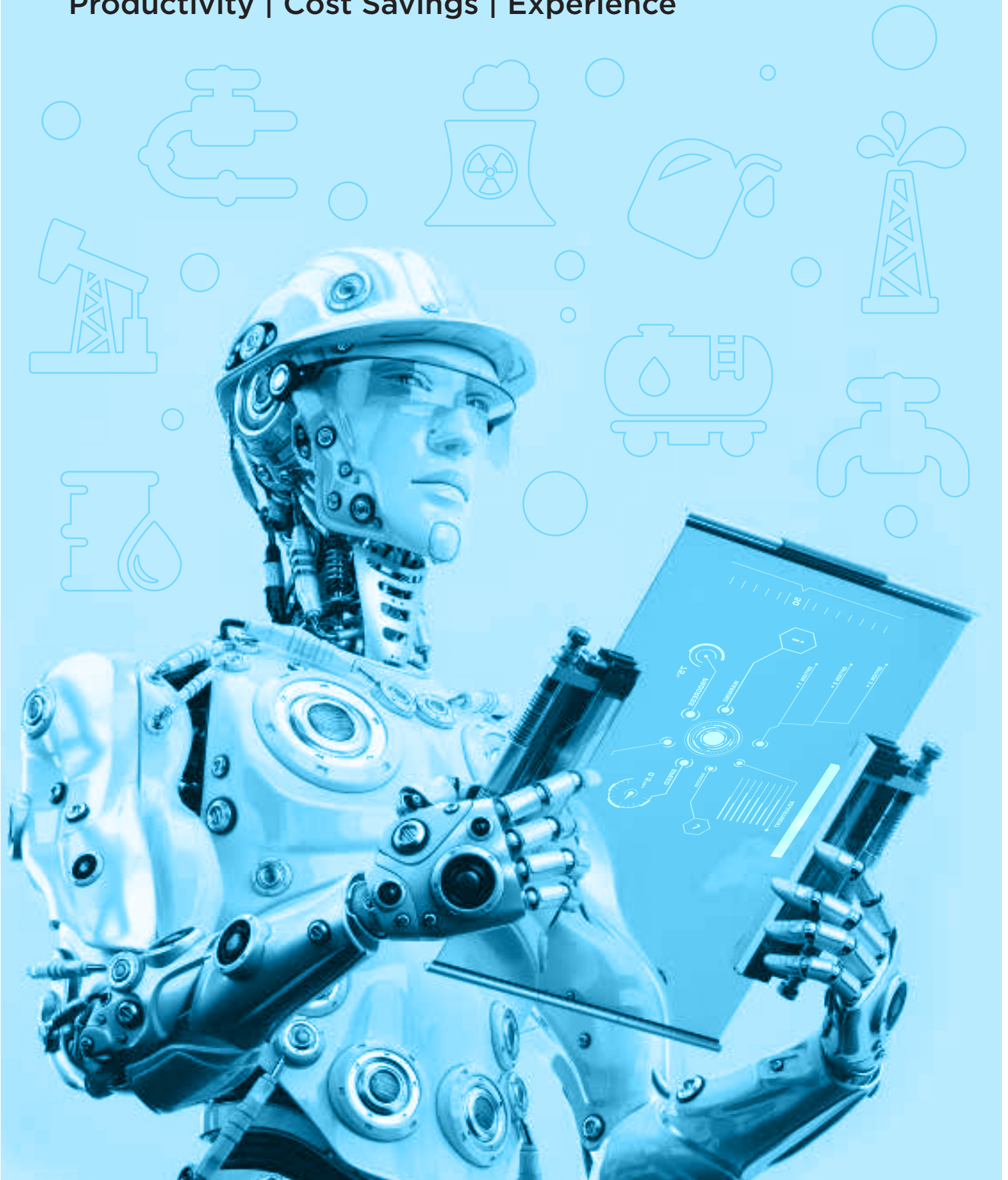


ROBOTIC PROCESS AUTOMATION (RPA) IN OIL AND GAS




Productivity | Cost Savings | Experience





'RPA is a promising new development in business automation that offers a potential **ROI of 30-200%** — in the first year.' - McKinsey*

RPA - BENEFITS



PROCESS AUTOMATION

-  Higher agility
-  Enriched customer experiences
-  Improved business operations


ACCURACY & RELIABILITY

-  Elimination of human errors
-  Quality assurance

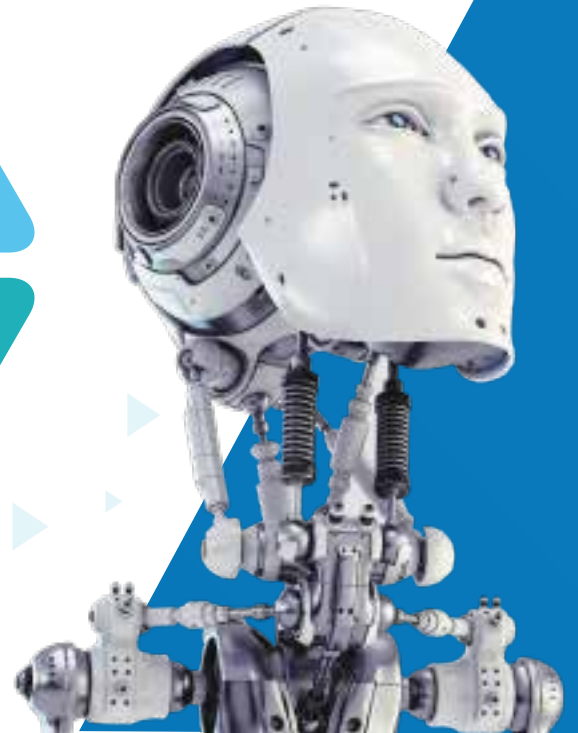
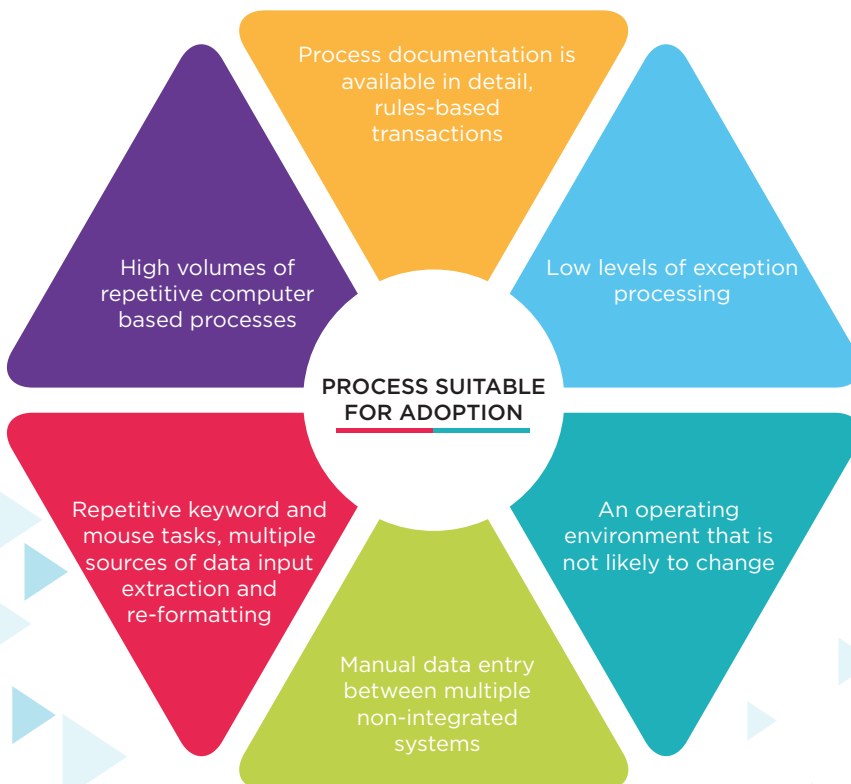
SAVINGS & PRODUCTIVITY

-  ~**65%** cost savings & productivity gains
-  ~**50%** reduction in resource costs

RAPID SCALABILITY

-  Ease of scalability and rapid deployment

RPA - ADOPTION PROCESS



RPA - MATURITY STAGES

ACTING

THINKING

RPA Today

	Stage 1: Basic Digitization	Stage 2: Enhanced Digitization	Stage 3: Cognitive Orchestration
Function	<ul style="list-style-type: none"> Populate tables Quality and testing Desktop consolidation 	<ul style="list-style-type: none"> Analyse unstructured data Sentence segmentation Speech tagging Named Entity Extraction 	<ul style="list-style-type: none"> Understand Customers Query rules engines Complete Transactions
Knowledge & Rules Requirement	<ul style="list-style-type: none"> Static rules set 	<ul style="list-style-type: none"> Static rules sets Knowledge isolated to context 	<ul style="list-style-type: none"> Extensive Knowledge Needs Continual Data feed Dynamic rules capability
Relevant Technology	<ul style="list-style-type: none"> Screen scraping Document workflow Task scheduler Sophisticated macros 	<ul style="list-style-type: none"> Natural Language processing Content analytics Process Automation Enterprise Search 	<ul style="list-style-type: none"> Cognitive computing Data mining Platform recognition

WHY HCL?

SCALE



1000+ trained professionals



500+ process blueprint with automation roadmap

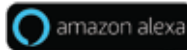


700+ BOTS implemented



DRYiCE Automation & Orchestration Suite deployed across 150+ customers

PARTNERSHIPS



RECOGNITIONS



LEADER
Robotics Automation Services 2017

ZINNOV ZONES



MAJOR CONTENDER
Business process service delivery automation solutions

EVEREST GROUP



WINNER
Best innovation in RPA

ALCONICS AWARDS
AI SUMMIT 2017





CASE STUDY ORDER PROCESSING



CHALLENGES

- Improve productivity through automation of different stages from PR to PO Process
- Build cost references from previous purchases & market price
- Auto approvals of selected items
- Eliminate manual processing by Quotation committee during pre-tendering and evaluation stage



HCL STEPS - IN

- Digitization - Extraction of details like material information, pricing as input to technical evaluation
- Machine Learning - Basis category list automating technical evaluation and select of best bidder
- RPA - Automated extraction from SAP. Workflow & Rule Engine Automation



OBJECTIVES

- Process Streamlining
- Process Standardization
- Enhance Database
- Decrease processing time



IMPACT DELIVERED

- Out of 3 sub processes, 1 sub-process (eRFx Creation was completely automated)
- 60% Purchase Orders below threshold value were straight through processed
- Overall 40% decrease in manual productivity
- Procurement Officers now spend more time on strategic sourcing activities
- Standardisation of process across business units/ geographies
- Decrease in errors and improvement in compliance due to enhanced auditing

To know more or to schedule a meeting with our subject matter expert send an email to OGN@hcl.com



www.hcltech.com

Hello there! I am an Ideapreneur. I believe that sustainable business outcomes are driven by relationships nurtured through values like trust, transparency and flexibility. I respect the contract, but believe in going beyond through collaboration, applied innovation and new generation partnership models that put your interest above everything else. Right now 132000 Ideapreneurs are in a Relationship Beyond the Contract™ with 500 customers in 44 countries. **How can I help you?**

Relationship[™]
BEYOND THE CONTRACT

HCL