

HCL MODERNIZES IBM i SERVER ENVIRONMENT FOR A US MASS MEDIA MAJOR

Customer Background



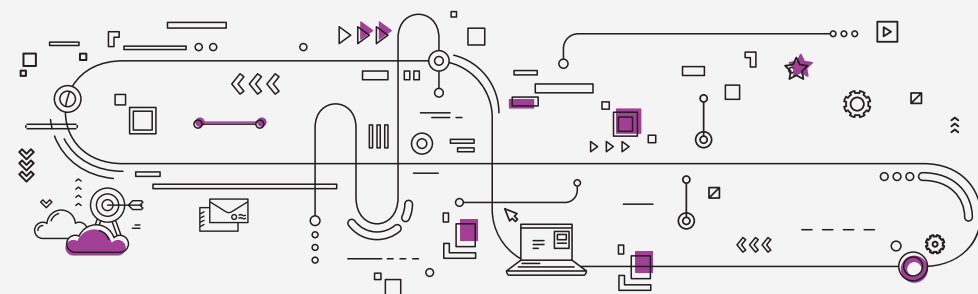
- ▶ The customer is a diversified multinational mass media and entertainment conglomerate in the US.
- ▶ Employing around 200K employees, the customer has annual revenue of around USD 25 B.

Challenged by a big complex environment with 52 Logical partitions (LPARs) along with outdated hardware and Operating System(OS) version, the customer had

- ▶ High server maintenance costs
- ▶ High downtime for critical production systems which led to huge monetary losses
- ▶ Multiple data center footprints

Customer Pain Points

Solution



- ▶ HCL consolidated multiple Power5 model servers of the existing setup to support scalable Power hardware
- ▶ HCL consolidated the frames and logical partitions, leading to count reduction to almost 50%
- ▶ Consolidated hardware and reduced multiple data center footprints, resulting in easy management and optimized hosting cost
- ▶ HCL upgraded OS versions to supported versions
- ▶ Migrated, automated, and reconfigured tape technologies as a part of the overall server maintenance and hardware management efforts

- ▶ Reduced overall server maintenance cost and server footprints by:
 - Consolidation of multiple Power 5 servers
 - Reduction in the number of:
 - Physical frames to almost half
 - LPARs to 40%
- ▶ Decommissioned multiple LPARs and physical frames in the process
- ▶ Minimized downtime with go-live migrations for critical production systems
- ▶ Technology upgrades resolved outdated technology issues while automation, reconfiguration, consolidation and centralization helped increase efficiency

Impact



To find out more about how HCL's Infrastructure Management services can help you simplify IT complexity and support your business' digital initiatives - ***please contact us at ITO@hcl.com***