

**HCLTech** | Supercharging  
Progress™

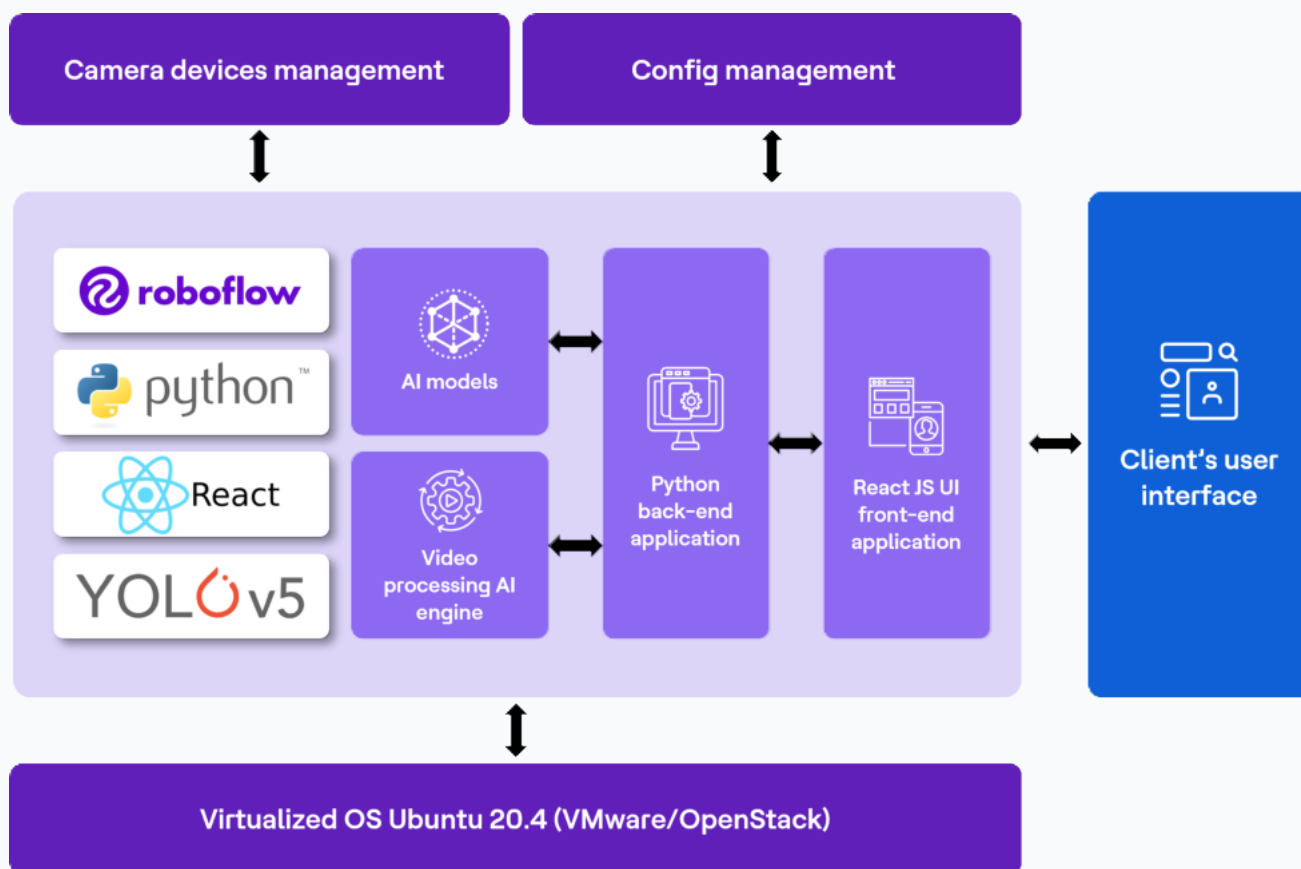
# HCLTech Smart Video Analytics solution



# Overview

The next-gen 5G network boasts impressive features – from substantially faster data transfer and low latency to the ability to support a high density of connected devices. HCLTech leverages these powerful strengths of 5G combined with the cognitive capabilities provided by AI/ML to deliver our Smart Video Analytics solution. This cutting-edge tool tracks and analyzes live video streams from various sources, including IP cameras, surveillance cameras, drone-mounted cameras and even standard webcams. It then extracts valuable metadata from live video in real-time, triggering instant alerts based on pre-defined parameters. This leads to increased situational awareness and proactive security measures, empowering businesses and organizations to respond effectively to potential threats or incidents.

## The architecture of the HCLTech Smart Video Analytics solution



The HCLTech Smart Video Analytics solution is equipped with a robust video processing AI engine that processes live video streams. The AI model, developed using Roboflow, caters to various use cases. The platform's back-end is built in Python, while the front-end UI is powered by React JS. This highly scalable solution can be customized for specific industry verticals by developing AI models. It can be deployed both on-prem and in public cloud environments, providing flexibility to users.

Along with the standard security and surveillance features, the solution offers advanced AI/ML-based

features, delivering real-time insights to streamline operations and elevate customer experiences. For instance, it offers real-time shop floor insights that can help manufacturers optimize operations and boost productivity.

Our solution also includes a variety of horizontal use cases that can be integrated into different industry verticals, all designed to drive employee safety, operational efficiency and surveillance.

## Worker safety

Our solution analyzes the live feed from the entrance camera to check whether the individual is wearing the required safety gears for protection. The entry gate control can be integrated to ensure that it opens only when all protective gear is detected.



## Weapon detection

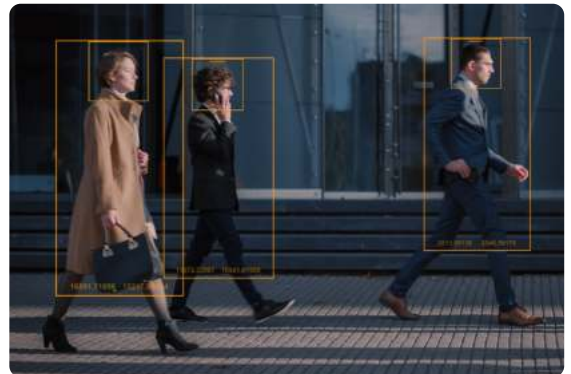
Our solution monitors the live camera feeds to detect if a person is carrying weapons like handguns and immediately triggers alerts to the security/police personnel when required, ensuring public safety.



## People analysis

The live feed from the camera is analyzed to monitor and track people's movements and gestures in public areas.

This technology can be used for various purposes, including public safety, setting up geo-fencing, detecting intrusions, identifying loitering individuals, monitoring patients in clinics, improving customer experience in retail stores and more.



## Drone inspection

Our solution utilizes the live feed from a camera fitted in the drone to inspect objects that are located at elevated positions. In addition to providing the live video feed, our solution also analyzes it to detect any anomalies.

This technology can be used for inspecting windmills, electrical transmission cable, towers, overhead switches/cables and more.





# HCLTech | Supercharging Progress™

Contact us for more information: [Crajesh.Krishnan@hcl.com](mailto:Crajesh.Krishnan@hcl.com)

HCLTech is a global technology company, home to 224,000+ people across 60 countries, delivering industry-leading capabilities centered around digital, engineering and cloud, powered by a broad portfolio of technology services and products. We work with clients across all major verticals, providing industry solutions for Financial Services, Manufacturing, Life Sciences and Healthcare, Technology and Services, Telecom and Media, Retail and CPG, and Public Services. Consolidated revenues as of 12 months ending September 2023 totaled \$13.1 billion. To learn how we can supercharge progress for you, visit [hcltech.com](https://hcltech.com)

[hcltech.com](https://hcltech.com)

