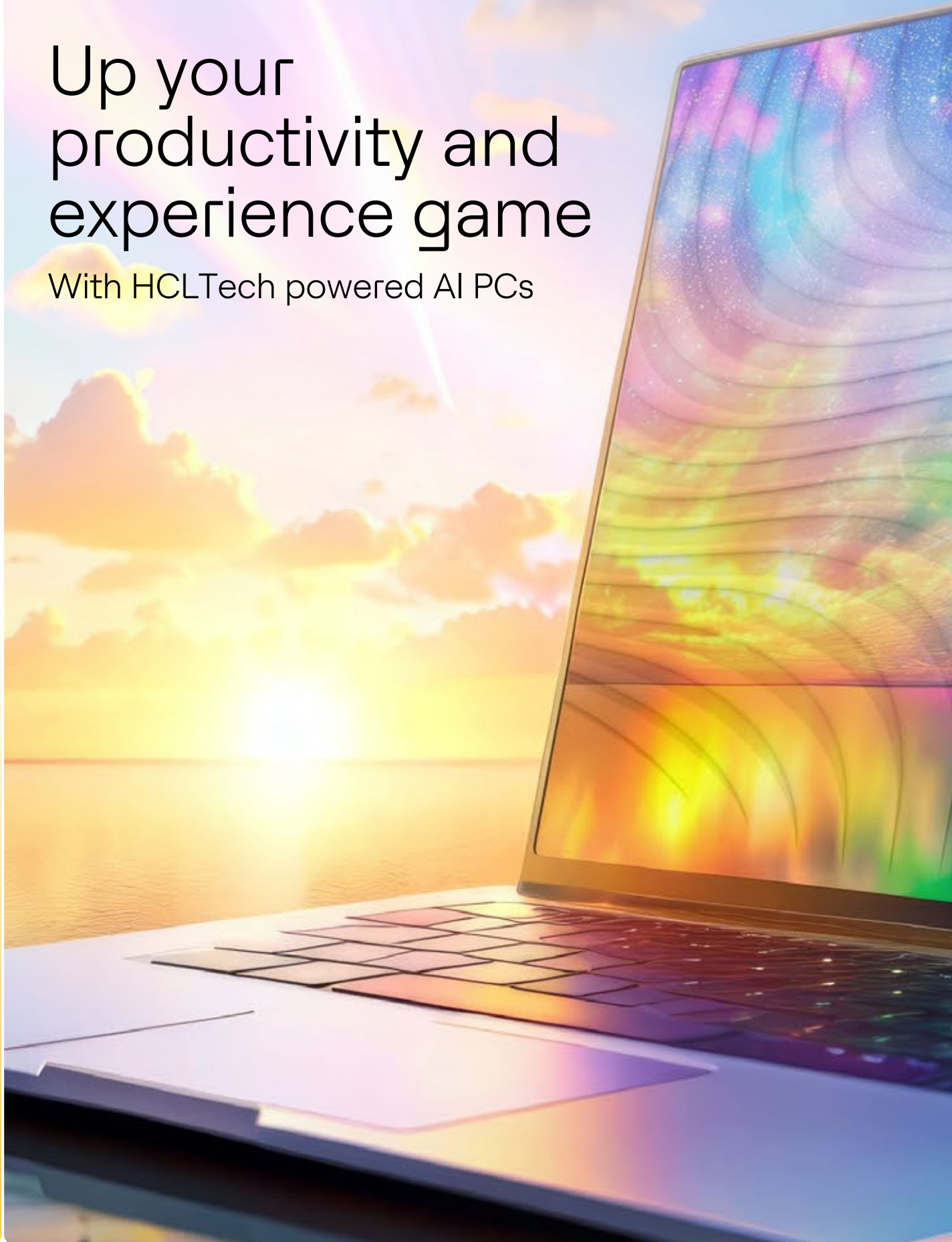


# Up your productivity and experience game

With HCLTech powered AI PCs



## Overview

Generative AI is transforming industries by automating processes that once required human intelligence. From generating knowledge base articles to summarizing chats and calls, AI enhances productivity, reduces workloads and streamlines tasks across various sectors. Yet, as GenAI reshapes creativity and efficiency, it also raises concerns around security, compliance and ethical use. As the technology continues to evolve, its impact on IT and many other industries will likely be profound, reshaping the landscape of work and creativity.

HCLTech is helping enterprises harness the potential of GenAI through AI PCs that deliver on productivity, performance and user experience—all with enhanced security and control.



## The need for an AI PC

Enhancing productivity and experience is one of the key priorities for enterprise clients in the Digital Workplace space and AI broadly along with GenAI specifically are critical in enabling that. However, most of the large and small language models that enable this like GPT, LLaMa, Gemini, rely heavily on public cloud like AWS, Azure and Google Cloud due to high resource demands, which certainly bring challenges



### Limited control

When deploying GenAI services on a public cloud, customers have limited control over how they are executed and managed



### Resource constraints

If your GenAI workloads require substantial computational resources (such as large-scale training of deep learning models), you might encounter constraints related to memory, CPU and GPU



### Data privacy and security

Strict data security and privacy mandates may govern how you work with AI services in the public cloud



### Latency and response time

While cloud providers optimize their infrastructure for performance, there may still be inherent latency due to network communication and resource allocation



### Infrastructure reliability

Public cloud services are generally reliable, but occasional outages or disruptions can impact performance



### Cost considerations

GenAI workloads can consume significant resources in public cloud, leading to higher expenses

AI PCs address these challenges by providing optimized hardware with built-in AI accelerators. These chips are purpose-built for GenAI workloads. Additionally, AI PC providers emphasize on a comprehensive software ecosystem with developer tools, APIs, and runtime frameworks. By enabling client-side AI, enterprises reduce latency, enhance data privacy, and allow efficient resource utilization. Lastly, these platforms offer cost-effective solutions for end-to-end GenAI pipelines, empowering creativity, productivity, and privacy while enhancing performance. AI PCs are available with Intel Core Ultra Processors, AMDs Ryzen AI Processors and Nvidia's GeForce RTX SUPER Workstations.

# AI PC capabilities

## 1 Optimized Hardware

These platforms consist of AI-focused chips, such as the Intel Core Ultra processors, with built-in AI accelerators. These purpose-built chips efficiently handle AI computations alongside standard CPU and GPU cores

## 2 Three compute engines

AI PCs generally comes with three compute engines:

**CPU:** General-purpose processing.

**GPU:** Graphics acceleration and parallel computing

**NPU (Neural Processing Unit):** Exceptional power efficiency for AI workloads, especially lower-intensity tasks and continuous AI workloads

## Key benefits



### Improved productivity

AI PCs enhance productivity by efficiently handling emerging AI workloads



### Extended battery life

Optimized hardware and software contribute to longer battery life



### Advanced collaboration

Optimized hardware and software contribute to longer battery life



### State-of-the-art content creation

AI assists in content generation, editing and enhancement



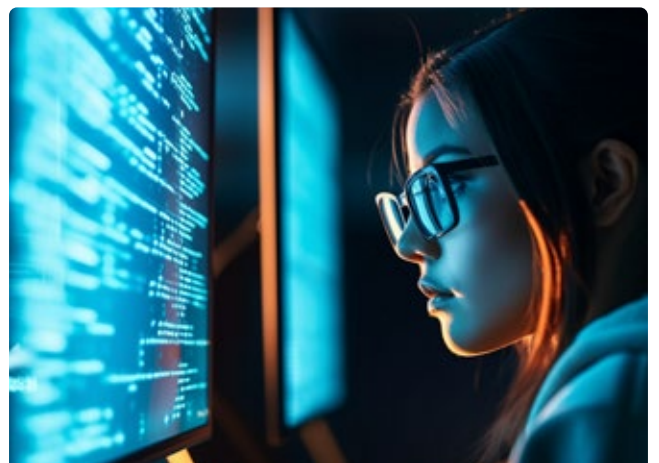
### Enhanced security and compliance

AI driven security features protect user data and ensure compliance

*In summary, AI PCs empower users with better performance, efficiency and innovative features, making them ideal for AI workloads. It also resolves significant challenges on data privacy, security and compliance.*

## AI PCs powered by HCLTech

HCLTech Fluid AI Workplace has been working with customers to build multiple use cases and solutions to enhance the productivity and experience of end users on AI PC platforms. We have been running multiple models like LLaMa, Minstal AI, Falcon Instruct, AI PC powered Workstations are now available as a part of our Flex space proposition in device as a service model. We have partnered with Dell, HP and Lenovo to provide AI workstations for our customers.



# The key solutions developed for AI PCs



## Onlooker detection

It is a crucial aspect of ensuring secure remote work. It helps safeguard users from visual hackers by providing the following features:

- On-Screen Alerts: When an unauthorized person is detected looking at the screen, the system issues an on-screen alert to the user. This warning prompts the user to take necessary action to protect sensitive information.
- Automatic Privacy Screen Settings: In addition to alerts, the technology can automatically activate privacy screen settings especially when the user is speaking on phone or clicking pictures of the screen. This ensures that confidential content remains hidden from prying eyes.



## Real time language translation

- Enable real time language translation in more than 100 languages and minimum latency on the AI PC, without any privacy or compliance challenges.



## Integration with HCLTech WorkBlaze™

- Empower agents to use NLP to gather insights from machine data and resolve end user issues quickly by enabling below capabilities.
- Ability to translate a question expressed in natural language into a query to our analytics solution HCLTech WorkBlaze™. For example, "Retrieve all devices having Outlook crashes" and "*Which users in London have audio quality issues with Teams today?*"
- Get easy platform exploration, speeding up diagnostics and remediation with actionable real-time device-based troubleshooting investigations for IT teams.

Use LLMs like CODEX & GitHub CoPilot to create automation scripts quickly in HCLTech WorkBlaze™ to enable hyper automated proactive support.



## Sentiment analysis

- Perform sentiment analysis on both chat and calls in real time and enable routing based on sentiment score.
- Use AI to do a sentiment analysis in real time for both chats and calls and provide a sentiment score.
- Auto chat and call routing based on sentiment of the user to a senior so that the experience is enhanced, and the issue is resolved quickly.
- AI Powered Analysis of negative sentiment call and chats for insights and improvements.



## Sign language detection

- AI offering to enable people who are challenged in speech and hearing can use sign language to converse on calls and meetings. The solution uses video recognition capabilities to covert sign language into text captions for other to read



## Legal assistant

- A GenAI-powered model which can act as a legal assistant where teams can upload legal documents on the application and ask questions on it. To maintain exceptional security the data is stored on-prem.



# HCLTech | Supercharging Progress™

HCLTech is a global technology company, home to more than 220,000 people across 60 countries, delivering industry-leading capabilities centered around digital, engineering, cloud and AI, powered by a broad portfolio of technology services and products. We work with clients across all major verticals, providing industry solutions for Financial Services, Manufacturing, Life Sciences and Healthcare, Technology and Services, Telecom and Media, Retail and CPG, and Public Services. Consolidated revenues as of 12 months ending December 2024 totaled \$13.8 billion. To learn how we can supercharge progress for you, visit [hcltech.com](https://hcltech.com).

[hcltech.com](https://hcltech.com)

