

HCLTech Managed Secure Access Service Edge (SASE)

Empowering networks with advanced security
and seamless connectivity



Contemporary work environments rely on a smooth and secure connectivity experience for optimal productivity

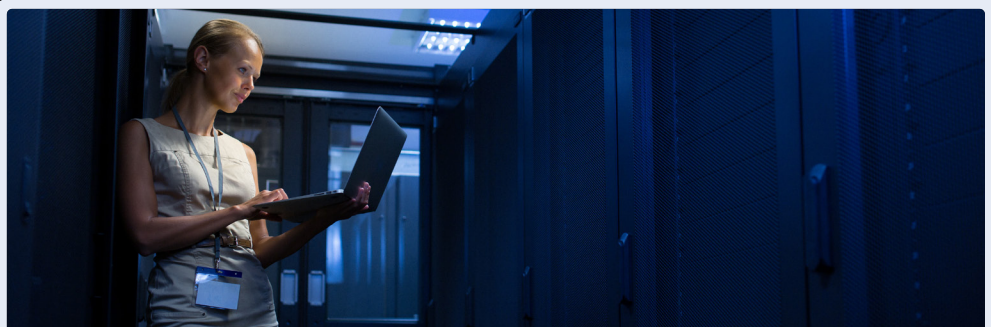
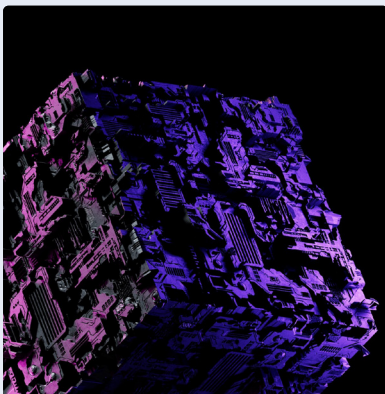
Traditionally, the data center has been the focal point of every company's network security. As businesses become more digital, the access needs of users and devices are no longer centralized in the data center. Work has evolved from a physical location to an activity that we perform. This activity is routinely carried out anywhere but in a corporate office. Users, branch offices, or Internet of Things (IoT) devices require internet access, internal SaaS, cloud apps, or branch offers to run their day-to-day businesses. These various connections to network capabilities cause a slew of secure access issues, necessitating the implementation of a unified strategy called Secure Access Service Edge (SASE).

SASE offers highly secure and consistent access no matter where users, applications, or data are located.

SASE helps organizations modernize their networks and security to achieve new levels of cost efficiency, business agility, and growth. Its platform-based approach is flexible and adaptable to any number of potential use cases. But SASE is particularly well-suited for addressing the challenges of providing access to thousands of remote users, secure branch-direct internet access, and supporting multi-cloud migration. Since these tools are now available to help with even the most complex IT challenges, implementing SASE has become a top priority for organizations. According to Gartner®,

“By 2025, 80% of enterprises will have adopted a strategy to unify web, cloud services, and private application access using a SASE/SSE architecture, up from 20% in 2021.”

Unlike point security solutions, SASE is a new architectural approach. It converges essential networking and security services such as SD-WAN, Firewall-as-a-Service (FWaaS), Secure Web Gateway (SWG), Cloud Access Security Broker (CASB), and Zero Trust Network Access (ZTNA) into a single cloud-delivered service.



*Gartner, 2022 Strategic Roadmap for SASE Convergence, 24 June 2022 | GARTNER is a registered trademark and service mark of Gartner, Inc. and/or its affiliates in the U.S. and internationally and is used herein with permission. All rights reserved.

Limitations and complexities of traditional network and security strategies



Increased operational burden and costs due to multiple-point solutions:

The lack of interoperability between siloed network solutions and security functions makes it difficult for both network and security teams to implement a unified network security strategy, which also increases the CAPEX and OPEX costs.



Latency faced by remote and branch users:

Delays occur while accessing the internet or cloud applications when traffic is backhauled from multiple branches or remote locations through the traditional hub-and-spoke architecture.



Gaps while accessing cloud-based enterprise applications:

Remote access VPNs used by organizations face numerous limitations in the modern cloud-based world, as they expose the entire network to any authorized user, thereby increasing the chances of insider threats. Moreover, the point VPN devices are expensive to deploy and complex to manage.



Inadequacy in protection from 5th generation cyber threats:

Mega attacks, or 5th generation attacks, are multi-vector in nature and can quickly and covertly spread to and from any area of the enterprise infrastructure, including networks, end-user devices, cloud workloads, IoT devices, and third parties, for example. Examples of such attacks include the WannaCry and NotPetya attacks.



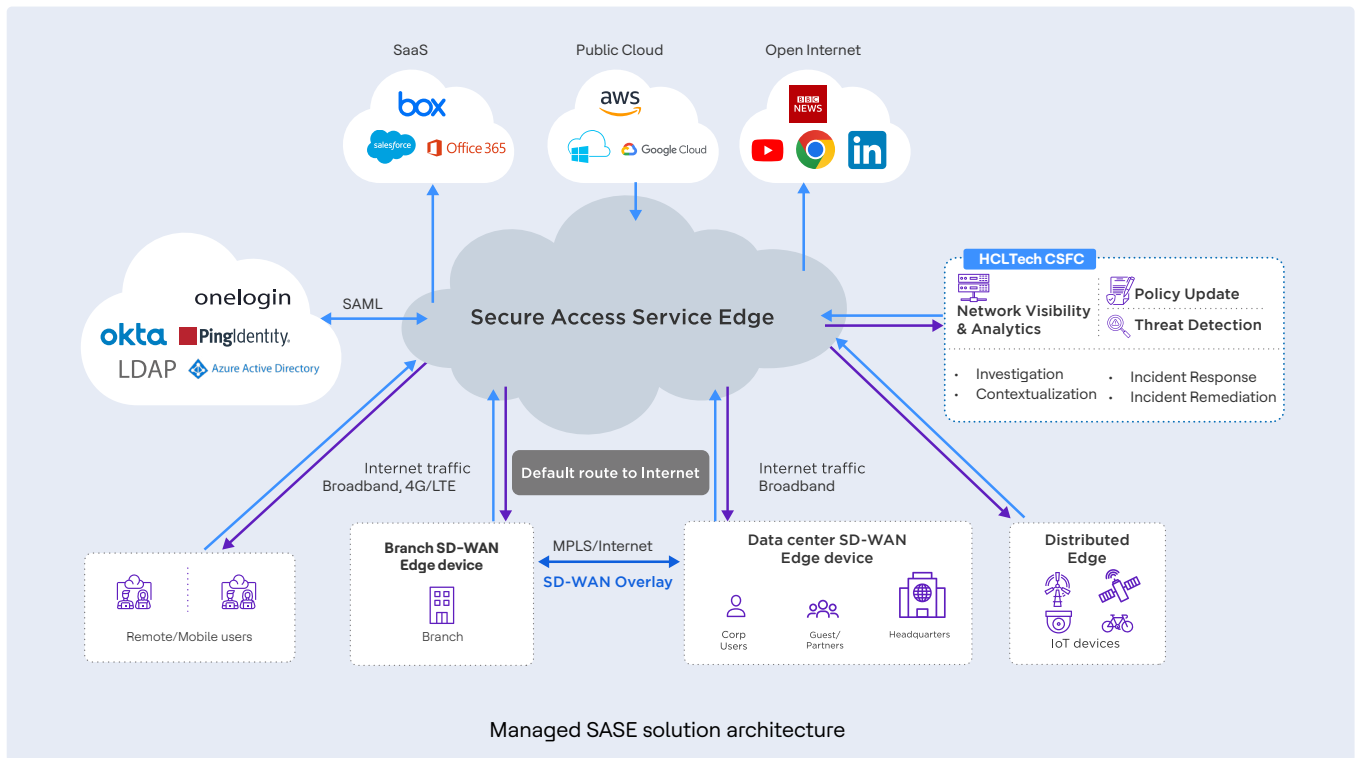
Lack of visibility and control leads to regulatory compliance violations:

Users frequently access the data and apps from new places, potentially risky networks, and devices, leaving businesses vulnerable to breaches or compliance violations because they lack visibility and control over the flow of critical data and where employees access and use it.



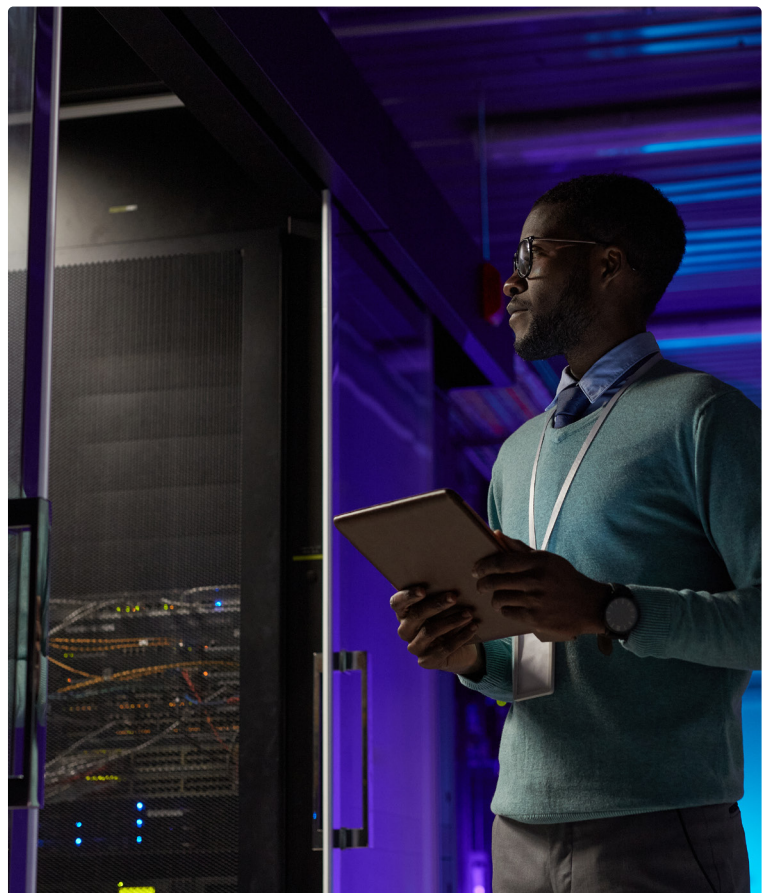
HCLTech's solution overview

HCLTech's Managed SASE is an emerging offering that combines comprehensive WAN capabilities with robust network security functions to support the dynamic, secure access needs of digital enterprises.



HCLTech CSaaS (Cloud Security as a Service) Model's CloudSec Advisory services and CloudSec Protection services help their customers develop the best security strategies and provide ongoing assistance as they embrace SASE. Our SPADE (Security Posture Assessment for Digital Enterprise) framework is an exhaustive assessment tool that complies with industry best practices. It is designed to meet the needs of an organization's cloud-based assets for security evaluation and is based on SASE criteria.

HCLTech partners with the industry leading technology partners to deliver a comprehensive managed SASE offering. This offering combines a global high-performance next-gen SD-WAN to simplify the delivery of consistent security at scale while ensuring an optimal work from anywhere experience.



HCLTech's Managed SASE is the industry's most comprehensive SASE solution, combining network security, SD-WAN, and digital experience management into a unified cloud-delivered service. This offers a fast, flexible, and reliable model for secure access to the users and devices accessing the internet, SaaS and enterprise applications from anywhere, that provides the best user experience.

Overcoming the shortcomings of legacy approaches, our services deliver next generation SASE architecture including best-of-breed capabilities like ZTNA, SWG, FWaaS, CASB, DLP, DNS Security, RBI, Digital Experience Monitoring and others which:

- Securely connects all users and all apps with fine-grained access controls to dramatically reduce the attack surface
- Provides behavior-based continuous trust verification after users connect
- Provides deep and ongoing security inspection to ensure all traffic is secure without compromising performance or user experience

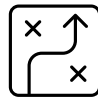
- Brings complete visibility into the endpoints, network & apps performance across all locations, allowing proactive detection and troubleshooting of user issues
- Secures all apps, all the time, including premises-based, internet-based, legacy, SaaS, and modern/ cloud-native apps, from a single product
- Supports multiple use cases' scenarios, whether secure access is required from branch/ HQ users, roaming users, or from unmanaged or IoT devices

Our services facilitate the organizations with zero-trust based application access for users and devices, and safe outbound user traffic to the internet or SaaS apps. It provides a secure link across all physical and virtual sites, clouds, and networks. Identity service providers such as Okta, Azure AD, Ping Identity, etc., may all be integrated with the SASE service. This architecture, which is supported by HCLTech Managed Services for deployment and support, will assist clients in ensuring security while improving user experience.



Service catalog

HCLTech's Managed SASE enables enterprises to seamlessly adopt a SASE-based architecture and move to a cloud-led unified network and security architecture. HCLTech's tight integration with the major SASE solution partners provides a unified security solution designed for enterprise-wide implementation. We offer our services across the following:



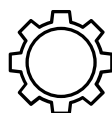
Strategy and architecture

- HCLTech enables clients to start on right foot by performing As-is state analysis of their existing security and network posture. Equipped with the visibility on current state, HCLTech provides a risk prioritized SASE roadmap
- Design and finalize SASE adoption roadmap including timelines



Transformation and integration

- Implement SASE strategy through the right mix of network & security controls
- Integration of security service layer with existing SD-WAN infrastructure
- Integration of IAM platform with SASE setup
- Integration with Threat Detection & Response platform
- Consolidation and streamlining of network and security policies
- Integration of all remote users, branch offices with SASE security components



Managed services

- Continuous management of SASE platform
- Updating SASE policies:
 - Access policies
 - Data exfiltration
 - Remote access
 - Identity policies
- 24x7 monitoring and threat detection
- Incident response and migration

Benefits of SASE adoption

- Reduces complexity and costs due to numerous point solutions
- Improves performance and eliminates latency
- Enables new digital business scenarios
- Offers secure access for a mobile workforce, branch users, and protects from unmanaged and IoT devices
- Provides ease-of-use and transparency for users and enhances use experience
- Moves inspection engines closer to the sessions
- Lowers operational overhead
- Enables zero-trust network access
- Delivers policy-based security services
- Eases operation efforts by providing a single management plane

Key differentiators

- HCLTech leverages its home-grown enterprise assessment framework, SPADE, to identify the areas of the most effective imperatives, and delivers a transformation roadmap around SASE-centric architecture
- HCLTech offers best-in-class managed SASE solutions, services, and flexible consumption models
- An agile service delivery model, innovation, and scale to meet enterprise business needs
- Through partnering with industry-leading vendors, we provide highest availability of SASE solutions to our customers with 99.999% uptime.
- HCLTech's experienced team of consultants comes with rich expertise in strategic and tactical cybersecurity program evaluation and strategy development

Our SASE partners



HCLTech | Supercharging Progress™

HCLTech is a global technology company, home to more than 219,000 people across 60 countries, delivering industry-leading capabilities centered around digital, engineering, cloud and AI, powered by a broad portfolio of technology services and products. We work with clients across all major verticals, providing industry solutions for Financial Services, Manufacturing, Life Sciences and Healthcare, Technology and Services, Telecom and Media, Retail and CPG, and Public Services. Consolidated revenues as of 12 months ending June 2024 totaled \$13.4 billion. To learn how we can supercharge progress for you, visit hcltech.com.

hcltech.com

