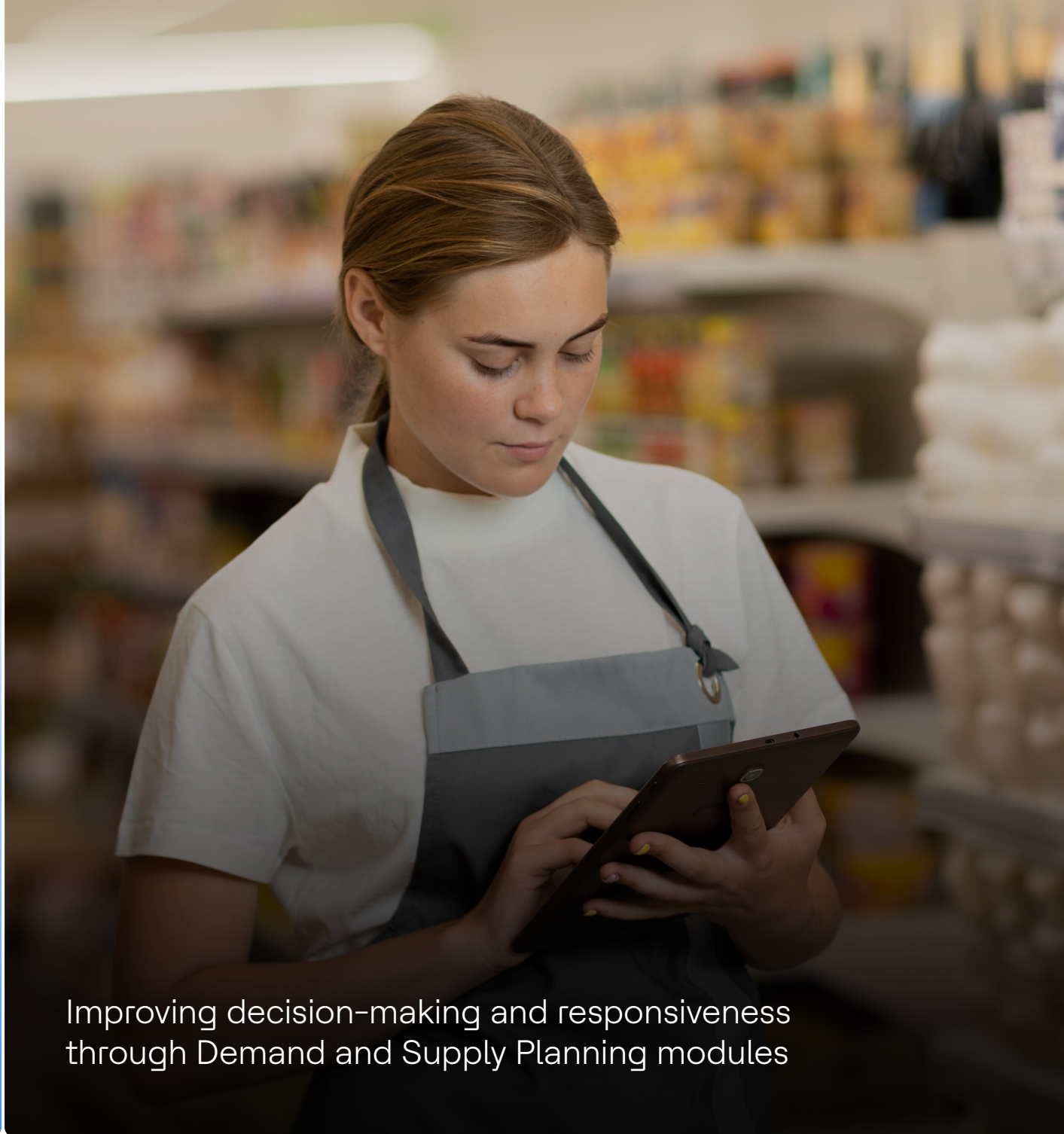


Enhancing global **supply chain management** with Kinaxis Rapid Response



Improving decision-making and responsiveness
through Demand and Supply Planning modules

This client is a UK based FMCG company who wanted to implement Kinaxis Rapid Response offerings, specifically the Demand Planning and Supply Planning modules. Their goal was to enhance global supply chain management, improve decision-making processes, and respond quickly to disruptions. Through collaboration with HCLTech, the client successfully implemented the modules, resulting in improved forecast accuracy, streamlined processes, and enhanced decision-making capabilities. The solution helped the client's journey towards optimizing their supply chain management on a global scale.

The Objective:

Implementing Kinaxis Rapid Response for enhanced global supply chain management

The client wanted to Implement Kinaxis Rapid Response offerings such Demand planning and supply planning module across

their global organization as they wanted quickly react to Supply chain disruptions and improve their decision-making process.

The Challenge:

Enhancing forecast accuracy and data assessment in Demand Planning

The client faced several challenges that needed to be addressed. Firstly, they required the development and delivery of complex solutions in Demand planning to enhance their forecast accuracy. They also needed decision-making widgets and dashboards to assess live data in the SCP

module. Disaggregating financial invoiced values and shipment invoiced values was a key requirement for forecast maintenance. Additionally, they needed a robust solution for manual sales data upload in regions without any accelerators.

The Solution:

Supporting Demand and Supply Planning implementation with comprehensive features

To tackle these challenges, the HCLTech team provided support for the implementation of the Demand planning and supply planning modules, collaborating with the Kinaxis team. They actively participated in Scrum meetings, taking ownership of user stories from design to delivery. The team developed solutions, performed unit testing, and moved resources to QA environments.

They also assisted with integration requirements, data source mapping, data modeling, alerts, and automation chains. Technical and business validations were conducted to ensure smooth production movement.

The Impact:

Successful delivery of complex solutions and improved forecast accuracy

The implemented solutions had a significant impact on the client's operations. They successfully delivered complex solutions, enabling the client to meet hypercare and go-live targets on time. The client gained the capability to compare aggregated and disaggregated financial invoiced quantities across regions using their local currencies and desired unit of measurement. As a result, the statistical forecast accuracy improved. Furthermore, the team provided a seamless solution for manual sales data upload in regions without accelerated sales systems, simplifying the process for the client.

