

iSAM

Maintenance Operations Planning



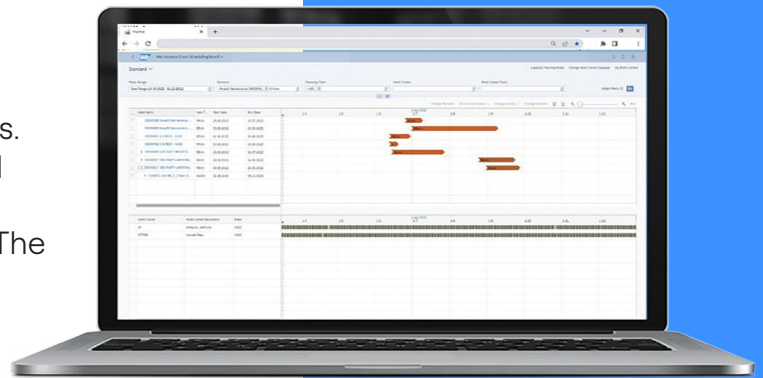
iSAM is a collection of products harnessing the latest SAP technologies to provide world-class intelligent service and asset management capabilities supporting the specific business challenges of complex asset Maintenance Repair and Overhaul (MRO).

iSAM products can be adopted individually to solve specific business challenges directly by enhancing and integrating with the SAP S/4HANA Enterprise Asset Management solutions. They can also be adopted as a suite of capabilities providing integrated maintenance processes. iSAM can also be adopted alongside the iMRO Digital Core to provide a comprehensive set of MRO capabilities.

Visualize and update detailed work schedules for complex maintenance

HCLTech iSAM Maintenance Operations Planning enables maintenance and production planners to visualize and update detailed work schedules for large complex maintenance events where project planning and maintenance objects are combined to define the maintenance event.

Large maintenance events such as facility shutdowns, turnarounds and large complex maintenance packages on assets such as aircraft and complex components can span multiple weeks and include thousands of tasks. These types of events are often managed and scheduled using a combination of project planning and maintenance planning objects. The detailed planning and scheduling of these events are essential to ensure that they are delivered on time and on budget.



HCLTech iSAM Maintenance Operations Planning displays **maintenance planning** events (revisions), network and network activities, sub-network data and related work orders in a Gantt chart. Each Gantt chart is combined with an overview of the work center capacity utilization, enabling capacity overloads to be easily detected. It also displays detailed data, including critical planning alerts and object statuses. The required update and edit actions for resolving the planning alerts are provided directly within the application.

Benefits

A comprehensive suite of graphical planning tools

Large maintenance events need detailed planning and close monitoring to ensure that they are delivered on time and within cost limits. HCLTech iSAM Maintenance Operations Planning provides a suite of planning Gantt charts and multiple update actions covering key maintenance planning objects.

Insight to action alerts

HCLTech iSAM Maintenance Operations Planning enables maintenance planners to identify work center capacity overloads quickly. The **graphical planning tools** support drill-down and navigation to related apps to view details and take appropriate resolution actions.

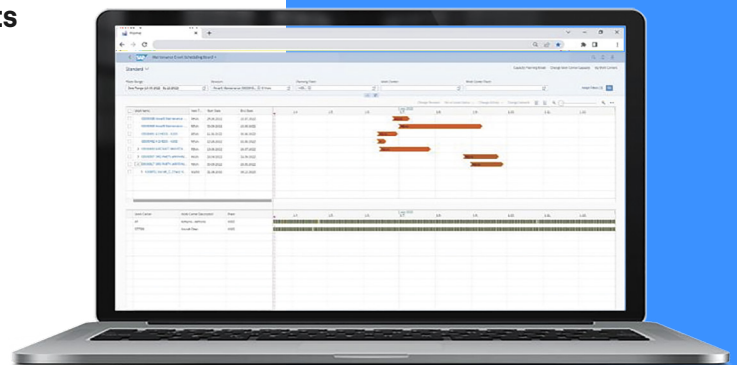
Full integration to related apps

HCLTech iSAM Maintenance Operations Planning fully integrates with HCLTech iSAM Maintenance Foundation and HCLTech iSAM Maintenance Operations Insights via drill-down and inter-app navigation.

Features

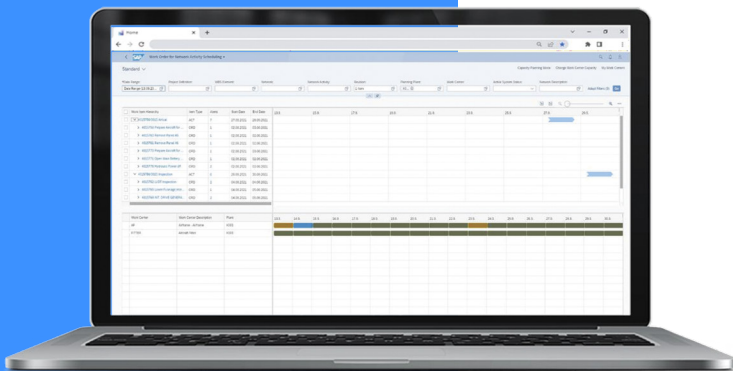
Review overall scheduling of maintenance events

The **Maintenance Event Scheduling Board** app shows a high-level view of maintenance events (revisions) and related work items (network activities and work orders) in a Gantt chart. The lower part of the chart displays a capacity planning view for the user's work centers. Work items and capacities can be updated to avoid capacity overload.



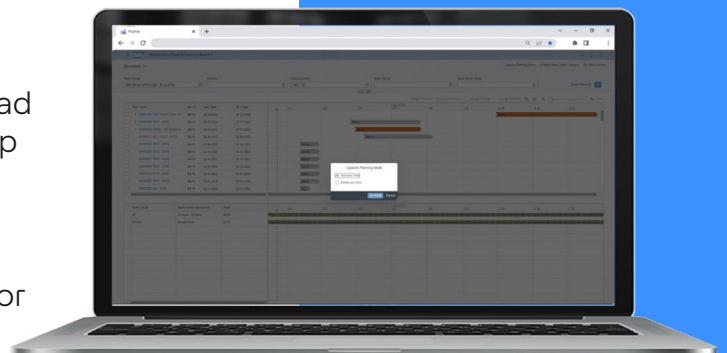
Review detailed planning of a single maintenance event

The **Work Order Scheduling Board** app shows an overview of the network activities occurring in a single maintenance event (revision). The lower part of the chart displays a view of the capacity planning activities for the user's work centers. Work items and capacities can be updated to avoid capacity overload.



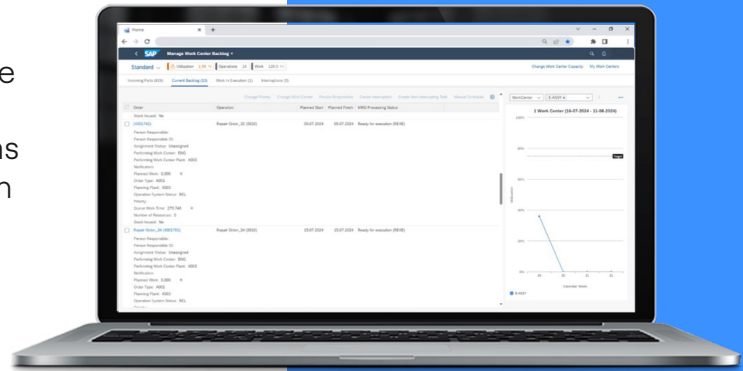
Two-load capacity models

There are two options for modeling capacity load on both the Maintenance Scheduling Board app and the Work Order Scheduling Board app. "Standard" mode uses work order operation scheduling parameters, whereas "Distributed" mode schedules in accordance with the superior network activity.



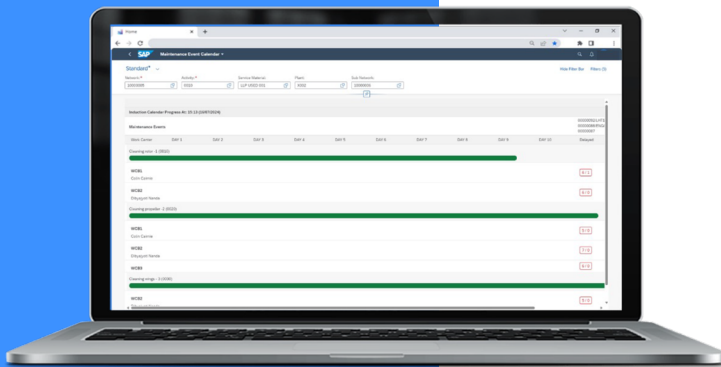
Review current tasks for your work center

The **Manage Work Center Backlog** app shows the status of active operations for the user's work center(s). Depending on the status, the work items show as Incoming parts (awaiting movement or in transit from the preceding work center), Current backlog (ready for execution), Work in execution or as Interruptions. A side panel on the right shows the work center capacity utilization.



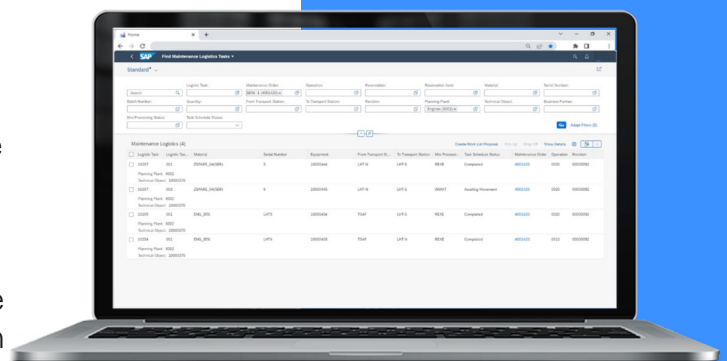
Review progress of maintenance tasks against their planned milestone dates

The **Maintenance Event Calendar** app shows the status of maintenance operations in the context of the main phases of a maintenance event, as defined in the corresponding standard network, which in turn define the overall turnaround time (TAT) of the event. Tasks that are late are immediately highlighted with the ability to navigate directly to the delayed operations.



Review status of internal logistics tasks

The **Find Maintenance Logistics Task** app shows the location of parts under maintenance within a maintenance facility. The app shows logistics tasks which track the movement of parts between transport stations, which are located close to the work center or store where the parts are required. As parts are picked up, in transit and dropped off at their destination, the status of the logistics task is updated at each stage and visible in the app.





About HCLTech's SAP Practice

To get the best return on your digital investments, you need a partner that doesn't just do SAP right, but does it better. Our SAP practice works seamlessly with HCLTech's digital consulting, engineering services, IoT WoRKs™ and cloud infrastructure practices to design, implement and support tomorrow's integrated, intelligent solutions today. An SAP Global Strategic Services Partner, our team of 12,500+ consultants leverages insights, advanced accelerators and industry-acclaimed frameworks to deliver award-winning services from local offices across Europe, Africa, Asia and the Americas.

<https://www.hcltech.com/sap>

HCLTech | Supercharging
Progress™

BI-104223706708856570-EN00GL

hcltech.com