

SAP Security Cockpit

Housekeeping maintenance toolkit



SAP SECURITY COCKPIT








All SAP estate security operations and emerging business risks lead to an increase in the complexity of system housekeeping activities. Complexity in SAP security maintenance activities in an enterprise is fueled by:

- Manual processes, tracking, and reporting
- DevSecOps-driven decision-making
- New security vulnerabilities and fixes
- Identified risks and timely mitigations
- Complex landscape and its integrations

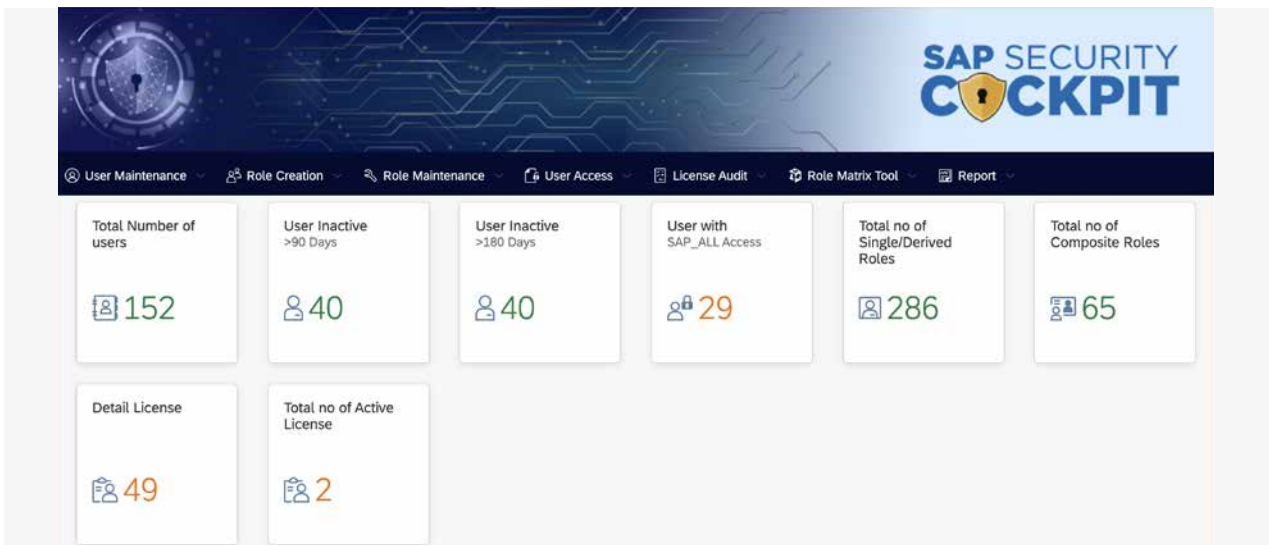
HCL's Security Cockpit tool can help your company handle security housekeeping activities effectively and efficiently. The tool is designed as native ABAP with an easy-to-use Fiori user interface.

HCL's Security Cockpit tool can be deployed centrally, where all reporting for connected systems is managed. The tool can be also deployed on a stand-alone system. For customers who do not have the requisite platform, this tool has an SAP GUI-based interface.

Features and Functions

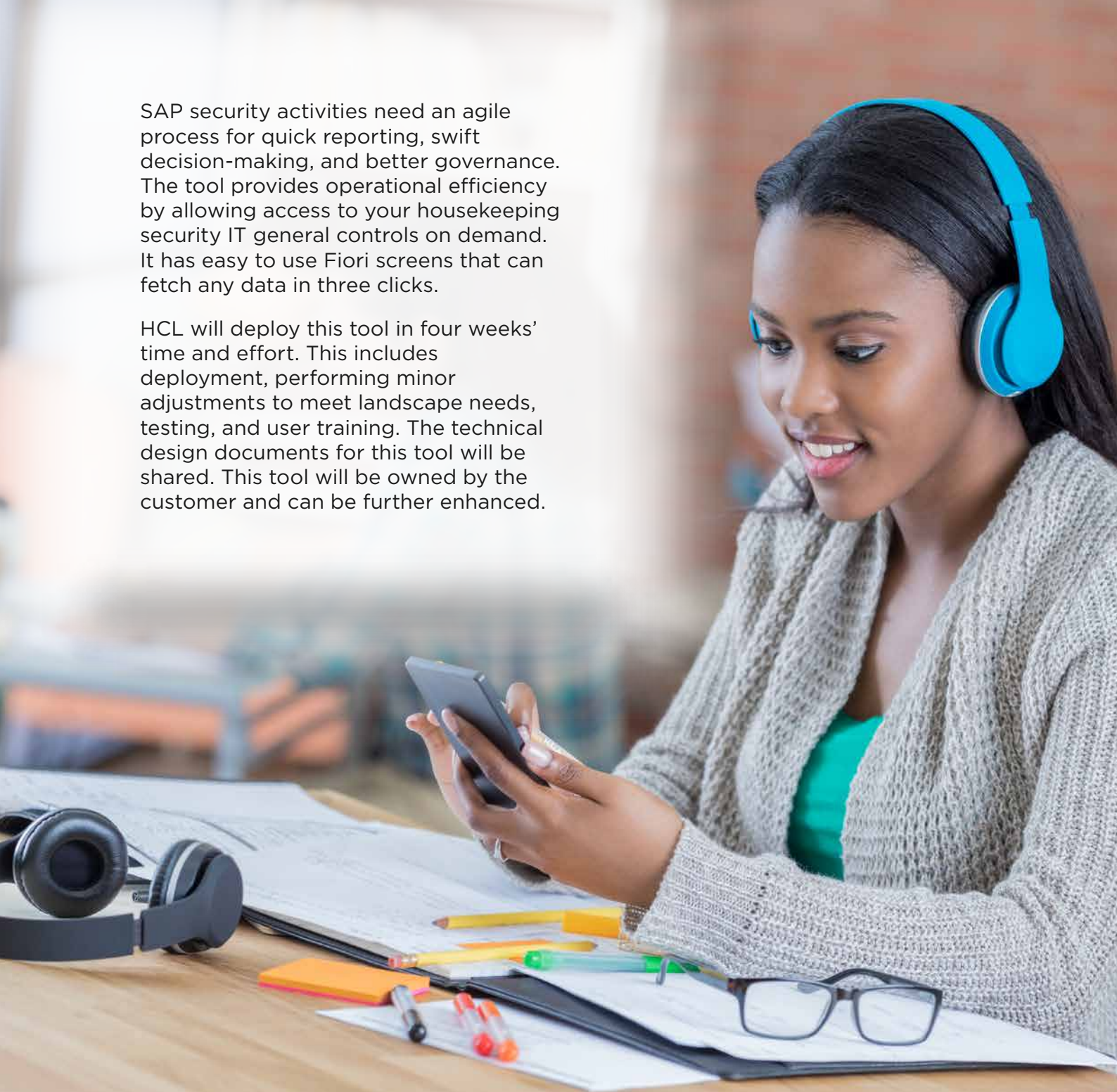
<p>User Maintenance</p> 	<p>This menu function includes the following functionalities:</p> <ul style="list-style-type: none"> • Lock inactive users who do not log in to the system for 90 days. (Configurable) • Delete inactive users who have no login to the system for 180 days. (Configurable) • Expire/lock users whose HR master data status is set to retire or withdraw
<p>Role Creation</p> 	<p>This menu function will assist in overcoming the manual task of:</p> <ul style="list-style-type: none"> • Creation of derived role using master role • Modification of organization level in newly created derived role
<p>Role Maintenance</p> 	<p>This menu function include the following options:</p> <ul style="list-style-type: none"> • Addition of organization level in the existing derived role • Deletion of role from the system
<p>User Access</p> 	<p>This menu function includes the following functionalities:</p> <ul style="list-style-type: none"> • Role access analysis: Check for unassigned single, derived, and composite roles • Audit control analysis: Check the audit controls that a security consultant runs • SOD analysis at T-Code: Check SOD conflict at the transaction level for a user and role • SOD analysis at authorization. object: Check SOD Conflict at authorization object • User access to profile SAP_ALL: Report assignment of SAP_ALL profile in the system
<p>License Audit</p> 	<p>This functionality provides a simple report for existing user license assignments and their distribution. It manages SAP license usage with an auto-locking feature for inactive users.</p>
<p>Role Matrix</p> 	<p>This menu function can be utilized for security build activities during new project implementation and rollout. It provides functionality for:</p> <ul style="list-style-type: none"> • Custom role creation • Role modification • Business process role mapping • Mass user role assignment
<p>Report</p> 	<p>This function generates a SAP Security Assessment report of the evaluated system that can be sent as a PDF attachment in an email. As this is a system-generated report, it can be referred to as review evidence. It provides detailed data in the form of annexures. This report lists the following data:</p> <ul style="list-style-type: none"> • Number of users and roles • User having SAP_ALL profile • Inactive users for 90/180 days • User license assignment list • Users with HR master data status is set to retire or withdraw • SOD Analysis

HCL Security Cockpit Home Page



SAP security activities need an agile process for quick reporting, swift decision-making, and better governance. The tool provides operational efficiency by allowing access to your housekeeping security IT general controls on demand. It has easy to use Fiori screens that can fetch any data in three clicks.

HCL will deploy this tool in four weeks' time and effort. This includes deployment, performing minor adjustments to meet landscape needs, testing, and user training. The technical design documents for this tool will be shared. This tool will be owned by the customer and can be further enhanced.



Contact: SAP@hcl.com

HCL

HCL Technologies empowers global enterprises with technology for the next decade today. HCL's Mode 1-2-3 strategy through its deepdomain industry expertise, customer-centricity and entrepreneurial culture of ideapreneurship™ enables businesses transform into next-gen enterprises.

HCL offers its services and products through three business units: IT and Business Services (ITBS), Engineering and R&D Services (ERS) and Products & Platforms (P&P). ITBS enables global enterprises to transform their businesses through offerings in areas of Applications, Infrastructure, Digital Process Operations and next generational digital transformation solutions. ERS offers engineering services and solutions in all aspects of product development and platform engineering while under P&P, HCL provides modernized software products to global clients for their technology and industry specific requirements. Through its cutting-edge co-innovation labs, global delivery capabilities and broad global network, HCL delivers holistic services in various industry verticals, categorized under Financial Services, Manufacturing, Technology & Services, Telecom & Media, Retail & CPG, Life Sciences & Healthcare and Public Services.

As a leading global technology company, HCL takes pride in its diversity, social responsibility, sustainability and education initiatives. As of 12 months ending on March 31, 2021, HCL has a consolidated revenue of US\$ 10.17 billion and its 168,977 ideapreneurs operate out of 50 countries.



www.hcltech.com

For more information, visit www.hcltech.com