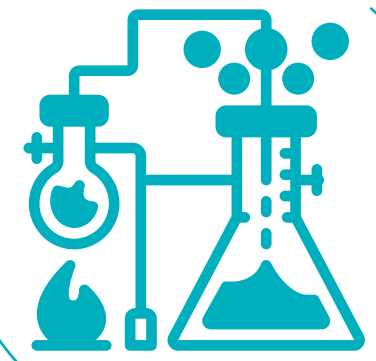


# Network Transformation of a Global Pharmaceutical Company

## Client Background

A research-based, global pharmaceutical company headquartered in Germany with presence across EMEA, APAC, and Latin America. The client had all the workloads running in on-premises data center and decided to move to Microsoft Azure.



## Challenges

- With increasing global presence, the existing network infrastructure of the client became sluggish, slow, and difficult to manage, resulting in huge network performance issues, impacting the operational efficiency and overall business performance.
- The client was using traditional VPN gateway setup to connect to a centralized data center as well as other remote sites. This approach had severe scalability limitations.
- Cloud-bound network traffic from multiple branches was traversing via on-premises data center resulting in extremely in-efficient network infrastructure.
- Huge capex and opex cost to the client in adopting high scalability to their networks considering their current network infrastructure.

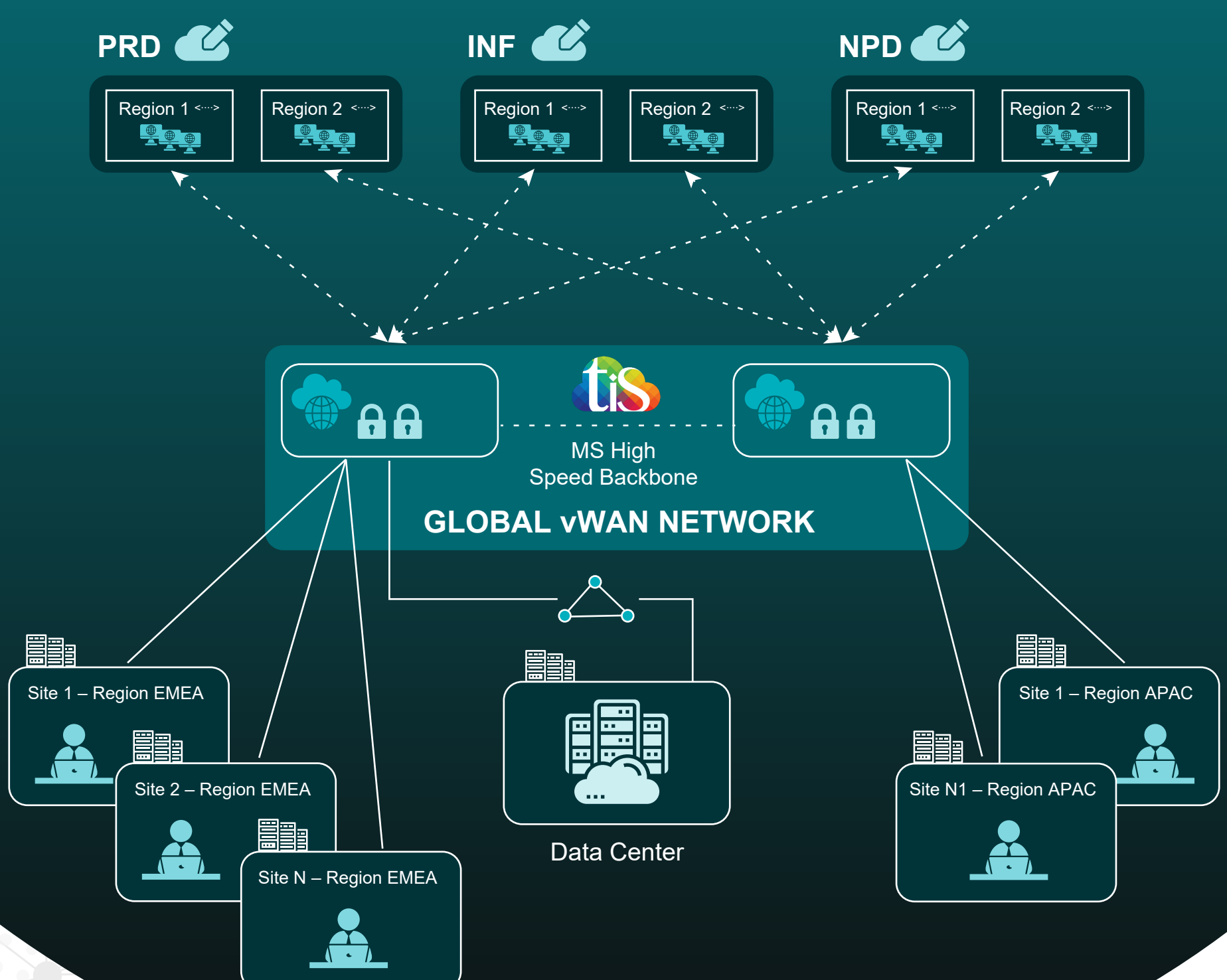
## HCL Technologies' Solution

Tried, tested and proven TIS Agile Connect SmartNet Framework was deployed to address high speed CSP backbone network requirements

Consulting and assessment services helped the client in understanding the need of branch-to-cloud connectivity and in enabling cloud and internet first network architecture

HCL designed the entire vWAN solution and migrated client's branch sites to vWAN architecture

## Proposed Network Design



## Benefits

### Faster and scalable networks

HCL's TIS Agile Connect SmartNet framework allowed the organization with optimized branches by establishing fast, flexible and on-demand network connectivity.

### Network performance

Inter-region traffic traversing through high-speed Microsoft backbone ensured high-performance network management.

### Agile Ops

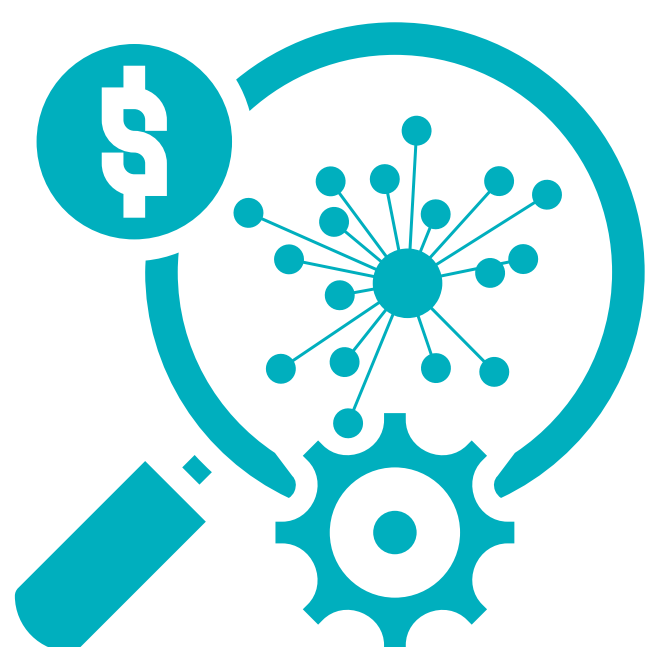
Management and control of the entire network architecture using a single pane of glass helped the client in maintaining their network infrastructure centrally, thus reducing the day 2 operations overhead.

### 24\*7 network availability

HCL's TIS ensured seamless network solutions availability anytime, anywhere.

### Cost saving

Significant reduction in cost by eliminating dependencies on procuring expensive MPLS bandwidth and moving towards flexible pay-as-you-go model.



For any vWAN related queries or vWAN integration with SDWAN, please feel free to reach out to us at [Contact.NGN@hcl.com](mailto:Contact.NGN@hcl.com)