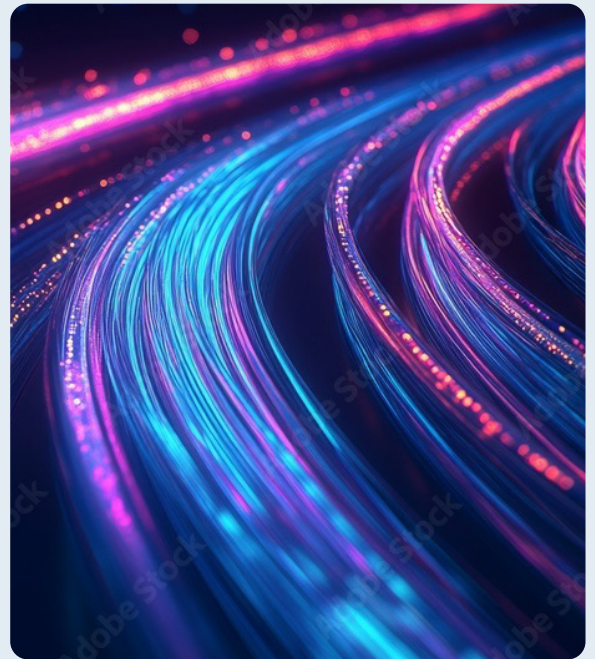


Cognitive Infrastructure Services

A resilient, agile and scalable digital foundation for enabling GenAI adoption at scale

GenAI has emerged as a transformative force across various business domains. However, to unlock the boundless creativity with Generative AI, you need a resilient, agile and scalable digital foundation and access to this space's ever-increasing ecosystem.

HCLTech helps enterprises in accelerate their GenAI adoption and overcome transformation challenges through a comprehensive suite of services under its Cognitive Infrastructure offerings. This includes a wide range of services, from AI advisory to platform and infrastructure development, as well as efficient operations and management.



Benefits of HCLTech Cognitive Infrastructure Services

Access to a diverse partner ecosystem

Reference architectures and validated frameworks to support GenAI adoption

HCLTech IPs and accelerators for managing cognitive infra landscape

Business case and total cost of ownership (TCO) analysis

Consulting services to facilitate large-scale GenAI adoption



Our Accelerators and IPs

ePACE	Accelerator to build a cognitive platform on public cloud
AEX *	Provides end-to-end automated service management
HCL MyCloud *	Hybrid cloud lifecycle management
HCL MyXalytics *	AI-driven hybrid cloud FinOps visibility and insights
HCL BigFix *	Hybrid endpoint management platform

*HCLSoftware IPs

Partner Ecosystem



Why HCLTech

- HCLTech is positioned as Leader in the 2023 Gartner® Magic Quadrant™ for Data Center Outsourcing and Hybrid Infrastructure Managed Services, Worldwide
- HCLTech is rated as a Leader in ISG Provider Lens™ - Analytics Services, U.S. 2023
- HCLTech is recognized with a Customers' Choice distinction in the 2023 Gartner® Voice of the Customer report for Data Center Outsourcing and Hybrid Infrastructure Managed Services, Worldwide
- 100+ GenAI use cases
- Faster time-to-market through cloud native GenAI labs, IPs and frameworks
- Pool of AI engineers, data scientists and infra platform SMEs

