

The future of design systems with AI



Table of contents

Introduction	3
From static style guides to AI-driven design systems	3
Evolution from print-based guidelines to dynamic frameworks	4
Role of AI in real-time component updates	5
AI tools reshaping UX workflows	6
Figma plugins for layout and alignment automation	6
GenAI for UI copy and documentation drafting	7
DALL-E and visual asset generation	8
Automating design system components with AI	9
AI-generated accessible color palettes (WCAG compliance)	9
Reusable UI elements with auto-update capabilities	9
AI-powered documentation for component libraries	10
Case study - AI-generated data visualization components in Figma	11
Prompting AI for configurable chart variants	11
Autogenerating usage documentation and accessibility labels	12
Reducing design time from months to weeks	13
Balancing human creativity with AI automation	13
Human validation of AI outputs for cultural sensitivity	13
Collaborative workflows between designers and AI	13
Empathy and contextual awareness in design decisions	14
Ethical considerations in AI-driven design systems	14
Bias in training data and inclusive design risks	14
Transparency in AI contributions to design	15
Maintaining trust through human oversight	15
Conclusion	15
Key takeaways	15
References	16
Author information	17

Introduction



Source: Getty images

AI is revolutionizing the way we build and utilize design systems – dramatically accelerating processes such as color palette generation by over 80%, while preserving brand identity and enhancing design accessibility. A design system can be defined as a structured collection of reusable UI components and design guidelines. It has become an essential framework for ensuring consistency and efficiency across digital products.

In contrast, traditional manual design and development workflows often involve repetitive tasks and operational bottlenecks, which slow down productivity and make it difficult to maintain consistency at scale. The integration of AI into design workflows is driving measurable impact. AI is automating routine, time-consuming tasks and optimizing design operations that once required significant human effort. This evolution reflects a seamless merging of human creativity with AI-enabled capabilities.

AI-powered tools can interpret complex structural relationships and dependencies within design systems, enabling more accurate outputs and enhanced team collaboration. As a result, UI/UX designers are able to accelerate delivery timelines without compromising on quality or consistency. Another major advancement enabled by AI in design systems is improved accessibility compliance. AI can automatically assess color contrast and ensure adherence to Web Content Accessibility Guidelines (WCAG). Moreover, AI-generated color palettes can introduce complementary hues with optimal contrast ratios, particularly useful in data-dense applications such as dashboards.

At the intersection of AI and design systems, we are witnessing a fundamental transformation in both design methodologies and outcomes.

From static style guides to AI-driven design systems

Design systems have evolved through distinct phases since their inception, advancing from basic style documentation to more sophisticated frameworks that support modern digital product development. This evolution reflects both technological progress and a fundamental shift in

how design teams approach consistency, scalability and efficiency across platforms.

Evolution from print-based guidelines to dynamic frameworks

Early design systems began as static style guides, much like printed manuals outlining core visual elements such as fonts, color palettes and spacing rules. While they helped maintain visual consistency, these guides had clear limitations. Updates were manual and time-consuming, often leading to outdated references and inconsistencies across teams and products.

As digital products became more complex and the pace of delivery accelerated, these static systems could no longer keep up. The growing need for flexibility, speed and precision gave rise to more dynamic and responsive frameworks, paving the way for today's AI-enhanced design systems.

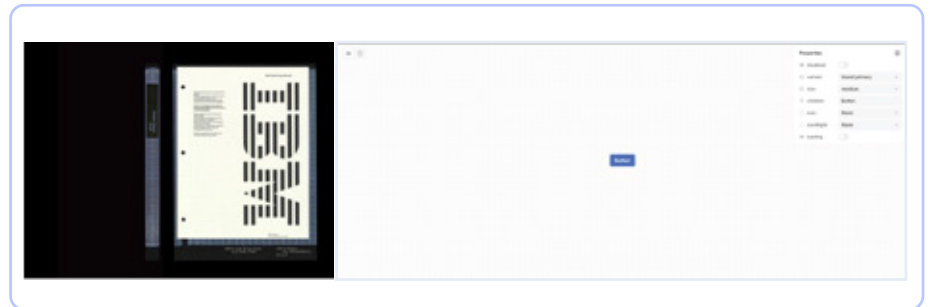


Image (Left) represents IBM Graphic Standards Manual from 1969 to 1987
Image (Right) represents a living coded system of a button component from subframe.com

The early 2000s marked a pivotal transition as web teams began publishing online style guides and pattern libraries to maintain consistency across their digital properties. A notable example is Yahoo's public Design Pattern Library, introduced around 2006, which documented best-practice solutions for common web interactions and inspired many organizations to adopt similar approaches. These early digital libraries established the principle of consistent user experience and laid the groundwork for more comprehensive and scalable design systems.

The introduction of CSS frameworks such as Twitter's Bootstrap, first released in 2011, represented a significant advancement. By offering ready-made grid systems, UI components and standardized styling defaults, these frameworks enabled broader adoption of foundational design systems and significantly reduced the effort required to deliver consistent web experiences. As these practices matured, the documentation of design standards evolved in parallel. Style guides transitioned from static PDF documents to living, web-based resources, often generated directly from the same codebase as the product itself.

This shift went beyond a change in format; it reflected a growing recognition that design had become a systematic, repeatable process capable of scaling across teams, rather than a purely isolated creative activity.

During the 2010s, design systems progressed further, evolving from documentation-centric assets into fully coded, living systems.

Organizations began treating design systems as products in their own right, supported by dedicated ownership, versioning and ongoing maintenance. Tools such as Storybook, enabled interactive component libraries, while automated build pipelines allowed for tighter integration with production codebases. As a result, the “source of truth” moved away from static documentation toward coded component libraries, with design tools increasingly synchronized to ensure alignment between designers’ intent and developers’ implementation.

Role of AI in real-time component updates

AI is transforming the way design systems function by automating time-intensive tasks and enabling seamless, real-time updates across platforms. One of the most impactful applications lies in the management of design tokens – core elements such as color palettes, typography and spacing – that define a product’s visual identity and ensure consistency. With AI integration, updates to these tokens can be implemented system-wide with minimal manual intervention. For example, if a designer updates a primary color, AI can instantly propagate that change across all instances, maintaining uniformity across products and interfaces.

AI also enables continuous monitoring of design changes in real time, analyzing data flows and predicting where updates are needed. This fosters a connected and responsive design ecosystem, where modifications are automatically applied across components and platforms, often resolving potential inconsistencies before they surface. Organizations leveraging AI within their design systems have reported up to 50% faster prototyping compared to traditional methods, highlighting the measurable efficiency gains AI brings to modern design operations.

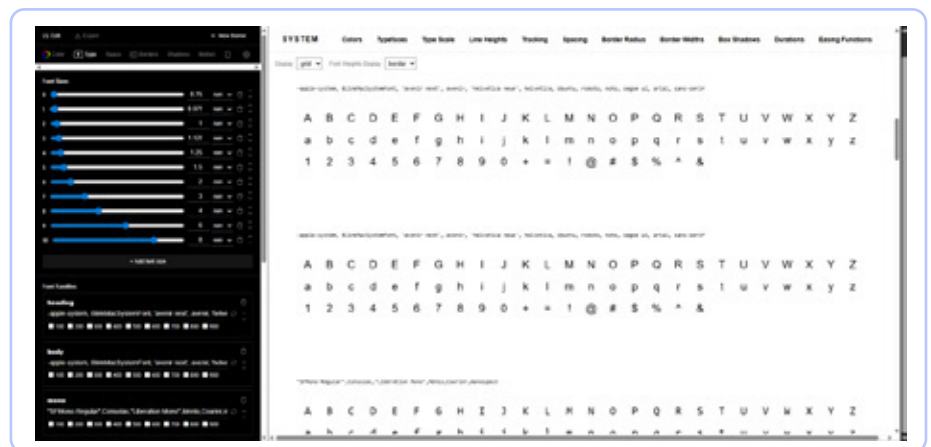


Image represents Typeface configuration using components.ai.

AI plays an increasingly vital role in ensuring accessibility compliance and upholding design system standards. By automatically evaluating color contrast ratios, AI can flag potential accessibility issues early, well before they reach end users. It also assists with tasks such as asset tagging, layout optimization and design suggestions, allowing teams to spend more time on creative problem-solving rather than routine upkeep. Beyond simple synchronization, AI is now capable of generating code-backed components that adhere to predefined design system rules. This ensures that AI-assisted outputs align with established development practices and visual standards, maintaining consistency as products and systems scale. As AI continues to mature, design systems are evolving from passive libraries into active, intelligent collaborators within the design process. With increasing

accuracy and contextual awareness, AI agents will be able to handle repetitive tasks — such as component updates, design reviews and even responding to support queries — freeing design teams to focus on higher-level strategic and creative initiatives.

AI tools reshaping UX workflows

UX design workflows are undergoing a significant transformation as AI-powered tools enhance both operational efficiency and creative output. This shift is especially evident in how design systems are built, maintained and applied across cross-functional product teams.

Figma plugins for layout and alignment automation

Figma has emerged as a central platform in AI-enhanced design, offering a growing ecosystem of plugins that streamline routine tasks and accelerate workflow. Plugins focused on layout and alignment automation leverage machine learning to eliminate the need for time-consuming manual adjustments. Tools such as Auto Layout and Auto-Responsive handle responsive design elements automatically, while the Alignmate plugin ensures precise organization of layers and components. These automations significantly reduce the cognitive load on designers, allowing them to focus on higher-order decisions around usability, interaction and overall composition, rather than spending time on pixel-level refinements.

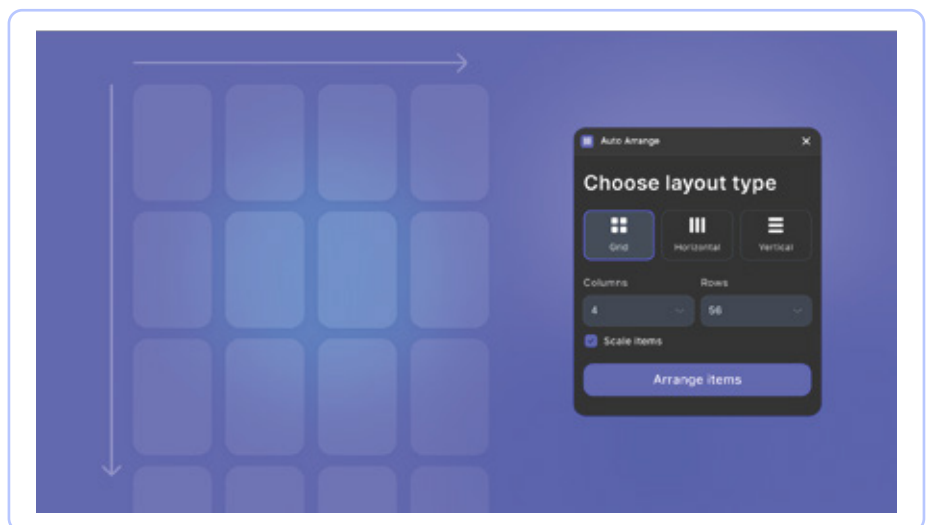


Image represents a screenshot of Alignmate Plugin

Layout Lab marks a significant advancement in the field, transforming how designers tackle complex interface layouts. Tools like these enable what many in the industry refer to as a “breadth-first search” approach to design exploration, allowing teams to rapidly experiment with multiple layout configurations without committing to detailed implementation early on. Studies show that teams leveraging AI-powered layout tools report up to 50% faster prototyping compared to traditional workflows.

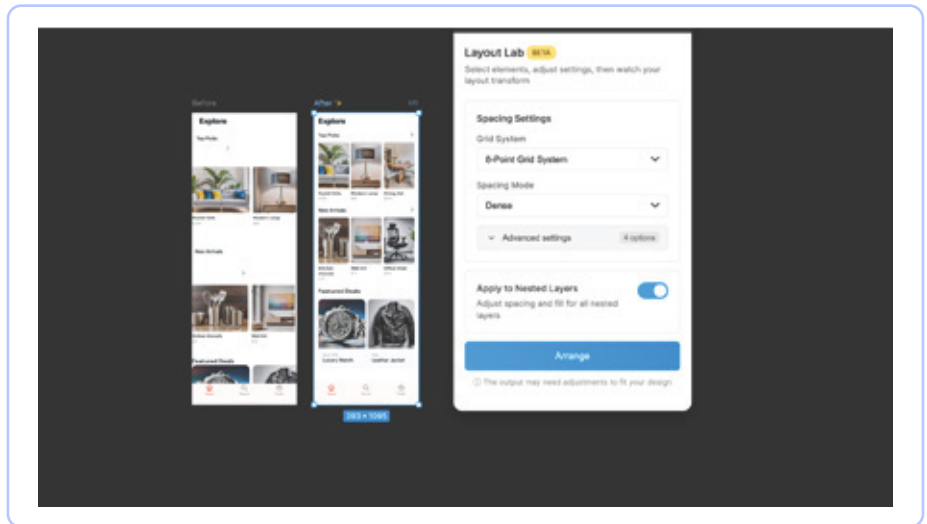


Image represents a screenshot of Layout Lab Plugin

The impact of AI integration extends well beyond time savings. These tools are fundamentally reshaping how designers approach their work, shifting the focus from manual pixel-level adjustments to ideation and strategic decision-making. This evolution has led to the emergence of a new hybrid role: the design engineer. Positioned at the intersection of design and development, design engineers leverage AI-generated prototypes to bridge the gap between creative vision and technical feasibility, effectively communicating trade-offs across disciplines.

GenAI for UI copy and documentation drafting

Traditionally, documentation has been one of the most time-consuming aspects of maintaining design systems. With generative AI, this process is becoming far more efficient. AI models now draft initial versions of UI copy, component documentation and usage guidelines, allowing content specialists and designers to focus on refinement rather than starting from scratch. Tools like UX Pilot embed AI directly into design workflows, enabling teams to generate implementation-ready code and supporting documentation in parallel, streamlining handoff and reducing cycle time.

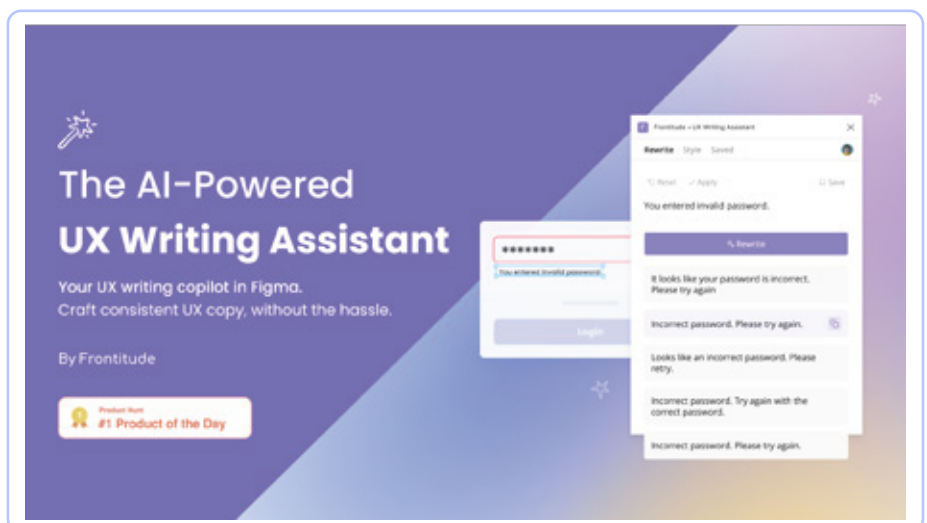


Image represents UX Writing Assistant by Frontitude plugin.

The efficiency gains from AI integration are considerable. Teams report reducing documentation time by up to 80% by using AI assistants to

generate initial drafts. Beyond speed, AI also enhances consistency by analyzing existing content patterns and recommending standardized formatting, terminology and tone across documentation assets.

The AI Component Creator exemplifies this capability, automatically generating both UI components and their associated documentation in parallel. This dual-creation process ensures visual consistency and complete documentation from the outset, helping teams avoid the common backlog that often arises when documentation lags behind component development.

DALL-E and visual asset generation

Tools like DALL·E have transformed the way visual assets are created within design systems. These generative AI models can produce custom illustrations, icons and imagery directly from text prompts—delivering high-quality results in minutes. What once required specialized design expertise and lengthy production cycles can now be accomplished rapidly, freeing design teams to focus on higher-value creative and strategic tasks.

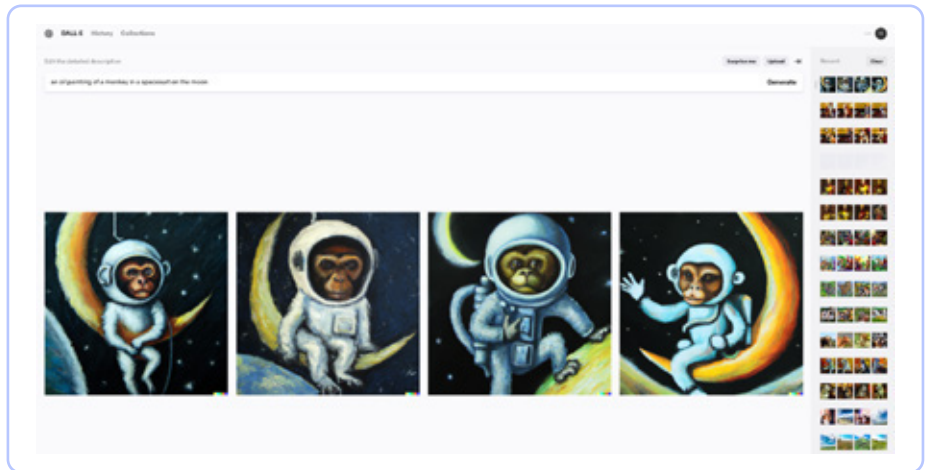


Image represents visual asset generation by DALL-E by OpenAI

For UX designers, tools like DALL·E enable rapid visual exploration without the need for traditional illustration expertise. Teams can quickly generate concept art, placeholder imagery and iterate on visual elements, particularly useful when working within tight timelines. The ability to produce visual assets at speed significantly accelerates prototyping, testing and iteration cycles.

These generative tools also democratize visual creation across cross-functional teams. Product managers, developers and other stakeholders can now contribute to early-stage ideation by generating initial visual concepts using natural language prompts. This fosters a more collaborative and inclusive design process. However, human designers remain essential for ensuring brand alignment, cultural sensitivity and the final refinement of AI-generated assets.

Together, these AI tools are redefining how design systems are developed, automating repetitive tasks while enhancing human creativity. Design teams are increasingly able to focus on strategic thinking and complex problem-solving, rather than production-heavy workflows. The result: more consistent, thoughtful and scalable design systems.

Automating design system components with AI

The automation of design system components marks a fundamental shift in building sustainable, scalable design frameworks. Advanced systems now leverage AI to manage repetitive tasks, enforce standards and maintain consistency, reducing manual workload while improving quality, speed and reliability.

AI-generated accessible color palettes (WCAG Compliance)

Creating accessible color palettes has traditionally involved extensive trial and error. With over two billion people globally affected by visual impairments, accessibility is no longer optional – it is a design imperative. AI tools now streamline the process by generating color combinations that meet Web Content Accessibility Guidelines (WCAG), while still preserving brand identity. This ensures inclusivity from the outset, without compromising visual appeal or consistency.

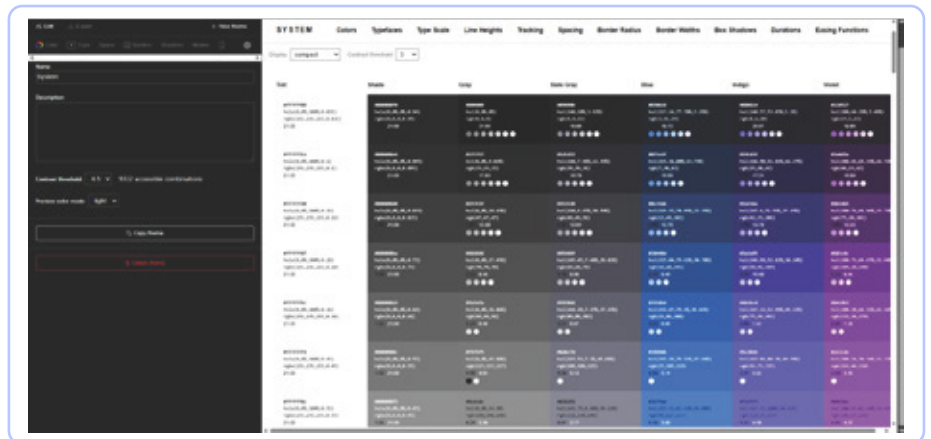


Image represents color palette with 9332 accessible combinations.

AI-powered tools systematically assess color contrast against the Web Content Accessibility Guidelines (WCAG), helping ensure digital products meet essential compliance requirements. These tools follow established contrast ratio thresholds – a minimum of 3:1 for large text (19px bold or 24px regular) and 4.5:1 for smaller text – in alignment with WCAG Level AA standards. This automated approach allows for real-time analysis of thousands of color combinations, reducing reliance on designers' visual judgment and increasing consistency across interfaces.

AI also tackles one of accessibility's longstanding challenges: false positives and false negatives in contrast evaluation. Traditional WCAG tools can sometimes approve color pairings that are difficult to read in specific contexts – such as dark mode – or reject combinations that are, in practice, visually acceptable. Advanced AI systems account for these contextual nuances, delivering more accurate and reliable accessibility assessments.

Reusable UI elements with auto-update capabilities

Creating fully reusable components with automated, cross-product

updates marks a pivotal advancement in the evolution of design systems. Traditionally, UI elements were maintained in isolation within individual design files, requiring repetitive, manual updates whenever changes were made. AI is transforming this process by enabling centralized component management, allowing updates to be propagated system-wide with minimal effort, dramatically improving consistency, scalability and efficiency.

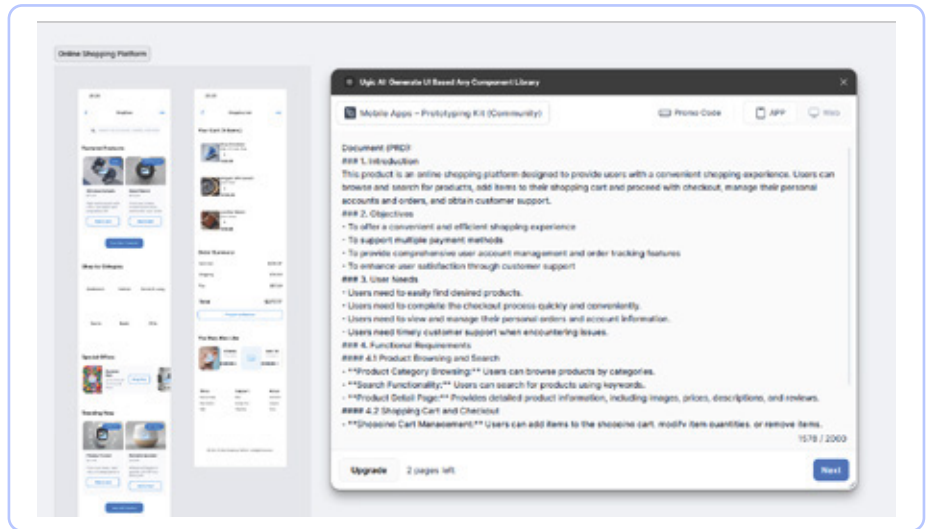


Image represents Ugc AI that creates interfaces from descriptions.

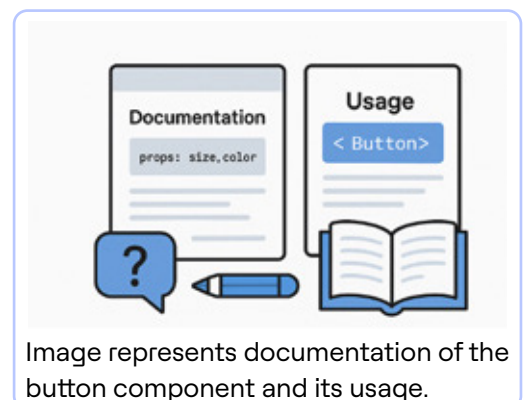
Modern AI-powered design systems allow teams to maintain shared collections of UI elements across multiple workflows, users and teams. A single modification to a component is automatically reflected across all connected instances within the design environment. This centralized approach drives significant efficiency gains, with teams reporting up to 50% faster prototyping after integrating AI into their design systems.

AI handles routine tasks such as component resizing, layout generation and maintaining style consistency — freeing designers to focus on more strategic and creative challenges. These systems can intelligently analyze existing design frameworks to generate UI components that align with specific brand guidelines, without sacrificing quality or visual coherence.

AI-powered documentation for component libraries

Documentation, often one of the most overlooked elements of design systems, has seen marked improvements through AI automation. Modern AI tools can now extract detailed documentation directly from design files and codebases, ensuring that documentation stays aligned with the most current implementation and reducing the risk of outdated or incomplete references.

Microsoft's Power Pages Component Library illustrates this capability through AI-powered components that streamline and accelerate development workflows. These components enable seamless integration of prebuilt Generative AI features with minimal implementation



effort. Documentation is generated in parallel with component creation, eliminating the backlogs that often hinder traditional design systems.

AI-powered accessibility review is also embedded directly into documentation workflows, ensuring components meet established standards before deployment. Unlike conventional automated accessibility checks that offer basic pass/fail outcomes, AI-driven testing incorporates organization-specific accessibility guidelines and provides contextual best-practice recommendations.

Human oversight remains critical throughout the automation process, especially in maintaining cultural sensitivity and contextual awareness in design decisions. The most effective design systems strike a balance between AI automation and human creativity, positioning AI as a collaborative partner whose outputs are enhanced through expert review and thoughtful refinement.

Case study - AI-generated data visualization components in Figma

Data visualization components pose distinct challenges within design systems due to their inherent complexity and diverse implementation needs. A recent product design team showcased how integrating AI with Figma significantly transformed their approach to building scalable, reusable visualization components for enterprise-grade dashboards.

Prompting AI for configurable chart variants

The implementation begins with a conversational interface that translates data requirements into visual outputs. LIDA (Language-Integrated Data Analysis), an AI tool purpose-built for visualization generation, allows teams to convert raw data into grammar-agnostic visualizations – without the need for specialized coding expertise. Designers can generate configurable chart variants through simple natural language prompts, such as “create a bar chart comparing quarterly sales” or “generate a heat map of user engagement.”

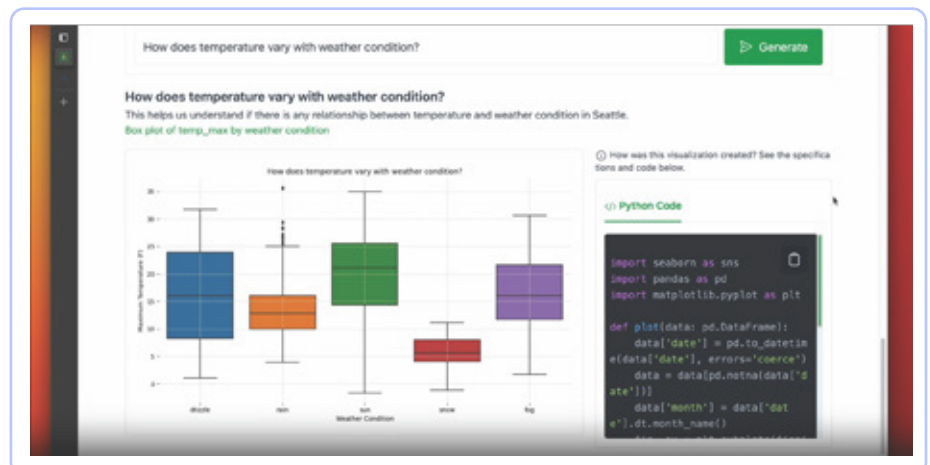


Image represents Microsoft's LIDA creating charts with AI.

LIDA's grammar-agnostic approach allows visualizations to be generated in any charting grammar represented as code, giving designers full control over visualization goals while AI manages the underlying technical implementation. This capability empowers teams to create multiple component variants — such as bar charts, line graphs or scatter plots — from a single data source, laying the groundwork for scalable and systematic visualization libraries.

Auto-generating usage documentation and accessibility labels

AI also helps address critical accessibility requirements that often complicate the development of visualization components. Modern AI tools can automatically generate screen reader descriptions and alt text for data visualizations, ensuring that data narratives are accessible to users with visual impairments. This automation significantly reduces the manual effort traditionally required in making visualizations inclusive and compliant.

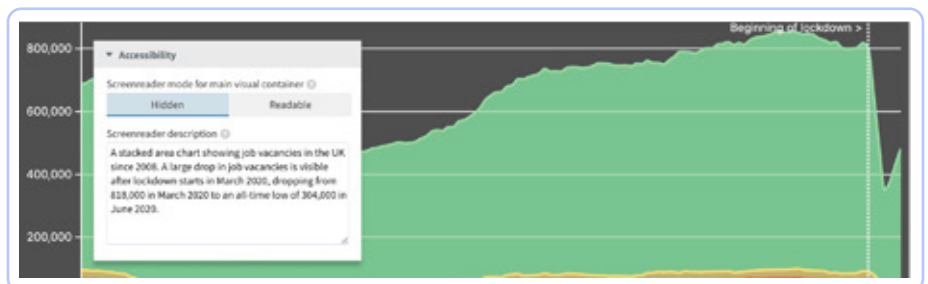
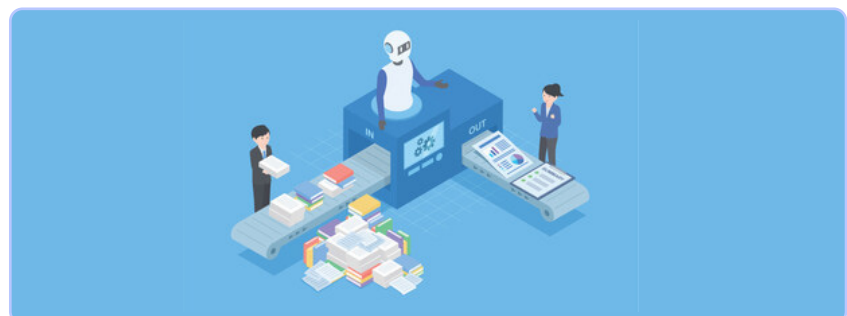


Image represents a description of a stacked area chart created using Flourish Studio

Systems like Flourish now automatically include screen reader descriptions across all visualization templates. According to their documentation, elements such as titles, subtitles and footers are inherently screen reader-friendly and are read aloud either upon user interaction or as assistive technologies navigate the page. Similarly, OpenAI's GPT-4 model can generate alternative text for visualizations by analyzing uploaded chart images, eliminating the need for manual alt text creation and improving accessibility at scale.

Reducing design time from months to weeks

The integration of AI significantly shortens development cycles for visualization components. Design teams report that AI-generated visualizations reduce timelines from months to weeks, allowing faster iteration and deployment. Tools like Tableau Pulse exemplify this acceleration, instantly analyzing uploaded CSV files and generating tailored visualizations on demand.



Source: Adobe Stock

This case highlights the evolving role of design systems, from static repositories that document existing components to intelligent systems that actively contribute to component creation. As one designer aptly noted, “AI is not being created to replace people. It is being created to assist and augment - and effectively help people operate at a level they might not have known was possible”.

AI’s ability to generate multiple design directions simultaneously enables teams to explore creative options they may not have otherwise considered. As a design leader observed, “One of the things we focus so much on in design is exploring multiple paths - that’s a place where I really believe AI will help”. This expanded exploration capability enhances the creative process while maintaining the consistency and structure essential to scalable visualization systems.

Balancing human creativity with AI automation



Source: Adobe Stock

The integration of AI into design systems must be approached with thoughtful consideration of human oversight and creative direction. The most effective outcomes are achieved when AI automation supports — rather than replaces — designer expertise, serving as a foundation for informed human decision-making.

Human validation of AI outputs for cultural sensitivity

While AI systems can generate design components with speed and efficiency, they often lack the cultural awareness necessary for truly inclusive design. Human designers play a vital role in reviewing AI-generated outputs to identify and correct potential biases — often rooted in the training data — that may lead to exclusionary user experiences. Validation by experienced professionals ensures that UI elements reflect a diversity of user perspectives and do not unintentionally reinforce cultural stereotypes. Studies show that designers who actively review and refine AI-generated content develop a stronger sensitivity to bias patterns and become more attuned to cultural inclusivity in their design practices.

Collaborative workflows between designers and AI

Effective design systems position AI as a collaborative partner in the

creative process. In this model, AI handles repetitive and production-heavy tasks, while human designers retain creative control and strategic oversight. This partnership fosters an iterative cycle of improvement — AI rapidly generates multiple design variations and human feedback refines those outputs, guiding the system toward increasingly effective results.

Component creation workflows clearly illustrate this collaboration:

- AI generates initial accessible components based on predefined system parameters.
- Designers assess and refine these elements for usability, brand alignment and cultural relevance.
- The refined components then serve as training data, enhancing AI performance in future iterations.

Teams adopting collaborative AI workflows report up to 50% faster prototyping compared to traditional design methods.

Empathy and contextual awareness in design decisions

Human designers bring empathy and contextual insight that AI cannot replicate. They understand emotional nuance and lived experiences. Critical factors in anticipating real-world usage scenarios, addressing cultural interpretations of color and meeting diverse accessibility needs.

While AI can mimic empathetic responses through sentiment analysis or behavioral pattern recognition, these remain algorithmic approximations. Genuine empathy — rooted in human experience — is essential for crafting design solutions that resonate emotionally and inclusively with users.

The future of design systems lies in strategically augmenting human capabilities with AI, not replacing them. By combining intelligent automation with human empathy and contextual awareness, design teams can create systems that are not only efficient and scalable, but also deeply meaningful and user centered.

Ethical considerations in AI-driven design systems

Ethical considerations are foundational to the responsible integration of AI within design systems. As these technologies continue to evolve, they require deliberate and systematic attention to risks that could undermine inclusivity, fairness and user trust.

Bias in training data and inclusive design risks

Bias in training data has a direct impact on design system outputs, potentially creating barriers to equitable and inclusive user experiences. Research shows that unsupervised AI systems can exhibit 2.4 times more bias than their supervised counterparts, leading to design components that may inadvertently exclude or misrepresent certain user groups. To mitigate these risks, it is essential to adopt data collection practices that actively include historically underrepresented and marginalized communities.

This approach helps reduce systemic bias and fosters the development of design systems that serve a broader, more inclusive user base.

Transparency in AI contributions to design

Transparency in AI-enhanced design systems must go beyond algorithmic explainability. It requires clear documentation of AI involvement across development and deployment stages. This includes identifying which components were generated by AI and outlining the validation processes used to ensure their quality and appropriateness. Consumer research reinforces this need: 73% of users expect companies to explain how AI impacts their digital experiences. Transparency is no longer just a best practice, it's a core expectation for building user trust and maintaining accountability in AI-driven design.

Maintaining trust through human oversight

The EU AI Act affirms that "high-risk AI systems shall be designed to be effectively overseen by natural persons." In the context of design systems, this underscores the importance of human validation for AI-generated components to ensure alignment with ethical principles and contextual relevance. Designers play a critical role in reviewing outputs for cultural sensitivity and must uphold structured accountability throughout the AI integration process.

Conclusion

Design systems have undergone a remarkable transformation, from static style guides to dynamic, AI-enhanced frameworks. Today, AI automates repetitive design tasks, enabling teams to redirect their focus toward strategic decision-making and creative problem-solving. Documented efficiency gains highlight meaningful improvements in both speed and consistency when AI is thoughtfully integrated into design workflows.

Looking ahead, the future of design systems depends on achieving the right balance between automation and human creativity. While AI will continue to accelerate how design systems are built and maintained, human designers bring irreplaceable value through empathy, cultural awareness and strategic insight. Together, this synergy fosters the development of design systems that are not only efficient and scalable, but also inclusive, meaningful and aligned with real user needs.

Key takeaways

AI is revolutionizing design systems by automating routine tasks while amplifying human creativity, enabling teams to focus on strategic thinking rather than repetitive production work.

- AI reduces design system maintenance time by up to 80% through automated color palette generation, real-time component updates and instant synchronization across platforms.
- Human oversight remains critical for ethical AI implementation - designers must validate AI outputs for cultural sensitivity, bias mitigation

and inclusive design principles.

- Collaborative AI-human workflows accelerate prototyping by 50% when AI handles repetitive tasks while designers provide creative vision and strategic direction.
- Accessibility compliance becomes automated through AI tools that automatically evaluate color contrasts against WCAG standards, making inclusive design the default rather than an afterthought.
- Documentation generation transforms from tedious to automatic - AI can draft component documentation, usage guidelines and accessibility labels simultaneously with component creation.

The most successful design systems of the future will treat AI as a collaborative partner rather than a replacement, leveraging automation for efficiency while preserving human empathy and contextual awareness for meaningful user experiences.

References

1. <https://dev.to/dhrumitdk/the-future-of-design-systems-ai-automation-and-beyond-fod>
2. <https://bradfrost.com/blog/post/ai-and-design-systems/>
3. <https://www.designsystemscollective.com/an-ai-native-design-system-78cd94e4c928>
4. <https://a16z.com/how-generative-ai-is-remaking-ui-ux-design/>
5. <https://flourish.studio/blog/accessible-visualization-screenreader-description/>
6. <https://dl.acm.org/doi/10.1145/3708394.3708413>
7. <https://www.designsystemscollective.com/the-role-of-ai-in-design-systems-co-pilots-automation-future-tools-e6c9afbc1efd>
8. <https://onlinelibrary.wiley.com/doi/full/10.1002/mar.22235>
9. <https://fuzzymath.com/blog/embracing-ai-in-design-how-designers-and-ai-can-collaborate/>
10. https://www3.weforum.org/docs/WEF_A_Blueprint_for_Equity_and_Inclusion_in_Artificial_Intelligence_2022.pdf
11. <https://www.ibm.com/think/topics/ai-transparency>
12. <https://artificialintelligenceact.eu/article/14/>

Author information



Apurvo Ghosh

As a Group UX Specialist at HCLTech, Apurvo works at the forefront of a collaborative, multidisciplinary team focused on delivering impactful UX designs and services. Beyond his core responsibilities, he demonstrates a strong commitment to enabling smooth transitions in the ever-evolving landscape of UX design and technology. Leveraging his deep knowledge and experience, he actively supports the team in navigating technological shifts, ensuring they stay aligned with emerging trends and methodologies. He is also a Certified Usability Analyst at Human Factors International.



Pradeep Gajendran

Pradeep is a Senior Lead UX Generalist currently working as a Senior Technical Lead at HCLTech. He is a HFI CUA certified UX professional with over a decade of expertise in crafting innovative design solutions using Design Thinking. His versatile background spans various industries, including healthcare, automobiles, telecom and gaming. In all projects, he strives to simplify the relationship between people and the interactive products they use, taking into account business goals and technological constraints.

HCLTech | Supercharging Progress™

HCLTech is a global technology company, home to more than 226,600 people across 60 countries, delivering industry-leading capabilities centered around AI, digital, engineering, cloud and software, powered by a broad portfolio of technology services and products. We work with clients across all major verticals, providing industry solutions for Financial Services, Manufacturing, Life Sciences and Healthcare, High Tech, Semiconductor, Telecom and Media, Retail and CPG, Mobility and Public Services. Consolidated revenues as of 12 months ending September 2025 totaled \$14.2 billion. To learn how we can supercharge progress for you, visit hcltech.com.

hcltech.com

