

# UNLOCK THE POTENTIAL OF AI TO CREATE A **XaaS-CENTRIC** 21<sup>ST</sup> CENTURY ENTERPRISE



## Introducing DRYiCE SX



DRYiCE SX is a 21<sup>st</sup> century cloud native platform that can aggregate diversified catalogs for various services from multiple suppliers. It helps business leaders in plugging the growing gap between user expectations and experiences by allowing enterprise suppliers and consumers to connect for business transactions in a XaaS (Everything as a Service) ecosystem.

### Key functionalities



Catalog aggregation



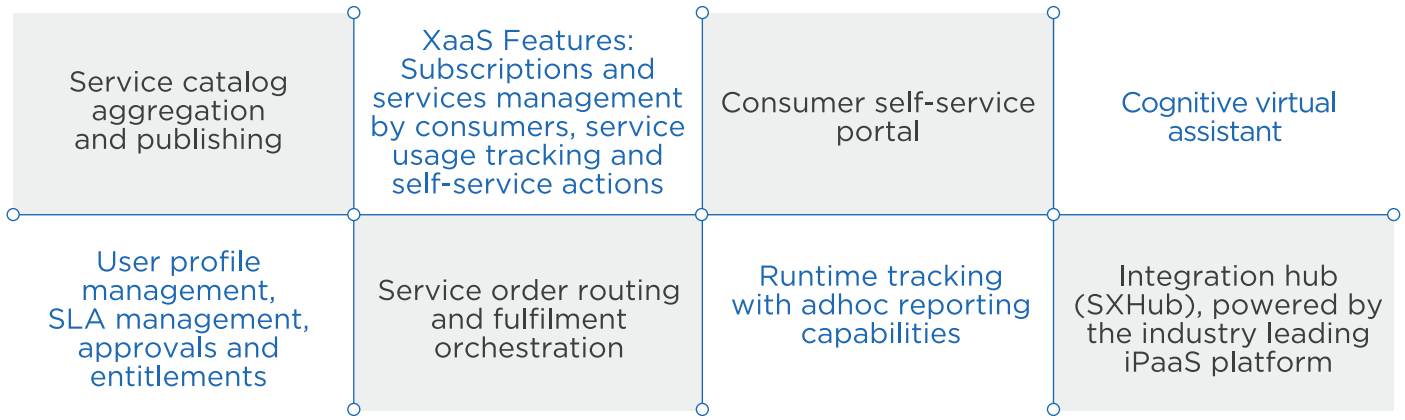
Service publishing



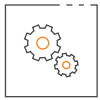
Fulfillment orchestration  
for both IT/ Non IT services

DRYiCE SX is based on the IT4IT Reference Architecture, whilst also being flexible enough to be configured to align to the ITIL framework.

## Platform features & capabilities



## Key functional modules



Service Supply Chain Management



Service Metering & Billing



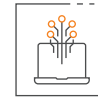
Service fulfillment and support



Portfolio & Catalog Management

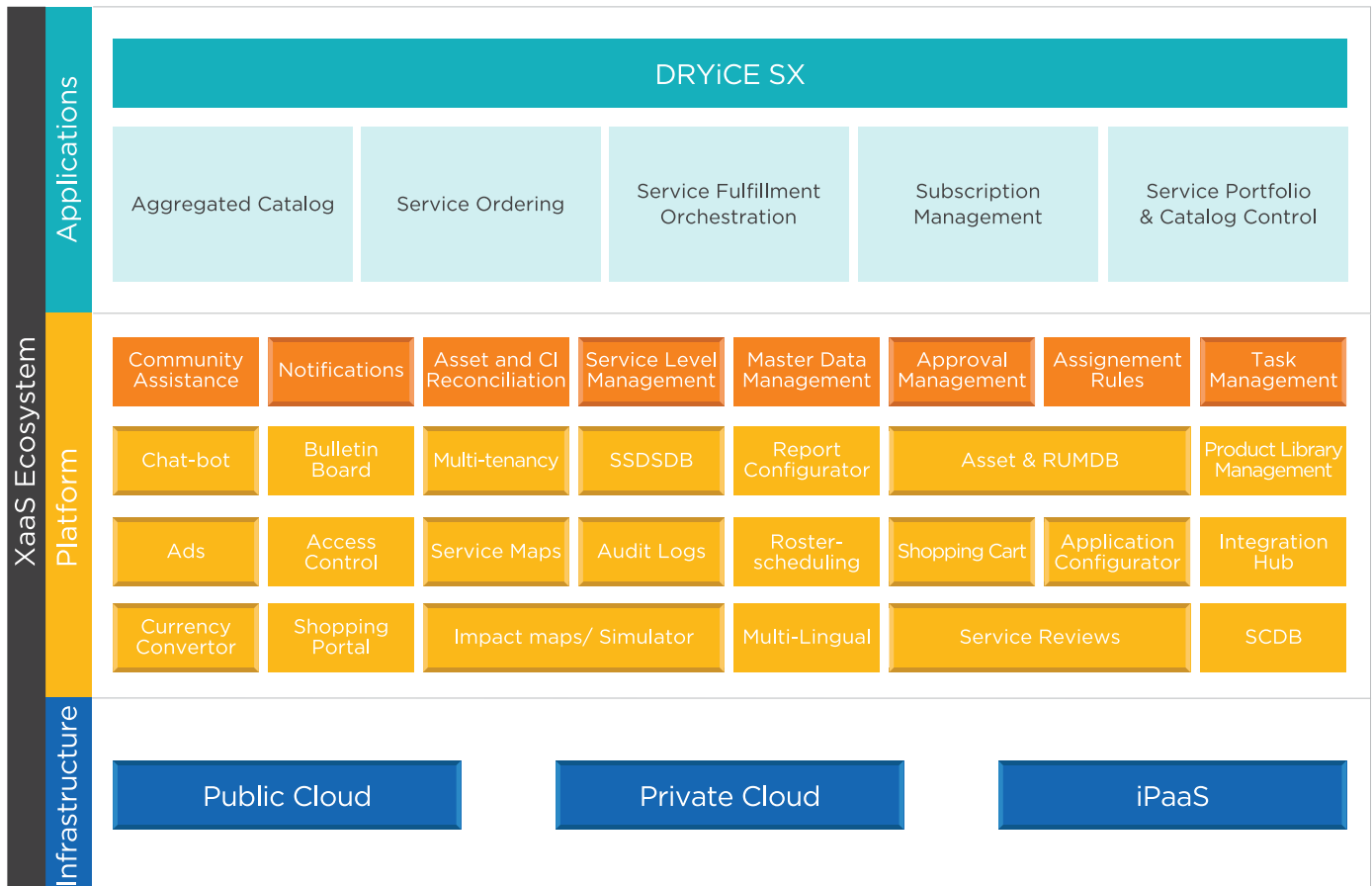


Self-service consumer portal

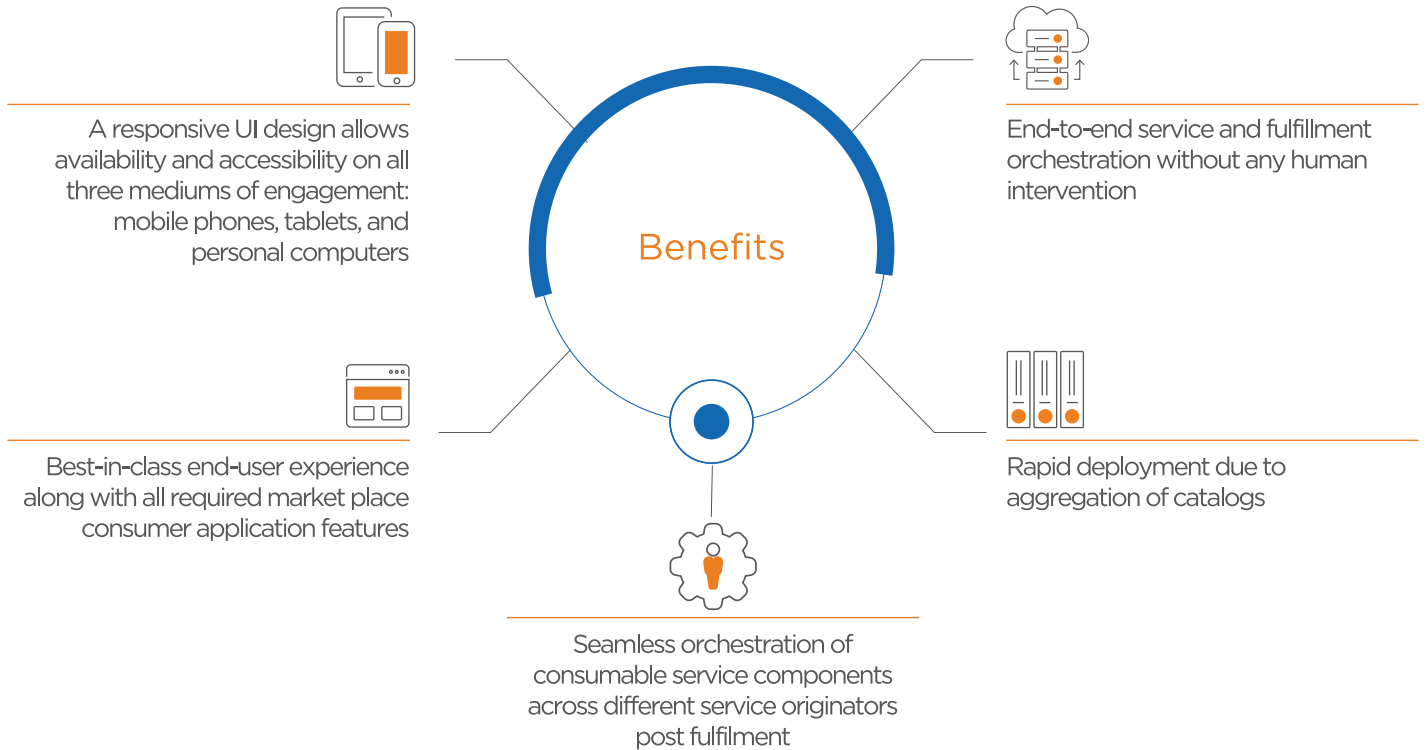


Service availability and performance reviews

## DRYICE SX Architecture Model



# Benefits



## What is DRYiCE?

DRYiCE is the Enterprise AI Foundation. It is HCL's autonomies and orchestration suite of services, products, and platforms powered by the world's best AI technology to enable enterprises to operate in a leaner, faster, and cheaper way, while ensuring superior business outcomes in terms of experience, speed, and agility. It brings the power of AI to transform IT and business services, business processes, and digital operations. HCL's cutting-edge autonomies and AI-enabled solutions are supported by an extensive partner ecosystem and Centers of Excellence across the globe.



For more information  
write to us at [dryice@hcl.com](mailto:dryice@hcl.com) or visit [DRYICE.ai](http://DRYICE.ai)



This year, HCL's presence at Think 2018, is themed with an iconic representation of the letters "U & i". Through this coinage, we aspire to represent the growing tide of productive infusion of data analysis, cognitive capabilities and intelligence-based decision systems (denoted by the "i") into the mainstream enterprise operational rubric of our clients worldwide (denoted by "U").

We believe this rapid convergence of technology, processes and people, will create a self-sustaining eco-system for 21st century enterprises that will mature to realize value beyond the norm for years to come. Most of the 30 HCL solutions being showcased at Think 2018 are testament to this evolving philosophy for enterprise solutions that bear a similar promise for the future.

And finally, we also realize that the human-machine capability integration is something that cannot become a reality in isolation. In fact, it will be a product of close partnerships (as denoted by the melding of human and robotic minds in the visual), like the one forged by HCL and IBM and many others to come. All of which will take steps to help create a world that understands the risks and appreciates the benefits of making this next big human-inspired technological leap ahead.



[www.hcltech.com](http://www.hcltech.com)

**Hello there! I am an Ideapreneur.** I believe that sustainable business outcomes are driven by relationships nurtured through values like trust, transparency and flexibility. I respect the contract, but believe in going beyond through collaboration, applied innovation and new generation partnership models that put your interest above everything else. Right now 115,000 Ideapreneurs are in a Relationship Beyond the Contract™ with 500 customers in 32 countries. **How can I help you?**

*Relationship*<sup>™</sup>  
BEYOND THE CONTRACT

**HCL**