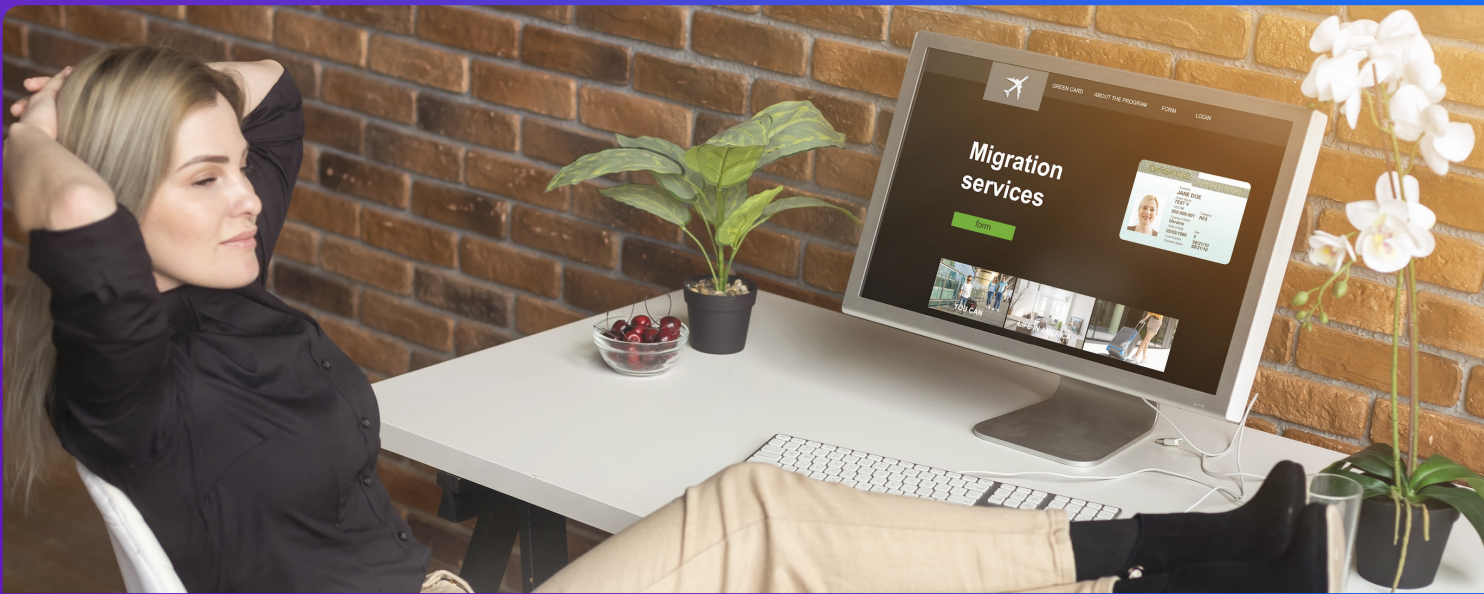


# BI Gateway (BiG) for Business Intelligence solution migration

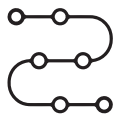


# Introduction

Enterprises have a diverse BI tools landscape often convoluted with multiple tools which address the reporting requirements from system of records or system of engagements or at an enterprise. Many of these business intelligence tools are not robust enough to meet the demands of delivering required business insights. Organizations are responding to the problem by either adopting a new business intelligence tool or selecting a preferred one from the existing landscape. In either case, there is need to migrate existing BI work products, which is a manual, lengthy and extremely painstaking process. This delay adds additional cost to the enterprise from people, infrastructure and licensing perspective for the existing tools. Not anymore! HCLTech introduces the next BiG framework for BI migrations - it can reduce the migration efforts by 35-40%.



## Challenges faced by businesses during any Business Intelligence migration:



**Lack of end-to-end lifecycle management**



**Low predictability of BI migration project**



**Lack of automation**



**Prolonged time-to-market for new BI tools**



**Establishing standardization of self-services**



**Lack of documentation and analysis of existing reports dashboards**

# Solution overview

The BI Gateway (BIG) framework is a step towards addressing these challenges with an automated migration of the existing BI build from one platform to another by leveraging four key components.

## Discoverer



**Automatically scans the reports/repository metadata**

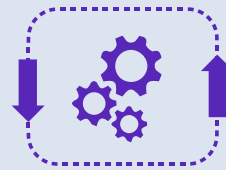
---

**Extracts the inventory of existing reports and dependent objects**

---

**Catalogs the various subject areas and associated source tables that are in use**

## Rationalizer



**Automatically extracts the usage data for existing reports**

---

**Provides an interface to analyze the output**

---

**Inbuilt scoring logic (P/G/S/B) to assist in identifying obsolescence & sprint planning**

## Builder



**Builds data source connections in the Target BI environment**

---

**Builds data model and extracts for the selected reports**

---

**Builds basic attributes and measures for reports and dashboards**

## Publisher



**Deploys the data source file in the target BI**

---

**Helps to validate the Data Source and publishes the same to BI server**

---

**Enables access to source file to review the model and build the reports/dashboards**

## Business benefits

- Automated functional technical assessment framework that analyzes the existing BI technology
- Systematic cataloguing of outputs for respective subject areas
- Identification of obsolete sprint planning for the migration with the rationalizer output
- Enable building of metadata layer and related source connections in the target BI solution
- Publish data source connections to target BI server
- Lifecycle management for version control and deployment
- Self-service BI feature for new build
- Ideal for as-is migration with low development efforts



## BI Gateway can be leveraged for any/ all the below services

- Assessment of BI platform
- Helps in replacement / migration of existing BI technology
- Optimization of existing BI technology (usage design)
- Migration of data models
- Enablement of self-service BI
- Automated deployment of BI solution



## Technology stack

The BI Gateway is currently delivered for migration of Business Intelligence tools i.e. OBIEE, Business Objects and SAS to Tableau. It leverages Python, Visual Basic and DevOps tooling

“

BiG is being evaluated by few leading customers for their migration strategies and we are working to add more technologies to the migration framework. Bi Gateway is going to be the next BiG enabler!”

# HCLTech | Supercharging Progress™

HCLTech is a global technology company, home to 219,000+ people across 54 countries, delivering industry-leading capabilities centered around digital, engineering and cloud, powered by a broad portfolio of technology services and products. We work with clients across all major verticals, providing industry solutions for Financial Services, Manufacturing, Life Sciences and Healthcare, Technology and Services, Telecom and Media, Retail and CPG, and Public Services. Consolidated revenues as of 12 months ending September 2022 totaled \$12.1 billion. To learn how we can supercharge progress for you, visit [hcltech.com](https://hcltech.com).

[hcltech.com](https://hcltech.com)

