

Embedded Analytics in Tableau

Reimagining businesses by empowering
data analysis



Organizations use data to gain insights and make effective business decisions. The expectation is to have secured yet easy access to data. Embedded Analytics in Tableau makes data easily available through flexible visual analytics to all users. It is a business enabler in which Tableau empowers the data analysis and shares in the external interfacing applications. Tableau Embedded Analytics is integrated into your own applications, products, web portals and other platforms to create and provide visually powerful analytics, dashboards as well as reports to users outside your organization.



Enable businesses with self-service BI

Include advanced analytics in your apps or products and empower any user to access dashboards and reports



Focus on enhanced customer experience

By using an embedded solution you give your customers insights into their own data with easy-to-use, impactful visual analytics



Manage security

Decide your own levels of security and access to data, your preferred SSO method, all this in a multi-tenant environment



Provide faster solutions

Apply advanced analytics to application development to improve the quality and pace of delivery



Cost efficient

No hidden costs attached and no need for additional tools to be able to use the Tableau Embedded Analytics solution



Highly scalable

Easily scale up or down as per your requirement, license models adapt to what you need, when you need it

Introducing HCLTech's ADvantage Analytics

One-stop shop to deliver actionable insights for global enterprises

ADvantage Analytics is a multi-dimensional solution to engage users, processes and technology for analytics advancement and adoption. It brings businesses up to speed with the needs of top data-driven companies within a framework that responds to the technological trends of today and tomorrow and enables actionable insights across the value chain. Our analytics toolsets make enterprises' insights strategy self-propelled, self-sufficient and bring promising capabilities that gear them for success in today's competitive markets that call for hyper-personalization and excellent CX orchestration. It comprises six key offerings:



Insights-Embed: Injecting data visualization and predictive analytics into your applications

Insights make business workflows smarter only when they are taken out of silos and embedded within systems that power business processes. Today's organizations expect real-time insights directly embedded in their enterprise business applications.

To make it happen, applications require pluggable, yet secure access to data in compliance with the regulations across geographies in question. Insights-Embed helps enterprises do exactly that - by letting them inject data in the form of visual and prescriptive analytics into their own desktop or web-applications, products and other platforms.

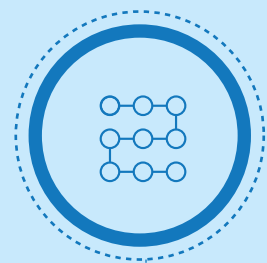


Insights-Embed helps enterprises in:



Closing the gap between insights and business processes by unifying insights with the technology stack in use.

Injecting interactive data visualization and predictive analytics to power real-time insights directly into any enterprise business application.



Streamlining your business processes and adding value to your products.

HCLTech | Supercharging
Progress™

hcltech.com