



BIG DATA &  
BUSINESS ANALYTICS



**UNLEASH THE POWER OF  
REAL-TIME INSIGHTS**

**WITH HCL'S NEXT GEN**

**BI SOLUTION**

# BI NOT RUNNING AT THE SPEED OF BUSINESS?



Are your senior managers frustrated with the amount of time spent waiting for business information from SAP Business Warehouse (BW)?



Under pressure from your board to make sense of Big Data and the opportunities it affords your company?

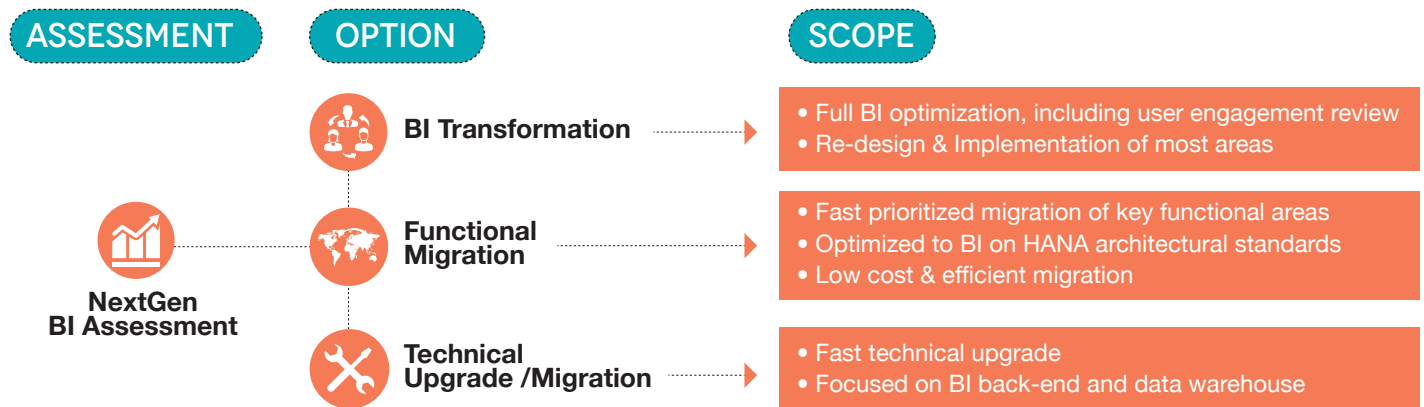


Are your business managers spending 80% of their time manipulating data from multiple systems, leaving them with little time to focus on their business?

IF SO, HCL CAN HELP YOU

## HCL'S NEXT GEN BI SOLUTION

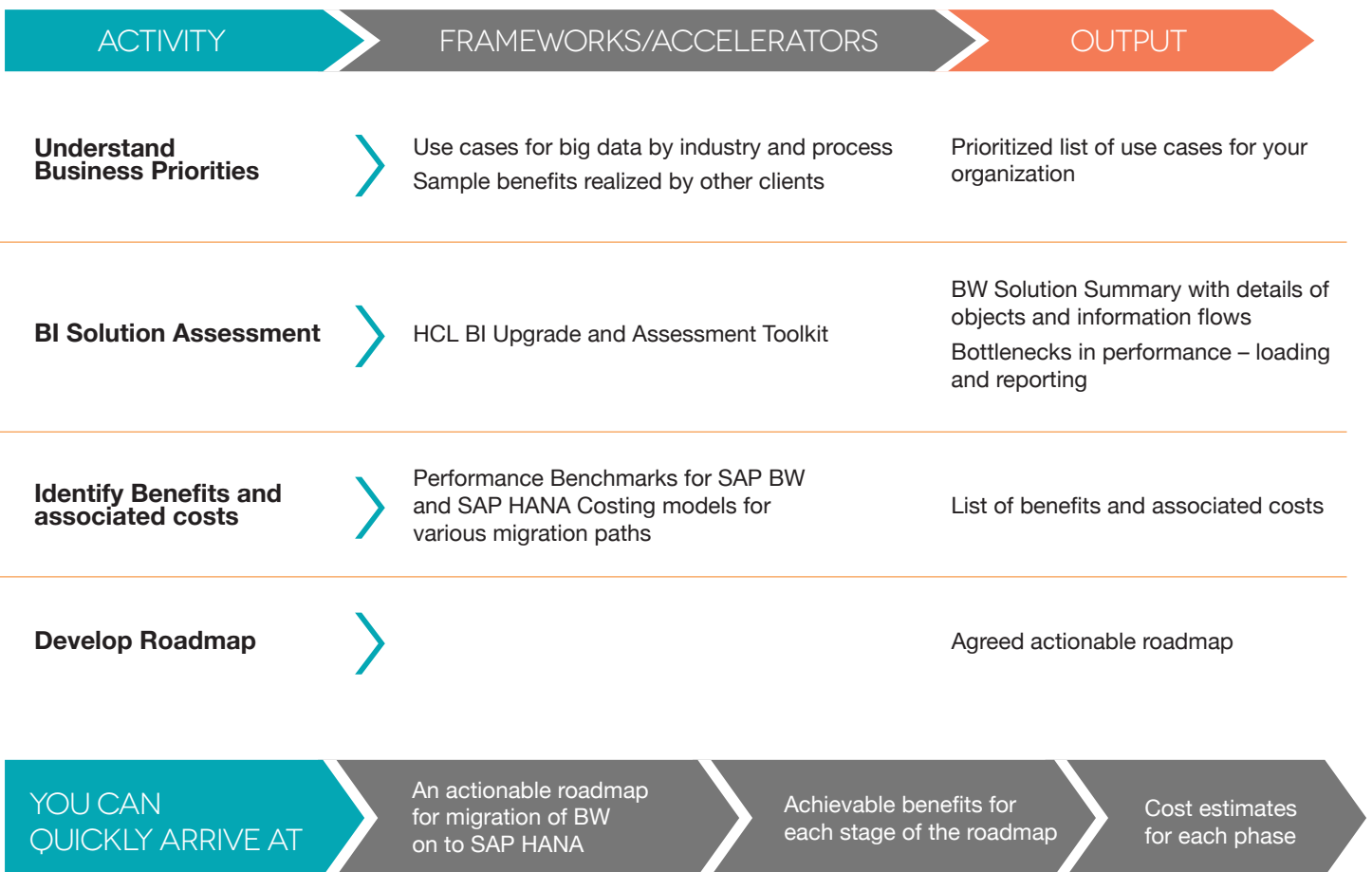
Many of our customers have faced similar challenges with an SAP BW solution that isn't living up to expectations and SAP HANA licenses that are not leveraged to their full potential. We have significant experience in helping our clients improve performance of their enterprise reporting solutions by helping them migrate to HANA through an in-depth assessment and a tailored solution.



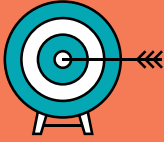
# HCL'S RAPID ANALYTICS **MIGRATION FRAMEWORK**

We have helped a number of clients move from their legacy SAP BW solution to SAP HANA. This experience has been used to create HCL's migration framework 'Rapid Analytics Migration Framework' providing the activities and tools needed to develop an actionable migration path.

## **KEY STEPS** IN THE RAPID ANALYTICS MIGRATION FRAMEWORK ARE:



## THE HCL ADVANTAGE



For many years HCL has been at the forefront of Business Intelligence (BI) solutions for SAP:

- › HCL has been implementing SAP BW for over 15 years and understands the evolutionary path that it has undertaken
- › HCL was the first to create an hybrid migration approach for BW on to HANA
- › HCL has developed a unique BW upgrade and migration framework to ease the process

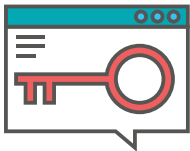
## CASE STUDY – GLOBAL CONSUMER GOODS ORGANIZATION

### BUSINESS ISSUES

The client had several existing BW deployments which were implemented over a 10 year period. Recent times had seen a considerable change in the business; consequently, the organization was restructuring to address the opportunities much more effectively. This reorganization necessitated a change in the BI landscape as well with a need to incorporate non- ERP data much more than their current BI solution enabled. They had decided to leverage SAP HANA. With a goal of being transformational, they decided to re-implement the entire solution. However, this would take time and demanded greater time from users, who were already stretched from consolidating data across multiple sources.



### SOLUTION



HCL carried out an analysis of the current BI solution and its usage. Based on this analysis, an approach combining transformational BI and functional migration was devised. This approach resulted in some areas seeing a full re-implementation where an information area in the existing solution was not deemed as appropriate for the future. All information areas that were deemed 'fit-for-purpose' were migrated to the new BI on HANA solution manually incorporating the new architectural patterns that were enabled by running BI on SAP HANA.

### VALUE DELIVERED

- 35% lower cost of implementation compared to a full re-implementation
- 30% of information areas migrated on to SAP HANA almost 12 months ahead
- Solution complies to new BI on HANA standards



write to us at [ets-bis@hcl.com](mailto:ets-bis@hcl.com)



APPLICATION  
SUPPORT &  
MAINTENANCE



BIG DATA &  
BUSINESS  
ANALYTICS



BUSINESS  
ASSURANCE  
& QUALITY  
SERVICES



CLOUD, DIGITAL  
EXPERIENCE &  
MOBILITY



COLLABORATION,  
CONTENT & SOCIAL



CUSTOMER  
RELATIONSHIP  
MANAGEMENT



DIGITAL  
SYSTEMS  
INTEGRATION



E-COMMERCE  
& OMNI-CHANNEL



ENTERPRISE  
RESOURCE  
PLANNING



HUMAN  
CAPITAL  
MANAGEMENT



MODERN  
APPLICATION  
DEVELOPMENT



PLATFORMS &  
INTEGRATION



[www.hcltech.com](http://www.hcltech.com)

**Hello there! I am an Ideapreneur.** I believe that sustainable business outcomes are driven by relationships nurtured through values like trust, transparency and flexibility. I respect the contract, but believe in going beyond through collaboration, applied innovation and new generation partnership models that put your interest above everything else. Right now 100,000 Ideapreneurs are in a Relationship Beyond the Contract™ with 500 customers in 31 countries. **How can I help you?**

*Relationship*<sup>™</sup>  
BEYOND THE CONTRACT

**HCL**