

DELIVERING A **SMARTER** SUPPLY CHAIN WITH EXCELLENCE

Strategize | Optimize | Automate

WHAT ARE THE TOPMOST PRIORITIES FOR A NEW-AGE CHIEF PROCUREMENT OFFICER?



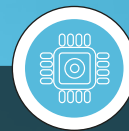
Optimize the supply chain spend



Implement best practices around strategic sourcing



Ensure contract compliance



Leverage the right technology for the right processes

OUR SCM SERVICE OFFERINGS

Data Management

Sourcing and Procurement

Consulting and Analytics

Order Management

Logistics Management

Compliance Management

WHY PARTNER WITH US?

3500+
SCM professionals

15+
supported languages

Multi Billion Dollar spend under management

32
global delivery centers

30+
clients served across industries

BENEFIT FROM OUR PARTNERSHIP ECOSYSTEM WITH

The Hackett Group | SAP | Microsoft | Oracle | JD Edwards | Ariba | Coupa | ProcureAbility | Automation Anywhere | WorkFusion | UiPath | Blue Prism

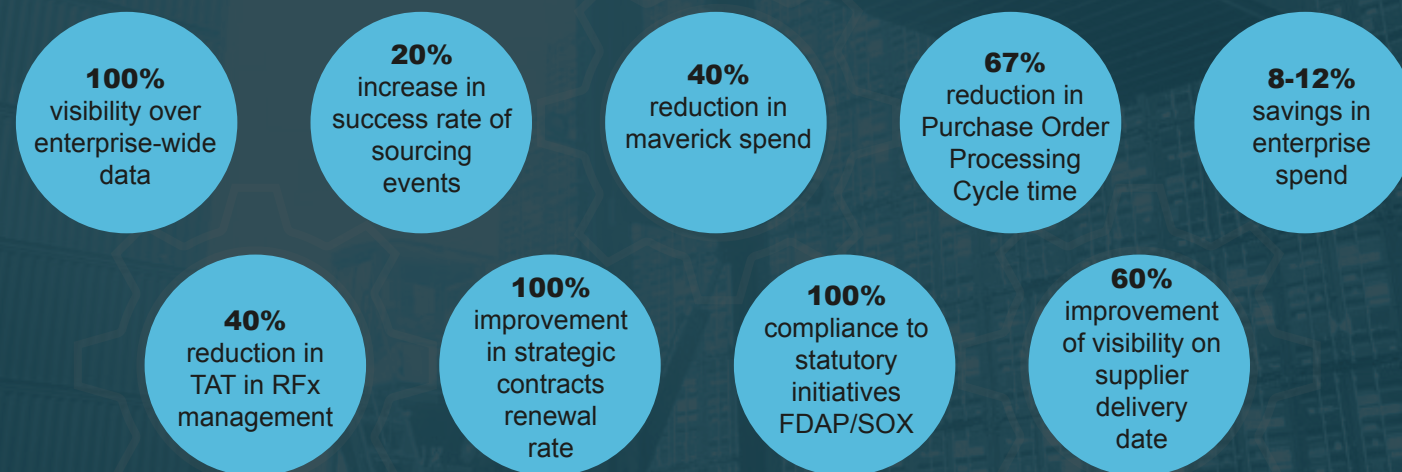
LEVERAGE OUR DIVERSE EXPERIENCE ACROSS



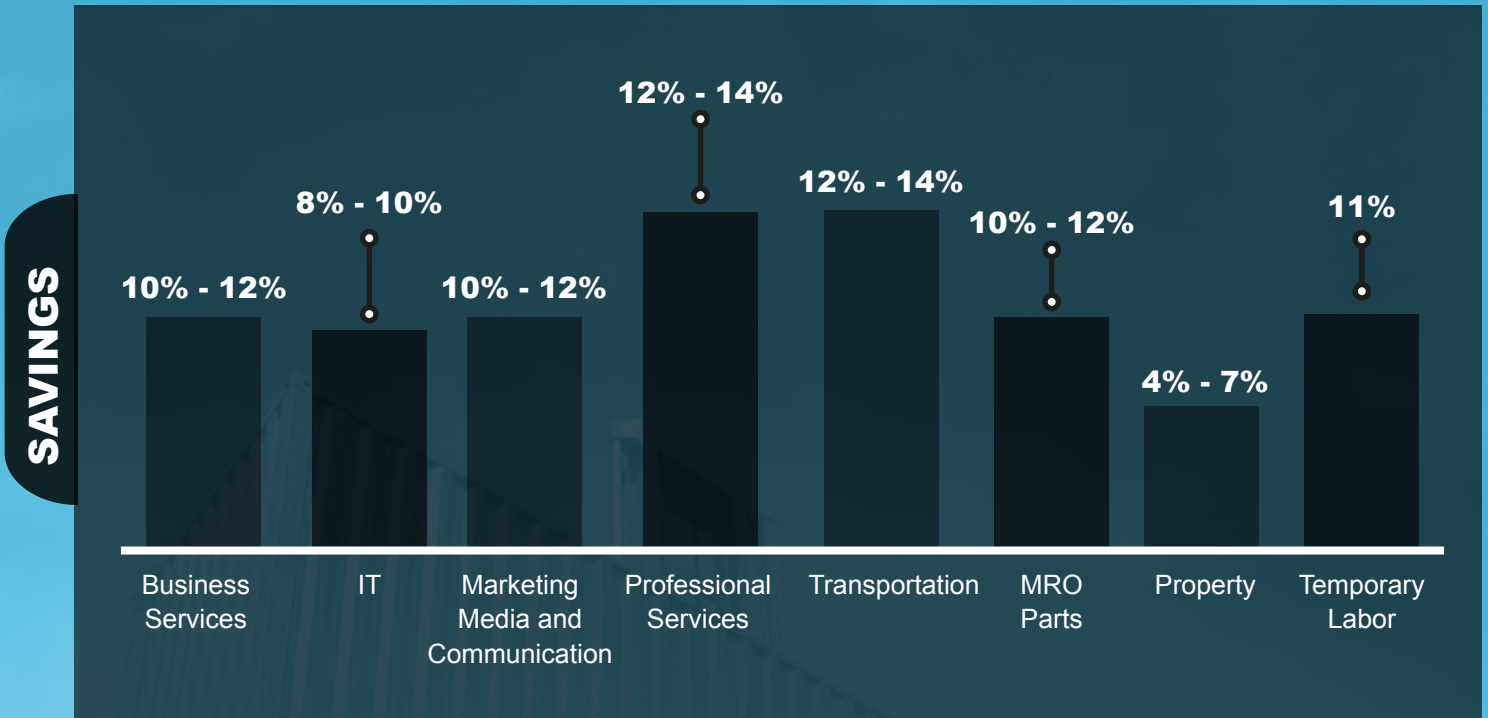
SOURCING AND PROCUREMENT OFFERINGS



VALUE DELIVERED



With HCL's SCM services, We have delivered savings on categories like



THE HCL DIFFERENTIATOR

We adopt cutting-edge technology for Business Process management such as Lean Six Sigma. We deploy Robotic Process Automation (RPA) tools in areas of RFx, e-procurement, and PR-PO process

We leverage our proprietary Artificial Intelligence and Machine Learning solution EXACTO to complement automation

We employ a multi-pronged approach and demonstrate PoC for problem-solving based on recommendations



We recommend the right processes and technology interventions to adhere to global practices

We are benchmarked to global industry standards and mapped across categories

Our exclusive partnership helps us to unlock specialized expertise in category, sourcing, procurement and P2P

OUR TARGET OPERATING MODEL

Shared Service

- Center with client-centric models with services across FA, SCM, HR, and Product Support.

EFaaS™

- Integration of processes and IT systems for a function
- End-to-end infrastructure, Business Services, and apps
- Flexible engagement models

IT/Ops Integrated Model

- Reduced communication and management overhead through internal collaboration with client IT and Ops insight

KEY ADVANTAGES

Joint management of outcomes

Defined roles and responsibilities

Shared risk model

Low bandwidth requirement

Please visit hcltech.com or send an email to contactbserv@hcl.com to schedule a meeting with our subject matter expert.



www.hcltech.com

Hello there! I am an Ideapreneur. I believe that sustainable business outcomes are driven by relationships nurtured through values like trust, transparency and flexibility. I respect the contract, but believe in going beyond through collaboration, applied innovation and new generation partnership models that put your interest above everything else. Right now 120,000 Ideapreneurs are in a Relationship Beyond the Contract™ with 500 customers in 32 countries. **How can I help you?**

Relationship[™]
BEYOND THE CONTRACT

HCL

WX5747 BE-104234703875764-ENO0GL