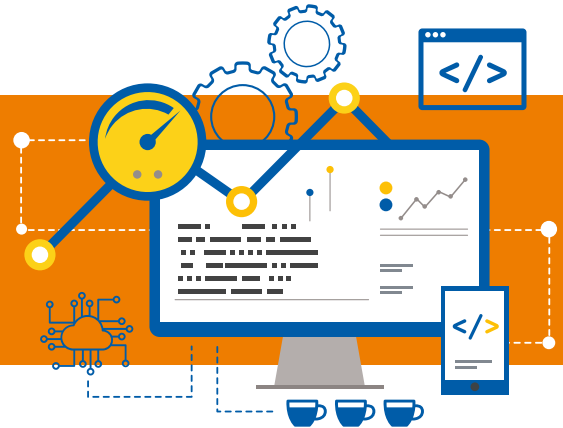


TRANSFORM EXPERIENCE.
TRANSFORM BUSINESS.

HCL's SAP S/4HANA
Conversion Cockpit



SOLUTION OVERVIEW



- The solution comes with a conversion cockpit for source and target systems, and provides a holistic dashboard view of Finance data conversion activities carried out in SAP ECC and SAP S/4HANA in REAL TIME.
- It includes automation of mandatory pre-checks steps that help SAP customers to complete their SAP S/4HANA Conversion activities faster and seamlessly. This tool is a single repository for all prerequisites checks, execution of reports, data snapshots, data integrity, configuration checks, enrichment status, business sign off, and reconciliation reports.

Pre-Conversion

- Compatibility checks
- Consistency Checks
- Preparation Activities
- Final Preparation

Conversion

- Migration Completion Checks
- Data Migration Checks
- Configuration Checks

Post -Conversion

- Document Enrichment Checks
- Manual activities check
- Data reconciliation

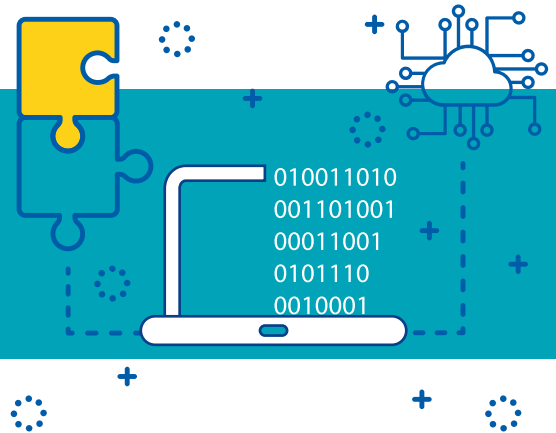
- The cockpit currently supports conversion of SAP ECC systems to latest SAP S/4HANA 1709 on-prem edition.
- HCL Innovation team will continue to upgrade the cockpit along with the new releases of SAP S/4HANA.

SOLUTION DETAILS



- It is an accelerator where all the pre & post conversion checks and reports are listed, logically sequenced as per conversion life cycle.
- The cockpit embeds exhaustive SAP recommended and HCL conversion best practices for system conversion.
- Logic is built within the tool to update the status automatically as a Complete/Incomplete step or Consistent/Inconsistent for each activity which will help the user to take corrective action there and then.
- SAP recommended notes are checked and applied through the tool.
- HCL Recommendation/help guides the solution to the errors occurred.
- Document uploading and downloading functionality are provided.
- All steps have an option of New Run & Last run on the input screen which will gives the user an option to display the last status of previous run as a whole or execute a fresh new run.
- Reconciles the legacy data in SAP S/4HANA :-
 - Automatic Reconciliation at table level and company code levels.
 - Provides facility to download reports in one go.
- The solution updates the conversion status on Real-time basis in the Dashboard in FIORI hosted in the cloud platform.

KEY SOLUTION ATTRIBUTES



Compatibility Checks

Compatibility check validates whether system can convert from SAP ECC to SAP S/4HANA versions e.g. 1709 or not. It performs checks like Industry Checks, Business Function Checks, Active modules and Add-on checks.

Consistency Checks

Checking of consistency in existing SAP ECC system data, so to avoid any potential data errors or showstoppers during SAP S/4HANA Data migrations. Examples of data consistency checks: FI-MM, GL-AA, FI Ledgers comparison etc.

Preparation Checks

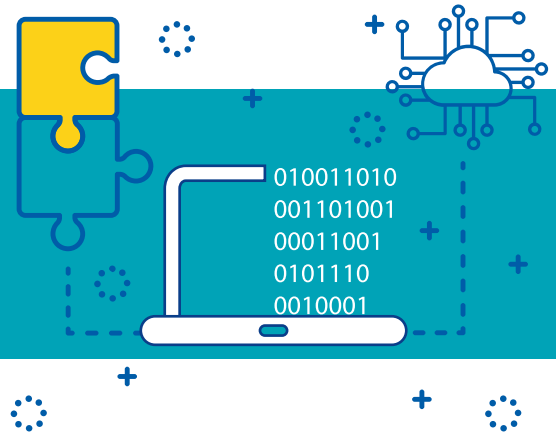
Preparation Activities include checking of mandatory preparations for SAP S/4HANA Data Migration - OSS Note Implementation Check, Period-End Closing Activities, Business Partner conversion, Currency Settings and CO Configuration, and Simplification Items Check

Final Preparation

Final Preparation Activities include :

- Locking all users in the system except Finance core,
- Snapshot of Background Jobs, IDOCS and Variants in the system,
- Data Snapshot for Validations and Automated Reconciliation

KEY SOLUTION ATTRIBUTES



Data Migration Checks

Checks completion status of Configurations and Data migration cockpit in the SAP S/4HANA system. Post-DMO activities are carried out by SAP Basis team.

Data Reconciliation

Compares business & technical data snapshots taken in SAP ECC (pre-conversion) with SAP S/4HANA (post-conversion). Also checks Jobs, variants migrated from SAP ECC system are up and running or not.

Migration Error Repository

The cockpit provides an exhaustive list of possible Data Migration errors in Finance space and it's remediation.

Tools & Utilities

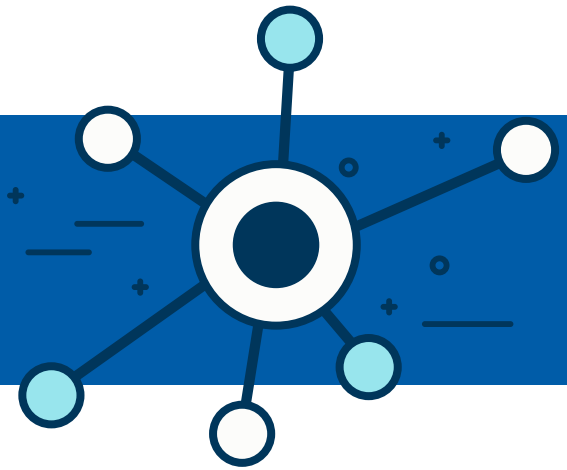
- SAP Note recommendation & automatic notes application.
- HCL recommendations .
- File upload and download report outputs.
- The user can enter comments against each step.

BENEFITS



- Organised and predictable SAP S/4HANA conversion approach.
- Industry experience tells us, project team spends a sizable amount of time in getting their source SAP ECC systems ready for conversion. This tool catches the sweet spot and reduces the human effort significantly in conversion pre-checks and preparation for downtime.
- Potential to save the Conversion cost and efforts up to 20%
- Real benefits through a smoother and lower-risk transition
- Provides for automated business data reconciliation (pre & post conversion)
- Recommends and applies mandatory SAP notes for conversion.
- Leaves detailed Audit trail for post conversion System Audit.
- Real-time reporting available for Program Management Office through conversion Dashboard built on SAP FIORI, which saves manual reporting efforts.

TECHNOLOGIES USED



**Cloud Platform
(Fiori dashboard)**

SDI

SAP ECC

SAP S/4HANA

Mail to us at sap@hcl.com



www.hcltech.com

Hello there! I am an Ideapreneur. I believe that sustainable business outcomes are driven by relationships nurtured through values like trust, transparency and flexibility. I respect the contract, but believe in going beyond through collaboration, applied innovation and new generation partnership models that put your interest above everything else. Right now 1,15,000 Ideapreneurs are in a Relationship Beyond the Contract™ with 500 customers in 32 countries. **How can I help you?**

Relationship[™]
BEYOND THE CONTRACT

HCL