

**TRANSFORM EXPERIENCE.
TRANSFORM BUSINESS.**

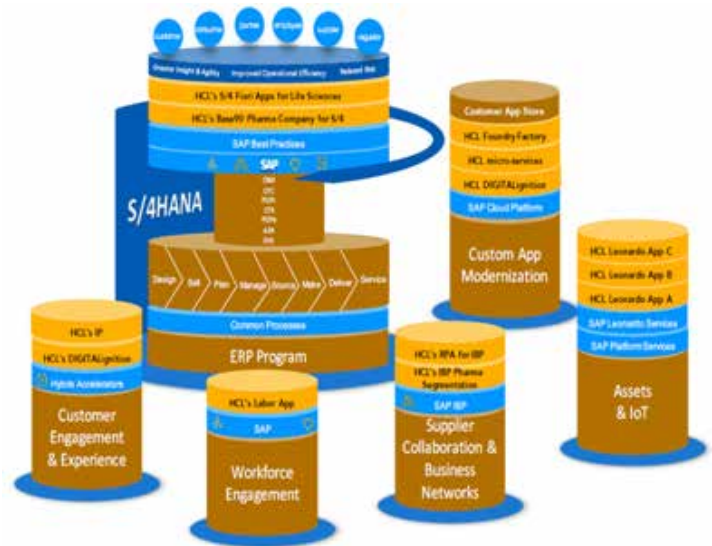
Base90 for Life Sciences



SOLUTION OVERVIEW

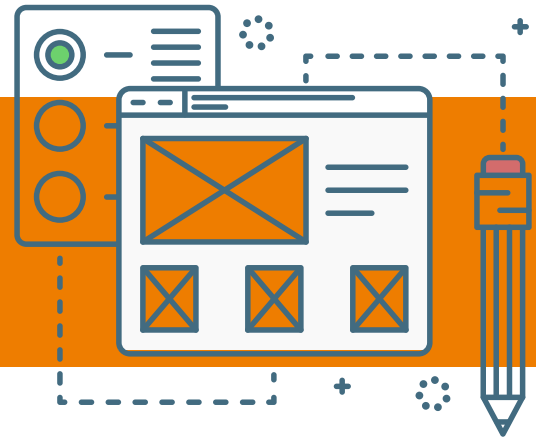


Base90 for Life Science is a part of the whole bouquet of solutions and add-ons that HCL offers for the LS industry. Base 90 for LS industry extends SAP's technology by adding SAP industry-specific preconfigured templates, configuration, and enhancements. HCL Base90 Pharma is built on top and integrates with SAP Best Practice for SAP S/4HANA. HCL's solution provides best practices for industry-specific business requirements and processes.



HCL uses SAP Best Practice processes along with relevant selections from HCL's Base90 preconfigured solution to construct the initial project environment and to accelerate the project Design and Validate Phase.

SOLUTION DETAILS



- Build according to standard SAP Best Practice template with required documentation over configurations, fact sheets, and test scripts.
- The best add-on practices are available in solution manager with a ready configurable format.
- Based on HCL's LS expertise and supply chain proficiency.
- Fills the gaps in standard Best Practice solution for pharma processes
- Helps digitalization of pharma sector business processes

Make-to-Order Production for Process Industry

Make-to-order manufacturing process is used to produce certain specialty chemicals which are filled and packed only after a sales order is received

Sample Processing

This scope item includes the pre-/co-shipment of sample materials.

Liquid Dosage Packaging - Subcontracting in Procurement

This scope item includes the pre-/co-shipment of sample materials.

Work In Process statures of Batch

WIP batch in production represents intermediate status of the product at different stages of production

Bulk Manufacturing with PI sheet

Bulk Manufacturing with PI sheet is to describe business process related to manufacturing bulk materials which includes process management and PI sheets.

Sales Order including Proof of Delivery and Certificate of Analysis (CoA)

This scope item describes sales and delivery of products to domestic customers including a CoA as well as receiving of a delivery confirmation

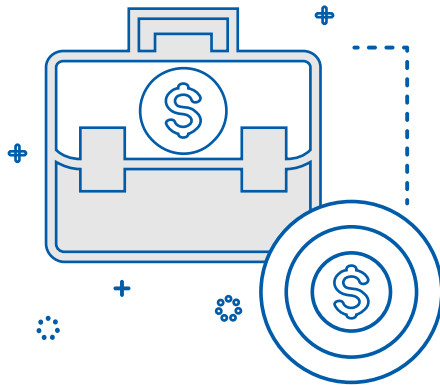
Liquid Dosage Packaging Subcontracting in Manufacturing processes

The Subcontracting process involves sending components to a vendor as part of production processes, and receiving value-added material back into the production process

Bulk Manufacturing with PI sheet

The stock transfer process begins with a requirement to transfer material from one plant to another within the same company code

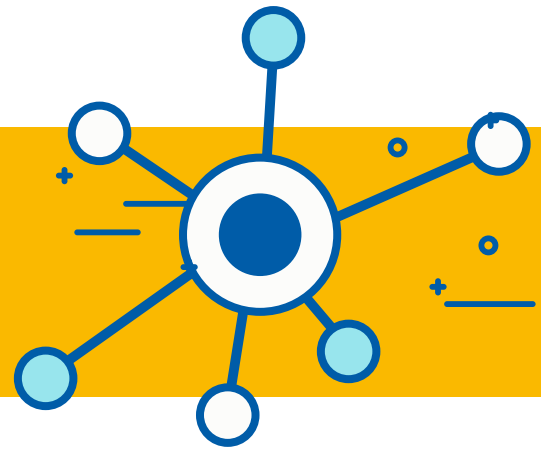
BENEFITS



Business value:

- Quick adoption of S/4 Hana solutions with cost-time benefits
- Unique best practice availability, specific to LS industry
- Covers processes of entire LS supply chain
- Ease of transportation and reconfiguration from client to client
- Included in HCL implementation service
- Faster return on investment
- Seamless backend Integration with solution manager
- Standardized processes
- Transparency and improved responsiveness
- Improved customer service

TECHNOLOGIES USED



DEPLOYMENT DETAILS

The solution has been deployed using standard base 90 best practices which includes:

Solution Manager release 7.2

S/4H 1709 solution

Configurable technology format (JSON)



Mail to us at sap@hcl.com



www.hcltech.com

Hello there! I am an Ideapreneur. I believe that sustainable business outcomes are driven by relationships nurtured through values like trust, transparency and flexibility. I respect the contract, but believe in going beyond through collaboration, applied innovation and new generation partnership models that put your interest above everything else. Right now 1,15,000 Ideapreneurs are in a Relationship Beyond the Contract™ with 500 customers in 32 countries. **How can I help you?**

Relationship[™]
BEYOND THE CONTRACT

HCL