

# Smart Social Enterprise Solution



## A Social Enterprise is necessitated by high school dropouts- 'The Silent Epidemic', as christened by the Bill & Melinda Gates Foundation

Every year, over **1.2 million students** drop out of high school in the United States alone. That's **a student every 26 seconds - or 7,000 a day**

**About 25%** of high school freshmen **fail to graduate** from high school on time



The U.S., which had some of the highest graduation rates of any developed country, **now ranks 22nd out of 27 developed countries** in this regard

**Almost 2,000 high schools** across the U.S. **graduate less than 60%** of their students.

## What is HCL's Social Enterprise solution

**HCL's Social Enterprise solution** is envisioned to build an online platform for schools and states which can provide:

- Indication of a potential **high school dropout/failure case** based on **current and historical data** of students' **cognitive skills, customizable list of noncognitive skills, and socio-economic background**
- **Recommendation of an apt solution** for identified students by creating a **crowdsourced platform** for different participating entities
- **Tracking of student progress** across academic, economic, and other parameters. The platform further recommends remedial steps for 'at-risk' students.

# The Path to a **Social Enterprise**

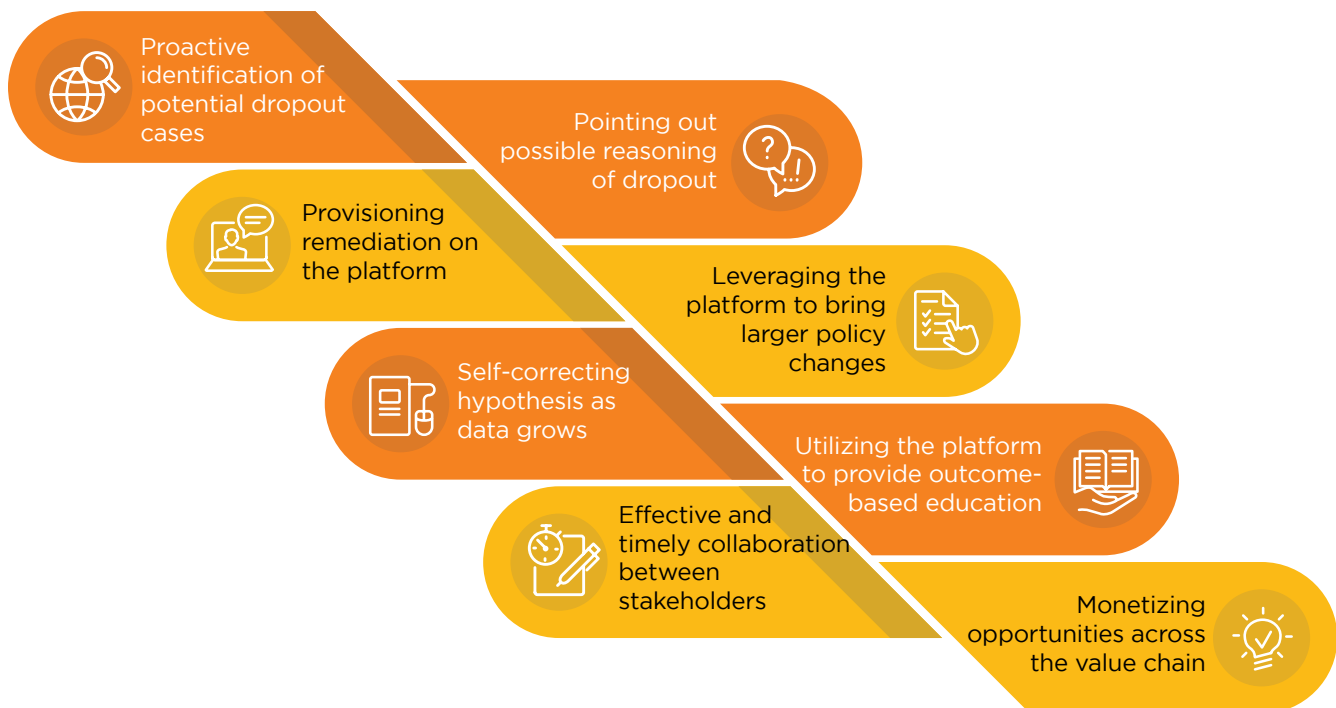
HCL's understanding of dropout impact parameters

**Numerous reports established the following:**

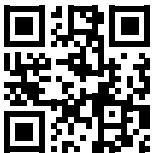
- **Cognitive skills** have a direct impact on dropouts
- However, **non-cognitive skills** couldn't be ignored as it leads to the decision of dropping out
- **Socio-economic factors** make students behave in a particular way

## Benefits of

HCL's Social Enterprise solution



Contact us: [CS\\_Marketing@hcl.com](mailto:CS_Marketing@hcl.com)



[www.hcltech.com](http://www.hcltech.com)

**Hello there! I am an Ideapreneur.** I believe that sustainable business outcomes are driven by relationships nurtured through values like trust, transparency and flexibility. I respect the contract, but believe in going beyond through collaboration, applied innovation and new generation partnership models that put your interest above everything else. Right now 150,000 Ideapreneurs are in a Relationship Beyond the Contract™ with 500 customers in 46 countries. **How can I help you?**

**HCL**