

# Reinventing the core, reframing the future

PeopleSoft Move and Improve



HCL has been responding to customer needs for their digital transformation. Having realized gainful insights, with its vast industry experience, HCL's Oracle practice is well positioned to help customers in their Move and Improve journey.

We have helped our customers globally, build digital enterprises, on the cardinal foundations of efficiency, experience, and ensuring a speedy and specialized cloud migration experience.

## Industry Challenges

- ◆ Incurring of high costs for implementation and maintenance and multiple environments by in-house data centers
- ◆ Huge manual effort and high costs for maintaining on-premises PeopleSoft
- ◆ Environment refresh and tools upgrade are time-consuming
- ◆ Performance issues during critical processing times due to infra limitations

## How can HCL help?

HCL helps you decide if you are ready to move to Oracle Cloud Infrastructure and quantify the benefits you can expect. Our expert guidance, time-saving methodologies, and tools, and a global team of business and technology experts—who are ready to help you perform and transform with Oracle solutions—will take you safely there.

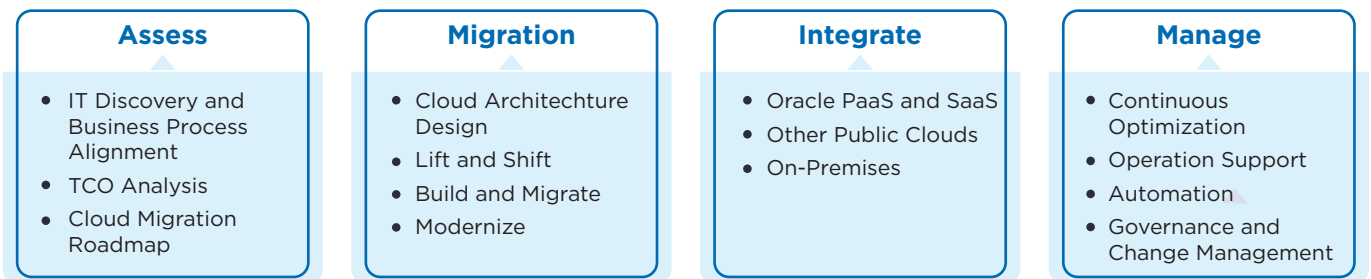
HCL can help you to move from on-premises infrastructure to Oracle Cloud Infrastructure.

## Why HCL?

Organizations world over choose HCL as their preferred partner for PeopleSoft Move and Improve because of our



## Our Offering Snapshot



## On-premises PeopleSoft to Oracle Cloud Infrastructure (OCI) move—Advantages, delivered through HCL

- Option of Oracle Database managed by Oracle including backup, recovery and refreshes.
- Utilize Lift and Shift utility available from Oracle to migrate your load to the OCI.
- Future maintenance becomes easier as you can subscribe to the Updates in Cloud Manager.
- Oracle Application's latest release is first available on OCI and then on premises
- Oracle is now releasing the latest versions first on OCI with a cloud-first strategy
- Customer can take advantage of the Oracle Cloud Manager
- Customer can install the latest images from the Oracle Cloud Marketplace in less than 10 minutes
- Option of Exadata machine in the cloud or on premises

# Get Immensely Benefited by HCL's PeopleSoft Innovation Lab



Leveraging In-depth knowledge and experienced PS consultants



Enhanced value delivery to customers



Accelerated solution delivery

## Reusable Templates and Best Practices

Derived from proven HCL methodology

Ensure faster, cost-effective, and risk-free Move and Improve experience

**Challenges Faced in Lift & Shift and DPK**

**DPK Issues**

- Failed issue while creating PSM using DPK when tried to change default http ports.
  - Resolution:** - Problem was with installation on psft, customer's file to reference you need to check for installation, you can see it from psft\_deployment guidefile.
- Failed issue while cloning an deployed environment using DPK using "psft-apt-setup-01-000000" command.
  - Resolution:** - The Windows cleanup by following below steps:
    - Open the file `psft_apt-01-000000\psft-apt-01-000000\psft-apt-01-000000.ps1` in a text editor, such as vi.

**DPK Issues (continued)**

- Change the value of the source directory from present to absent.
  - Open a new console and log in as root.
  - Change directory to the `psft_apt-01-000000\psft-apt-01-000000\bin` directory.
  - Run the following command: `./psft-apt-01-000000\psft-apt-01-000000.ps1 -source_dir /` The options require **double dashes**. On Linux: `./psft-apt-01-000000\psft-apt-01-000000.ps1 -source_dir /`
  - Run: `./psft-apt-01-000000\psft-apt-01-000000.ps1 -source_dir /`
- Make sure there isn't host up when we change PSM http port to 80.
  - PeopleSoft deployment using DPK fails due to the hosts above during below error:

**PeopleSoft Lift & Shift**

Lift and Shift is the feature of PeopleSoft Cloud Manager that allows you to package and migrate your on-premise PeopleSoft environment to Oracle Cloud.

"Lift" utility is provided in Cloud Manager and is used to package PeopleSoft application environment data such as PL\_APP\_HOME, PL\_CUST\_HOME and PeopleSoft Oracle database to DPK (Deployment Kit) files. This DPK package is then uploaded to Oracle Storage Cloud.

"Shift" refers to downloading the custom DPK files uploaded via lift and creating a new environment on Oracle Cloud. You can then migrate these environments on Oracle cloud.

**Procedure**

Parameters	Production	DR	QA	DEV
Platform	Linux	Linux	Linux	Linux
Version				
Web				
App				
CPU				
Database Storage				
No of DBs				
Database OS Platform	Linux	Linux	Linux	Linux
Database type	Oracle	Oracle	Oracle	Oracle
Database version				
App (only for Oracle)				
OS (only for Oracle)				
Database file				
PeopleSoft version				
Application version				
No of Application servers				
No of Web servers				
No of Batch servers				
No of Database servers				
Database license license				
CPUs to use				
No of cores				

**Challenges, Issues and Best Practices**

**Process documents**

**Sizing Templates**

**Size**

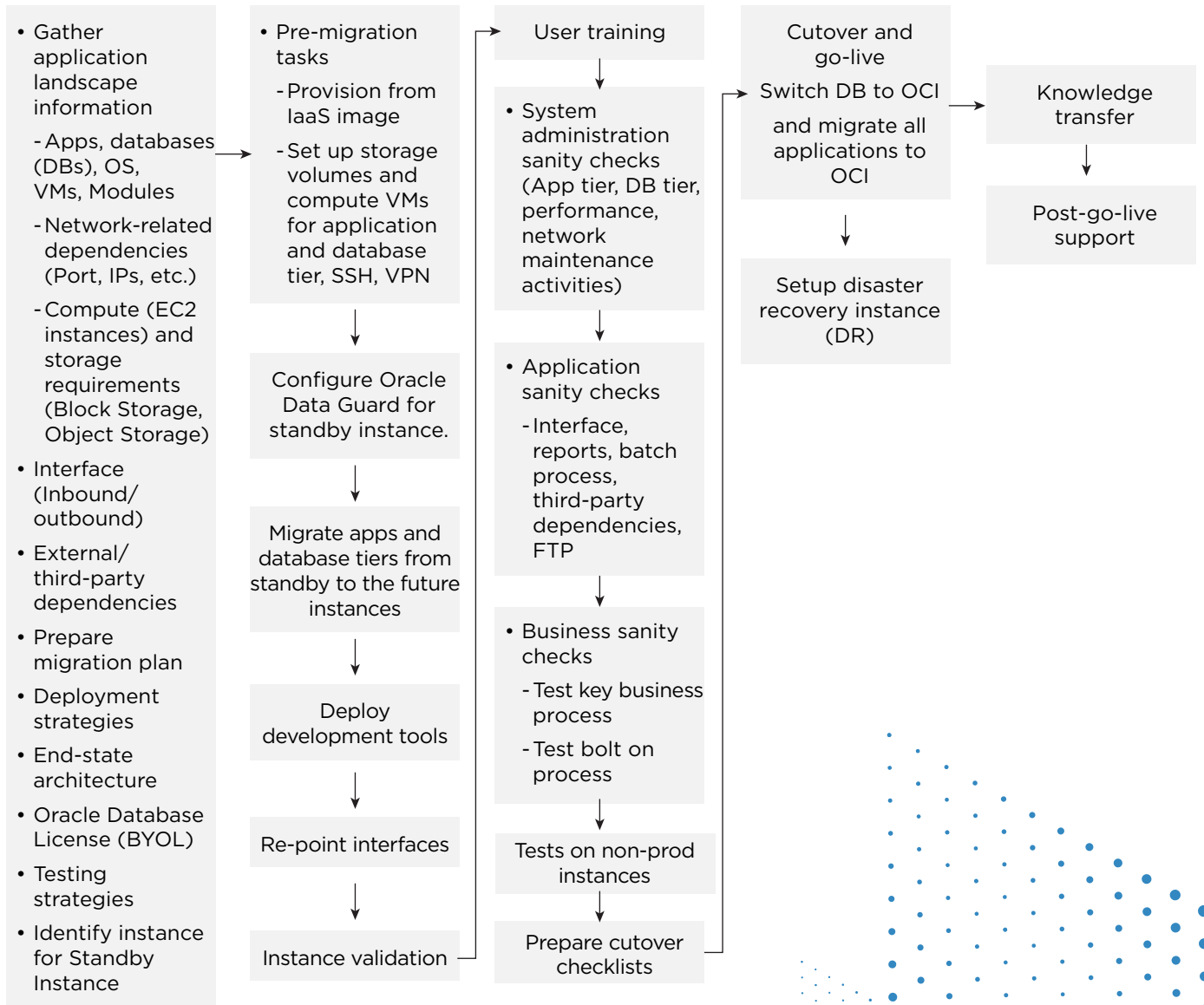
**Questionnaire**



# Our Framework

Developed over the last five years

Strikes the right balance between structure and flexibility



# Success Stories

## Client

A European multinational financial services company having its core businesses in insurance and asset management

## Business Challenge/Problem

- Current PeopleSoft CRM not supporting PCI due to TLS non-compliance
- On-premises system with six servers, a 12 TB database, and multiple connected systems like USPG, Ecom, AGA Services, and ITP.
- Heavily customized CRM 8.8/8.49 system not updated with patches and system performance issues
- Payment integration delays due to errors caused due to 8.8 limitations
- Oracle support not available
- Limited reporting capability due to older version
- Manual regression testing causing delays and errors



## Business Impact Delivered by HCL

- Improved system performance and cost savings with AWS
- PCI compatibility with TLS 1.2
- Enhanced reporting and search capability
- Latest integration technologies available to connect with third parties
- New 9.2 features available like dashboards, pivot grids, page-filled configurator, etc.
- Support from Oracle till 2030
- Mobile capabilities for accessing PeopleSoft



For more information, reach us at [oracle@hcl.com](mailto:oracle@hcl.com)



HCL Technologies (HCL) empowers global enterprises with technology for the next decade today. HCL's Mode 1-2-3 strategy, through its deep-domain industry expertise, customer-centricity and entrepreneurial culture of ideapreneurship™ enables businesses to transform into next-gen enterprises.

HCL offers its services and products through three lines of business - IT and Business Services (ITBS), Engineering and R&D Services (ERS), and Products & Platforms (P&P). ITBS enables global enterprises to transform their businesses through offerings in areas of Applications, Infrastructure, Digital Process Operations, and next generation digital transformation solutions. ERS offers engineering services and solutions in all aspects of product development and platform engineering while under P&P. HCL provides modernized software products to global clients for their technology and industry specific requirements. Through its cutting-edge co-innovation labs, global delivery capabilities, and broad global network, HCL delivers holistic services in various industry verticals, categorized under Financial Services, Manufacturing, Technology & Services, Telecom & Media, Retail & CPG, Life Sciences, and Healthcare and Public Services.

As a leading global technology company, HCL takes pride in its diversity, social responsibility, sustainability, and education initiatives. As of 12 months ending on March 31, 2021, HCL has a consolidated revenue of US\$ 10.17 billion and its 168,000+ ideapreneurs operate out of 50 countries. For more information, visit [www.hcltech.com](http://www.hcltech.com)



[www.hcltech.com](http://www.hcltech.com)