

# You need **HCL EDGE** for flawless, scalable apps, and digital products

Create exceptional user experiences to drive user adoption and engagement in your software systems. User experience design is an integral part of product engineering that defines the success of your business. Enterprises that adopt and apply experience design will almost double their revenue, half their time to market, get three times the return on investment, and improve efficiency by 75%.

With HCL EDGE (Experience Design and Engineering) you can unleash the power of your apps and digital products with our services and offerings in Design Thinking, Experience Design Evaluation, Experience Design Engineering, and New media Experiences.



# Get HCL EDGE - Experience Design and Engineering

## ABOUT HCL EDGE

HCL'S EDGE is an end-to-end Experience Design and Engineering practice that helps you solve key high-level design challenges in software design and engineering.

### User-centric methodology

Our design consultants will help turn your idea into a successful product that you can take to the market quickly.

### The right problem

We help you to build the right systems that align your business goals with end-customer experiences. We do this by first helping you define and articulate the problems accurately.

### Design + Engineering

Using design thinking processes and techniques, our UX engineers combine design aesthetics with technical know-how to help you engineering world-class products, services, and platforms.

## SERVICE OFFERINGS



### Design Thinking-led Envisioning

Solutions for product and business using design thinking processes and techniques.



### Usability Evaluation

With a focus on the end-user, we evaluate and propose improvements to software products and services.



### New Experience Design

Using virtual and augmented reality, and voice user interfaces, our ux engineering solutions create new, engaging, and immersive user experiences.



### UX Engineering Solutioning

Engineering solutions that bring delightful user experiences to life.



### UX Engineering Audit

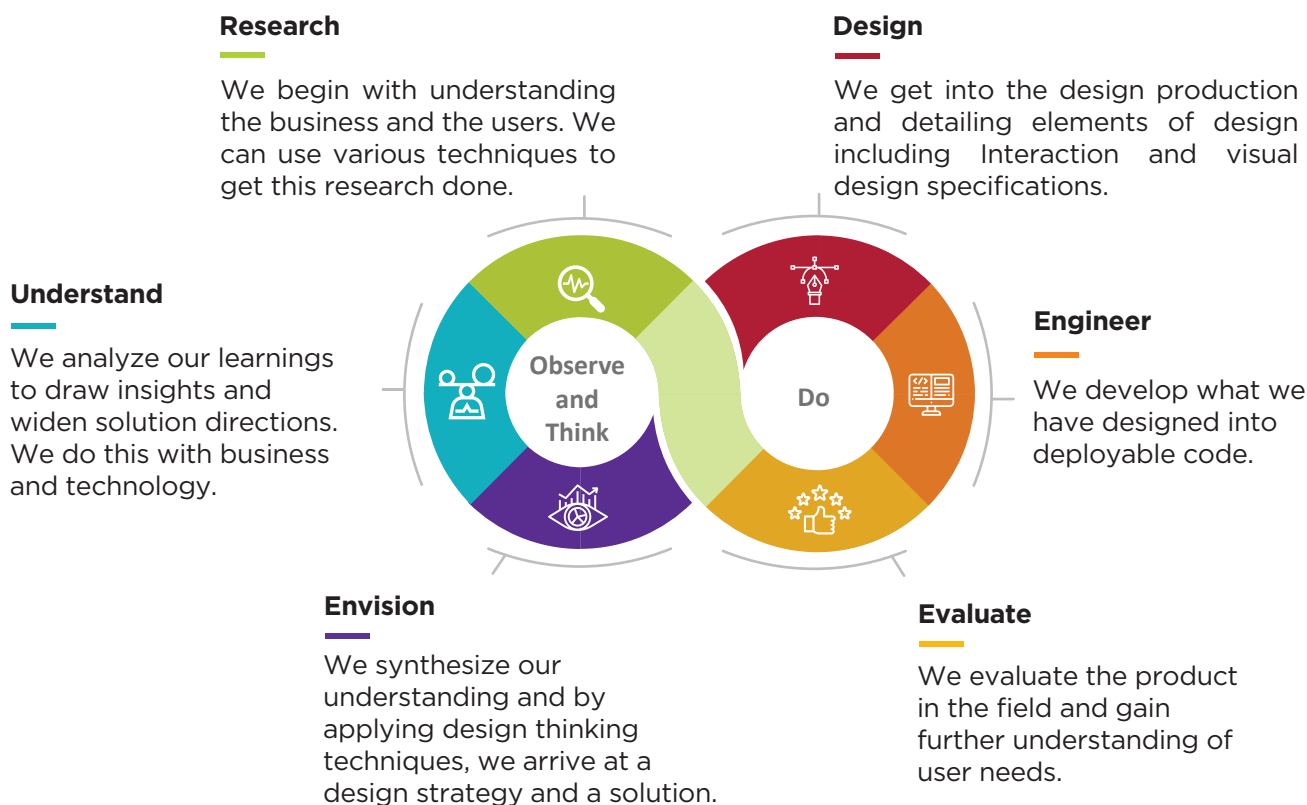
With a focus on the technology stack, we evaluate and propose improvements to software products and services.



### UX Engineering Modernization

We help you transform your legacy systems to newer technologies and implementation frameworks.

# What makes HCL EDGE special

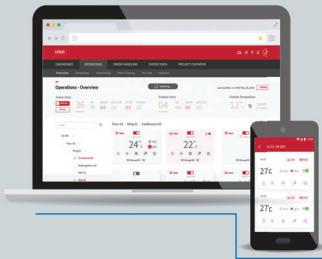


## Tools and Technologies

|  |  |   |
|--|--|---|
| <b>Wireframing</b><br>Adobe XD, Figma, Sketch, Axure   | <b>Package Management</b><br>NPM, Bower                    |   |
| <b>Dependency Management</b><br>Browserify, RequireJS  | <b>Visual Design</b><br>Adobe Photoshop, Adobe Illustrator |   |
| <b>Build</b><br>Gulp, Grunt                            | <b>TDD/BDD</b><br>Jasmine, Chai, Mocha                     | <b>Skeleton Framework</b><br>ExpressJS  |
| <b>Version Control</b><br>Git, Apache Subversion (SVN) | <b>JS Backend</b><br>NodeJS                                | <b>UI Technologies</b><br>HTML5, CSS3, Bootstrap, SAAS, Angular, jQuery, Ajax, JS, Backbone, Ionic, React |



# Our Case Studies



HCL's EDGE powered the IoT solution for Hitachi-Johnson Controls' award winning airCloud Pro that enables end-users to optimize scheduling and enhance the overall energy efficiency of airCloud Pro installations across platforms.



We combined HCL EDGE with the IoT-based data visualization to design a solution for the formula car racing scenario. Our Pitstop management solution helps effectively monitor the performance metrics of the racecar in real-time during F-1 races.

## Why HCL EDGE ?

HCL's EDGE helps you build flawless, scalable apps and digital products that you can take to market quickly. We help you accomplish this with our team of technology experts, end-to-end capabilities, tools, processes, and rich experience in enterprise applications design & engineering.

### People

HCL's EDGE team has a wide variety of competencies to conceptualize and execute state-of-the-art software experiences. We have a multi-faceted team of design professionals, ranging from ethnographic researchers to game designers, who form a part of our large team of skilled engineers specializing in front-end engineering technologies.



### Processes, Tools, and Techniques

HCL has successfully delivered over 500 design and engineering projects. We have developed a wealth of internal standards, tools, and techniques including a reusability platform that improves productivity and ensures consistency of quality.

- Sales Support/ Consulting Presence
- Design and Development Presence

### Experience

HCL has rich experience of working on a wide range of products and platforms across industries such as medical, aerospace and defense, automobile, fintech, telecommunications, hi-tech, media, and industrial manufacturing.

Get an EDGE over your competition. Contact us to know how we can help you transform your business by creating great user experiences.

**HCL**



[www.hcltech.com](http://www.hcltech.com)

HCL Technologies (HCL) empowers global enterprises with technology for the next decade today. HCL's Mode 1-2-3 strategy, through its deep-domain industry expertise, customer-centricity and entrepreneurial culture of ideapreneurship™ enables businesses to transform into next-gen enterprises.

HCL offers its services and products through three lines of business - IT and Business Services (ITBS), Engineering and R&D Services (ERS), and Products & Platforms (P&P). ITBS enables global enterprises to transform their businesses through offerings in areas of Applications, Infrastructure, Digital Process Operations, and next generation digital transformation solutions. ERS offers engineering services and solution in all aspects of product development and platform engineering while under P&P HCL provides modernized software products to global clients for their technology and industry specific requirements. Through its cutting-edge co-innovation labs, global delivery capabilities, and broad global network, HCL delivers holistic services in various industry verticals, categorized under Financial Services, Manufacturing, Technology & Services, Telecom & Media, Retail & CPG, Life Sciences, and Healthcare and Public Services.

As a leading global technology company, HCL takes pride in its diversity, social responsibility, sustainability, and education initiatives. As of March 31, 2021, HCL Enterprise generates annual revenues of US\$ 10.1 billion and has 169,000 employees operating out of 50 countries.

For more details contact: [ers.info@hcl.com](mailto:ers.info@hcl.com)

Follow us on twitter: <http://twitter.com/hclers> and our blog <http://ers.hclblogs.com/>

Visit our website: <http://www.hcltech.com/engineering-services/>