

HCL

IoT WoRKs™

Enhance asset lifecycle management
for the next-gen enterprise



www.hcltech.com

01

Introduction

As businesses evolve and their assets become more connected, the enterprise asset management processes must also evolve. Two-thirds of the companies in the asset-intensive sectors, such as manufacturing, industrial machinery, financial services, transportation and logistics, oil and gas, and technology, are leveraging or planning to deploy IoT-enabled asset management solutions.

The Intelligent Asset Tracking and Management (IATM) solution, by IoT WoRKS™, aims to enhance asset on-boarding, transform inventory auditing processes, and improve asset visibility through location monitoring.

An industry agnostic solution, IATM has various application areas such as IT assets, life sciences and healthcare, financial services, automotive, and MRO (Maintenance, Repair, and Overhaul) services, being the immediately realized implementations.

The inevitable need to have a 360-degree view of the enterprise assets is driving today's \$5.1 billion Enterprise Asset Management (EAM) market. Growing at a CAGR of 16.7%, the data-driven outcomes enabled by IoT are only accelerating the EAM market towards the estimated \$8.2 billion by 2024.

02

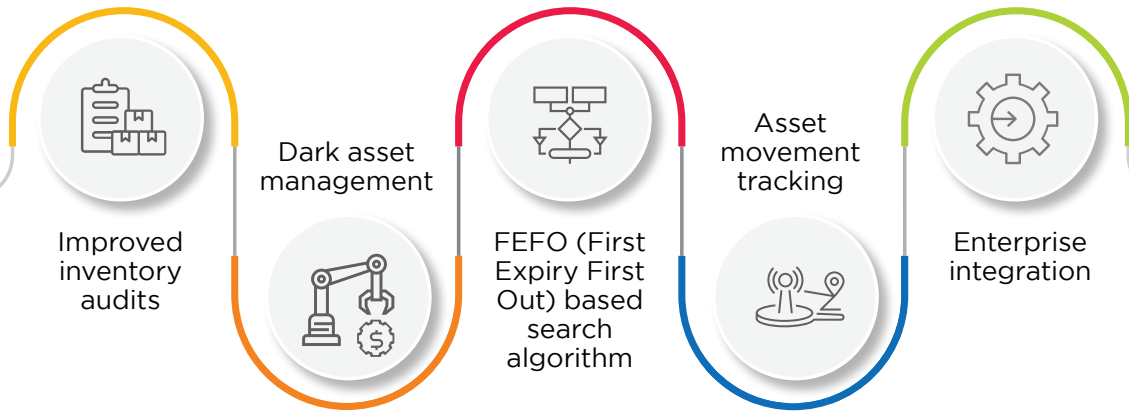
Our solutions

A. Intelligent Asset Tracking and Management (IATM) solution

IATM is an integrated track and trace solution that harnesses the power of the IoT ecosystem for managing assets throughout the asset life cycle. This improves operational efficiency and productivity of asset management operations across verticals and eliminates potential losses incurred due to lack of inventory visibility and traceability of assets.

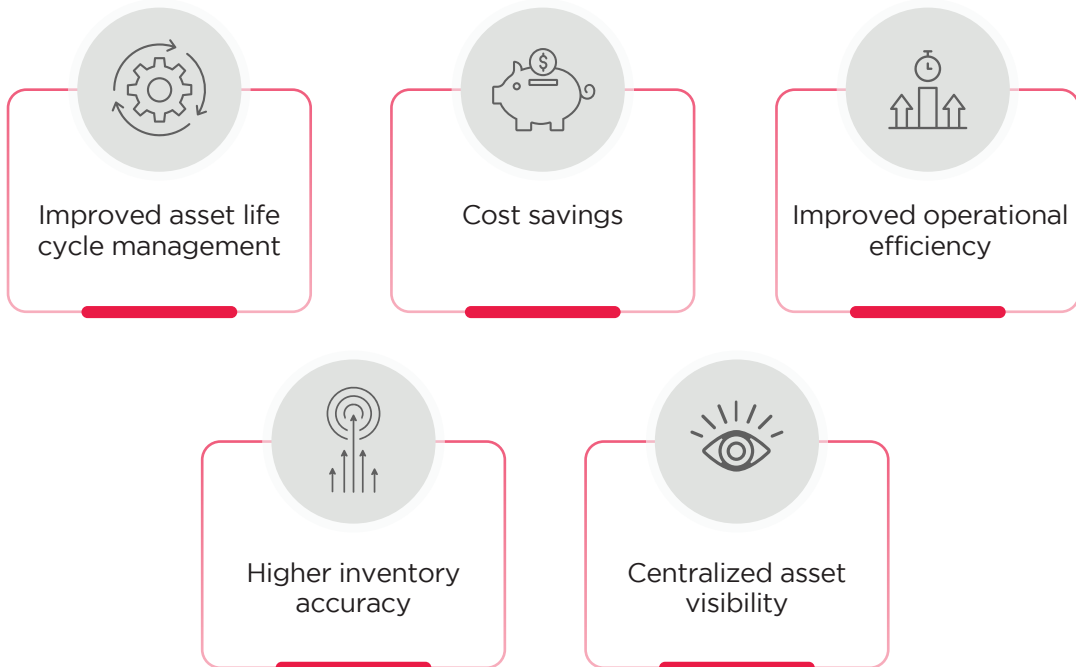
Features

IoT-led asset tracking - An end-to-end asset management solution comprising hardware, software, and OOTB integration services delivered as an IoT WoRKS™ connected assets and connected operations offering.



Benefits

Customers can realize significant benefits by leveraging HCL's 1PLMCloud solution as outlined below:



03

Our success stories



IATM deployed for a global dairy cooperative to automate their existing IT asset management processes



IATM for O&G major - Cloud-based solution "IATM" uses RFID technology to detect and record the simultaneous movement of assets across CUP, DCs, and solution centers

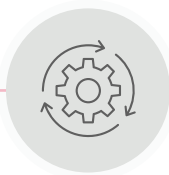
B. DECoDe solution—Dynamic Ecosystem of Connected Devices

With the new set of asset categories coming in, tools that were traditionally used for IT assets management cannot be extended to all functions of a new array of devices. The new requirements in managing and maintaining the assets create a piecemeal adoption of processes in the enterprises. This poses challenges in applying the standard enterprise workflow and policies across networks, locations, and roles.

Dynamic Ecosystem of Connected Devices (DECoDe) by IoT WoRKS™ is a device management solution to manage, monitor, configure and troubleshoot IoT devices remotely from a consolidated dashboard.

Features

DECoDe offers a seamless and integrated view of the IoT ecosystem of the enterprise from a single pane of glass. The DECoDe platform dynamically aggregates PaaS, OEM platforms and protocols to bridge data silos and create a unique enterprise device ecosystem.



Device lifecycle and asset management



Device services



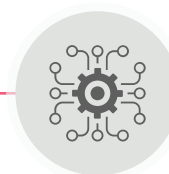
Monitoring



Consolidated dashboard



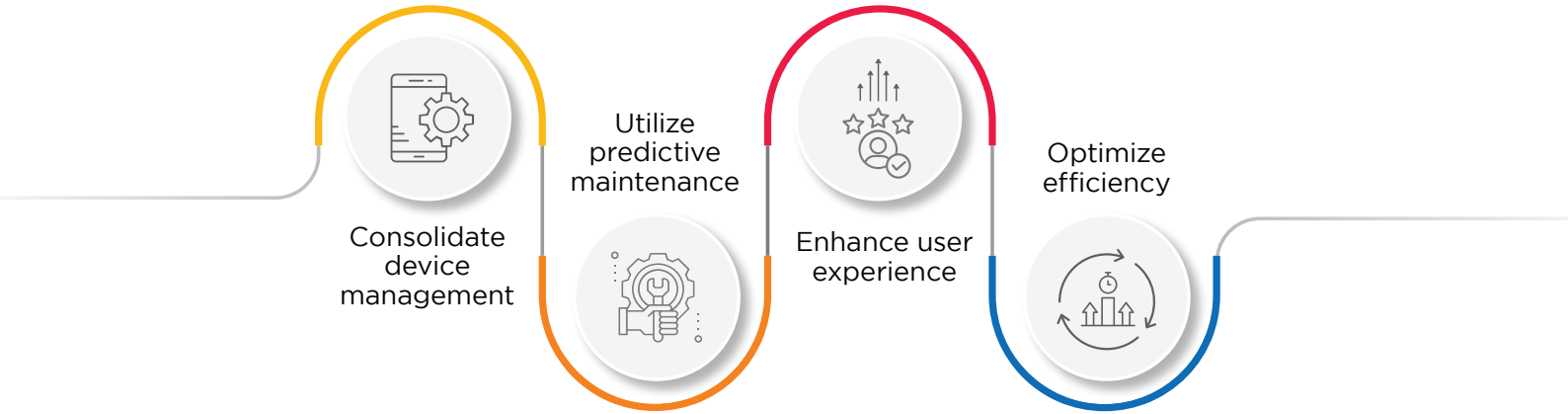
Role-based access and security



Unified workflow and integration

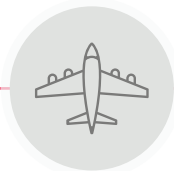
Benefits

With DECoDe's quick on-boarding leveraging device templating capabilities, the solution can be deployed in a multi-vendor and heterogeneous device environment to introduce a standardized and unified workflow to manage the IoT ecosystem comprising thousands of diverse connected devices.



03

Our success stories



Global Aerospace Major -
DECoDe platform enabled end-to-end IoT device management services of 26,500 special devices.



DSS - MAJOR LATIN AMERICAN CITY - deployment and management of 150k cameras to enhance outdoor public safety-Implemented DECoDe platform for remote camera, audio sensor monitoring, and VMS solutions for video streaming.



HCL Technologies (HCL) empowers global enterprises with technology for the next decade today. HCL's Mode 1-2-3 strategy, through its deep-domain industry expertise, customer-centricity and entrepreneurial culture of ideapreneurship™ enables businesses to transform into next-gen enterprises.

HCL offers its services and products through three lines of business - IT and Business Services (ITBS), Engineering and R&D Services (ERS), and Products & Platforms (P&P). ITBS enables global enterprises to transform their businesses through offerings in areas of Applications, Infrastructure, Digital Process Operations, and next generation digital transformation solutions. ERS offers engineering services and solutions in all aspects of product development and platform engineering while under P&P. HCL provides modernized software products to global clients for their technology and industry specific requirements. Through its cutting-edge co-innovation labs, global delivery capabilities, and broad global network, HCL delivers holistic services in various industry verticals, categorized under Financial Services, Manufacturing, Technology & Services, Telecom & Media, Retail & CPG, Life Sciences, and Healthcare and Public Services.

As a leading global technology company, HCL takes pride in its diversity, social responsibility, sustainability, and education initiatives. As of 12 months ending on September 30, 2021, HCL has a consolidated revenue of US\$ 10.82 billion and its 187,634 ideapreneurs operate out of 50 countries. For more information, visit www.hcltech.com



www.hcltech.com